

Linkind LC09003256

Linkind Matter Smart Plug User Manual

Model: LC09003256

PRODUCT OVERVIEW

The Linkind Matter Smart Plug is designed to bring smart home automation to your devices, allowing for remote control, voice commands, and scheduled operations. It supports multiple smart home ecosystems through Matter, providing seamless integration and control.



Image: The Linkind Matter Smart Plug, a compact white device with a standard US electrical outlet on the front and a small LED indicator. It features branding for Linkind, Matter, Apple Home, Alexa, Google Home, and SmartThings compatibility.

KEY FEATURES

- **Matter Compatibility:** Easy setup and control across certified smart home platforms like Apple Home, Alexa, Google Home, and SmartThings.
- **Offline-Ready Control:** Devices communicate directly on your LAN, allowing control even without an internet connection.
- **Remote Control:** Manage electronics from anywhere using the associated app.
- **Voice Control:** Hands-free operation via Apple HomeKit, Siri, Amazon Alexa, Google Assistant, and SmartThings.
- **Flexible Scheduling & Timer:** Automate device power on/off to save energy.
- **Safety Features:** FCC certified, fire-resistant materials, 1800W 15A max capacity, short-circuit and overload protection.
- **Compact Design:** Small form factor that does not obstruct adjacent outlets.

APP Remote Control

Control your power remotely
and save money from anywhere

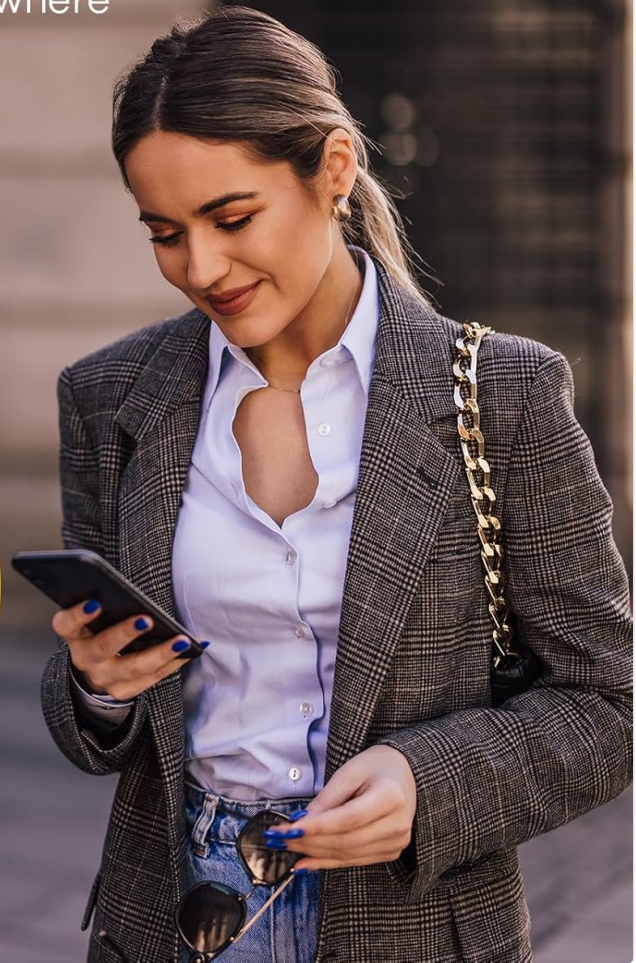


Image: An infographic highlighting the key features of the Linkind Smart Plug, including Matter-enabled, Simplicity, Interoperability, Reliability, Security, App Control, Timer & Schedule, Voice Control, Remote Control (Sold Separately), and Group Control. A smart plug is shown plugged into a wall outlet.

SETUP GUIDE

Before You Begin

- Ensure your Wi-Fi network is **2.4GHz** and supports **IPv6**. 5GHz Wi-Fi is not supported.
- A Matter-certified hub or controller (e.g., HomePod, Echo Dot, Nest, SmartThings Hub) is required for control via Apple Home, Alexa, Google Home, or SmartThings platforms.
- Alternatively, the AiDot app can be used without a separate hub.
- Update both your smart home apps and hubs to their latest versions for enhanced compatibility.

Initial Setup Steps

1. **Launch App:** Open your preferred smart home app (Apple Home, Alexa, Google Home, SmartThings, or AiDot).
2. **Enable Bluetooth and 2.4GHz Wi-Fi:** Ensure Bluetooth is enabled on your mobile device and you are connected to a 2.4GHz Wi-Fi network.
3. **Pair with Smart Speaker/Hub (if applicable):** Follow the app's instructions to pair the smart plug

with your Matter-compatible smart speaker or hub.

4. **Power On:** Plug the Linkind Matter Smart Plug into a wall outlet.
5. **Scan Matter Code:** Use your app to scan the Matter QR code located on the product or its packaging. Alternatively, you may hold your iPhone near the accessory if it supports NFC pairing.
6. **Success:** Once the device is recognized and added, you can begin controlling it.



Image: A six-step visual guide demonstrating how to connect the Linkind Smart Plug, including launching the app, enabling Bluetooth and Wi-Fi, pairing with a smart speaker, powering on the plug, scanning the Matter code, and successful connection.

Do I need a hub to set up Matter?

1

Matter compatible hub required



1. Must be IPv6 network connection
2. Not support Thread

2

No hub required



→ Linkind's Official App

1. No extra or hidden costs
2. Ensure avoidance of pirated apps



*Stable 2.4 GHz WiFi network, not support 5 GHz.

*Please update both the apps and hubs to the latest versions for enhanced compatibility. Please refer to the image Version Update.

*Please refer to our User Guide PDF, Troubleshooting PDF, and video available on the detailed product page. These tips will help you successfully connect.

Image: An illustration explaining Matter hub requirements. It shows that a Matter-compatible hub (like Alexa, Google Home, Apple Home, SmartThings devices) is required for those platforms, while the AiDot app can be used without a hub. Important notes about 2.4GHz Wi-Fi and IPv6 are included.

OPERATING INSTRUCTIONS

Remote Control

Once set up, you can control the smart plug from anywhere using your chosen smart home app. This allows you to turn connected devices on or off remotely, helping to manage power usage and save energy.

Timer and Schedule

Effortlessly reduce energy usage with automatic device shutdown after a set time



Image: A woman using a smartphone to remotely control a lamp plugged into a Linkind Smart Plug, illustrating the app remote control feature.

Voice Control

The Linkind Matter Smart Plug integrates with major voice assistants. Use simple voice commands to control your connected devices.

- For Apple HomeKit/Siri: Say, "Hey Siri, turn off the TV."
- For Amazon Alexa: Say, "Alexa, turn on the lamp."
- For Google Assistant: Say, "Hey Google, turn on the humidifier."

Voice Control



Image: A visual representation of voice control, showing speech bubbles with commands like "Hey Siri, turn off the TV" and "Hey Google, turn on the humidifier" next to a smart plug and connected devices.

Scheduling and Timer Functions

Automate your devices by setting schedules and timers through the app. This feature is ideal for energy saving and convenience.

- Set devices to turn on/off at specific times (e.g., TV off at 9 PM, Lamp on at 6 PM).
- Use the timer function to automatically shut down devices after a set duration.

Effortlessly Connect all <1800W Appliances with Ease



Christmas Tree



TV



Lamp



Fan

● ● ●
More



Blenders



Humidifier

Note: not support light dimming

Image: A smartphone screen displaying an "Add Schedule" interface, with examples of scheduled actions for a TV (off at 9 PM), lamp (on at 6 PM), and humidifier (off at 7 AM), demonstrating the timer and scheduling capabilities.

MAINTENANCE AND CARE

- Keep the smart plug clean by wiping it with a dry, soft cloth. Do not use liquid cleaners.
- Ensure the plug is used within its specified voltage (120 Volts) and maximum load (15A/1800W) to prevent damage.
- Avoid exposing the device to excessive moisture or extreme temperatures.
- Do not attempt to disassemble or repair the smart plug yourself. Contact customer support for assistance.

TROUBLESHOOTING

Problem	Possible Cause	Solution
Device not connecting to Wi-Fi.	Incorrect Wi-Fi band (5GHz), weak signal, incorrect password.	Ensure you are connected to a 2.4GHz Wi-Fi network. Move the plug closer to the router. Double-check Wi-Fi password.

Problem	Possible Cause	Solution
Voice control not working.	Incorrect voice command, hub not connected, app/hub outdated.	Use precise commands. Verify your Matter-compatible hub is properly connected. Update smart home apps and hub firmware.
Remote control not responding.	Internet connection issue, device offline.	Check your home internet connection. Ensure the smart plug is powered on and within Wi-Fi range.
Plug is hot to the touch.	Overloaded circuit, faulty device.	Unplug the device immediately. Ensure the connected appliance does not exceed 15A/1800W. Contact customer support if the issue persists.

For further assistance, please refer to the official Linkind support resources or contact customer service.

SPECIFICATIONS

- **Model Number:** LC09003256
- **Input Voltage:** 120 Volts
- **Max Output:** 15A / 1800W
- **Connectivity:** 2.4GHz Wi-Fi (IEEE 802.11 b/g/n), Matter
- **Material:** Copper (internal components), Fire-resistant materials (housing)
- **Color:** White
- **Dimensions:** Approximately 3.27 x 2.52 x 1.93 inches
- **Certifications:** FCC certified

Design with Safety and Compact



Input
15A 120V



Max Output
1800W



Fire-resistant
750°C



Short-circuit
Protection



Overloaded
Protection

FC

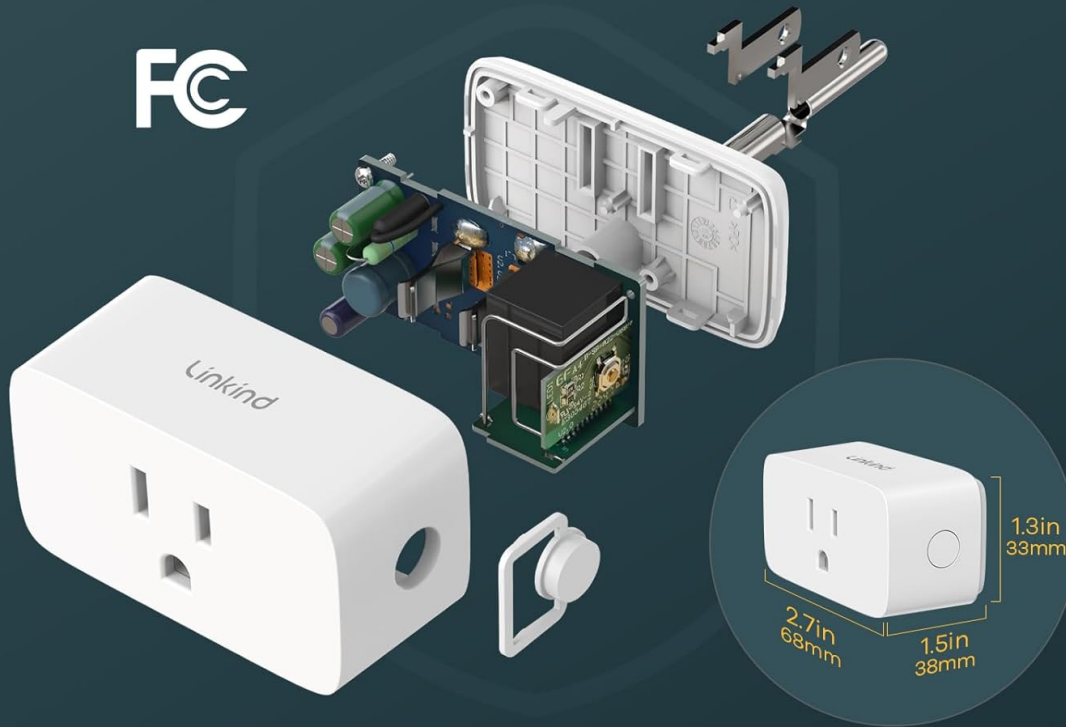


Image: A diagram illustrating the safety features and dimensions of the Linkind Smart Plug, including input 15A 120V, max output 1800W, fire-resistant 750°C, short-circuit protection, and overloaded protection, along with its compact size (2.7in x 1.5in x 1.3in).

WARRANTY AND SUPPORT

Linkind products typically come with a **1-Year Coverage** warranty. For detailed warranty information, product support, or technical assistance, please visit the official Linkind website or contact their customer service.

Customer Service: Live customer service is generally available Monday-Friday, 9 AM - 5 PM PST. You can find more information and contact details on the [Linkind Amazon Store](#).





Image: A graphic highlighting Linkind's commitment, including "10 Million Lighting Products sold", "TOP CMMI5 Certification", "1 Year Coverage", and "Live Customer Service Mon.-Fri. 9-5 PST".

© 2024 Linkind. All rights reserved.
For the latest information, visit [Linkind Official Store](#).

Related Documents - LC09003256

	<p>Linkind Smart Plug with Light Operation Manual</p> <p>Operation manual for the Linkind Smart Plug with Light, detailing installation, function introduction, troubleshooting, and safety precautions. Supports Matter, Alexa, Apple Home, and Google Home.</p>
	<p>Linkind Wi-Fi Smart Plug Operation Manual and Quick Start Guide</p> <p>Comprehensive operation manual and quick start guide for the Linkind Wi-Fi Smart Plug, detailing installation, setup, LED indicators, app integration with Matter, and important safety warnings and cautions.</p>
	<p>Linkind Matter Smart Devices: Setup, Troubleshooting, and Features Guide</p> <p>A comprehensive guide to Linkind Wi-Fi smart bulbs and plugs, covering Matter integration, setup, troubleshooting, and frequently asked questions. Learn how to connect, control, and resolve issues with your smart home devices.</p>
	<p>Linkind Matter Smart Devices User Guide: Setup, Alexa, Google Home, Apple Home, SmartThings Integration</p> <p>Comprehensive user guide for Linkind Matter Wi-Fi smart devices including bulbs, plugs, and switches. Learn step-by-step setup for Alexa, Google Home, Apple Home, SmartThings, and AiDot. Includes compatibility, features, and troubleshooting.</p>

	<p>Linkind Matter Wi-Fi Smart Devices User Guide</p> <p>Comprehensive user guide for Linkind Matter Wi-Fi Smart Devices, covering setup with Alexa, Google Home, Apple Home, SmartThings, and AiDot. Includes troubleshooting and support information.</p>
	<p>Linkind Matter Wi-Fi Smart Light Bulbs User Guide</p> <p>Comprehensive user guide for Linkind Matter Wi-Fi Smart Light Bulbs, covering setup, compatibility with Alexa, Google Home, Apple Home, and SmartThings, features, and troubleshooting.</p>