

Manuals+

[Q & A](#) | [Deep Search](#) | [Upload](#)

manuals.plus /

- › [BaBylissPRO](#) /
- › [BaBylissPRO FXONE LO-PROFX Professional Cordless Clippers User Manual](#)

BaBylissPRO FX829

BaBylissPRO FXONE LO-PROFX Professional Cordless Clippers User Manual

Model: FX829

INTRODUCTION

This manual provides comprehensive instructions for the safe and effective use of your BaBylissPRO FXONE LO-PROFX Professional Cordless Clippers. Please read all instructions carefully before use and retain this manual for future reference.

COMPONENTS AND PACKAGE CONTENTS

Your BaBylissPRO FXONE LO-PROFX Professional Cordless Clippers package includes the following items:

FXONE

LO-PROFX

Power on with precision tools.



Image: The package contents include the clipper, cleaning brush, 6 clipper guards, screwdriver, lubricating oil, charging cord, battery-charging stand, FXONE battery, and blade cover.

- FXONE LO-PROFX Professional Cordless Clipper
- Interchangeable FXONE Lithium Battery
- Battery Charging Stand
- 6 Clipper Guards (various sizes)
- Cleaning Brush
- Lubricating Oil
- Charging Cord
- Blade Cover
- Screwdriver (for blade adjustment)

SETUP

1. Battery Installation and Charging

The FXONE LO-PROFX Clippers feature an innovative interchangeable battery system, ensuring continuous operation. The battery can be easily removed and charged separately.



Image: A four-panel image illustrating the steps to change the battery: press the red release button, remove the battery, replace with a charged battery, and power on.

1. To remove the battery, locate the red release button on the back of the clipper and press it firmly. The battery will eject from the base.
2. Place the battery into the charging stand. The stand is designed to charge the battery independently.
3. A full charge takes approximately 2 hours and provides up to 2.5 hours of runtime.
4. To insert a charged battery, align it with the opening at the base of the clipper and push until it clicks securely into place.

2. Blade Adjustment

The clipper features a 5-position locking stretch taper lever for precise cutting length adjustments. The ultra-thin MIM blade is designed for clean lines and smooth fades.

PRECISION POWERED

Power the entire FXONE collection with the same interchangeable lithium ion battery.



Image: A detailed view of the clipper highlighting the ultra-thin blue metal-injection molded blade, 5-position locking stretch taper lever, ergonomic grip, and metal shield cover.

- Use the taper lever on the side of the clipper to adjust the cutting length of the blade. The locking mechanism ensures the setting remains stable during use.
- For zero-gap adjustment, refer to the detailed instructions in the included manual or consult a professional.

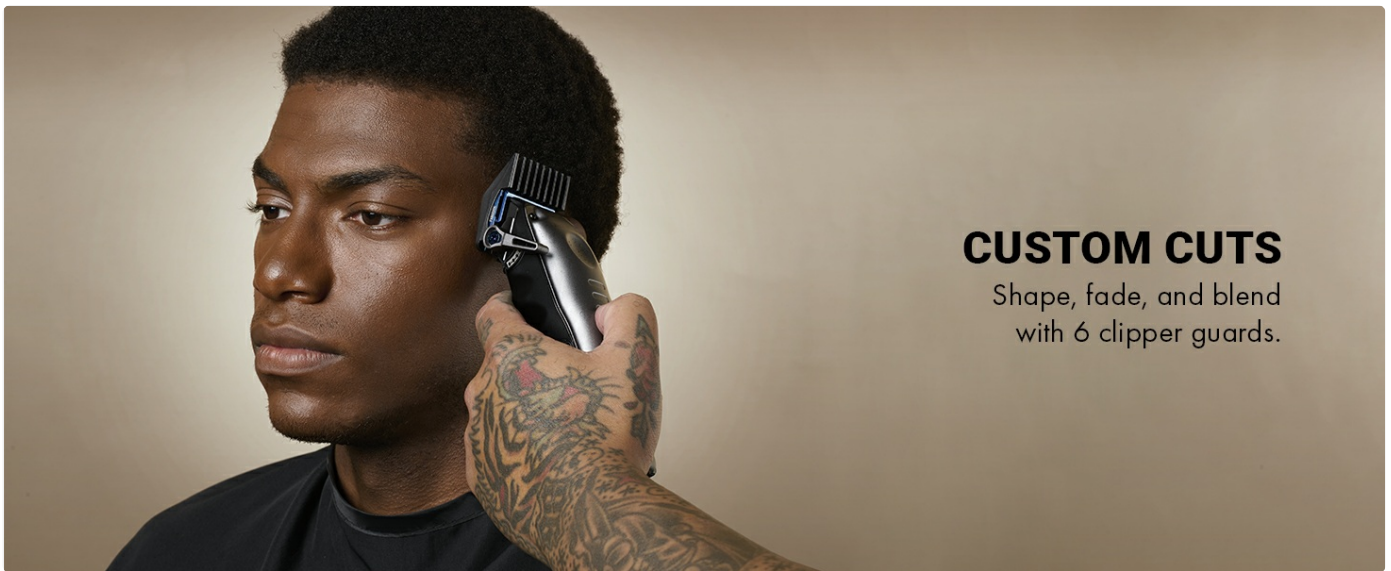
OPERATING INSTRUCTIONS

1. Powering On/Off

To turn the clipper on or off, use the power switch located on the side of the unit. The N1 brushless motor provides 6,800 RPM / 13,600 SPM for efficient cutting.

2. Using Clipper Guards

Attach the desired clipper guard to achieve various cutting lengths for shaping, fading, and blending.



CUSTOM CUTS

Shape, fade, and blend
with 6 clipper guards.

Image: A barber using the BaBylissPRO FXONE LO-PROFX clipper with a guard to create a custom cut on a client's hair.

- Select the appropriate guard size for your desired hair length.
- Snap the guard securely onto the clipper blade.
- Begin cutting, moving the clipper against the direction of hair growth for an even cut.

3. Battery Level Indicator

The clipper features a battery level indicator to show the remaining charge. This indicator is typically located at the base of the clipper and illuminates to show battery status.

MAINTENANCE

1. Blade Cleaning and Oiling

Regular cleaning and oiling are crucial for maintaining the performance and longevity of your clipper blades. The MIM blade features built-in oil reservoirs to reduce friction and lower blade temperature.



Image: A sequence of images demonstrating blade care: brushing off hair, applying lubricating oil, and using a blade spray.

1. After each use, turn off the clipper and remove any attached guards.
2. Use the provided cleaning brush to remove loose hair from the blades.
3. Apply a few drops of lubricating oil to the blades while the clipper is running for a few seconds to ensure even

distribution.

4. For thorough cleaning, a blade spray can be used as directed on the product.

TROUBLESHOOTING

Problem	Possible Cause	Solution
Clipper not turning on	Battery is dead or not properly inserted.	Ensure battery is fully charged and correctly inserted. Check the battery level indicator.
Clipper pulling hair	Blades are dull, dirty, or not properly oiled.	Clean and oil the blades. If problem persists, consider replacing the blades.
Reduced cutting performance	Blades are dirty, dull, or motor is struggling due to low battery.	Clean and oil blades. Ensure battery is fully charged.

SPECIFICATIONS

Feature	Detail
Model Name	BaBylissPRO FXONE LO-PROFX
Item Model Number	FX829
Brand	BaBylissPRO
Motor Type	N1 Brushless Motor
Motor Speed	6,800 RPM / 13,600 SPM
Blade Material	Titanium (Metal Injection Molded)
Battery Type	Interchangeable Lithium Ion
Runtime	Up to 2.5 hours per battery
Charging Time	2 Hours
Item Weight	0.94 Kilograms (approx. 2.07 Pounds)
Included Components	Clipper, battery, charging station, blade, motor, comb attachments, scissors, brush, cape, case, cleaning accessories

OFFICIAL PRODUCT VIDEOS

NEW FXONE System Overview

Your browser does not support the video tag.

Video: An official overview of the new FXONE system, showcasing the interchangeable battery, motor, blades, and various tools including the LO-PROFX clipper, trimmer, and shaver.

WARRANTY AND SUPPORT

For warranty information, product registration, or technical support, please refer to the documentation included in your product packaging or visit the official BaBylissPRO website. Keep your purchase receipt as proof of purchase for any warranty claims.

