

VEVOR 2KW Bluetooth Parking Heater

VEVOR 2KW 12V Diesel Air Heater with Bluetooth Control User Manual

Model: 2KW Bluetooth Parking Heater

1. INTRODUCTION

This manual provides essential information for the safe and efficient operation of your VEVOR 2KW 12V Diesel Air Heater. Please read these instructions thoroughly before installation and use to ensure proper function and longevity of the product. This heater is designed to provide auxiliary heating for various applications including vehicles, RVs, boats, and cabins.



Your safety is paramount. Adhere to all warnings and instructions to prevent injury or damage.

- Ensure proper ventilation when operating the heater to prevent carbon monoxide buildup.
- Do not operate the heater in enclosed spaces without adequate airflow.
- Keep flammable materials away from the heater's exhaust and air outlet.
- Regularly inspect fuel lines and connections for leaks.
- The heater is equipped with overheating protection, activating at temperatures $\geq 270^{\circ}\text{C}$ (518°F). Do not bypass safety features.
- Ensure the power supply matches the heater's requirements (12V).
- Installation should be performed by a qualified individual if you are unsure.



Image 2.1: The heater incorporates multiple safety features, including overheating protection and compliance certifications.

3. PACKAGE CONTENTS

Verify that all components are present upon unpacking:

- Diesel Air Heater Unit
- Fuel Tank (10 L / 2.6 Gal)
- Exhaust Silencer
- Mounting Plate
- User Manual
- Remote Control
- LCD Panel
- Wire Harness
- Fuel Pump
- Fuel Filter

- Air Filter
- Inlet and Outlet Pipes
- Cable Zip Ties
- Installation Kit (screws, clamps, etc.)
- Fuel Hose
- Fuel Pump Clip
- Air Outlet Grille



PACKAGE CONTENT



Image 3.1: Detailed view of all components included in the product package.

4. SPECIFICATIONS

Feature	Specification
Heating Power	2 kW

Rated Voltage	12 V
Applicable Area	10-15 m²
Fuel Consumption	0.12-0.26 L/h
Fuel Tank Capacity	10 L
Operating Altitude	Up to 5500 m (18045 ft)
Temperature Range	8°C to 36°C
Overheating Protection	≥ 270°C (518°F)
Control Methods	Bluetooth App, Remote Control, LCD Panel
Product Dimensions	34.04 x 11.43 x 13.97 cm
Item Weight	4.99 kg

5. SETUP AND INSTALLATION

Proper installation is crucial for the heater's performance and safety. Refer to the included user manual for detailed diagrams and step-by-step instructions.

- 1. Choose a Location:** Select a suitable, stable, and well-ventilated location for the heater unit and fuel tank. Ensure adequate clearance from flammable materials.
- 2. Mounting:** Use the provided mounting plate and installation kit to securely fasten the heater.
- 3. Exhaust System:** Install the exhaust pipe and silencer, ensuring the exhaust gases are directed safely away from the heated area and vehicle cabin.
- 4. Air Intake/Outlet:** Connect the air intake and outlet pipes. Ensure the air intake is clear of obstructions and the hot air outlet is directed as desired.
- 5. Fuel System:** Install the fuel pump, fuel filter, and fuel hose. Connect the fuel hose from the tank, through the filter and pump, to the heater. Ensure all connections are tight and leak-free.
- 6. Electrical Connections:** Connect the wire harness to the heater and to a 12V power source, observing correct polarity. Install the LCD control panel and connect the remote control receiver.
- 7. Initial Fueling:** Fill the fuel tank with diesel. It is recommended to prime the fuel system before the first start-up to ensure fuel reaches the heater.



Image 5.1: The VEVOR diesel heater is suitable for various applications, including heating vans and RVs in cold conditions.

6. OPERATING INSTRUCTIONS

The VEVOR diesel air heater offers multiple control methods for convenience.

6.1 Starting the Heater

1. Ensure the fuel tank has sufficient diesel and all connections are secure.
2. Turn on the main power switch.
3. Use one of the following methods to start the heater:
 - **LCD Panel:** Navigate the menu on the LCD display to initiate heating.
 - **Remote Control:** Press the power button on the remote control (effective up to 10m).
 - **Bluetooth App:** Download the dedicated app to your smartphone. Connect via Bluetooth (up to 30m range) and use the app interface to control the heater.

6.2 Adjusting Temperature and Settings

- The temperature can be set between 8°C and 36°C using the LCD panel, remote control, or Bluetooth

app.

- The heater features automatic altitude adjustment, allowing it to operate efficiently at heights up to 5500m (18045ft) without manual intervention.
- Utilize the timer function for scheduled heating.
- The voice transmission feature provides operational feedback.

3 INTELLIGENT CONTROL METHODS



Image 6.1: The heater offers flexible control options via Bluetooth, remote, and LCD panel.

RUN SMOOTHLY EVEN AT **18045FT** ALTITUDE



Image 6.2: The heater maintains smooth operation even at high altitudes, up to 18045 feet.

6.3 Fuel Efficiency

The heater is designed for low fuel consumption, using 0.12 to 0.26 L/h of diesel. A full 10-liter tank can provide heat for up to 38 hours, depending on the heat setting.

UNDER 1 GAL DIESEL FOR 1 NIGHT



Energy-efficient
Fuel Pump



Aluminum
Body



100%
Combustion

VEVOR: 0.12L-0.26 (L/h)

Other: 0.26L-0.4 (L/h)

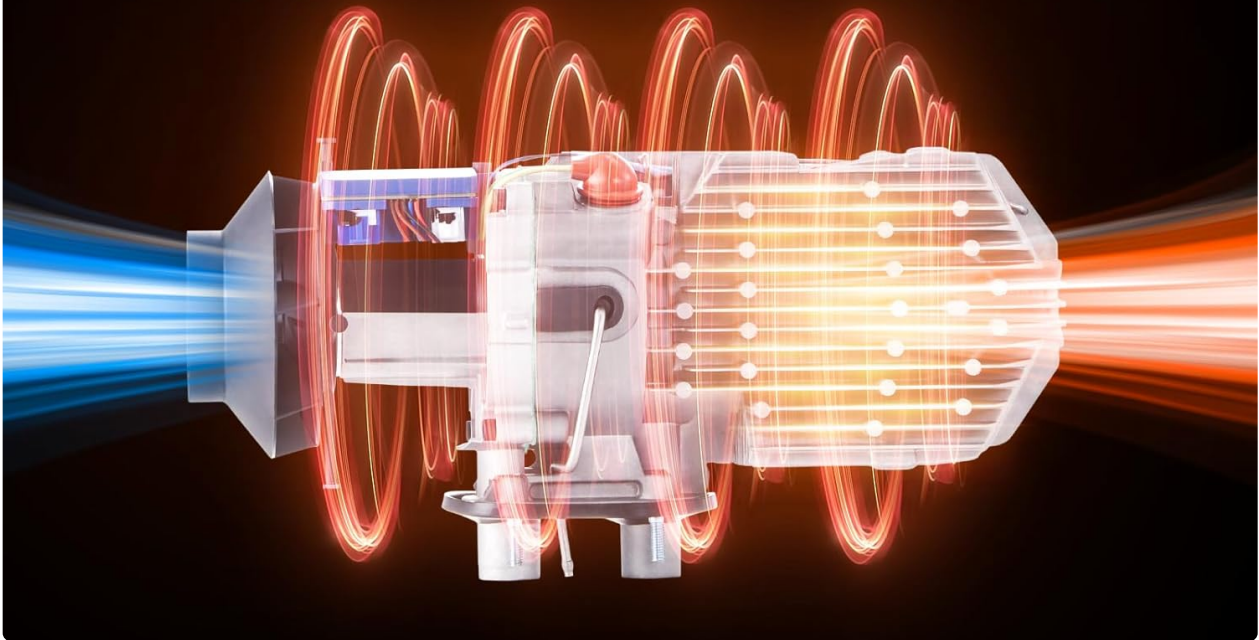


Image 6.3: The heater features an energy-efficient fuel pump and aluminum heat exchanger for optimal performance.

7. MAINTENANCE

Regular maintenance ensures optimal performance and extends the lifespan of your heater.

- **Cleaning:** Periodically clean the air intake and exhaust outlets to prevent blockages.
- **Fuel Filter:** Inspect and replace the fuel filter as needed to ensure clean fuel delivery.
- **Air Filter:** Check and clean or replace the air filter to maintain proper airflow.
- **Connections:** Regularly check all fuel and electrical connections for tightness and signs of wear or damage.
- **Storage:** If storing the heater for an extended period, drain the fuel tank and ensure the unit is clean and dry.

8. TROUBLESHOOTING

If you encounter issues, refer to the following common troubleshooting steps. For persistent problems, contact customer support.

Problem	Possible Cause	Solution
Heater does not start	No fuel, low battery voltage, faulty connection, air in fuel line	Check fuel level, verify 12V power, inspect connections, prime fuel system
Low heat output	Clogged air filter, exhaust blockage, incorrect settings	Clean/replace air filter, clear exhaust, adjust temperature settings
Excessive smoke	Poor fuel quality, incorrect fuel pump settings, carbon buildup	Use clean diesel, check fuel pump calibration, perform maintenance cleaning
Unusual noise	Loose components, fan obstruction, fuel pump noise	Inspect for loose parts, clear fan, ensure fuel pump is securely mounted

9. WARRANTY AND SUPPORT


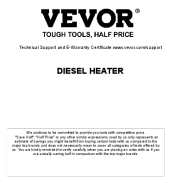

For warranty information and technical support, please refer to the official VEVOR website or contact VEVOR customer service directly. Keep your purchase receipt as proof of purchase for any warranty claims.




Manufacturer: VEVOR

Model Number: 2KW Bluetooth Parking Heater

ASIN: B0CFQQXLCH

Related Documents - 2KW Bluetooth Parking Heater

	<p>VEVOR Diesel Air Heater Manual: XMZ-D1 & XMZ-D2 Operation and Installation Guide</p> <p>Comprehensive guide for VEVOR diesel air heaters (models XMZ-D1, XMZ-D2), covering installation, operation, safety precautions, troubleshooting, and Bluetooth connectivity. Learn how to install, use, and maintain your VEVOR diesel heater for optimal performance.</p>
	<p>VEVOR Diesel Heater User Manual & Installation Guide</p> <p>Comprehensive user manual for VEVOR Diesel Heaters, including models XMZ-L-D1, XMZ-W-D1, and XMZ-F-D1. Covers safety, installation, operation, troubleshooting, and maintenance.</p>
	<p>VEVOR Air Heater KW2.0 5.0 8.0 Manual - Installation, Operation & Maintenance</p> <p>Comprehensive guide for VEVOR Air Heater models KW2.0, 5.0, and 8.0. Includes detailed instructions on installation, operation, control modes, circuit diagrams, troubleshooting, and maintenance for diesel air heaters.</p>

	<p>VEVOR Diesel Heater (XMZ-D1, XMZ-D2) User Manual and Installation Guide</p> <p>Comprehensive user manual and installation guide for VEVOR Diesel Heaters, models XMZ-D1 and XMZ-D2. Covers safety instructions, product functions, internal structure, installation positions, model specifications, packing list, operation, troubleshooting, and Bluetooth connectivity.</p>
	<p>VEVOR Diesel Heater: User Manual and Operation Guide</p> <p>Comprehensive user manual for VEVOR Diesel Heaters, including models XMZ-TB20 Pro, XMZ-TB40, XMZ-TB30, and XMZ-HTB1. Learn about installation, operation, safety, and troubleshooting.</p>
	<p>VEVOR Air Heater KW2.0 5.0 8.0 Manual: Installation, Operation, and Maintenance Guide</p> <p>Comprehensive manual for VEVOR Air Heater models KW2.0, 5.0, and 8.0, covering installation, operation, technical specifications, troubleshooting, and maintenance. Includes guidance for 12V and 24V systems.</p>