

JRready ST6255-100

JRready Deutsch DT Connector Terminal Kit Size 16

Model: ST6255-100

1. INTRODUCTION

This manual provides instructions for the proper use and installation of the JRready Deutsch DT Connector Terminal Kit Size 16. This kit includes 100 male pin contacts (1060-16-0122) and 100 female socket contacts (1062-16-0122), designed for 14-18AWG wire. These contacts are compatible with various Deutsch connector series, including DT, HDP20, HD30, DTHD, HD10, DRC, and Jiffy Splice series.

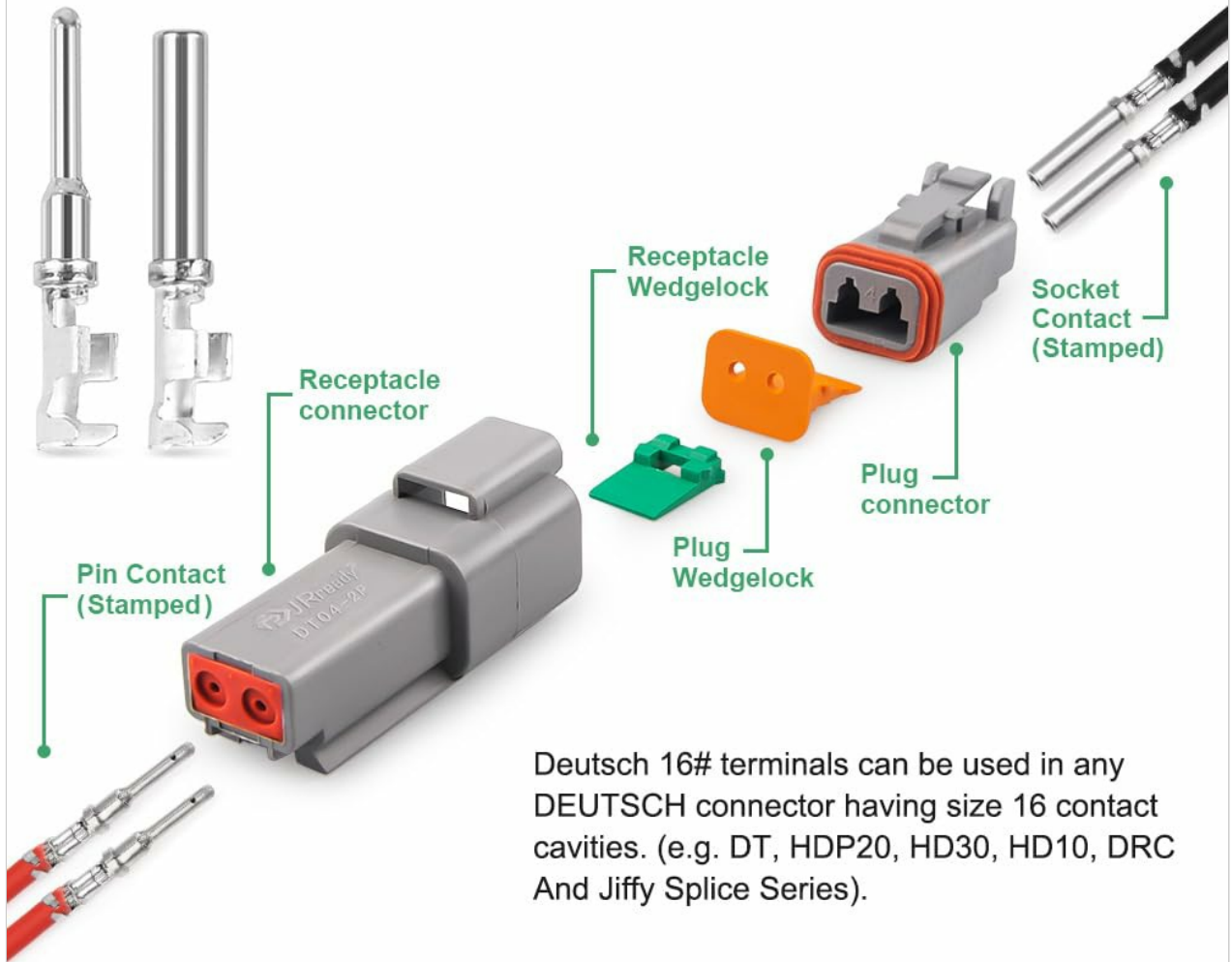
The terminals are constructed from phosphor bronze for abrasion and corrosion resistance, with tin-plated crimping wings for enhanced weldability. This design ensures reliable electrical connections.

2. PRODUCT COMPONENTS

The kit contains the following components:

- **100x Male Pin Contacts:** Part Number 1060-16-0122
- **100x Female Socket Contacts:** Part Number 1062-16-0122

Each contact features a wire barrel, insulation barrel, retention shoulder, and a mating end. The socket contacts include a protective sleeve. The retention shoulder secures the contact within the connector housing, preventing accidental dislodgement.



Deutsch 16# terminals can be used in any DEUTSCH connector having size 16 contact cavities. (e.g. DT, HDP20, HD30, HD10, DRC And Jiffy Splice Series).

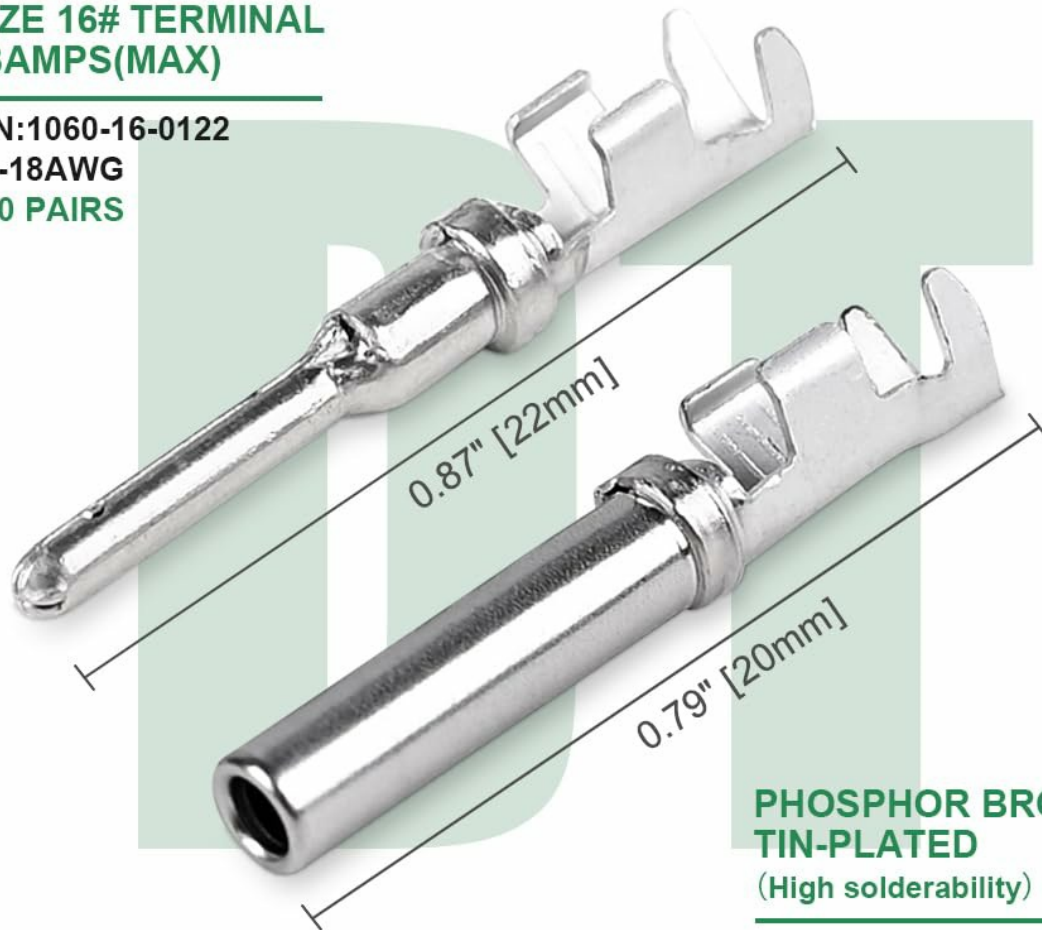
NOTE

⚠ Connectors must be purchased separately.

Figure 2.1: Exploded view of Deutsch DT connector components, including pin and socket contacts.

SIZE 16# TERMINAL 13AMPS(MAX)

PIN:1060-16-0122
14-18AWG
100 PAIRS



**PHOSPHOR BRONZE
TIN-PLATED**
 (High solderability)

SOCKET:1062-16-0122
14-18AWG
100 PAIRS

Figure 2.2: Detailed view of Size 16 stamped and formed contacts, showing dimensions and phosphor bronze, tin-plated material.

Note: Connectors (housings and wedgelocks) must be purchased separately.

3. SPECIFICATIONS

Feature	Specification
Model	ST6255-100
Contact Type	Open Barrel, Stamped & Formed
Contact Size	Size 16
Wire Gauge Range	14-18 AWG
Maximum Current	13 Amps

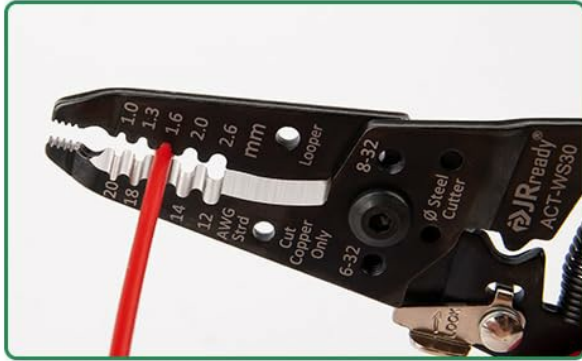
Contact Material	Phosphor Bronze
Plating	Tin-plated (crimping wings)
Maximum Voltage	24 Volts (DC)
Compliance	RoHS

4. SETUP & INSTALLATION

4.1 Crimping Process

For optimal performance, use a dedicated crimping tool such as the JRready ACT-LY-16DT. Follow these steps for proper crimping:

- Strip the Wire:** Carefully strip approximately 5mm (0.2 inches) of insulation from the end of the wire. Ensure the wire strands are not twisted or damaged.
- Prepare the Crimping Tool:** Open the crimping tool jaws and ensure the positioner is correctly set for Size 16 contacts.
- Insert Terminal:** Lift the positioner slightly to expose the locating hole. Insert the contact terminal into the hole of the positioner, ensuring it is fully seated at the bottom. Close the handle slightly to hold the terminal in place.
- Insert Wire:** Insert the stripped wire into the terminal's wire barrel.
- Crimp:** Fully close the crimping tool handles until the ratchet mechanism releases. This ensures a complete and secure crimp.
- Inspect Crimp:** Remove the crimped terminal and inspect it for proper formation. The wire strands should be fully captured within the conductor crimp, and the insulation should be spaced appropriately from the crimp area.



Step 1: Strip the wire into proper length (1/4").



Step 2: Choose the correct positioning hole and insert the terminal.

STEP 3

Crimping with the JRready crimping tool.



STEP 4

Get a crimped wire terminal.

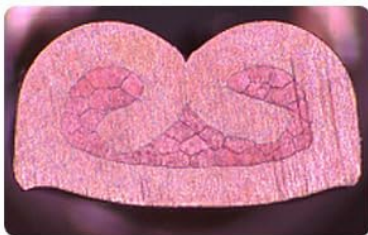
Figure 4.1: Step-by-step guide for crimping contacts using a JRready crimping tool.



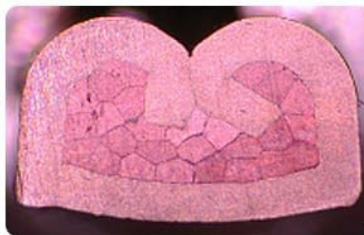
PS: JRready ACT-LY-16DT crimping tool must be purchased separately.

CCP: Crimp Compression Percentage

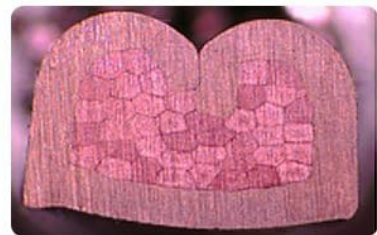
PERFECTLY CRIMPING



18AWG CCP=80%
Pull-Out Force 168N



16AWG CCP=83%
Pull-Out Force 231N



14AWG CCP=78%
Pull-Out Force 282N

Figure 4.2: Recommended JRready ACT-LY-16DT crimping tool for professional standard crimping.

4.2 Connector Assembly

After crimping the contacts onto the wires, insert them into the appropriate Deutsch connector housing. Ensure the contacts are fully seated and the wedgelocks are installed to secure them.

Your browser does not support the video tag.

Video 4.1: This video demonstrates the crimping process for JRready Deutsch stamped contacts and their insertion into a connector, ensuring a secure and reliable connection.

5. OPERATING INSTRUCTIONS

Once assembled, the Deutsch DT connectors provide a robust and reliable electrical connection. Ensure that the male and female connector halves are fully mated and the wedgelocks are properly engaged to prevent accidental disconnection and maintain environmental sealing.

CONNECTOR TERMINAL KIT

for DT DTM DTP Series 2-3-4-6-8-12 Pins



Size 12# Contacts

Wire Range: 12-14AWG
Weight: 0.003lb



Size 16# Contacts

Wire Range: 14-20AWG
Weight: 0.002lb



Size 20# Contacts

Wire Range: 16-22AWG
Weight: 0.0013lb



Figure 5.1: A fully assembled Deutsch connector, demonstrating a secure connection.

6. MAINTENANCE

Deutsch DT connectors are designed for durability and require minimal maintenance. However, periodic inspection is recommended, especially in harsh environments.

- **Visual Inspection:** Check for any signs of physical damage, corrosion, or loose connections.
- **Cleaning:** If necessary, clean the connector surfaces with a non-conductive, residue-free cleaner. Avoid using abrasive materials.
- **Re-seating:** If a connection appears loose, ensure the contacts are fully seated and the wedgelocks are properly installed.

7. TROUBLESHOOTING

If you encounter issues with your Deutsch DT connectors, consider the following:

- **Poor Electrical Connection:** This is often due to an improper crimp. Ensure the wire is stripped to the correct length (approx. 5mm) and fully inserted into the terminal before crimping. The crimp should capture all wire strands securely.
- **Bent or Damaged Terminal:** If the terminal appears bent or damaged after crimping, it may indicate incorrect tool usage or improper positioning. Always ensure the terminal is correctly seated in the crimping tool's positioner.
- **Terminal Not Seating in Connector:** Verify that the terminal is correctly crimped and that there are no obstructions in the connector cavity. Ensure the wire gauge matches the terminal size.
- **Connector Disconnection:** Confirm that the wedgelocks are fully inserted and locked into place after

mating the connector halves.

8. SAFETY INFORMATION

Always observe basic electrical safety precautions when working with electrical components:

- Disconnect power before working on any electrical system.
- Use appropriate personal protective equipment (PPE), such as safety glasses.
- Ensure all connections are secure to prevent short circuits or arcing.
- Do not exceed the specified current (13A) or voltage (24V DC) ratings for these contacts.

9. WARRANTY & SUPPORT

JRready products are backed by a commitment to quality. For any inquiries or support needs, please contact JRready customer service. The product includes a 12-month after-sale service period.