



Manuals.plus /

› NUFEB5 /

› NUFEB5 4-Channel 1080P Wireless NVR Security Camera System User Manual

NUFEB5 6026HEC

NUFEB5 4-Channel 1080P Wireless NVR Security Camera System

Model: 6026HEC - User Instruction Manual

PRODUCT OVERVIEW

The NUFEB5 4-Channel 1080P Wireless NVR Security Camera System provides comprehensive surveillance for your home or business. Featuring 1080P spotlight color night vision WiFi waterproof cameras with two-way audio and a pre-installed 1TB hard drive, this system offers convenient plug-and-play setup and remote monitoring capabilities.

Key features include:

- **Convenient Plug-and-Play Setup:** Requires only a DC 12V power supply. Cameras and NVR are pre-paired for easy DIY installation.
- **Secure Video Storage:** Pre-installed 1TB hard drive for up to 30 days of continuous recording, with optional cloud storage.
- **Crystal-Clear Video & Audio:** Stunning 1080P video quality, 3 array infrared LED lights for low light, IP65 waterproof metal cameras, and two-way audio.
- **4pc Color Night Vision Cameras:** Record clearly up to 65 feet away at night with smart alarm push notifications.
- **Remote Monitoring:** Access live footage from your phone or computer using the "Tris Home" mobile app (iOS/Android) and PC client.

WHAT'S IN THE BOX

Upon unboxing your NUFEB5 Security Camera System, you will find the following components:

- 1 x NVR Unit
- 4 x 1080P Wireless Cameras
- 4 x 12V 1A Power Adapters for Cameras
- 4 x External Antennas for Cameras
- 1 x 12V 2A DC Power Adapter for NVR
- 4 x Wall Plugs and Screws for Camera Mounting
- 1 x Wired Optical Mouse

- 1 x LAN Cable
- 1 x Warranty Card
- 1 x User Manual



Figure 1: All components included in the NUFEB Security Camera System package.

SETUP GUIDE

NVR Unit Overview

The NVR unit features a durable metal casing. The front panel includes LED indicators for recording (Rec), alarm (Alarm), and power (Pwr) status. The rear panel provides various input/output ports:

- 1 x HDMI Output
- 1 x VGA Port
- 1 x Audio Output Headphone Jack
- 1 x Ethernet LAN Port

- 2 x USB 2.0 Ports
- 1 x DC 12V Power Socket
- 2 x External Antenna Connectors



Figure 2: NVR rear panel connections.

Camera Features and Mounting

Each camera is constructed from plastic and features a 1080P 2-megapixel lens, four LED spotlights, a built-in microphone, a speaker for two-way audio, and a motion/night vision sensor. For flexible installation, each camera includes a 360-degree swivel feature with a tightening wheel and a 180-degree tilt feature with a tightening bolt. A gold-plated connector is provided for the external antenna to ensure maximum reception.

The camera base has three holes for secure mounting on wood, concrete, or metal surfaces. A cut-out prevents the power cable from being squeezed, and a foam padding absorbs vibrations.

24/7recording

Connect the hard disk or purchase cloud service

WiFi surveillance will record 24 hours a day, you can play back the recorded content on your phone or computer anytime and anywhere.

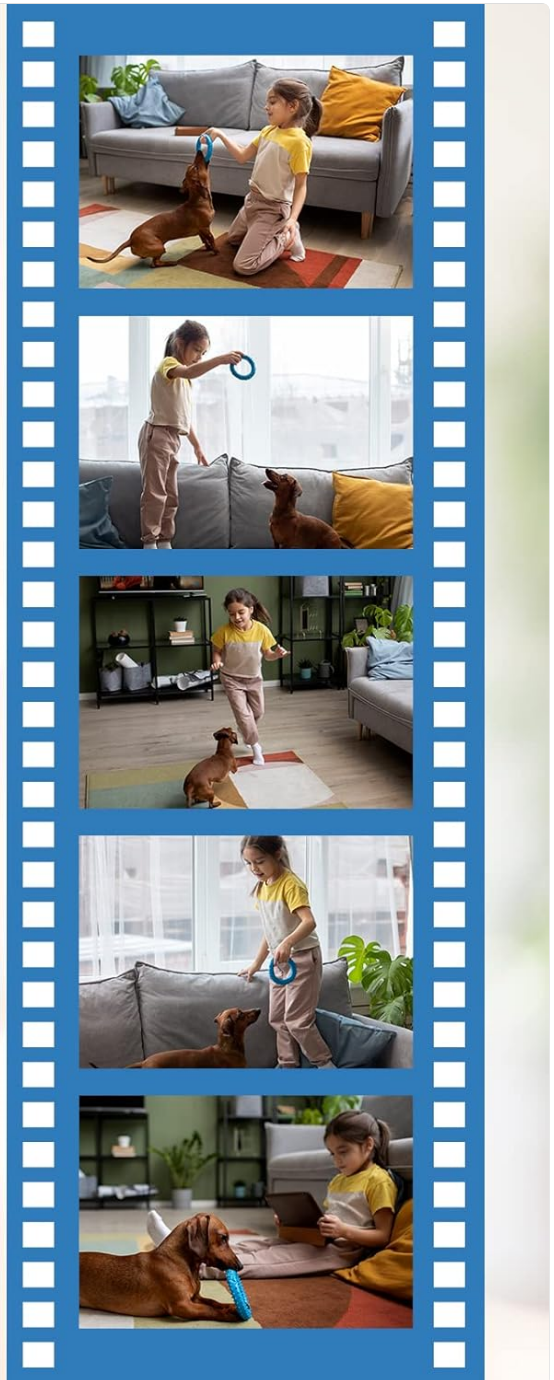


Figure 3: Front view of a camera highlighting its features.



Figure 4: Camera mounting and antenna connection.

Initial Setup and Camera Pairing

The cameras and NVR come pre-paired for a true plug-and-play experience. Simply connect the NVR to a monitor via VGA or HDMI, and power on all devices. The system will automatically begin connecting the cameras in the background while you complete the first-time setup wizard.

The setup wizard will guide you through:

- Setting up a secure password for the NVR.
- Configuring security questions for password recovery.
- Testing network connectivity (requires a wired LAN connection for internet access, as the NVR does not support Wi-Fi for internet connection).
- Displaying a QR code to download the mobile monitoring app.
- Adjusting the display resolution for the connected monitor.

Video 1: Unboxing and initial setup of the NUFEBES NVR system. This video demonstrates the components included and the straightforward plug-and-play process.

Video 2: Detailed walkthrough of the security camera system settings. This video covers the NVR interface, camera image adjustments, and playback options.

OPERATING THE SYSTEM

NVR Interface and Settings

The NVR interface provides extensive options for managing your security system. Right-click anywhere on the screen to access the main menu. From here, you can navigate to various settings:

- **IP Channel:** Manage camera connections.
- **Playback:** Review recorded footage.
- **Record Config:** Configure recording schedules and modes.
- **System:** General system settings, including display, account, and backup options.
- **Alarm:** Configure intelligent alerts and human detection.
- **Network:** View network status (NVR requires wired connection for internet access).
- **Date/Time:** Set system date and time.
- **Custom View:** Customize camera display layouts.
- **Advanced:** Access advanced system settings, including HDD info, firmware upgrade, and logs.

For optimal navigation, it is recommended to use a higher-quality wired or wireless mouse, as the included optical mouse may be less precise.

Image and Color Settings

To adjust individual camera settings, right-click on any camera view and select 'IPC parameters' or 'Color Setting'.

- **Image Set:** Adjust brightness, contrast, saturation, hue, gain, and sharpness. You can also switch between various infrared modes (Full Color, Black and White, Smart Alert, Intelligent Variable Light, Smart Infrared) and image styles (Style 1, Style 2, Style 3).
- **WDR (Wide Dynamic Range):** Enable WDR to improve image quality in high-contrast or poorly lit conditions, capturing details in both bright and dark areas. Note that 'Quality Preferred' uses more storage and resources, potentially causing latency, while 'Fluency Preferred' ensures smoother performance at a lower resolution.

Video Playback and Backup

To access recorded footage, right-click on the screen and select 'Playback'. You have several playback options:

- **Common Playback:** Allows individual control of each camera's timeline for playback.
- **Sync Playback:** Synchronizes the timeline for all selected channels, playing them simultaneously. Each playback is recorded with audio. To isolate audio from a specific camera during sync playback, click on that camera's view.

To back up a specific period of footage:

1. Set the cursor on the timeline where you want the clip to start.
2. Click the scissors icon to mark the start point.
3. Play or navigate to the desired end point and click the scissors icon again to mark the end point.
4. Click the floppy disk icon to open the backup window.
5. Select your USB disk (the NVR has two USB ports, allowing simultaneous mouse and flash drive connection).
6. Choose the backup format (e.g., H26X) and click 'Start'.

Mobile App Monitoring (Tris Home / XMEye Pro)

The "Tris Home" mobile app (also known as XMEye Pro) allows you to remotely monitor and control your security system

from anywhere with an internet connection.

- **Live View:** View live feeds from individual cameras or multiple channels simultaneously.
- **Two-Way Audio:** Use the 'Talk' feature to speak through the camera's speaker. The app functions like a CB radio: press and hold to speak, release to listen. You can also broadcast your voice through all cameras simultaneously using the 'BC' (Broadcast) option.
- **Audio Monitoring:** Enable/disable live audio from individual cameras.
- **Recording & Snapshots:** Record video clips or take still image snapshots directly to your phone's internal storage.
- **Intelligent Alarm:** Enable 'Allow Notifications' to receive push email notifications for detected events. Activate 'Human Detection' to trigger alarms specifically for human figures.
- **Alarm Sound:** Configure the camera to play an audible alarm when a humanoid object is detected. Choose from preset sounds or record a custom voice.
- **Firmware Upgrade:** Update individual camera firmware directly through the app.



Figure 5: Mobile app interface for remote monitoring.

MAINTENANCE

Regular maintenance ensures the longevity and optimal performance of your security system.

- **Firmware Upgrades:** Periodically check for and apply firmware updates for both the NVR and individual cameras via the mobile app or NVR interface. This ensures you have the latest features and security patches.
- **Hard Drive Management:** The pre-installed 1TB hard drive provides ample storage. Monitor its status via the NVR interface.
- **Physical Cleaning:** Keep camera lenses clean for clear image quality. Ensure cameras are free from obstructions.

TROUBLESHOOTING

Here are some common issues and their solutions:

- **Cameras Not Connecting:** Ensure all cameras and the NVR are powered on. The cameras are pre-paired, so they should connect automatically. If issues persist, try restarting the NVR.
- **Remote Monitoring Not Working:** The NVR requires a wired LAN connection to your router for internet access. It does not support Wi-Fi for connecting to the internet. Ensure your NVR is properly connected to your network.
- **Poor Image Quality:** Check camera lens for dirt or obstructions. Adjust image settings (brightness, contrast, WDR) via the NVR or mobile app.
- **No Audio from Cameras:** Ensure the audio feature is enabled in the mobile app or NVR settings. Check physical connections if using wired audio.
- **Alarm Sound Not Playing:** Verify that the alarm sound feature is enabled in the mobile app's intelligent alarm settings. Ensure the camera's display mode is not set to 'Full Light Mode' if you want audio alarms to function, as audio alarms are disabled in this mode.
- **Mouse Navigation Difficult:** The included optical mouse may be basic. Consider using a higher-quality wired or wireless USB mouse for smoother navigation within the NVR interface.

SPECIFICATIONS

Brand	NUFEBS
Model Number	6026HEC
Connectivity Technology	Wireless, Wired
Video Capture Resolution	1080p
Number of Channels	4
Memory Storage Capacity	1 TB (Pre-installed)
Item Dimensions L x W x H	14.57 x 10.63 x 5.91 inches
Compatible Devices	Personal Computers, Cameras
Signal Format	Digital
Other Camera Features	4pcs 1080P Spotlight Color Night Vision WiFi Waterproof Surveillance Cameras with 3 array Infrared LED lights and Two-Way Audio
Low Light Technology	Infrared
Night Vision Range	65 Feet
Antenna Type	Fixed
Frame Rate	24 FPS
Recording Mode	1080P video and two-way audio
Optical Sensor Technology	Infrared
Hardware Interface	802.11 ac/b/g/n
Lens Type	Wide Angle
Video Input	VGA, HDMI
Viewing Angle	110 Degrees
Item Weight	5.99 pounds
Date First Available	August 15, 2023

WARRANTY AND SUPPORT

Your NUFEBBS Security Camera System comes with a Lifetime Warranty. For any service or support inquiries, please refer to the contact information provided on your warranty card or within the user manual.



Figure 6: Lifetime Warranty Card.