

[Manuals.plus](#) /

› [Pinty](#) /

› [Pinty 4x32 Tactical Rifle Scope User Manual](#)

Pinty 4x32 Tactical Rifle Scope

Pinty 4x32 Tactical Rifle Scope User Manual

Model: 4x32 Tactical Rifle Scope

INTRODUCTION

Thank you for choosing the Pinty 4x32 Tactical Rifle Scope. This manual provides essential information for the safe and effective use, installation, and maintenance of your new scope. Please read this manual thoroughly before operating the device.

SAFETY INFORMATION

- Always handle firearms safely. Follow all local and national firearm safety regulations.
- Ensure the firearm is unloaded and pointed in a safe direction before mounting or adjusting the scope.
- Never look directly at the sun or any intense light source through the scope, as this can cause permanent eye damage.
- Keep the scope and its accessories out of reach of children.
- Do not disassemble the scope. Unauthorized disassembly will void the warranty and may cause damage.

PACKAGE CONTENTS

Verify that all items are present in your package:

- Pinty 4x32 Tactical Rifle Scope
- Hex Wrenches (for mounting and adjustments)
- Cleaning Cloth
- User Manual (this document)
- CR2032 Battery (for reticle illumination)



Image: Contents of the Pinty 4x32 Tactical Rifle Scope package.

PRODUCT FEATURES

The Pinty 4x32 Tactical Rifle Scope is designed for precision and durability. Key features include:

- **4x Magnification:** Provides a fixed 4x magnification for target acquisition.
- **32mm Objective Lens:** Ensures a bright and clear image.

- **Fiber Optic Sight:** Integrated fiber optic sight for rapid target acquisition at close ranges, utilizing ambient light.
- **RGB Illuminated Reticle:** Offers Red, Green, and Blue illumination options, each with 3 brightness levels for optimal visibility in various lighting conditions.
- **Multicoated Lenses:** Enhances light transmission and reduces glare for a crisp, clear, and wide field of view.
- **Adjustable Diopter:** Allows for precise focus adjustment to match individual eyesight.
- **Picatinny Rail Compatibility:** Designed for easy mounting on 20mm Picatinny rails. Includes built-in side Picatinny rails for attaching additional accessories like lasers or flashlights.
- **Durable Construction:** Made from aircraft-grade 6061 aluminum, providing waterproof, fogproof, and shockproof performance for all-weather use.



Image: Key components of the Pinty 4x32 Rifle Scope.



Image: Visual comparison of multicoated vs. standard objective lenses.

SETUP

1. Mounting the Scope

1. **Ensure Firearm Safety:** Before beginning, ensure the firearm is unloaded and safe.
2. **Attach to Picatinny Rail:** Loosen the locking thumb bolts on the scope's base. Align the scope's base with the 20mm Picatinny rail on your firearm.

3. **Positioning:** Slide the scope into the desired position, ensuring proper eye relief (approximately 3 inches).
4. **Secure the Scope:** Tighten the locking thumb bolts firmly to secure the scope to the rail. Do not overtighten.

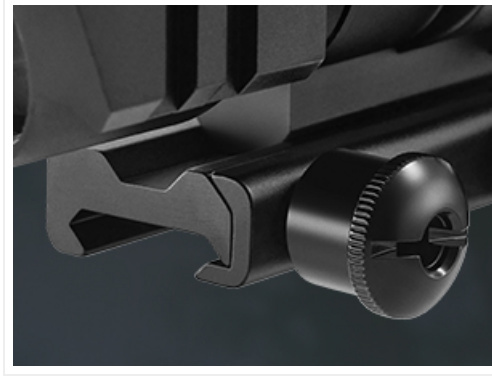


Image: Locking thumb bolts for secure mounting.

2. Installing the CR2032 Battery

1. Locate the battery compartment cap, usually on the illumination adjustment knob.
2. Unscrew the cap.
3. Insert the CR2032 battery with the positive (+) side facing outwards.
4. Screw the cap back on securely.

OPERATING INSTRUCTIONS

1. Adjusting the Diopter

The diopter adjustment allows you to focus the reticle for your individual eyesight, ensuring it appears sharp and clear.

1. Look through the scope at a plain, bright background (e.g., a clear sky or a blank wall).
2. Rotate the diopter adjustment ring (located at the eyepiece) until the reticle appears perfectly sharp.
3. Once set, this adjustment typically does not need to be changed unless a different user operates the scope.



Image: Diopter adjustment ring.

2. Using the RGB Illuminated Reticle

The scope features an illuminated reticle with Red, Green, and Blue color options, each with 3 brightness levels.

1. Locate the illumination adjustment knob on the top of the scope.
2. Rotate the knob to select the desired color (R for Red, G for Green, B for Blue).
3. Continue rotating the knob within the selected color range (1, 2, or 3) to adjust the brightness level. Level 1 is the

dimmest, and Level 3 is the brightest.

4. To turn off the illumination, rotate the knob to the "OFF" position between color settings.



Image: RGB illuminated reticle options and brightness levels.

3. Windage and Elevation Adjustment

Windage (horizontal) and elevation (vertical) adjustments are used to zero the scope to your firearm.

1. **Elevation Adjustment:** The elevation turret is located on top of the scope. Rotate it to adjust the vertical point of impact.
2. **Windage Adjustment:** The windage turret is located on the right side of the scope. Rotate it to adjust the horizontal point of impact.
3. Each click of the turret typically corresponds to a specific change in point of impact at a given distance (e.g., 1/2 MOA per click). Refer to the specifications for precise click values.
4. Perform zeroing at a shooting range following safe practices.

4. Using the Fiber Optic Sight

The integrated fiber optic sight on top of the scope provides a quick, unmagnified aiming solution for close-range engagements.

- The fiber optic sight gathers ambient light to illuminate the front sight post.
- Align the front fiber optic post with the rear sight notch for rapid target acquisition.
- This sight is fixed and does not require battery power.



Image: Fiber optic sight for close-range aiming.

5. Attaching Accessories to Side Picatinny Rails

The scope features 20mm Picatinny rails on both sides, allowing for the attachment of additional accessories.

1. Loosen the mounting screws on your accessory (e.g., laser, flashlight).
2. Slide the accessory onto the side Picatinny rail.
3. Tighten the mounting screws to secure the accessory.

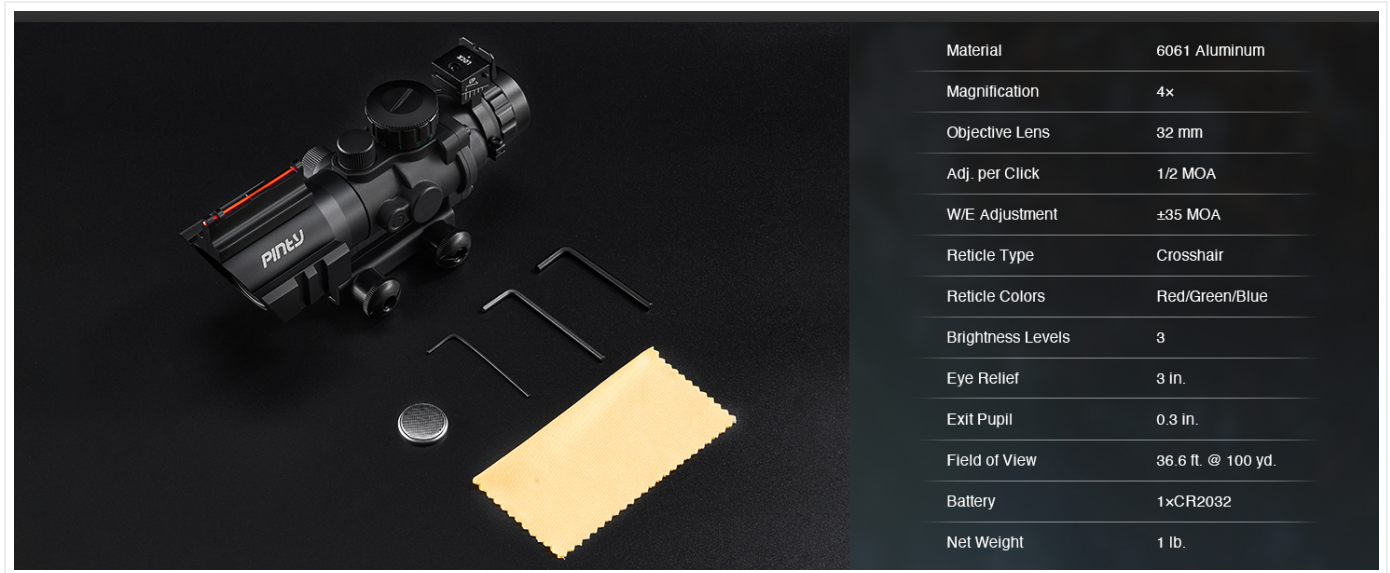


Image: Example of an accessory mounted on the side Picatinny rail.

MAINTENANCE

- **Cleaning Lenses:** Use the provided cleaning cloth or a soft, lint-free cloth specifically designed for optical lenses. Gently wipe away dust and smudges. For stubborn marks, use a small amount of lens cleaning solution. Avoid using harsh chemicals or abrasive materials.
- **Cleaning Body:** Wipe the scope's body with a soft, damp cloth. Do not use solvents.
- **Storage:** Store the scope in a cool, dry place, away from direct sunlight and extreme temperatures. Use lens caps when not in use to protect the lenses.
- **Battery Replacement:** If the illuminated reticle dims or stops working, replace the CR2032 battery. Dispose of old batteries responsibly.
- **Waterproof/Fogproof:** While the scope is designed to be waterproof and fogproof, avoid unnecessary exposure to extreme conditions and always dry the scope thoroughly if it gets wet.

TROUBLESHOOTING

Problem	Possible Cause	Solution
Reticle is blurry	Diopter not adjusted correctly for your eyesight.	Adjust the diopter ring until the reticle is sharp.
Illuminated reticle does not light up	Battery is dead or incorrectly installed; illumination knob is off.	Check battery orientation and charge. Replace CR2032 battery if needed. Ensure illumination knob is set to a color and brightness level.

Problem	Possible Cause	Solution
Point of impact shifts (loss of zero)	Scope not securely mounted; loose mounting screws.	Ensure locking thumb bolts are tightened securely. Re-zero the scope.
Fogging inside the lens	Extreme temperature changes; seal compromise.	Allow scope to acclimate to temperature. If persistent, contact customer support.

SPECIFICATIONS

Brand	Pinty
Model	4x32 Tactical Rifle Scope
Magnification	4x
Objective Lens Diameter	32 mm
Material	Aircraft Grade 6061 Aluminum
Reticle Type	Crosshair (Simple Reticle)
Reticle Illumination	RGB (Red, Green, Blue)
Brightness Levels	3 per color
Eye Relief	Approx. 3 inches
Exit Pupil	0.3 inches
Field of View	36.6 ft. @ 100 yd.
Mounting Type	20mm Picatinny Mount
Weight	1 Pound (approx. 0.45 kg)
Battery Type	CR2032 (1 included)
Environmental Resistance	Waterproof, Fogproof, Shockproof

WARRANTY AND SUPPORT

Pinty products are manufactured to high-quality standards. For specific warranty details, please refer to the warranty card included with your purchase or visit the official Pinty website. If you encounter any issues or require technical assistance, please contact Pinty customer support through their official channels.

Website: [Pinty Official Store on Amazon](#)



