

## GNCC GT1PRO Black Caméra Surveillance

# GNCC 2K Outdoor Security Camera Instruction Manual

Model: GT1PRO Black Caméra Surveillance

### INTRODUCTION

This manual provides comprehensive instructions for the GNCC 2K Outdoor Security Camera (Model: GT1PRO Black Caméra Surveillance). It covers setup, operation, maintenance, and troubleshooting to ensure optimal performance and security for your home or business. The camera features 2K Ultra HD resolution, night vision, motion and sound detection, two-way audio, and is IP65 weatherproof for reliable outdoor use.



Image: The GNCC 2K Outdoor Security Camera, a black bullet-style camera with two antennas, shown with its packaging.

## What's in the Box

Verify that all components are present in your package:

- GNCC 2K Outdoor Security Camera
- Instruction Manual
- Stand
- Power Adapter
- Mounting Screws

## KEY FEATURES

- **2K Ultra HD & Night Vision:** Captures clear video in 2K resolution. Enhanced night vision provides visibility up to 50 feet (15 meters) in total darkness.
- **Smart AI Detection:** Provides real-time alerts for motion and sound. AI technology can identify people, pets, packages, and vehicles to reduce false alarms (subscription may be required for advanced AI features).
- **Wired Power & Secure Connectivity:** Operates on a reliable wired power supply and supports 2.4GHz WiFi for stable connection.
- **Local & Cloud Storage:** Supports Micro SD card storage up to 128GB (not included) and offers encrypted cloud storage with a 14-day free trial.
- **IP65 Weatherproof & Two-Way Audio:** Designed for outdoor use with IP65 waterproof protection, withstanding temperatures from -4°F to 120°F. Features a built-in microphone and speaker for real-time two-way communication.
- **Smart Home Integration:** Compatible with Amazon Alexa and Google Home for voice control and seamless integration into your smart home ecosystem.



Image: Visual representation of key features including 2K HDR, Siren, 2.4GHz WiFi, IP65, AI Detection, Night Vision, Motion Detection, Two-Way Audio, and Cloud/SD Storage.

## SETUP GUIDE

### 1. App Installation

Download the "Osaio" app from Google Play Store (for Android) or Apple App Store (for iOS). Register an account and log in.

# APP NOTIFY



Image: A smartphone screen displaying Osaio app notifications for motion and sound detection.

## 2. Powering the Camera

Connect the camera to a power source using the provided USB cable and power adapter. Ensure the power outlet is within reach of the camera's cable.

The camera is USB powered, allowing flexibility for indoor use by connecting to a laptop, computer, or any USB outlet. For outdoor installation, use the provided wall adapter.

Your browser does not support the video tag.

Video: A step-by-step guide demonstrating how to connect the GNCC security camera to the Osaio app using WiFi and AP modes.

### 3. Connecting to WiFi

The camera supports 2.4GHz WiFi only. Ensure your router is set to this frequency for connection.

1. Open the Osaio app and select "Add Camera".
2. Choose your preferred connection mode: QR code (recommended) or Hotspot (AP Mode).
3. Follow the on-screen instructions to connect the camera to your WiFi network. For QR code mode, present the generated QR code to the camera lens. For AP mode, connect your phone to the camera's hotspot.
4. Wait for the indicator light to confirm successful connection (usually turns white or green).



Image: Diagram illustrating connection options: Hotspot, Bluetooth+WiFi, and QR Code.

### 4. Mounting the Camera

Choose a suitable location for mounting, ensuring it is close to a power outlet and has good WiFi signal strength. The camera is IP65 weatherproof, suitable for outdoor installation.

1. Mark and drill holes for the mounting bracket.
2. Use the provided mounting screws to securely attach the bracket to the desired surface.
3. Screw the camera onto the mount and adjust its position for optimal viewing angle. Tighten the mount once the desired angle is achieved.
4. Use the included clips to secure the power wire along the mounting surface for a neat and secure installation.

Your browser does not support the video tag.

Video: A demonstration of mounting the GNCC 2K Outdoor Security Camera, including drilling holes, attaching the bracket, and securing the wire.



# MOTION DETECTION



Image: The GNCC outdoor camera mounted near a door, illustrating its motion detection capabilities.

## OPERATING THE CAMERA

### Live View & Recording

Access live video feed anytime, anywhere through the Osaio app. The camera supports 24/7 continuous recording when a Micro SD card is inserted (up to 128GB). Cloud storage options are also available.



Image: A smartphone displaying a timeline of recorded events from the outdoor camera, emphasizing 24/7 recording capability.

### **Motion & Sound Detection**

Receive instant real-time alerts on your phone when motion or sound is detected. The camera's AI-powered technology helps differentiate between people, pets, packages, and vehicles, reducing unnecessary notifications. You can also activate a built-in siren via the Osaio app to deter intruders.



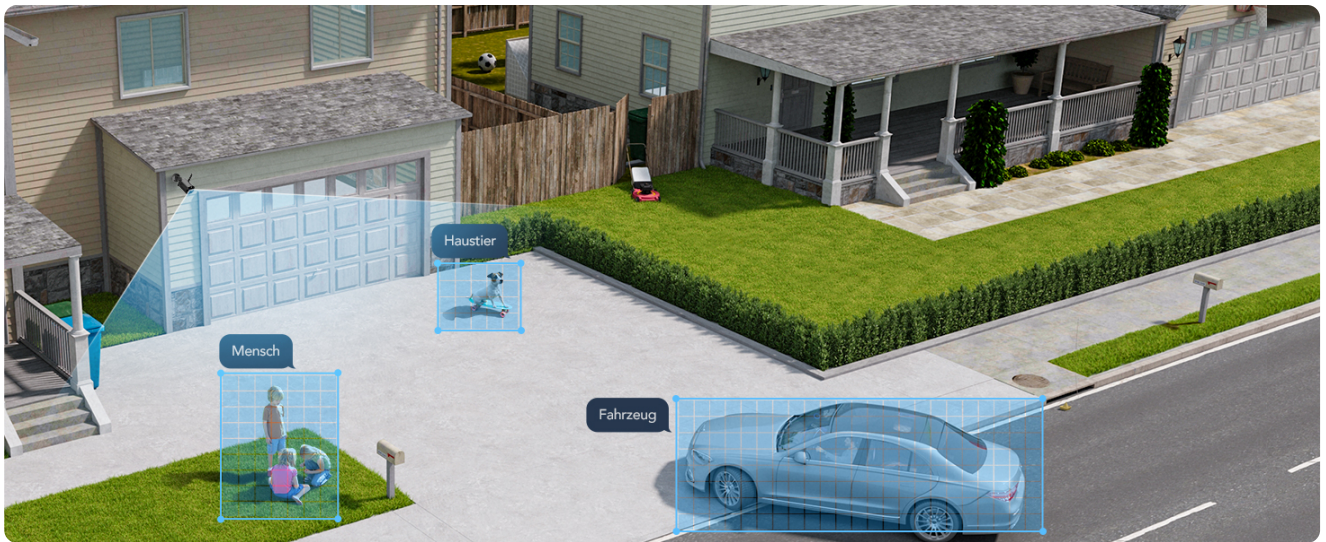


Image: An overhead view of a driveway showing the camera's ability to detect and categorize different objects like humans, pets, and vehicles.

## Two-Way Audio

Utilize the integrated microphone and speaker for clear two-way communication. This feature allows you to speak with visitors, delivery personnel, or deter unwanted guests directly through the app.



# 2-WAY AUDIO



Image: The GNCC camera with sound waves indicating two-way audio communication between a person and children playing.

## Night Vision

The camera provides enhanced night vision, allowing you to see clearly up to 50 feet (15 meters) even in complete darkness, ensuring round-the-clock surveillance.

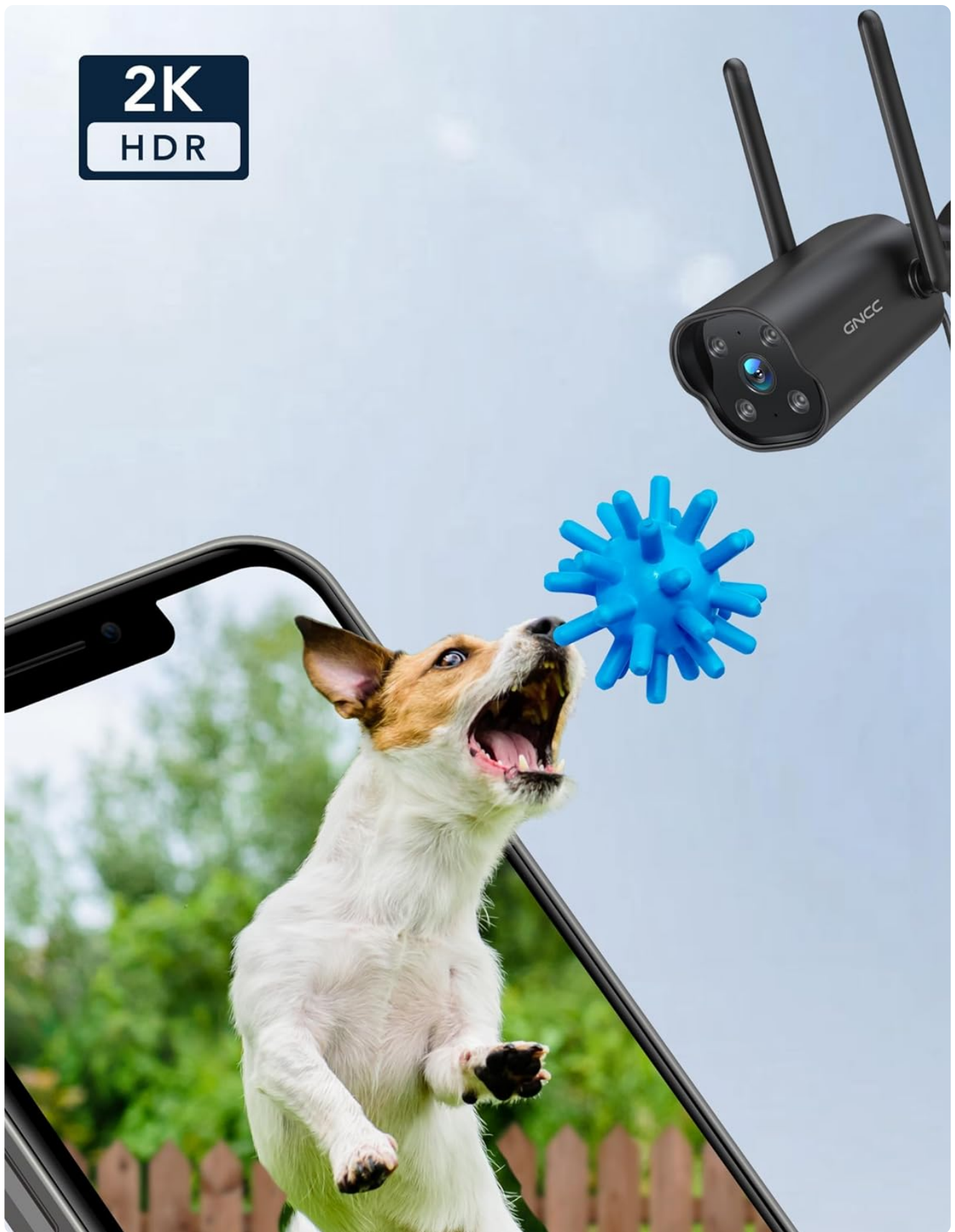


Image: A dog playing with a toy, with a "2K HDR" overlay, demonstrating the camera's high-resolution capabilities.

## MAINTENANCE

### Weather Resistance

The GNCC camera is IP65 weatherproof, designed to withstand various outdoor conditions including rain, wind, and extreme temperatures ranging from -4°F to 120°F (-20°C to 49°C).



Image: The GNCC camera with water droplets, highlighting its IP65 waterproof rating.

### Cleaning

To maintain optimal performance, periodically clean the camera lens and housing with a soft, damp cloth. Avoid using harsh chemicals or abrasive materials that could damage the camera's surface or lens.

TROUBLESHOOTING

- Connection Issues:** Ensure your WiFi network is 2.4GHz. Place the camera close to your router during initial setup. If connection fails, try resetting the camera and repeating the setup process.
- False Alarms:** Adjust the motion detection sensitivity settings within the Osaio app. Consider setting up specific detection zones to focus on critical areas and minimize unwanted alerts.
- No Recording:** Verify that a Micro SD card is properly inserted and formatted. If using cloud storage, ensure your subscription is active.
- Poor Night Vision:** Ensure the camera lens is clean and free from obstructions. Check for any strong light sources directly facing the camera at night, which could interfere with infrared illumination.

SPECIFICATIONS

Feature	Detail
Brand	GNCC
Model Name	GT1ProB
Video Capture Resolution	2K
Connectivity Technology	Wireless (2.4GHz Wi-Fi)
Indoor/Outdoor Usage	Indoor/Outdoor
Power Source	Corded Electric (5 Volts, 5 Watts)
Water Resistance Level	IP65 Weatherproof
Night Vision Range	50 Feet
Two-Way Audio	Yes
Motion/Sound Detection	Yes (Smart AI Detection)
Storage Options	Micro SD (up to 128GB), Cloud Storage
Smart Home Compatibility	Alexa, Google Home
Dimensions (L x W x H)	4.33 x 3.07 x 2.09 inches
Item Weight	7.4 ounces (210 Grams)

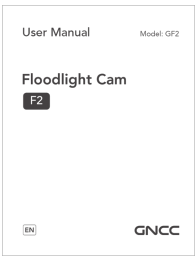





## WARRANTY & SUPPORT

For any questions or support needs, please contact GNCC customer service at[support@gncchome.com](mailto:support@gncchome.com).

© 2024 GNCC. All rights reserved.

### Related Documents - GT1PRO Black Caméra Surveillance

	<p><a href="#">GNCC GF2 Floodlight Cam User Manual: Installation, App Setup, and Troubleshooting Guide</a></p> <p>This user manual provides comprehensive instructions for installing, setting up, and using the GNCC GF2 Floodlight Cam. It covers hardware installation, the WowCam app, device features, and common troubleshooting tips for home security and smart lighting.</p>
	<p><a href="#">GNCC Indoor Camera C2 User Guide</a></p> <p>User guide for the GNCC Indoor Camera C2, covering setup, features like crystal clear video, night vision, two-way audio, motion/sound detection, and cloud/SD card storage. Includes instructions on managing device settings, sharing the camera, and troubleshooting tips.</p>
	<p><a href="#">GNCC T1 Pro Outdoor Security Camera User Manual</a></p> <p>A comprehensive guide to the GNCC T1 Pro 2K Security Camera, covering setup, features, and app integration for home security.</p>
	<p><a href="#">GNCC P1 Indoor Camera User Guide</a></p> <p>Comprehensive user guide for the GNCC P1 Indoor Camera, covering setup, features, device controls, settings, and troubleshooting tips for optimal home security.</p>



[GNCC K1 Pro 2K Outdoor WiFi Security Camera User Manual](#)

User manual for the GNCC K1 Pro 2K outdoor WiFi security camera. Learn about installation, app setup, features like auto-tracking and color night vision, troubleshooting, and technical specifications for home surveillance.



[GNCC GT1 Pro Outdoor Cam User Manual & Setup Guide](#)

Comprehensive user manual and setup guide for the GNCC GT1 Pro Outdoor Cam. Learn about installation, configuration, features, motion detection, storage, and more.