

## LANDY 1/2 Yard Cement & Concrete Bucket with Spout

# Landy Industries Skid Steer 1/2 Yard Cement & Concrete Bucket with Spout User Manual

Model: 1/2 Yard Cement & Concrete Bucket with Spout

## INTRODUCTION

This manual provides essential information for the safe and effective operation, maintenance, and troubleshooting of your Landy Industries Skid Steer 1/2 Yard Cement & Concrete Bucket with Spout. Please read this manual thoroughly before using the equipment.

The Landy Industries Skid Steer 1/2 Yard Cement & Concrete Bucket is designed to efficiently transport and pour concrete, significantly reducing manual labor associated with tasks like pouring sidewalks, driveways, and other concrete jobs. Its design allows for easy cleaning, storage, and loading, making it a versatile attachment for your skid steer.

## SAFETY INFORMATION

Always prioritize safety when operating heavy machinery and attachments. Failure to follow safety instructions can result in serious injury or death.

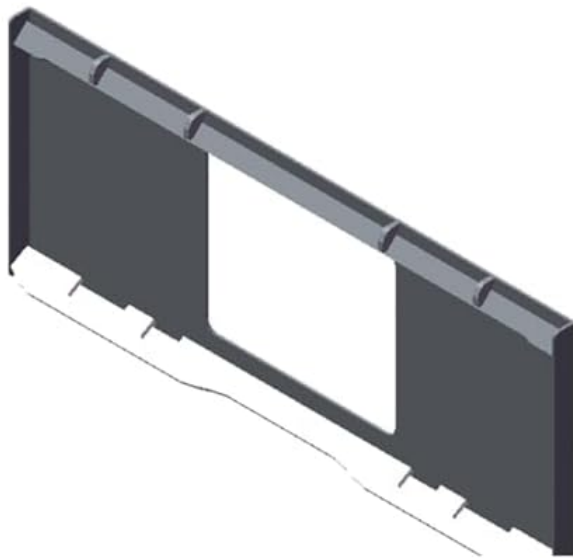
- Ensure the skid steer is stable and on level ground before attaching or detaching the bucket.
- Always wear appropriate personal protective equipment (PPE), including hard hat, safety glasses, and steel-toed boots.
- Do not exceed the rated capacity of the bucket or the skid steer. The bucket has a capacity of 1/2 yard of concrete.
- Keep all bystanders clear of the work area during operation.
- Inspect the bucket and all attachment points for damage or wear before each use.
- Never operate the equipment under the influence of drugs or alcohol.
- Refer to your skid steer's operator manual for additional safety guidelines.

## SETUP AND INSTALLATION

---

Proper installation is crucial for safe and efficient operation.

1. **Verify Compatibility:** Before installation, ensure your skid steer's quick attach system is compatible with the bucket's mount plate. Refer to the provided size diagram for the mount plate dimensions.
2. **Position the Skid Steer:** Park the skid steer on a flat, stable surface. Engage the parking brake and lower the loader arms.
3. **Align the Bucket:** Carefully approach the bucket with the skid steer's quick attach plate. Align the top edge of the quick attach plate with the top hooks on the bucket.
4. **Lift and Tilt:** Slowly raise the loader arms and tilt the quick attach plate backward until the bucket is fully seated against the plate.
5. **Secure the Pins:** Engage the locking pins or levers on your skid steer's quick attach system to secure the bucket. Ensure both pins are fully engaged and locked.
6. **Final Check:** Gently lift the bucket a few inches off the ground and shake it to confirm it is securely attached before beginning operation.



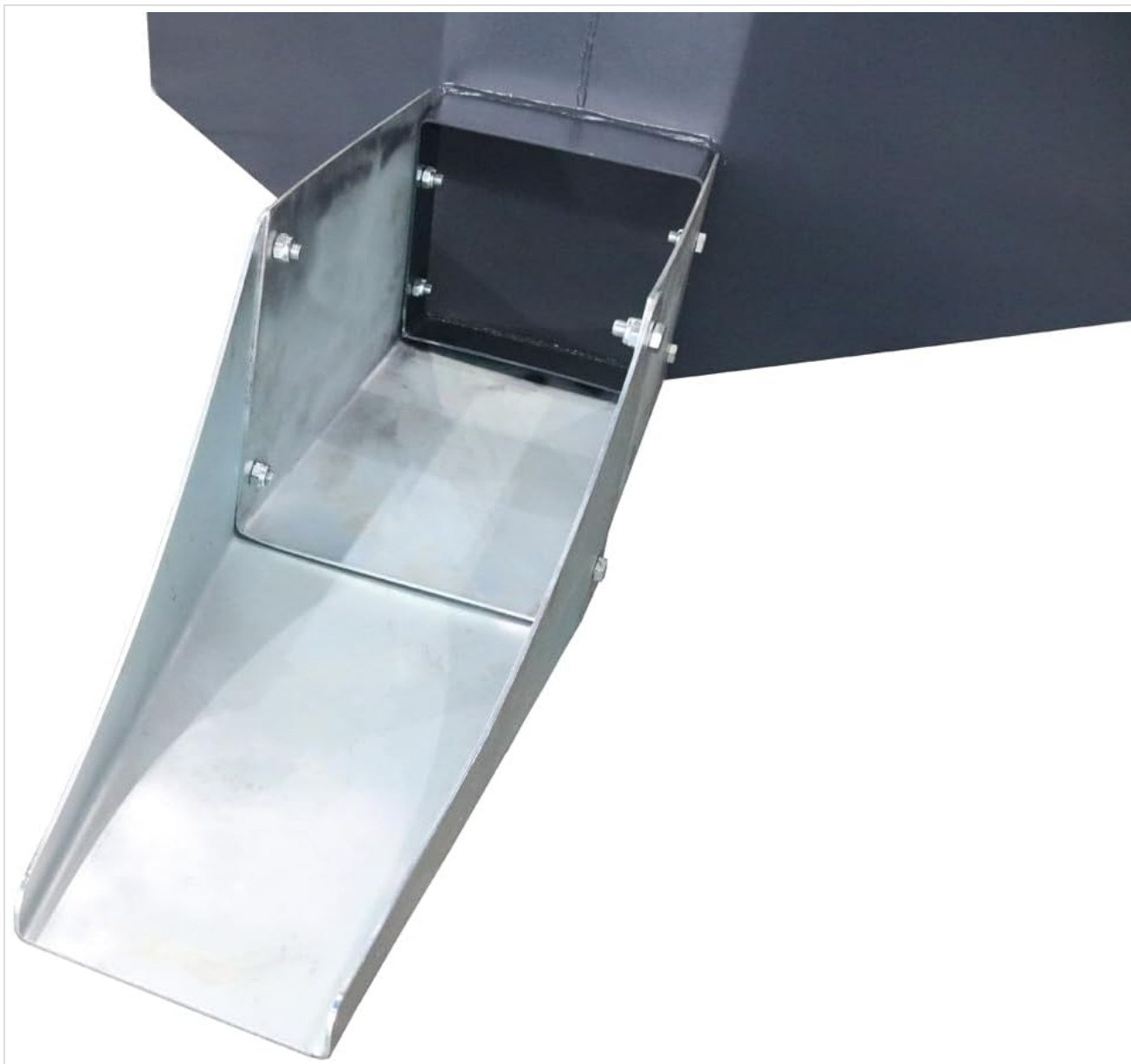
whether the product is compatible with  
your machine before purchasing!

1. **Loading Concrete:** Position the bucket to receive concrete from a mixer or pump. Ensure the bucket is level to prevent spillage. The bucket can haul up to 1/2 yard of concrete.
2. **Transporting:** With the bucket loaded, raise it to a safe transport height, typically just above the ground. Drive slowly and smoothly to the pouring location, avoiding sudden stops or turns that could cause concrete to slosh out.

3. **Pouring:** Position the bucket over the area where concrete is to be poured. Use the skid steer's tilt function to control the flow of concrete through the spout. The spout allows for precise placement, especially in tight areas, eliminating the need for a wheelbarrow and reducing back-breaking manual labor.
4. **Emptying:** Ensure the bucket is completely emptied after each pour to prevent concrete from hardening inside.



**Figure 2:** Front view of the concrete bucket, showing the main body and the attached pouring spout. This view highlights the robust construction and the design optimized for concrete flow.



**Figure 3:** Detailed view of the concrete pouring spout. The spout is designed for controlled and precise delivery of concrete, making it ideal for various pouring applications.

## MAINTENANCE

---

Regular maintenance ensures the longevity and optimal performance of your concrete bucket.

- **Cleaning:** Immediately after each use, thoroughly clean the bucket and spout to remove all concrete residue. Hardened concrete is difficult to remove and can reduce the bucket's capacity and efficiency. Use water and a stiff brush or pressure washer.
- **Inspection:** Periodically inspect the bucket for signs of wear, cracks, or damage, especially at weld points and attachment areas. Check all bolts and fasteners for tightness.
- **Storage:** Store the bucket in a dry, covered area to prevent rust and corrosion when not in use.
- **Lubrication:** If any moving parts or pivot points are present (though less common on a simple bucket), lubricate them according to standard machinery maintenance practices.



**Figure 4:** Interior view of the concrete bucket. Regular cleaning of this interior surface is vital to prevent concrete buildup and maintain the bucket's capacity and ease of use.

## TROUBLESHOOTING

Problem	Possible Cause	Solution
Concrete not flowing smoothly from spout.	Concrete too dry or stiff; partial blockage in spout; bucket not tilted enough.	Add water to concrete mix (if permissible); clear any obstructions from spout; increase bucket tilt angle.
Bucket not securely attaching to skid steer.	Incorrect alignment; quick attach pins not fully engaged; damaged quick attach system on skid steer or bucket.	Re-align bucket and quick attach plate; ensure pins are fully locked; inspect quick attach system for damage and repair if necessary.
Excessive spillage during transport.	Bucket overloaded; driving too fast or making sudden movements; concrete mix too wet.	Reduce load to 1/2 yard capacity; drive slower and smoother; adjust concrete mix consistency.

## SPECIFICATIONS

Feature	Detail
Brand	LANDY
Model	1/2 Yard Cement & Concrete Bucket with Spout
Material	Alloy Steel
Color	Black
Capacity	0.5 Cubic Yards
Handle Material	Alloy Steel (refers to spout mechanism, if applicable)
Shape	Rectangular (main bucket body)
Special Feature	Integrated Pouring Spout

## WARRANTY AND SUPPORT

For warranty information, technical support, or to inquire about replacement parts, please contact Landy Industries directly. Refer to the product packaging or the official Landy Industries website for the most current contact details.


**Manufacturer:** Landy Industries





**Date First Available:** August 11, 2023

For further assistance, you may visit the [Landy Industries Store on Amazon](#).

© 2023 Landy Industries. All rights reserved.

### Related Documents - 1/2 Yard Cement & Concrete Bucket with Spout

	<p><a href="#">Landy S-BC Concrete Mixer Bucket Operator Manual</a></p> <p>Operator manual for the Landy S-BC Concrete Mixer Bucket, covering purpose, safety precautions, parts identification, usage, operation, and maintenance instructions.</p>
---	--

 <p>LANDY INDUSTRIES OPERATOR MANUAL SKID STEER AUGER MODEL: S-AG23</p>	<p><a href="#">Landy Skid Steer Auger Operator Manual - Model S-AG23</a></p> <p>Comprehensive operator manual for the Landy Skid Steer Auger, model S-AG23. Covers safety precautions, operating instructions, attachment, detachment, and maintenance procedures for professional use.</p>
 <p>LANDY INDUSTRIES OPERATOR MANUAL Mini Skid Steer Trencher</p>	<p><a href="#">Landy Mini Skid Steer Trencher Operator Manual</a></p> <p>Comprehensive operator manual for the Landy Mini Skid Steer Trencher, detailing its purpose, safety guidelines, parts list, operation procedures, and maintenance schedule.</p>
 <p>LANDY INDUSTRIES OPERATOR MANUAL Rock Bucket with Grapple MODEL: S-08305G</p>	<p><a href="#">LANDY S-08305G Rock Bucket with Grapple Operator Manual</a></p> <p>Operator manual for the LANDY S-08305G Rock Bucket with Grapple. Provides instructions on purpose of use, safety precautions, parts identification, attachment, operation, detachment, and maintenance for heavy equipment.</p>
 <p>Owner's/Operator's Manual</p> <p>CAEL CAPITAL AUTOMOTIVE EQUIPMENT LIMITED</p>	<p><a href="#">CAEL 72" Skid Steer Rock Grapple Bucket Owner's/Operator's Manual</a></p> <p>Comprehensive owner's and operator's manual for the CAEL 72" Skid Steer Rock Grapple Bucket. This guide covers essential safety information, operating procedures, maintenance schedules, and product specifications provided by Capital Automotive Equipment Limited.</p>