

WOOLLEY BSD29

WOOLLEY WiFi Smart Plug User Manual

Model: BSD29

1. INTRODUCTION

The WOOLLEY WiFi Smart Plug (Model: BSD29) is designed to transform your home appliances into smart devices, offering convenience and energy management. This smart plug integrates seamlessly with your 2.4 GHz Wi-Fi network, allowing for remote control, voice commands, power monitoring, and smart scheduling through the eWelink application.

Smart Your Life

WOOLLEY WiFi Smart plug

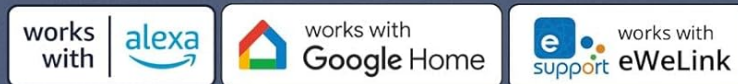


Image: The WOOLLEY WiFi Smart Plug, highlighting compatibility with Alexa, Google Home, and eWeLink.



2. SAFETY INFORMATION

Please read and understand all safety instructions before using the device. Failure to follow these instructions may result in electric shock, fire, or serious injury.

- Do not exceed the maximum load of 13 Amps.
- Use only indoors in dry locations.
- Do not disassemble or modify the device.
- Keep out of reach of children.
- Ensure the plug is fully inserted into the socket.
- Unplug the device from the power outlet before cleaning.



Image: The smart plug features overload protection, safeguarding against excessive power, voltage, and current.

3. SETUP GUIDE

3.1 Package Contents

Verify that all components are present in the package:

- WOOLLEY WiFi Smart Plug (BSD29)
- User Manual



Image: Four WOOLLEY Smart Plugs shown in their retail packaging.

3.2 App Installation and Device Pairing

To begin using your smart plug, you need to download the eWelink app and pair the device. The smart plug operates on a 2.4 GHz Wi-Fi network and does not require a separate hub.

Add Device to the eWeLink APP

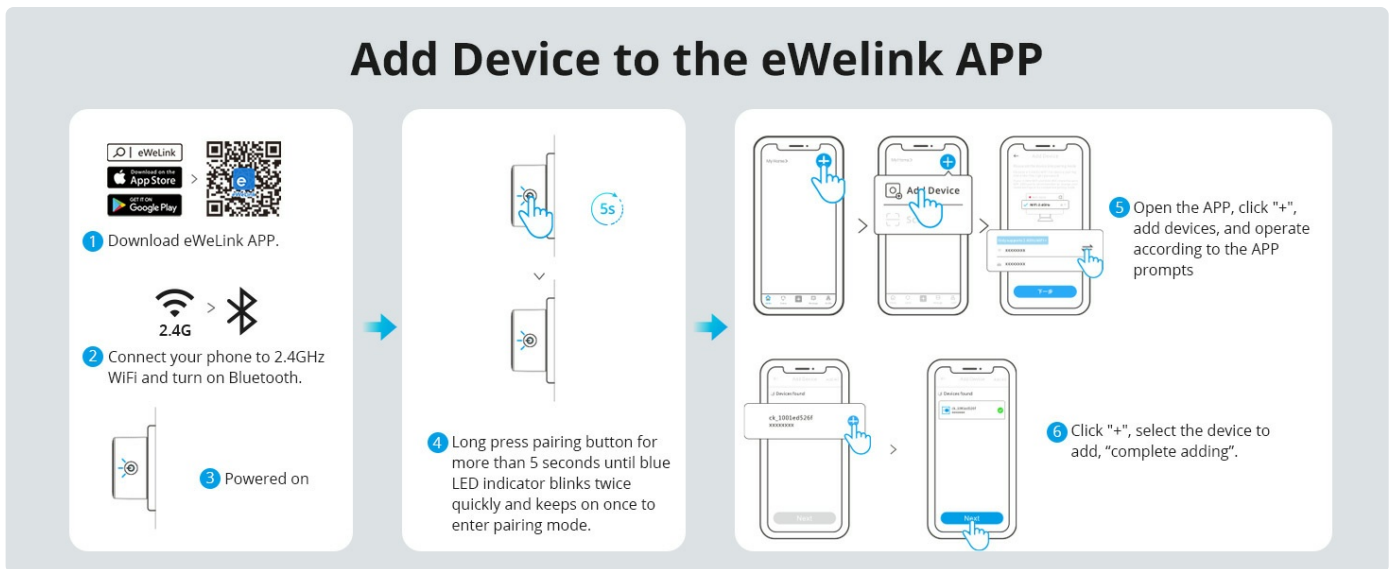


Image: A visual guide demonstrating the steps to add the smart plug to the eWeLink application.

- 1. Download eWeLink App:** Scan the QR code or visit <http://app.coolkit.cc/dl.html> to download the eWeLink app from the App Store or Google Play.
- 2. Network Connection:** Ensure your phone is connected to a 2.4 GHz Wi-Fi network and Bluetooth is enabled. (5 GHz networks are not supported).
- 3. Power On:** Plug the WOOLLEY Smart Plug into a power outlet.
- 4. Enter Pairing Mode:** Long press the pairing button on the smart plug for more than 5 seconds until the blue LED indicator blinks twice quickly and keeps on once to enter pairing mode.
- 5. Add Device in App:** Open the eWeLink app, tap the "+" icon to add devices, and follow the on-screen prompts.
- 6. Complete Adding:** Select the device to add and complete the pairing process.

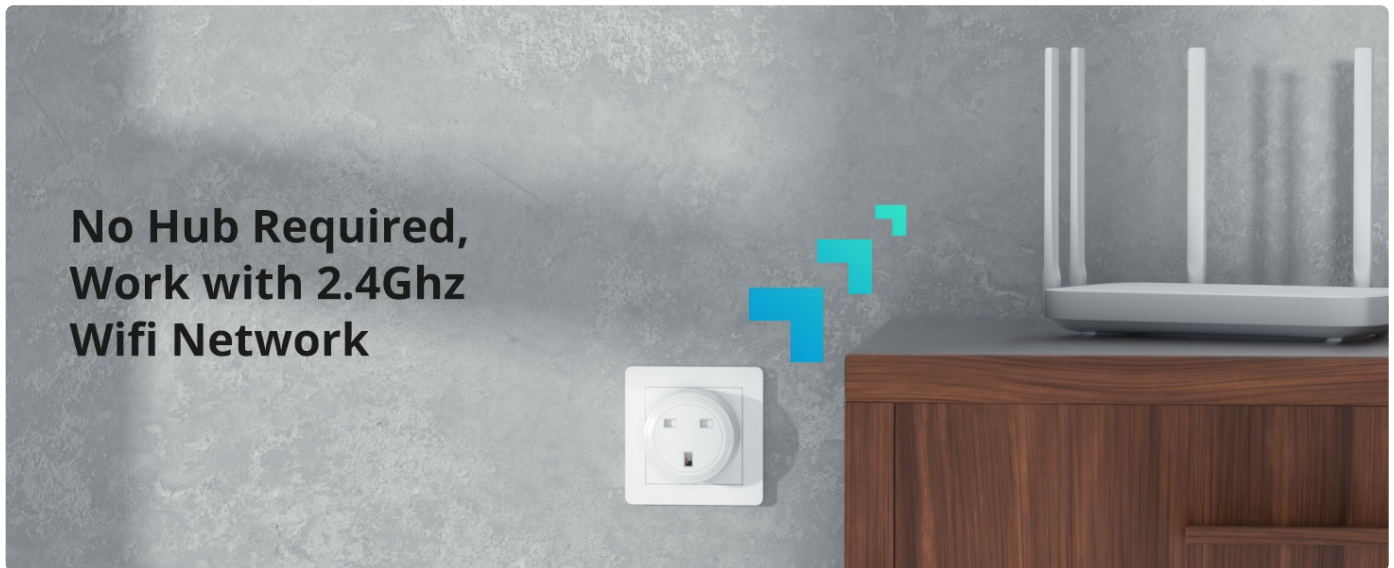


Image: The smart plug connects directly to your 2.4 GHz Wi-Fi network, eliminating the need for a separate hub.

4. OPERATING INSTRUCTIONS

4.1 Remote Control

Control your connected appliances from anywhere using the eWeLink app on your smartphone or tablet.



Image: A user demonstrating remote control of a lamp via the eWelink app, highlighting the convenience of managing devices from any location.

4.2 Voice Control

The WOOLLEY Smart Plug is compatible with Amazon Alexa and Google Home. Link your eWelink account to your voice assistant app to enable voice commands.

- **For Alexa:** "Alexa, turn on [device name]."
- **For Google Home:** "Hey Google, turn off [device name]."

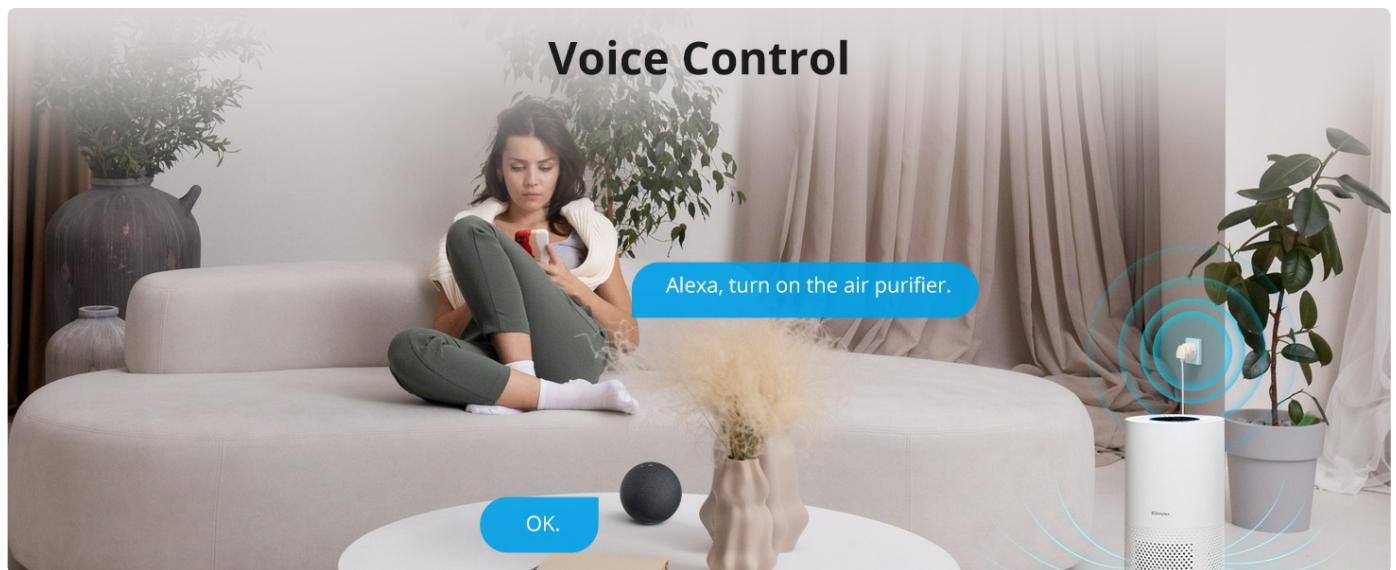


Image: A user interacting with a smart speaker to control an air purifier connected to the smart plug using voice commands.

4.3 Power Monitoring

Monitor the power consumption of connected devices in real-time and view historical data within the eWelink app. You can also set power fees to calculate appliance spending.

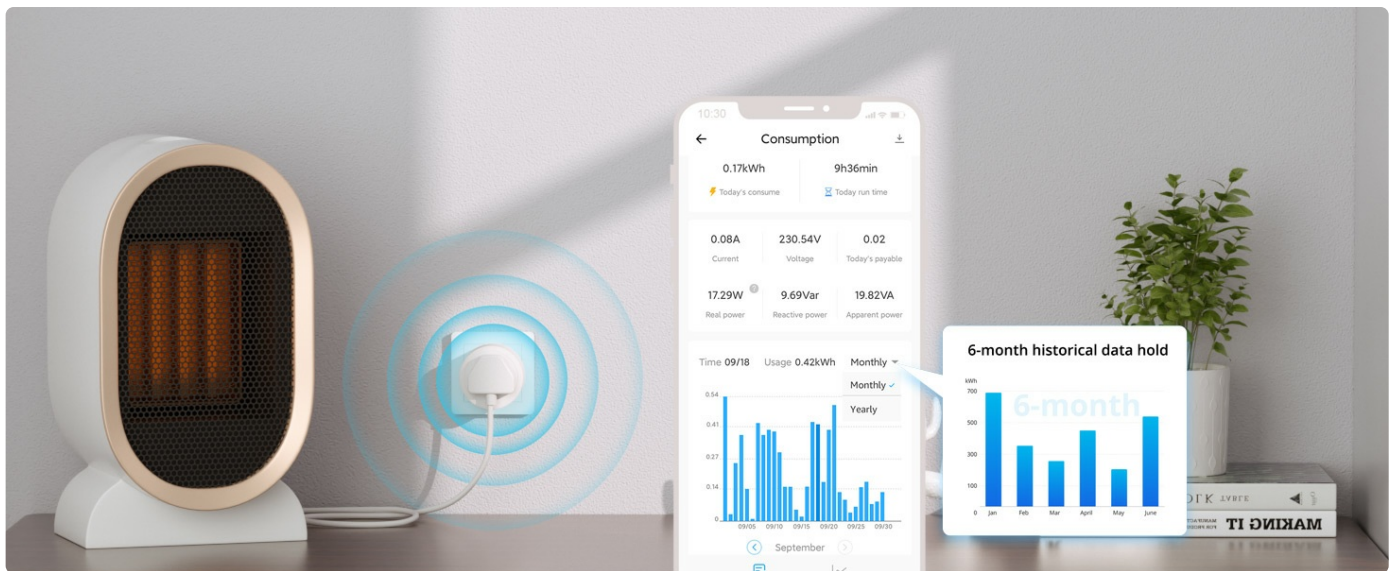


Image: A smartphone screen showing detailed power consumption graphs and data for a device connected to the smart plug, including 6-month historical data.

4.4 Smart Scheduling and Timer

Set schedules and timers for your appliances to turn on or off automatically. This feature helps automate your daily routines and save energy.



Image: An illustration of the smart scheduling feature, showing an essential oil diffuser set to turn on at 22:00 and a lamp to turn off at 08:10.

4.5 Smart Scene Creation

Integrate your smart plug into smart scenes with other eWelink compatible devices (e.g., sensors) to create automated actions based on specific conditions.



Image: A smart scene example where the smart plug automatically turns on a humidifier when the humidity level drops below 40%, demonstrating integration with other smart devices.

4.6 Device Sharing

Share control of your smart plugs with family members or trusted individuals through the eWelink app, allowing multiple users to manage devices.



Image: Multiple users sharing control of smart devices through the eWelink app, illustrating the device sharing feature.

4.7 Advanced App Settings

- **Location Management:** Assign specific locations (e.g., Kitchen, Bedroom) to your smart plugs for easier organization and control.

Location Management

Assign location According to the plug location

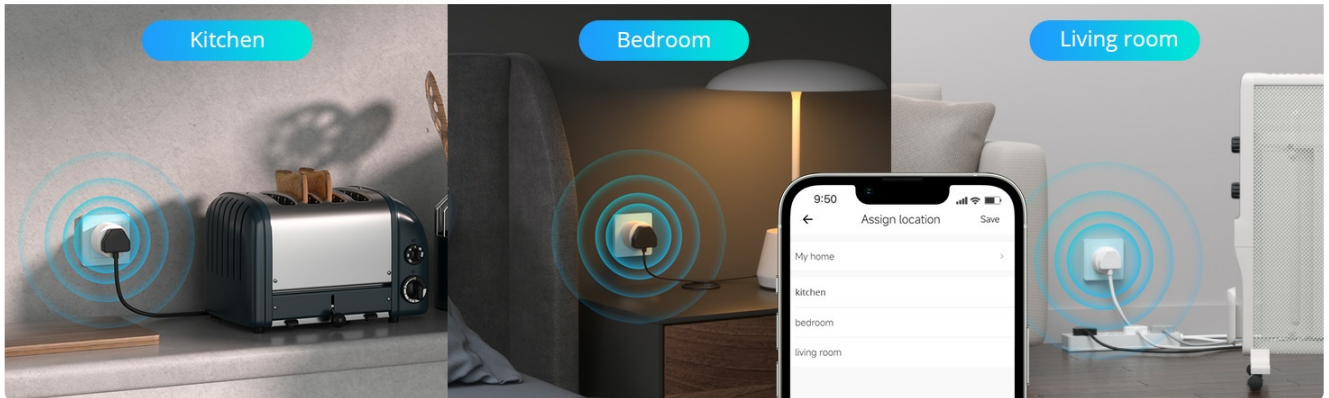


Image: The eWelink app interface showing how to assign locations to smart plugs for better organization.

- **Inching Mode:** Set a temporary ON/OFF state for a specified duration (up to 3600 seconds).

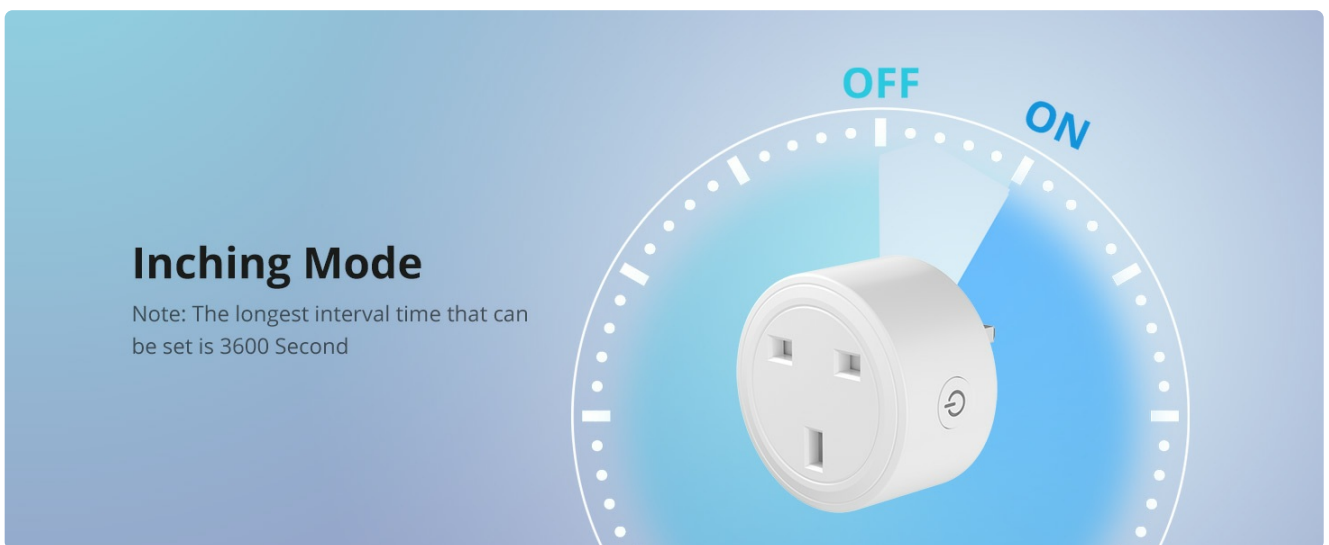


Image: An illustration of the Inching Mode feature, allowing the smart plug to turn on or off for a set duration, up to 3600 seconds.

- **Operation Logs:** View a history of all device operations and triggers within the app.

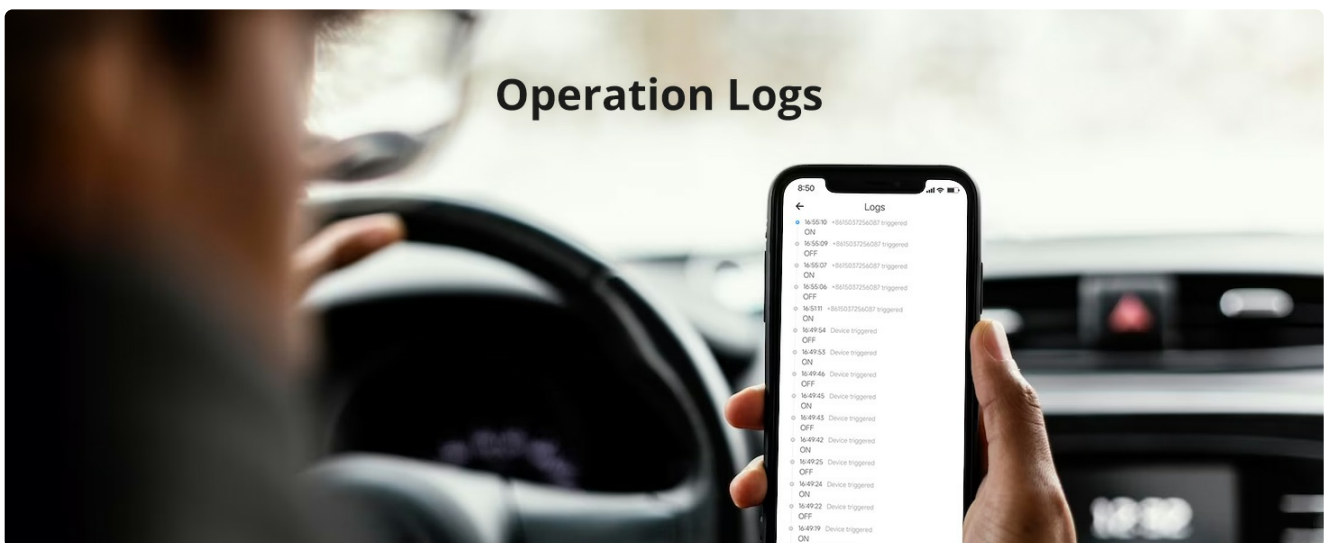


Image: A smartphone screen displaying the operation logs, providing a detailed history of smart plug activities.

- **Network Indicator Control:** Toggle the LED network indicator light on the plug via the app settings.

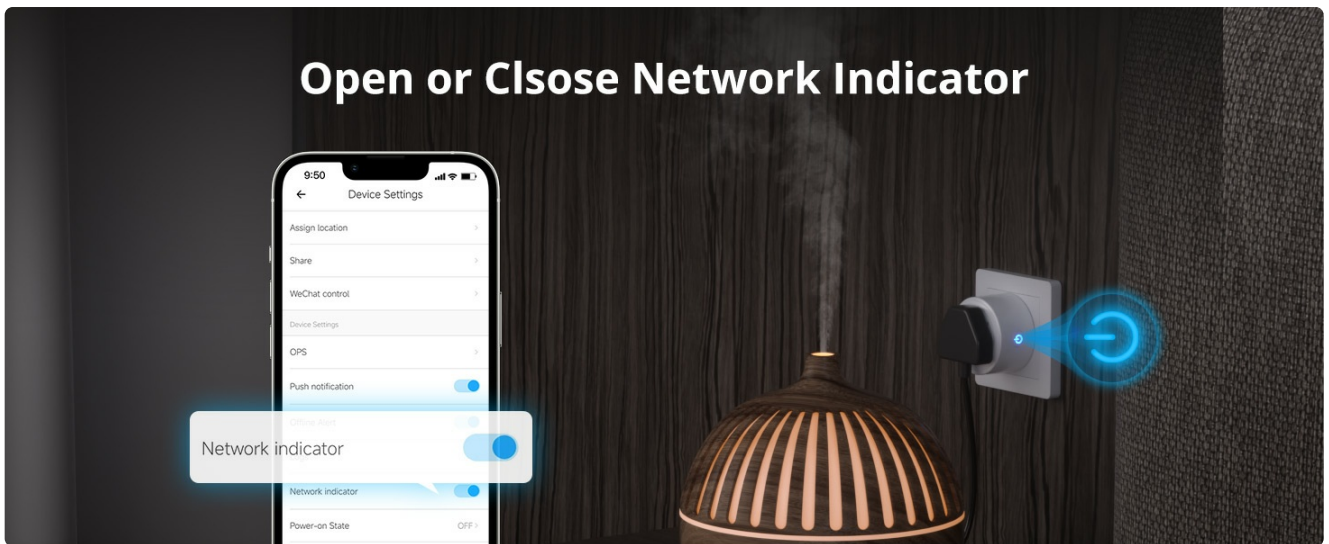


Image: The eWelink app setting that allows users to enable or disable the network indicator light on the smart plug.

- **Power-on State Setting:** Configure the smart plug's state (ON, OFF, Last State) after a power outage.

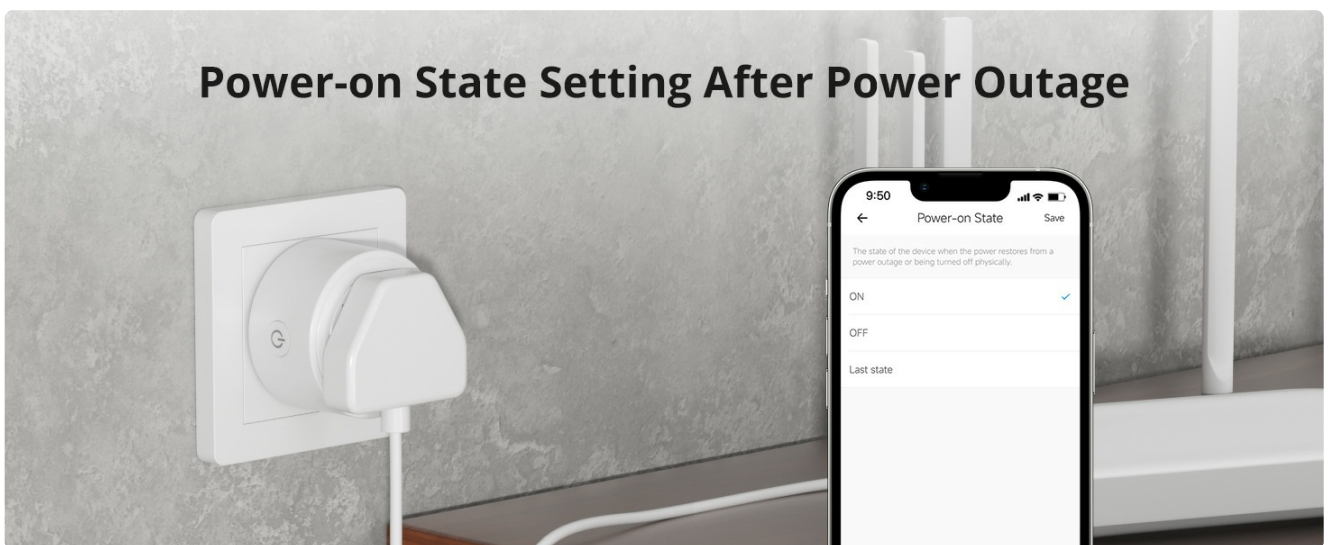


Image: The eWelink app setting to define the smart plug's behavior (ON, OFF, or last state) after a power interruption.

- **Push Notifications:** Receive notifications on your phone when the device status changes (e.g., Smart Plug ON/OFF).

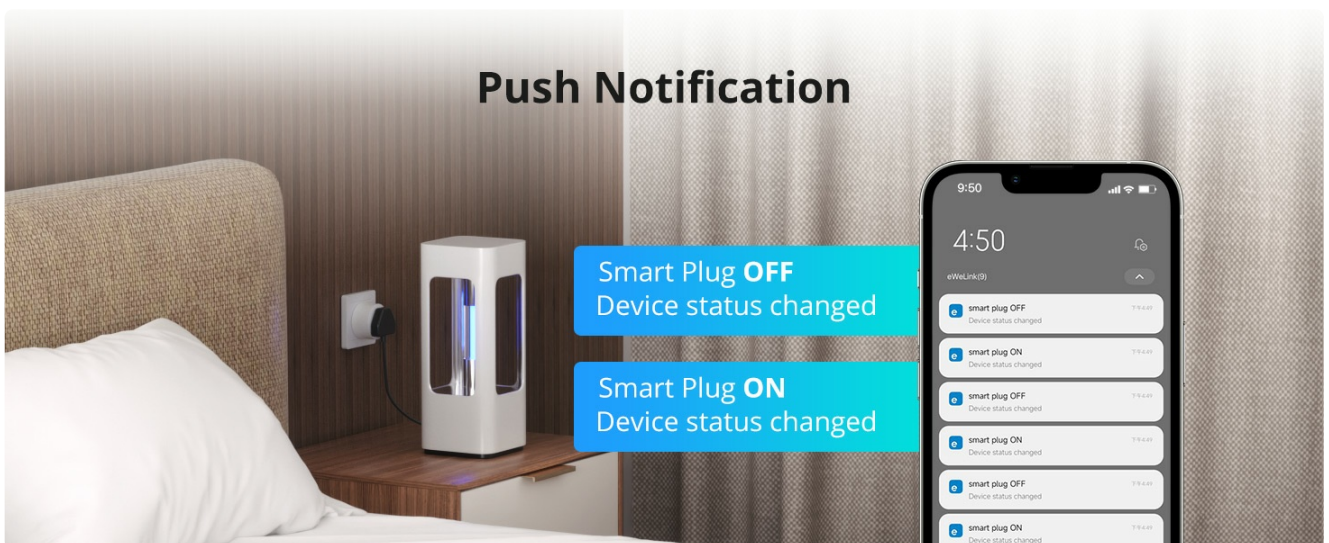


Image: A smartphone displaying push notifications indicating changes in the smart plug's status, such as turning ON or OFF.

5. MAINTENANCE

The WOOLLEY WiFi Smart Plug requires minimal maintenance. Follow these guidelines to ensure optimal performance and longevity:

- **Cleaning:** Disconnect the smart plug from the power outlet before cleaning. Use a soft, dry cloth to wipe the surface. Do not use liquid cleaners or aerosols.
- **Storage:** If not in use for an extended period, store the smart plug in a cool, dry place away from direct sunlight and moisture.
- **Firmware Updates:** Periodically check the eWelink app for available firmware updates to ensure your device has the latest features and security enhancements.

6. TROUBLESHOOTING

Problem	Possible Cause	Solution
Device cannot connect to Wi-Fi.	Incorrect Wi-Fi password; 5 GHz network used; too far from router; network interference.	Ensure correct 2.4 GHz Wi-Fi password. Connect to a 2.4 GHz network (5 GHz is not supported). Move the smart plug closer to the router. Reduce interference from other devices.
Voice control not working.	eWelink account not linked to Alexa/Google Home; incorrect device name; internet connectivity issues.	Ensure eWelink account is correctly linked in your Alexa/Google Home app. Verify the device name used in voice commands matches the app. Check internet connection.
Smart plug is unresponsive.	No power; device frozen; app issue.	Check if the power outlet is working. Unplug and re-plug the smart plug. Restart the eWelink app. If issues persist, try resetting the smart plug to factory settings (refer to pairing instructions).
Power monitoring data is inaccurate.	Incorrect power fees rate set in app; temporary sensor anomaly.	Verify the power fees rate setting in the eWelink app. Restart the app or the smart plug.

7. SPECIFICATIONS

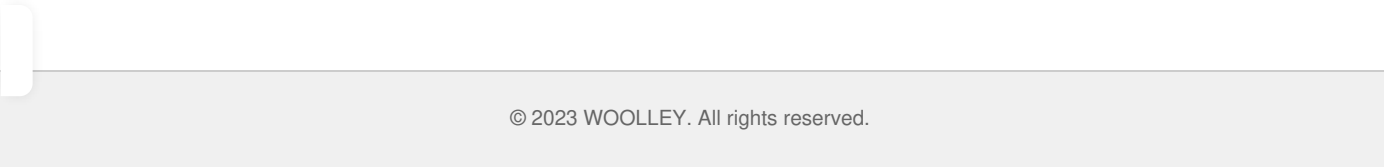
Feature	Detail
Model Number	BSD29
Brand	WOOLLEY
Maximum Load	13 Amps
Wireless Connectivity	Wi-Fi 2.4 GHz (IEEE 802.11 b/g/n)
App Compatibility	eWelink App
Voice Assistant Compatibility	Amazon Alexa, Google Home
Power Monitoring	Yes
Overload Protection	Yes

Feature	Detail
Item Weight	314 g
Package Dimensions	12 x 12 x 6 cm

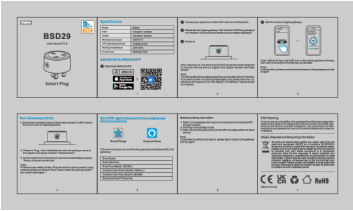
8. WARRANTY AND SUPPORT

For warranty information and technical support, please refer to the WOOLLEY official website or contact their customer service directly. Keep your purchase receipt for warranty claims.

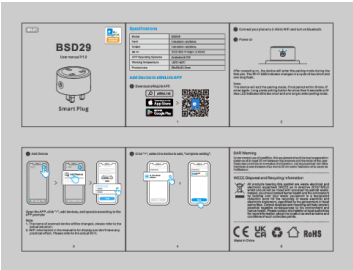
Manufacturer: WOOLLEY
Part Number: BU87D059275
Date First Available: 11 August 2023
Barcode/UPC (from image): 9888016100010



Documents - WOOLLEY – BSD29



[BSD29 Zigbee Smart Plug User Manual | Setup and Pairing Guide](#)
Comprehensive user manual for the BSD29 Zigbee Smart Plug. Learn how to set up, pair with eWeLink and Amazon Alexa, and understand specifications and safety information.
lang: score:14 filesize: 1.2 M page_count: 1 document date: 2023-07-20



[WOOLLEY BSD29 Wi-Fi Smart Plug: Setup, Specifications, and User Guide](#)
Comprehensive user manual for the WOOLLEY BSD29 Wi-Fi Smart Plug. Includes detailed specifications, step-by-step setup instructions using the eWeLink app, and important safety and compliance information.
lang: score:14 filesize: 1013.88 K page_count: 1 document date: 2023-07-20