

Manuals+

[Q & A](#) | [Deep Search](#) | [Upload](#)

Manuals.plus /

> [MAMNV](#) /

> MAMNV Robot Vacuum and Mop Combo BR151 User Manual

MAMNV BR151

MAMNV Robot Vacuum and Mop Combo BR151 User Manual

Brand: MAMNV | Model: BR151

1. SAFETY INFORMATION

Please read all safety instructions carefully before using this appliance. Keep this manual for future reference.

- This appliance is for indoor use only. Do not use outdoors or on commercial surfaces.
- Do not allow children or pets to play with the appliance. Supervise children when the appliance is in use.
- Remove all loose cables, small objects, rugs, or curtains from the cleaning path to prevent entanglement.
- Do not use the appliance to pick up large debris, liquids, burning or smoking materials, or sharp objects.
- Ensure the charging dock is placed against a wall on a level surface, away from water sources.
- Do not use the appliance in areas with open flames or flammable materials.
- Always turn off the appliance and unplug the charging dock before cleaning or maintenance.

2. WHAT'S IN THE BOX

Verify that all components are present upon unboxing:

- 1x MAMNV Robot Vacuum and Mop Combo BR151
- 1x Charging Dock
- 1x Remote Control
- 1x User Manual
- 1x FQA (Frequently Asked Questions) Guide
- 1x Networking Guide
- 1x Watertank (with Washable Mopping Cloth)
- 1x Charging Adapter

- 2x Side Brushes



Main product image of the MAMNV Robot Vacuum and Mop Combo BR151.

3. SETUP GUIDE

3.1 Charging Dock Placement

Place the charging dock against a wall in an open area, ensuring there is at least 0.5 meters (1.6 feet) of clear space on both sides and 1.5 meters (4.9 feet) in front of the dock. Plug the charging adapter into a power outlet.



The robot vacuum automatically returns to its charging base when the battery is low or cleaning is complete.

3.2 Initial Charging

Place the robot vacuum on the charging dock. The indicator light will flash green during normal charging. Allow the robot to fully charge before its first use.

3.3 Side Brush Installation

Attach the two side brushes to the designated slots on the underside of the robot by pressing them down until they click into place.

3.4 Water Tank and Mopping Cloth Attachment

Fill the water tank with clean water. Attach the washable mopping cloth to the bottom of the water tank. Slide the water tank assembly into the back of the robot until it clicks securely.



The 2-in-1 mopping system includes a 230ml electric control water tank and a 200ml dustbin with a high-efficiency filter.

3.5 App and Voice Control Setup

Download the Tuya Smart app from your smartphone's app store. Follow the in-app instructions to connect your robot vacuum to your home's 2.4GHz Wi-Fi network. Once connected, you can link the app to Google Assistant for voice commands.



Control the robot vacuum using the Tuya Smart app, compatible with Amazon Alexa and Google Assistant (2.4GHz Wi-Fi only).

4. OPERATING INSTRUCTIONS

4.1 Cleaning Modes

The robot offers four high-efficiency cleaning modes, selectable via the remote control or the Tuya Smart app:

- **Auto Cleaning:** The robot automatically cleans the entire area.
- **Spot Cleaning:** Focuses on a specific dirty area for intensive cleaning.
- **Edge Cleaning:** Cleans along walls and furniture edges.
- **Zig-zag Cleaning:** Cleans in a systematic zigzag pattern, covering a large area efficiently.



The robot vacuum offers multiple cleaning modes to suit different needs, covering up to 1920 sqft in 100 minutes.

4.2 App and Voice Control

Use the Tuya Smart app to set cleaning schedules, adjust cleaning modes, control directions, and check error reasons. Voice commands are supported via Google Assistant to start and stop cleaning.



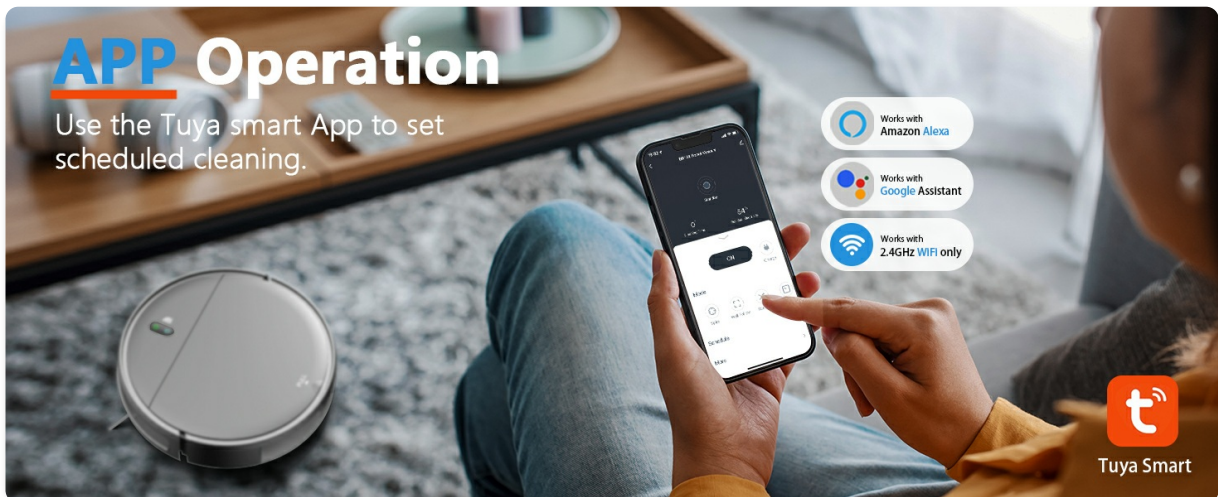
Remote Control

Easy to use, the elders of the family can also easily use.

The remote control provides an easy-to-use alternative for operating the robot vacuum.

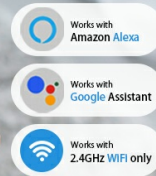
4.3 Obstacle Avoidance

The robot features advanced 3D precise obstacle avoidance with a full set of sensors to intelligently identify and avoid white walls, stairs, and other obstacles. Its slim 2.87-inch design allows it to clean under furniture and in narrow spaces.



APP Operation

Use the Tuya smart App to set scheduled cleaning.



The slim and quiet design helps solve hidden dust issues throughout the house.

4.4 Mopping Function

The 2-in-1 design allows for simultaneous vacuuming and mopping. The 230ml electric control water tank provides 2 levels of water flow to keep the washable mopping cloth damp for effective wet mopping on hard floors.

Strong Suction

Suitable for various flooring types, clean every corner of the house.



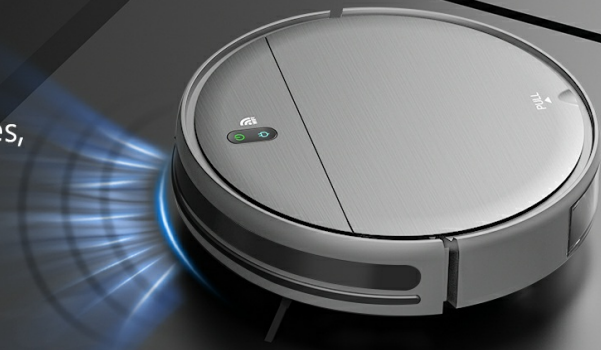
100 mins
Runtime



Self-
Charging



2300Pa
Suction



2300PA

The 2-in-1 mopping robot vacuum is ideal for hard floors with its 230ml large water tank and 2 levels of water flow.

4.5 Self-Recharge

With a 2500mAh battery, the robot can operate continuously for 100 minutes in a 1290 sqft house. When the battery is low or cleaning is finished, it automatically returns to the charging base.

5. MAINTENANCE

Regular maintenance ensures optimal performance and extends the lifespan of your robot vacuum.

5.1 Dustbin and Filter Cleaning

Empty the 450ml dustbin after each cleaning cycle. Clean the foam and high-efficiency filters regularly by tapping out debris or rinsing with water (ensure completely dry before reinserting).

5.2 Side Brush Cleaning

Remove and clean the side brushes periodically to remove tangled hair or debris.

5.3 Main Brush (Brushless)

The robot features an advanced non-rolling brush design to prevent hair entanglement, making it ideal for pet owners. Periodically check the suction port for any blockages.

5.4 Water Tank and Mopping Cloth

Empty and rinse the water tank after each mopping session. Wash the mopping cloth regularly to maintain cleaning effectiveness.

5.5 Sensor Cleaning

Wipe the sensors on the robot with a dry cloth to ensure accurate navigation and obstacle avoidance.

6. TROUBLESHOOTING

If you encounter issues, refer to the FQA guide included in the box or try the following common solutions:

- **Robot not charging:** Ensure the charging dock is properly plugged in and the robot is correctly aligned with the charging contacts.

- **Robot stuck:** Clear any obstacles or loose cables from the robot's path. Clean sensors if they are dirty.
- **Poor cleaning performance:** Empty the dustbin, clean filters, and check brushes for entanglement.
- **App connection issues:** Ensure your Wi-Fi is 2.4GHz and the robot is within range. Restart the app and the robot.
- **Non-stopping beeping:** Refer to the FQA guide for specific error codes and solutions.

7. SPECIFICATIONS

Feature	Detail
Brand	MAMNV
Model Name	Robot Vacuum BR151
Special Feature	Pet Hair Pick Up, Scheduling, Variable Suction Control, Wet/Dry
Product Dimensions	11.8"L x 11.8"W x 2.87"H
Filter Type	Foam, High Efficiency Filter
Battery Life	100 minutes (2500mAh)
Voltage	220 Volts
Dustbin Capacity	450 Milliliters
Water Tank Capacity	230 Milliliters
Power Source	Battery Powered
Control Method	App, Remote, Touch, Voice
Compatible Devices	Google Home, Smartphones
Item Weight	5.73 pounds
Suction Power	1400Pa Max
Noise Level	Ultra-low 60 decibel

8. WARRANTY AND SUPPORT

For warranty claims, technical support, or any questions regarding your MAMNV Robot Vacuum and Mop Combo BR151, please refer to the contact information provided in your FQA guide or visit the official MAMNV website. Keep your purchase receipt as proof of purchase for warranty services.