

[Manuals.plus](#) /

› [MIUFLY](#) /

› MIUFLY S2 PRO 2K Voice Control Camera User Manual

MIUFLY S2_PRO

MIUFLY S2 PRO 2K Voice Control Camera User Manual

Model: S2_PRO | Brand: MIUFLY

INTRODUCTION

The MIUFLY S2 PRO is a robust wearable camera designed for security and personal use, offering high-quality 2K video recording. It features advanced voice control capabilities, extended battery life, and integrated GPS for comprehensive data capture. Its durable construction ensures reliability in various environments.



Image: Front view of the MIUFLY S2 PRO 2K Voice Control Camera, showcasing its compact and rugged design.

WHAT'S IN THE BOX

Verify that all items listed below are included in your package:

- S2 Pro Camera
- USB Charger

- USB Cable
- Epaulette clip
- Universal crocodile clip
- Adapter clip
- Charging Base

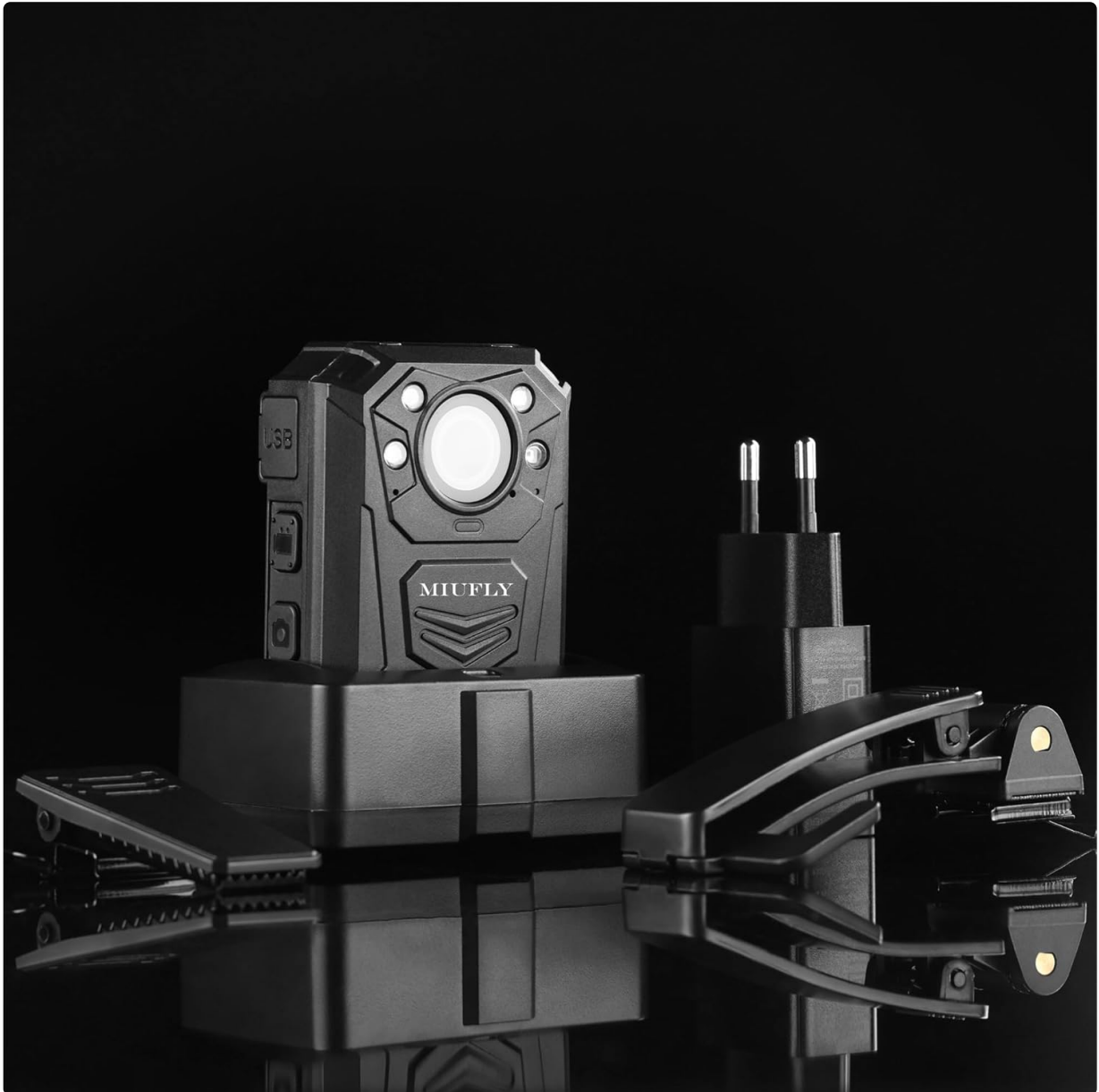


Image: The MIUFLY S2 PRO camera displayed with its included accessories, such as the charging base, USB cable, and various mounting clips.

SETUP

1. Charging the Device

Before initial use, fully charge the MIUFLY S2 PRO camera. Connect the provided USB cable to the charging base, then connect the charger to a power outlet. Place the camera onto the charging base, ensuring the contacts align. A full charge provides up to 15 hours of recording time at 1080P resolution with infrared (IR) off. The built-in battery is 4200mAh Li-polymer.

2. Attaching Mounting Clips

The camera comes with several mounting options for versatile use. Select the appropriate clip (epaulette, universal crocodile, or adapter clip) and securely attach it to the back of the camera. Ensure the clip is firmly in place before wearing the device.

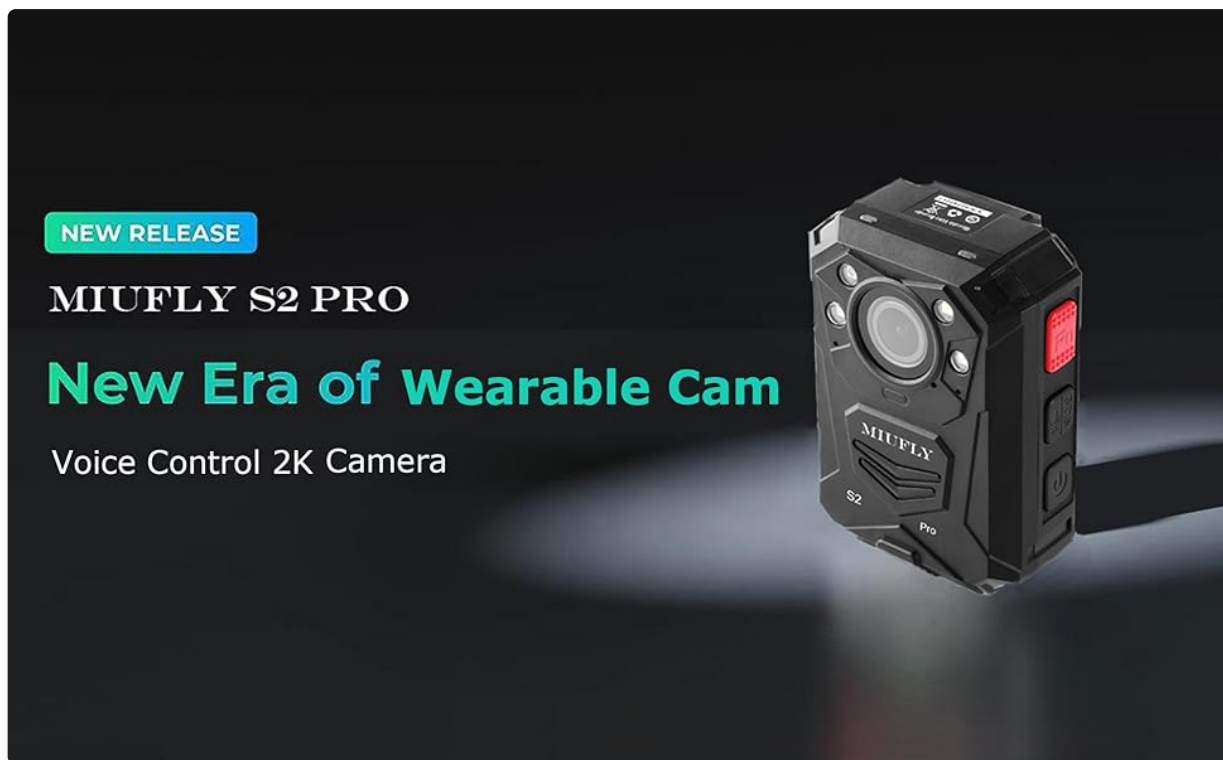


Image: The MIUFLY S2 PRO camera securely attached to clothing, demonstrating its wearable design.

OPERATING INSTRUCTIONS

1. Power On/Off

To power on the device, press and hold the power button for 3 seconds. To power off, repeat the same action.

2. Recording Video

Once powered on, the camera is ready to record. Press the dedicated video recording button to start or stop recording. The camera supports various resolutions including 2688x1512 (2K) at 30fps, 1920x1080 (1080P) at 30fps, and 1280x720 (720P) at 30fps. Features like loop recording and motion detection are available.

3. Taking Pictures

Press the dedicated photo button to capture still images. This can be done even while video recording is active.

4. Voice Control

The S2 PRO features voice control for hands-free operation. Use specific commands such as "MIUFLY" followed by an action like "Take Picture" to control the camera remotely.

5. GPS Functionality

With built-in GPS, the camera records the driving route, real-time speed, and location. This data can be viewed using a compatible GPS player software.



Image: A laptop screen displaying GPS tracking data, illustrating the camera's built-in GPS feature.

MAINTENANCE

To ensure the longevity and optimal performance of your MIUFLY S2 PRO camera, follow these maintenance guidelines:

- **Cleaning the LCD Screen:** Use a soft, dry, lint-free cloth to clean the LCD screen. Do not use sharp objects, pens, or other hard items on the screen as this may cause damage. Avoid alcohol-based cleaning agents on the LCD.
- **General Care:** Keep the camera free from dust and debris. Store it in a cool, dry place when not in use.
- **Water Resistance:** The camera is IP67 waterproof, designed to withstand heavy rains. However, avoid submerging the device in water for extended periods.
- **Drop Resistance:** The durable ABS shell provides up to 2 meters of drop resistance. While robust, avoid unnecessary impacts.



Image: The MIUFLY S2 PRO camera shown with water droplets, illustrating its IP67 waterproof resistance.

TROUBLESHOOTING

1. Device Not Powering On

- Ensure the battery is sufficiently charged. Connect the camera to the charging base and allow it to charge for at least 30 minutes before attempting to power on again.
- Verify that the power button is held for the required 3 seconds.

2. Connectivity Issues with Computer

- Ensure the USB cable is securely connected to both the camera and the computer.
- Try a different USB port on your computer.
- If using a Windows PC and the camera is not recognized as an external drive, try updating your computer's USB drivers or connecting to a different operating system (e.g., macOS, Linux) to rule out a camera issue.

3. Recording Issues (No Footage)

- Check the camera's internal memory capacity. Ensure there is sufficient space for new recordings. The device has built-in 128GB memory.
- Perform a factory reset if persistent recording issues occur. Refer to the full user manual for instructions on how to reset the device.

SPECIFICATIONS

Feature	Detail
Brand Name	MIUFLY
Item Weight	6 ounces
Product Dimensions	2.2 x 1.2 x 3.1 inches
Item Model Number	S2_PRO
Batteries	1 Lithium Polymer battery required (included)
Special Features	Night Vision, Voice Control
Photo Sensor Technology	CMOS
Video Capture Resolution	2K
Maximum Focal Length	140 Millimeters
Maximum Aperture	1.4 f
Flash Memory Type	Micro SD (Built-in 128GB)
Video Capture Format	MPEG 4
Supported Audio Format	AAC
Screen Size	2 Inches
Connectivity Technology	USB

WARRANTY AND SUPPORT

For detailed warranty information, please refer to the complete user manual provided with your product or

visit the official MIUFLY website. If you encounter any issues not covered in this manual or require further assistance, please contact MIUFLY customer support through their official channels.

A PDF version of the user manual is available for download:[Download User Manual \(PDF\)](#)