

TOPWISH XBUS-AWH-001

TOPWISH Portable Propane Tankless Water Heater XBUS-AWH-001 Instruction Manual

1. INTRODUCTION

Thank you for choosing the TOPWISH Portable Propane Tankless Water Heater, Model XBUS-AWH-001. This compact and efficient unit is designed to provide instant hot water for various outdoor activities, including RV travel, camping, pet bathing, pool showering, car washing, and beach bathing. Its tankless design ensures hot water on demand, making it a convenient solution for your outdoor hot water needs. Please read this manual thoroughly before installation and operation to ensure safe and optimal performance.

INTELLIGENT KNOB CONTROL



Image: The TOPWISH Portable Propane Water Heater, showcasing its compact design and control knobs.

2. SAFETY INFORMATION

Your safety is paramount. This appliance must be used strictly in accordance with the instructions provided. Failure to do so may result in fire, explosion, property damage, personal injury, or death.

- **Outdoor Use Only:** This water heater is designed for outdoor use only. Never use it in an enclosed space such as a camper, tent, car, or home, as it produces carbon monoxide, which has no odor and can be fatal.
- **Ventilation:** Ensure adequate ventilation when operating.
- **Gas Leak Check:** Always check for gas leaks before operation using a soap and water solution on all gas connections. Bubbles indicate a leak.
- **Water Temperature:** Hot water can cause scalding. Always test the water temperature before use, especially for children or pets.
- **Safety Features:** The unit is equipped with multiple safety protections including overheat protection, dry burning protection, flame fault device, anti-freeze protection, low-flow water protection, and high water pressure protection. Do not tamper with these safety mechanisms.
- **CSA Certified Regulator:** Use only the provided CSA certified regulator for safe operation.

PORTABLE CARRY/HANGING HANDLE

Compact Size and Lightweight Design



Image: Visual representation of the water heater's multiple safety protection features, including overheat, dry burning, flame fault, anti-freeze, low-flow, and high water pressure protection.

3. PACKAGE CONTENTS

Verify that all items are present and undamaged upon unpacking:

- TOPWISH Portable Propane Water Heater Unit
- Shower Head with 3 spray patterns
- Gas Regulator Hose
- 2m Water Outlet Hose
- Water Adapters (2 pcs)
- Mounting Hardware (screws, wall plugs)
- User's Manual



Image: A detailed view of the water heater's dimensions and all components included in the package, such as hoses, adapters, and the shower head.

4. SETUP

4.1 Mounting the Unit

The water heater features a portable handle for easy transport and hanging. It can also be mounted using the provided hardware.

Diversified Hot Water Demand Solution

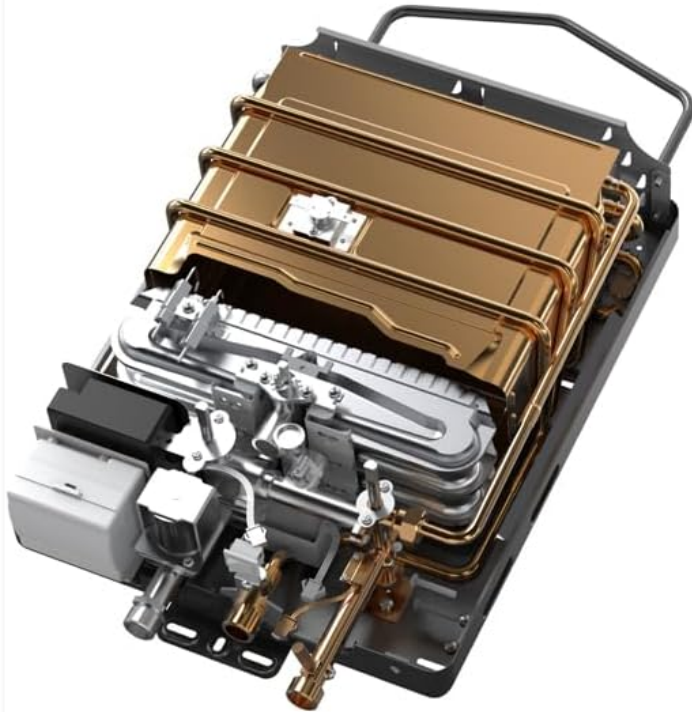


Image: The water heater with its integrated carry/hanging handle, demonstrating its portability for various outdoor scenarios like RV travel and camping.

4.2 Battery Installation

The unit requires two D-cell batteries (not included) for ignition. Open the battery compartment on the side of the unit, insert the batteries according to polarity markings, and close the compartment.



Image: A close-up view of the battery compartment, showing the insertion of D-cell batteries for the igniter.

4.3 Gas Connection

1. Connect the gas regulator hose to the gas inlet on the water heater. Ensure it is tightened securely.
2. Connect the other end of the gas regulator hose to your propane tank. Tighten firmly.
3. Perform a gas leak check: Apply a soap and water solution to all gas connections. If bubbles appear, there is a leak. Tighten connections or replace seals as necessary.



Image: A hand applying a soapy solution to a gas connection on the water heater, demonstrating the method for checking gas leaks.

4.4 Water Connections

1. Connect the cold water inlet hose (typically a garden hose) to the water inlet on the unit. Use the provided water adapters if necessary.
2. Connect the shower hose to the hot water outlet on the unit. Ensure the black washer is properly seated in the connector for a watertight seal.
3. Attach the shower head to the other end of the shower hose.



Image: A hand connecting a water inlet hose to the water heater, illustrating the setup process for water supply.

5. OPERATING INSTRUCTIONS

5.1 Initial Start-up

1. Ensure all gas and water connections are secure and leak-free.
2. Turn on the main power switch on the unit.
3. Open the propane tank valve.
4. Open the water supply valve.
5. Open the shower head valve. The unit will automatically ignite and begin heating water.

5.2 Temperature and Water Flow Control

The water heater features intelligent knob controls for adjusting gas flow (heat) and water flow (volume).

- **Gas Control Center:** Adjusts the flame size, directly impacting the water temperature. Turning it towards the

'max' setting increases heat.

- **Water Control Center:** Adjusts the water quantity. Lowering the water flow rate can increase the water temperature, and vice versa.
- **Temperature Display:** The digital display shows the current water temperature in Celsius.

Recommendation: Always start with both gas and water flow settings at their lowest to avoid excessively hot water. Gradually increase the settings to achieve your desired temperature. For best performance, especially in colder conditions, start with low gas and high water supply, then adjust the gas supply.

MULTIPLE SAFETY PROTECTION

Ensure a Longlasting Service Life



Image: A close-up view of the water heater's intelligent knob controls, highlighting the temperature display, gas control, and water control centers.

5.3 Shower Head Functions

The equipped shower head offers multiple spray patterns (Mist, Shower, Jet) for varied uses.

5.4 Shutting Down

To turn off the unit, simply close the shower head valve or turn off the water supply. The flame will extinguish automatically. Then, close the propane tank valve and turn off the main power switch.

Your browser does not support the video tag.

Video: A detailed demonstration of the TOPWISH Portable Gas Water Heater, showing its setup, operation, and temperature adjustment for various uses.

Your browser does not support the video tag.

Video: An instructional video demonstrating the installation process and necessary components for the water heater, highlighting ease of setup.

6. MAINTENANCE

Regular maintenance ensures the longevity and safe operation of your water heater.

- **Cleaning:** Periodically clean the exterior of the unit with a damp cloth. Do not use abrasive cleaners.
- **Connections:** Regularly inspect all gas and water connections for wear, damage, or leaks.
- **Winterization:** If storing the unit in freezing temperatures, ensure all water is drained to prevent damage from freezing. The unit has anti-freeze protection, but proper drainage is still recommended for storage.
- **Battery Replacement:** Replace D-cell batteries when the ignition becomes weak or fails.

7. TROUBLESHOOTING

If you encounter issues with your TOPWISH Portable Propane Water Heater, refer to the following common problems and solutions:

Problem	Possible Cause	Solution
Unit does not ignite.	No water flow, low water pressure, no gas supply, dead batteries.	Ensure water supply is on and pressure is adequate. Check propane tank level and valve. Replace D-cell batteries.
Water is not hot enough.	Gas flow too low, water flow too high, cold ambient temperature.	Increase gas flow (turn gas knob towards max). Decrease water flow (turn water knob towards min).
Unit shuts off after a short period (e.g., 1 minute).	Insufficient water flow, overheating protection activated.	Ensure consistent water flow and adequate water pressure. If overheating, reduce gas flow or increase water flow.
Gas leaks detected.	Loose connections, damaged seals.	Tighten all gas connections. Replace any damaged gaskets or seals. Do not operate with a gas leak.



Image: A visual warning indicating overheating protection, showing the water heater in an outdoor setting with water flowing.

8. SPECIFICATIONS

- **Brand:** TOPWISH
- **Model:** XBUS-AWH-001
- **Heat Output:** 132 Kilowatts
- **Mounting Type:** Portable (Floor/Hanging)
- **Is Electric:** No
- **Item Weight:** 15.17 pounds
- **Product Dimensions:** 11.42 x 5.91 x 14.57 inches
- **Capacity:** 1.32 Gallons per Minute (GPM)
- **Power Source:** Liquid Propane
- **Material:** Copper (Heat Exchanger)
- **Special Feature:** Portable

9. WARRANTY AND SUPPORT

The TOPWISH Portable Propane Water Heater comes with a 1-year guarantee. For any product inquiries, technical support, or warranty claims, please refer to the contact information provided in your purchase documentation or on the TOPWISH official website.