

Kingston IKKP200C

Kingston Ironkey Keypad 200 USB-C 32GB Encrypted Flash Drive Instruction Manual

MODEL: IKKP200C/32GB

Product Overview

The Kingston IronKey Keypad 200 series are OS-independent hardware-encrypted USB Type-C drives with an alphanumeric keypad for easy-to-use PIN access. The KP200 incorporates XTS-AES 256-bit hardware-based encryption. It is FIPS 140-3 Level 3 (Pending) certified for military-grade security with enhancements that further elevate the bar for data protection. Its circuitry is covered by a layer of special epoxy that makes it virtually impossible to remove components without damaging them. The drive is designed to be tamper-evident to alert owners. It also incorporates Brute Force password attack protection, and BadUSB protection with digitally signed firmware. The alphanumeric keypad is coated with a layer of polymer that protects the keys and hides key usage through analysis of fingerprints on the keys.

Key Features

- FIPS 140-3 Level 3 (Pending) with XTS-AES 256-bit Encryption
- Brute Force and BadUSB Attack Protection
- Multi-PIN (Admin and User) Option
- Global or Session Read-Only Option

Getting Started: Initial Setup

Before first use, you must set up an Admin PIN for your Kingston Ironkey Keypad 200. This PIN is crucial for accessing and managing the drive's features. Refer to the quick start guide included in the packaging for detailed steps.

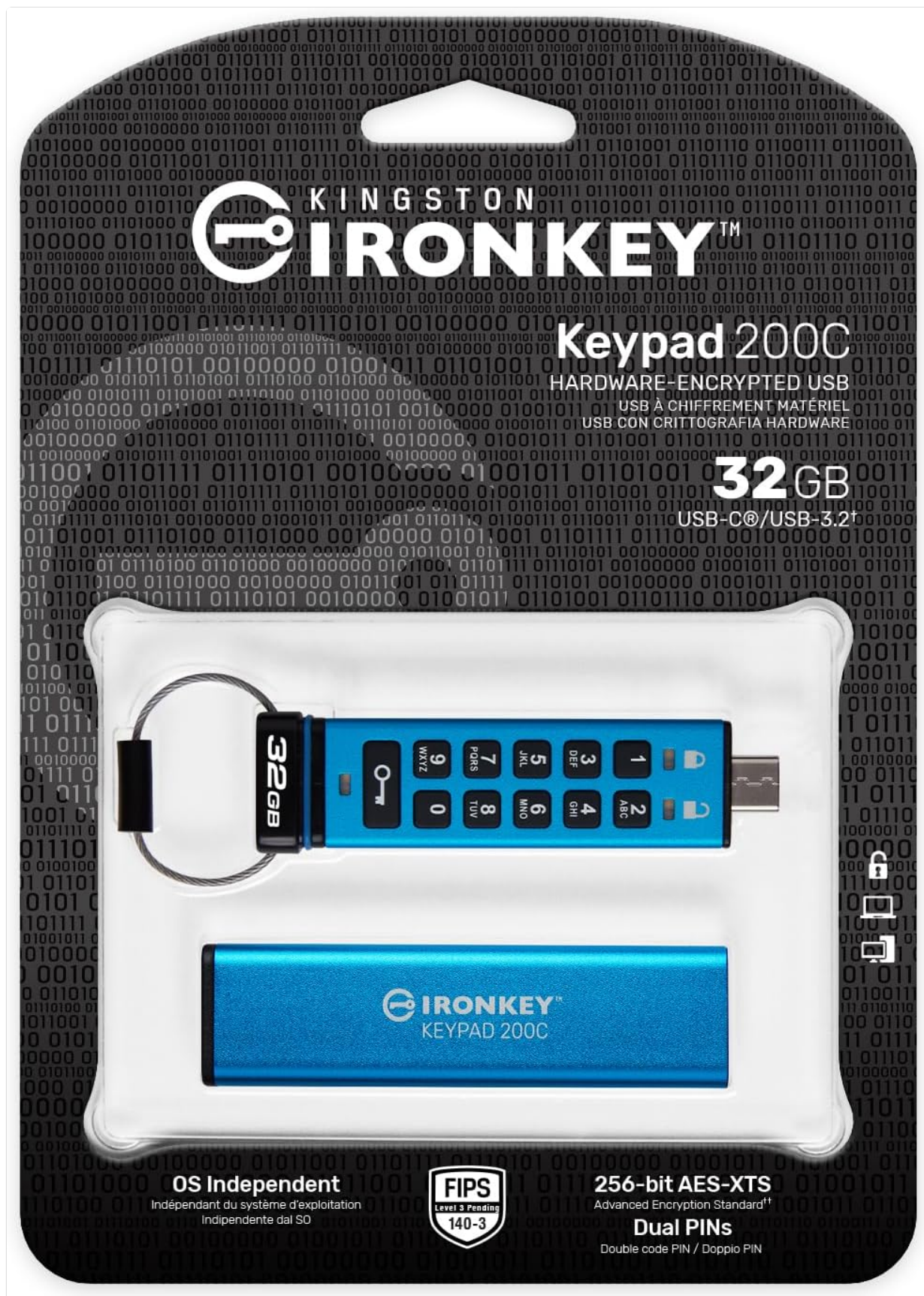
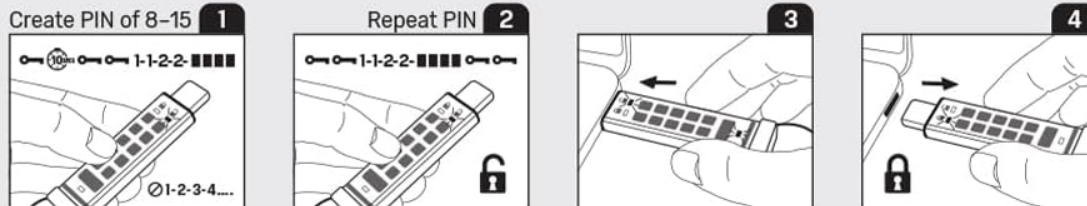


Figure 1: Kingston Ironkey Keypad 200 USB-C 32GB Flash Drive in its retail packaging, highlighting the keypad and key security features.



kingston.com/ironkey

WARRANTY / GARANTÍA / GARANTIE / GARANTIA / GARANZIA / ГАРАНТИЯ / GARANTI / GWARANCJA / ZÁRUKA / الضمان / GARANCIA / ΕΓΓΥΗΣΗΣ / GARANȚIA / JAMSTVO / 保固 / 保証 / KINGSTON.COM/WA



FULL USER GUIDE / GETTING STARTED / CHANGE PIN: kingston.com/IKKP200 / GUIDE D'UTILISATION COMPLET / POUR DÉBUTER / CHANGER LE CODE PIN: kingston.com/IKKP200 / MANUALE UTENTE COMPLETO / GUIDA INTRODUTTIVA / MODIFICA PIN: kingston.com/IKKP200 / VOLLSTÄNDIGE ANLEITUNG / ERSTE SCHRITTE / PIN ÄNDERN: kingston.com/IKKP200 / GUIA DE USUARIO COMPLETA / CÓMO COMENZAR / CAMBIAR PIN: kingston.com/IKKP200 / GUIA DO USUÁRIO COMPLETO / INICIANDO / ALTERAR SENHA: kingston.com/IKKP200 / PEŁNY PODRĘCZNIK UŻYTKOWNIKA / WPROWADZENIE / ZMIEN KOD PIN: kingston.com/IKKP200 / 完全使用者指南 / 開始使用 / 更改 PIN: kingston.com/IKKP200 / 完整用戶指南 / 入門指南 / 更改 PIN: kingston.com/IKKP200 / ユーザーガイドの完全版 / はじめに / PIN の変更: kingston.com/IKKP200

USB 3.2 Gen 1, *1256-bit AES hardware-based encryption. See kingston.com/ironkey. / Cifrado basado en hardware AES de 256 bits. Consulte kingston.com/ironkey. / Chiffrement matériel AES 256 bits. Visitez kingston.com/ironkey. / 256-Bit-Verschlüsselung auf AES-Basis. Siehe kingston.com/ironkey. / Criptação de 256 bits AES com base em hardware. Consulte kingston.com/ironkey. / Crittografia hardware con protocollo AES 256-bit. Per ulteriori informazioni, accedere al link: kingston.com/ironkey. / 256-bitowe sprzętowe szyfrowanie AES. Wejdź na kingston.com/ironkey. / 256bitové hardwarové šifrování AES. Viz kingston.com/ironkey. / 256-bitное аппаратное шифрование AES См. kingston.com/ironkey. / 256 bit AES donanım tabanlı şifreleme. kingston.com/ironkey sayfasına bakın. / 256 位 AES 硬件加密. 請參見 kingston.com/ironkey.

Ironkey Keypad 200 series incorporates DataLock® Secured Technology licensed from ClevX, LLC. Actual available capacity for data storage is less than as listed on the products due to formatting and other functions. See kingston.com/flashguide. / Debido al formateo y a otras funciones, la capacidad real disponible para el almacenamiento de datos es menor de la que se indica en los productos. Consulte kingston.com/flashguide. / La capacité réelle de stockage des données est inférieure à celle indiquée, parce qu'une partie est occupée par le formatage et d'autres fonctions. Consultez kingston.com/flashguide. / Aufgrund der Formatierung und anderer Funktionen ist die tatsächlich zur Verfügung stehende Speicherkapazität niedriger als auf den Produkten angegeben. Siehe kingston.com/flashguide. / A capacitate disponibilă real pentru stocarea datelor este mai mică decât capacitatea nominală a produselor datorită procesului de formatare și a altor funcții ale acestuia. Pentru mai multe detalii vă rugăm accesați kingston.com/flashguide. / Rzeczywista pojemność dostępna do przechowywania danych jest mniejsza niż podana na produktach z uwagi na obsługę formatowania i innych funkcji. Zobacz kingston.com/flashguide. / Kvůli formátování a dalším funkcím je pro ukládání dat ve skutečnosti k dispozici nižší kapacita, než se u produktů uvádí. Viz kingston.com/flashguide.

Actual available capacity for data storage is less than as listed on the products due to formatting and other functions. See kingston.com/flashguide. / Debido al formateo y a otras funciones, la capacidad real disponible para el almacenamiento de datos es menor de la que se indica en los productos. Consulte kingston.com/flashguide. / La capacité réelle de stockage des données est inférieure à celle indiquée, parce qu'une partie est occupée par le formatage et d'autres fonctions. Consultez kingston.com/flashguide. / Aufgrund der Formatierung und anderer Funktionen ist die tatsächlich zur Verfügung stehende Speicherkapazität niedriger als auf den Produkten angegeben. Siehe kingston.com/flashguide. / A capacitate disponibilă real pentru stocarea datelor este mai mică decât capacitatea nominală a produselor datorită procesului de formatare și a altor funcții ale acestuia. Pentru mai multe detalii vă rugăm accesați kingston.com/flashguide. / Rzeczywista pojemność dostępna do przechowywania danych jest mniejsza niż podana na produktach z uwagi na obsługę formatowania i innych funkcji. Zobacz kingston.com/flashguide. / Kvůli formátování a dalším funkcím je pro ukládání dat ve skutečnosti k dispozici nižší kapacita, než se u produktů uvádí. Viz kingston.com/flashguide.



DATALOCK® SECURED
CLEVX, LLC, U.S. PATENT
www.clevx.com/patents
kingston.com/battery



PAP21 Raccolta Carta
PET1 Raccolta Plastica
VERIFICA LE DISPOSIZIONI DEL TUO COMUNE



Tested To Comply
With FCC Standards
For Home or Office Use

D43254
RoHS
CAN ICES-3(B)
/NMB-3(B)



6 6 0 7 7 5 0 B



6607750B

Figure 2: The back of the product packaging provides a visual guide for creating your initial PIN, including repeating the PIN for confirmation.

Video Guide: Ironkey Keypad 200 Walkthrough

Your browser does not support the video tag.

This video provides a comprehensive walkthrough of the Kingston Ironkey Keypad 200, demonstrating its features and initial setup process.

Operating Your IronKey Keypad 200

Unlocking the Drive

To unlock the drive, you must enter your PIN using the integrated keypad before connecting it to your computer. Once the correct PIN is entered and confirmed, the drive will be accessible. Alternatively, for models without a physical keypad, you will be prompted to enter your password via a software interface upon connection.

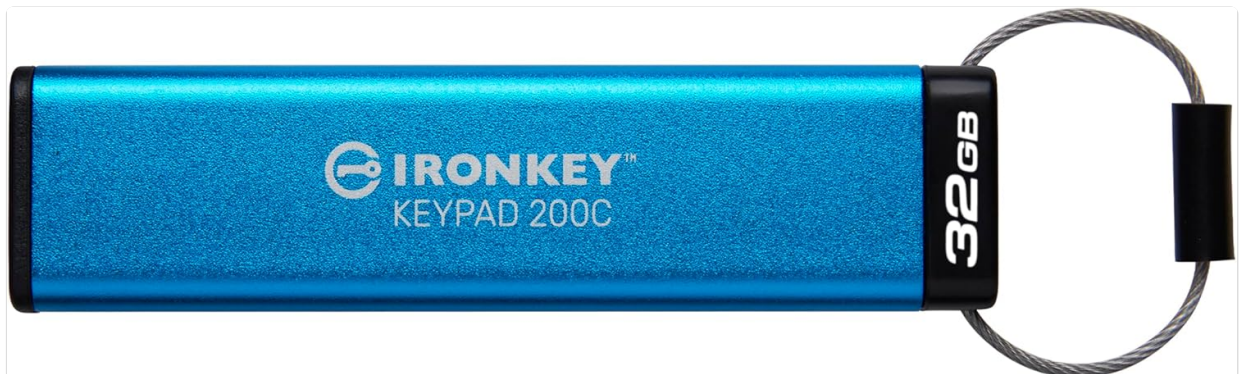


Figure 3: The Kingston IronKey Keypad 200 with its protective cap removed, revealing the USB-C connector and the alphanumeric keypad for PIN entry.

Admin and User PINs

The drive supports multiple PINs, including an Admin PIN and User PINs. The Admin PIN provides full access to all drive settings and data, while User PINs can be configured with restricted access, such as read-only mode.

Read-Only Mode

The Global or Session Read-Only Option allows you to prevent data modification on the drive. This can be set globally by the administrator or for a specific session by the user, providing an extra layer of data protection against malware or accidental changes.

Video Guide: Ironkey D500S Software Walkthrough (Similar Concepts)

Your browser does not support the video tag.

This video, while for a similar Ironkey D500S model, demonstrates the software interface for login, admin settings, password management, and read-only mode, which are conceptually similar for the Keypad 200 series.

Maintenance and Best Practices

- **Remember Your PIN:** Always keep your Admin and User PINs secure and memorable. Forgetting the Admin PIN may lead to data loss.
- **Safely Eject:** Always safely eject the drive from your computer before physically removing it to prevent data corruption.
- **Physical Protection:** Keep the protective cap on the USB connector when not in use to shield it from dust and physical damage.
- **Regular Backups:** While the Ironkey provides robust security, regular backups of critical data to another secure location are always recommended.

Troubleshooting

Forgotten PIN

If you forget your **Admin PIN**, the drive may require a full reset, resulting in data loss. There is no recovery mechanism for a forgotten Admin PIN due to the hardware encryption. If a **User PIN** is forgotten, and a One-Time Recovery Password feature was previously enabled by the administrator, it can be used to regain access and reset

the User PIN. Otherwise, the administrator may need to reset the User PIN.

Drive Not Recognized

- Ensure the drive is fully inserted into a compatible USB-C port.
- Verify that the correct PIN has been entered and the drive is successfully unlocked (indicated by the green LED).
- Try connecting the drive to a different USB-C port or another computer to rule out port or system issues.

Product Specifications

Model Name	Kingston IronKey Keypad 200
Item Model Number	IKKP200C/32GB
Memory Storage Capacity	32 GB
Hardware Interface	USB 3.2 Gen 1
Connectivity Technology	USB
Read Speed	145 Megabytes Per Second
Write Speed	145.0
Special Feature	Encrypted
Item Weight	0.882 ounces
Product Dimensions	3.15 x 0.8 x 0.43 inches
Manufacturer	Kingston Digital, Inc.

Warranty and Support

For detailed warranty information, technical support, and additional resources, please visit the official Kingston support website.

Kingston Support: kingston.com/support