



Manuals.plus /

› Schonbek /

› Schonbek Signature 6860-40H Olde World Chandelier Instruction Manual

Schonbek 6860-40H

Schonbek Signature 6860-40H Olde World Chandelier Instruction Manual

Model: 6860-40H | Brand: Schonbek

1. PRODUCT OVERVIEW

The Schonbek Olde World Chandelier, model 6860-40H, is a 25-light fixture featuring hand-formed crystal columns, arms, and scrolls. This chandelier is designed and manufactured in the U.S.A. with a durable steel frame and an etched crystal vase. It is adorned with crystal pendeloques and drops, utilizing Heritage Handcut Crystals crafted in Europe using centuries-old techniques. This fixture is intended for indoor use only.



Figure 1: Schonbek Signature 6860-40H Olde World Chandelier.

2. SETUP AND INSTALLATION

Before beginning installation, ensure the power supply is turned off at the circuit breaker. This fixture requires assembly and pinning of crystals. All necessary mounting hardware and instruction sheets are included in the box.

2.1 Mounting Requirements

- The chandelier mounts to an electrical box rated for a minimum of 62 lbs.
- The fixture is chain-suspended from a canopy. 120 inches of chain in a matching finish are included and can be adjusted during installation.
- 180 inches of total wire are included, allowing for a maximum suspension up to 230.5 inches with additional chain (sold separately).
- The chandelier can be installed on a sloped ceiling with an angle up to 45 degrees.

2.2 Assembly Steps

1. Carefully unpack all components and verify against the included parts list.
2. Follow the detailed instructions provided in the included instruction sheets for mounting the canopy and connecting electrical wiring.
3. Assemble the chandelier frame and attach the crystal components as indicated in the diagrams. Crystal pinning is required.
4. Ensure all electrical connections are secure and properly insulated.
5. Once assembly is complete, restore power and test the fixture.



Figure 2: Chandelier installed in a typical setting.

3. OPERATING INSTRUCTIONS

3.1 Bulb Requirements

The chandelier requires a total of 25 light bulbs:

- 20 x E12 base, B10 shape 120V light bulbs, 60W maximum each.

- 5 x E12 base, C7 shape 120V light bulbs, 7.5W maximum each.

Incandescent or LED bulbs can be used (bulbs are sold separately).

3.2 Dimming Functionality

This fixture supports smooth and continuous dimming when used with a compatible dimmer switch. Ensure your dimmer switch is rated for the total wattage of the installed bulbs.

3.3 Control Method

The chandelier is controlled via a standard wall switch or a compatible touch-sensitive dimmer switch (if installed). There are no direct controls on the fixture itself.

4. MAINTENANCE

4.1 Cleaning the Fixture

- **Crystals:** To clean the Heritage Handcut Crystals, gently wipe them with a soft, lint-free cloth dampened with distilled water or a specialized crystal cleaner. Avoid harsh chemicals or abrasive materials that could scratch the crystal surface.
- **Metal Frame:** For the silver-finished metal frame, use a soft, dry cloth to dust. Do not use abrasive cleaners or polishes, as these may damage the finish.
- Always ensure the power to the fixture is turned off before cleaning.

CRYSTAL SELECTIONS



RADIANCE CRYSTAL

Our finest crystal offering in cut, color, and clarity, Radiance™ by Schonbek is characterized by optical purity and prism



HERITAGE HANDCUT CRYSTAL

Heritage Handcut® Crystal is hand-cut by craftsman using centuries-old techniques

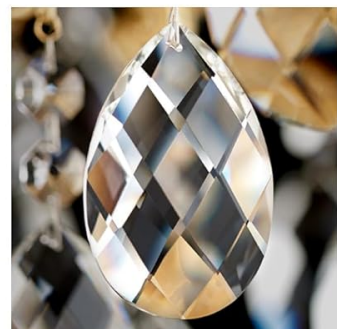


Figure 3: Close-up of Heritage Handcut Crystals.

4.2 Bulb Replacement

When replacing bulbs, ensure the power is off and allow bulbs to cool completely. Use only bulbs that match the specified E12 base, shape, voltage, and wattage requirements (20 x B10 shape 60W max, 5 x C7 shape 7.5W max). Refer to section 3.1 for detailed bulb specifications.

5. TROUBLESHOOTING

If you encounter issues with your chandelier, consult the following common troubleshooting steps:

Problem	Possible Cause	Solution
Lights do not turn on	No power, loose wiring, faulty bulbs, tripped circuit breaker	Check circuit breaker. Ensure all wiring connections are secure. Replace bulbs.
Lights flicker	Loose bulb, incompatible dimmer, faulty wiring	Tighten bulbs. Verify dimmer compatibility. Consult a qualified electrician for wiring issues.
Dimming not working	Incompatible dimmer switch, incorrect wiring	Ensure a compatible dimmer is installed. Check dimmer wiring.
Crystals are loose or detached	Improper pinning during assembly, vibration	Re-pin crystals securely according to assembly instructions.

6. SPECIFICATIONS

Brand	Schonbek
Model Name	Olde World
Model Number	6860-40H
Product Dimensions	35.5"L x 35.5"W x 46"H
Item Weight	62 Pounds
Color	Silver
Material	Glass (Crystals), Steel (Frame)
Style	Clear Heritage Handcut Crystals
Number of Lights	25 (20 x B10 shape, 5 x C7 shape)
Bulb Base	E12
Maximum Compatible Wattage	1237.5 Watts (total)
Voltage	120 Volts
Light Source Type	LED compatible (incandescent also supported)
Brightness	8400 Lumen (with compatible bulbs)
Color Temperature	3000 Kelvin (with compatible bulbs)
Average Life	50000 Hours (with compatible LED bulbs)
Dimmable	Yes, with compatible dimmer
Assembly Required	Yes
Certifications	UL, cUL, CSA rated for indoor locations
UPC	771857823684

6.1 Crystal Types

The Olde World Chandelier is available with different crystal trim options. This specific model features Heritage Handcut Crystals.

- **Heritage Handcut Crystal:** Crafted in Europe using authentic, centuries-old techniques, showcasing artistry and craftsmanship.
- *Radiance Crystal (alternative option, not included with this model):* An optically pure and brilliant lead-free crystal, fabricated in Europe with no flaws or imperfections, featuring nearly double the jewel-cut facets compared to traditional Bohemian crystal.



Figure 4: Crystal Selections (Heritage Handcut Crystal is featured in this model).

7. WARRANTY INFORMATION

This Schonbek chandelier includes a Manufacturer Warranty Certificate. Please refer to this document for detailed information regarding warranty coverage, terms, and conditions. Keep your proof of purchase for warranty claims.

8. CUSTOMER SUPPORT

For further assistance, technical support, or inquiries not covered in this manual, please contact Schonbek customer service. Ensure you have your model number (6860-40H) and proof of purchase available when contacting support. The product package includes additional instruction sheets and a Certificate of Authenticity. You can find contact information for Schonbek on their official website or through your retailer.

