

beyerdynamic M 201

Beyerdynamic M 201 Hypercardioid Dynamic Instrument Microphone User Manual

Model: M 201

1. INTRODUCTION

This manual provides essential information for the proper setup, operation, and maintenance of your Beyerdynamic M 201 Hypercardioid Dynamic Instrument Microphone. Please read this manual thoroughly before using the product to ensure optimal performance and longevity.

The Beyerdynamic M 201 is a high-quality dynamic microphone designed for instrument recording and live sound applications. Its hypercardioid polar pattern offers excellent off-axis rejection, making it suitable for isolating sound sources in complex acoustic environments.

2. KEY FEATURES

- **Hypercardioid Polar Pattern:** Provides superior isolation of the sound source and reduces feedback.
- **Dynamic Transducer:** Robust and capable of handling high sound pressure levels (SPL).
- **Durable Metal Construction:** Ensures reliability and longevity in various environments.
- **XLR Connectivity:** Standard professional audio connection for compatibility with mixers and audio interfaces.
- **Compact Form Factor:** Facilitates easy placement in tight spaces.

3. WHAT'S INCLUDED

Upon unpacking your Beyerdynamic M 201, please ensure all items are present:

- Beyerdynamic M 201 Microphone
- Microphone Clip (MA-CL 25)
- Carrying Case



M 201



MIKROFONKLAMMER
MA-CL 25



MIKROFON-CASE

Image: The Beyerdynamic M 201 microphone, its MA-CL 25 microphone clip, and the protective carrying case.

4. SETUP INSTRUCTIONS

1. **Attach Microphone Clip:** Secure the MA-CL 25 microphone clip to a standard microphone stand.
2. **Mount Microphone:** Carefully insert the Beyerdynamic M 201 microphone into the clip. Ensure it is firmly seated.
3. **Connect XLR Cable:** Connect a balanced XLR cable (not included) to the microphone's XLR output and to an input on your audio mixer or audio interface.
4. **Positioning:** Position the microphone appropriately for the sound source. The hypercardioid pattern is most sensitive directly in front of the microphone.



Image: The M 201 microphone mounted on a stand, positioned to capture sound from a snare drum. This illustrates a typical setup for drum recording.



Image: The M 201 microphone on a stand, capturing audio from an acoustic guitar. This demonstrates its use for acoustic instruments.



Image: The M 201 microphone placed in front of an electric guitar amplifier, suitable for capturing amplified instrument sounds.

5. OPERATING INSTRUCTIONS

The Beyerdynamic M 201 is a passive dynamic microphone and does not require phantom power. It is ready for use once connected to an appropriate input.

- **Gain Staging:** Adjust the gain on your mixer or audio interface to achieve an optimal signal level without clipping.
- **Proximity Effect:** Be aware of the proximity effect, where bass frequencies are accentuated when the microphone is close to the sound source. Adjust positioning as needed for desired tonal balance.
- **Off-Axis Rejection:** Utilize the hypercardioid pattern by aiming the microphone directly at the desired sound source and positioning unwanted sound sources in the null points (sides) of the microphone.

6. MAINTENANCE AND CARE

- **Cleaning:** Use a soft, dry cloth to clean the microphone body. Do not use liquid cleaners or solvents.
- **Grille Cleaning:** If the microphone grille becomes dirty, gently wipe it with a slightly damp cloth. Ensure no moisture enters the microphone capsule.
- **Storage:** When not in use, store the microphone in its provided carrying case to protect it from dust, moisture, and physical damage.
- **Avoid Drops:** While robust, avoid dropping the microphone as this can damage internal components.

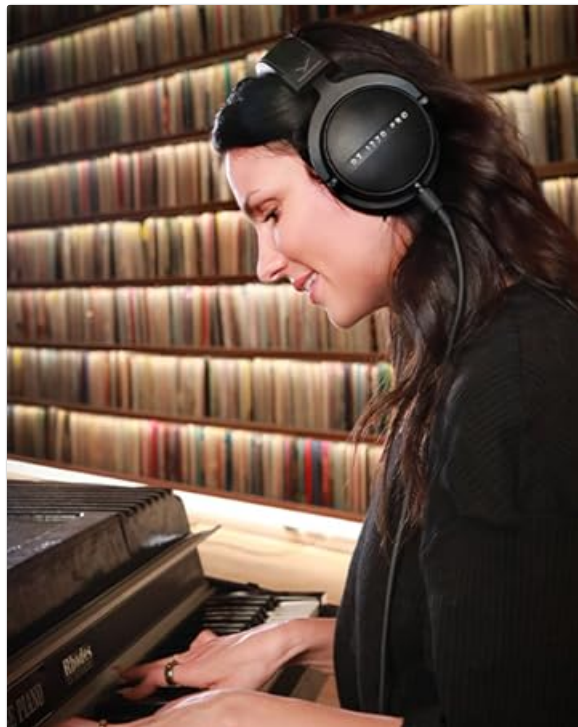


Image: Detailed view of the microphone's internal components during assembly, demonstrating the precision engineering.

7. TROUBLESHOOTING

Problem	Possible Cause	Solution
No Sound Output	Incorrect cable connection	Ensure XLR cable is securely connected at both ends.
	Faulty XLR cable	Test with a different XLR cable.
	Mixer/interface input gain too low	Increase input gain gradually.
	Mute engaged on mixer/interface	Check mixer/interface for mute buttons or settings.
Distorted Sound	Input gain too high	Reduce input gain on mixer/interface.
	Microphone too close to sound source (proximity effect)	Increase distance between microphone and sound source.
Excessive Background Noise	Improper microphone positioning	Re-position microphone to utilize its hypercardioid pattern for maximum isolation.
	Environmental noise	Minimize external noise sources in the recording environment.

8. TECHNICAL SPECIFICATIONS

Transducer Type	Dynamic
Polar Pattern	Hypercardioid (Unidirectional)
Frequency Response	40 Hz - 18 kHz
Audio Sensitivity	58 dB
Impedance	200 Ohm
Signal-to-Noise Ratio	76 dB
Connector	XLR
Material	Metal
Dimensions (L x W x H)	9.3 x 6.6 x 3.55 inches
Weight	1.4 pounds

9. WARRANTY INFORMATION

Beyerdynamic products are covered by a manufacturer's warranty. For detailed information regarding warranty terms, conditions, and registration, please refer to the official Beyerdynamic website or contact their customer support. Keep your proof of purchase for warranty claims.






10. CUSTOMER SUPPORT



For further assistance, technical support, or service inquiries, please visit the official Beyerdynamic website or contact their customer service department. Contact information can typically be found on the Beyerdynamic website's support section.

Official Beyerdynamic Website: www.beyerdynamic.com

© 2023 Beyerdynamic. All rights reserved.

Related Documents - M 201

	<p>Beyerdynamic M 160 Double-Ribbon Microphone User Manual</p> <p>Comprehensive user manual for the Beyerdynamic M 160 dynamic double-ribbon microphone, covering safety instructions, box contents, features, application, technical specifications, installation, operation, maintenance, disposal, troubleshooting, warranty, and conformity information.</p>
	<p>Beyerdynamic DT 150 and DT 190 Professional Headphones and Headset User Manual</p> <p>Comprehensive user manual for Beyerdynamic DT 150 studio headphones and DT 190 professional headset, covering features, connection, operation, maintenance, safety, specifications, and accessories.</p>
	<p>beyerdynamic TG D35 Dynamic Drum Microphone: Product Overview and Specifications</p> <p>Detailed product information for the beyerdynamic TG D35 dynamic drum microphone, including safety guidelines, application notes, technical specifications, and setup instructions.</p>
	<p>Beyerdynamic MM 1 Condenser Measurement Microphone User Manual</p> <p>This user manual provides important information on the use of the Beyerdynamic MM 1 condenser measurement microphone. It covers safety instructions, box contents, features, technical specifications, installation, operation, maintenance, disposal, troubleshooting, warranty, and conformity.</p>
	<p>Beyerdynamic TG L58c Lavalier Microphone - Product Information and Specifications</p> <p>Detailed product information, technical specifications, safety guidelines, and usage instructions for the Beyerdynamic TG L58c omnidirectional condenser lavalier microphone.</p>

<div data-bbox="113 91 137 114"></div> <div data-bbox="193 107 233 136"> beyerdynamic</div> <div data-bbox="178 201 248 219">DT 990 PRO</div> <div data-bbox="172 288 255 333"><small>DT 990 PRO 80 Ω / 16 Ω 100 Hz - 20 kHz 110 dB / 105 dB 100 mm / 100 mm 100 mm / 100 mm 100 mm / 100 mm</small> </div>	<div data-bbox="341 150 1378 179">Beyerdynamic DT 990 PRO Studio Headphones User Manual and Technical Specifications</div> <div data-bbox="341 190 1463 297">Comprehensive user manual and technical specifications for the Beyerdynamic DT 990 PRO open dynamic studio headphones. Learn about features, applications, safety, maintenance, and detailed specs.</div>
---	--