

ToLife TZ-K2

ToLife Air Purifier TZ-K2 User Manual

Brand: ToLife | Model: TZ-K2

1. INTRODUCTION

This manual provides detailed instructions for the safe and efficient operation of your ToLife Air Purifier Model TZ-K2. This air purifier is designed to improve indoor air quality by filtering out various airborne particles and odors. Please read this manual thoroughly before using the appliance and retain it for future reference.



Figure 1: ToLife Air Purifier Model TZ-K2

2. SAFETY INFORMATION

To reduce the risk of fire, electric shock, or injury, please observe the following safety precautions:

- Always unplug the air purifier before moving it, opening the front cover, or performing any maintenance.
- Do not operate the appliance with a damaged cord or plug. If the cord or plug is damaged, contact qualified service personnel.
- Keep the power cord away from heated surfaces.
- Do not use the air purifier in wet environments or near water.
- Ensure proper ventilation around the unit; do not block air inlets or outlets.
- This appliance is not intended for use by persons (including children) with reduced physical, sensory or mental capabilities, or lack of experience and knowledge, unless they have been given supervision or instruction concerning use of the appliance

by a person responsible for their safety.

3. PRODUCT OVERVIEW

3.1 Components

- Main Unit (with fan and motor)
- Front Cover
- 3-Stage Filtration Filter (Pre-Filter, H13 HEPA Filter, Activated Carbon Filter)
- Power Cord

3.2 Control Panel

The control panel is located on the top of the unit and features touch-sensitive buttons and a digital display.



Figure 2: Control Panel with Real-Time Air Quality Indicator

- **ON/OFF Button:** Powers the unit on or off.

- **SPEED Button:** Adjusts fan speed (Low, Medium, High, Auto, Breeze).
- **TIMER Button:** Sets operation timer (2, 4, 6, 8 hours) or activates cycle timer (long press).
- **LIGHT Button:** Turns the display lights on or off for sleep mode.
- **LOCK Button:** Activates/deactivates Child Lock to prevent accidental setting changes.
- **PM 2.5 Display:** Shows real-time air quality readings.
- **Air Quality Indicator Light:** Changes color based on air quality (Green: Good, Yellow: Moderate, Red: Poor).

4. SETUP

4.1 Unpacking and Filter Installation

1. Carefully remove the air purifier from its packaging.
2. Place the unit on a flat, stable surface.
3. Remove the front cover of the air purifier.
4. Take out the filter, which is typically wrapped in plastic to preserve its life. Remove all plastic packaging from the filter.
5. Insert the unwrapped filter back into the unit, ensuring it is correctly oriented (refer to the 'FRONT' indicator on the filter).
6. Replace the front cover securely.

Easy to Replace the Filter

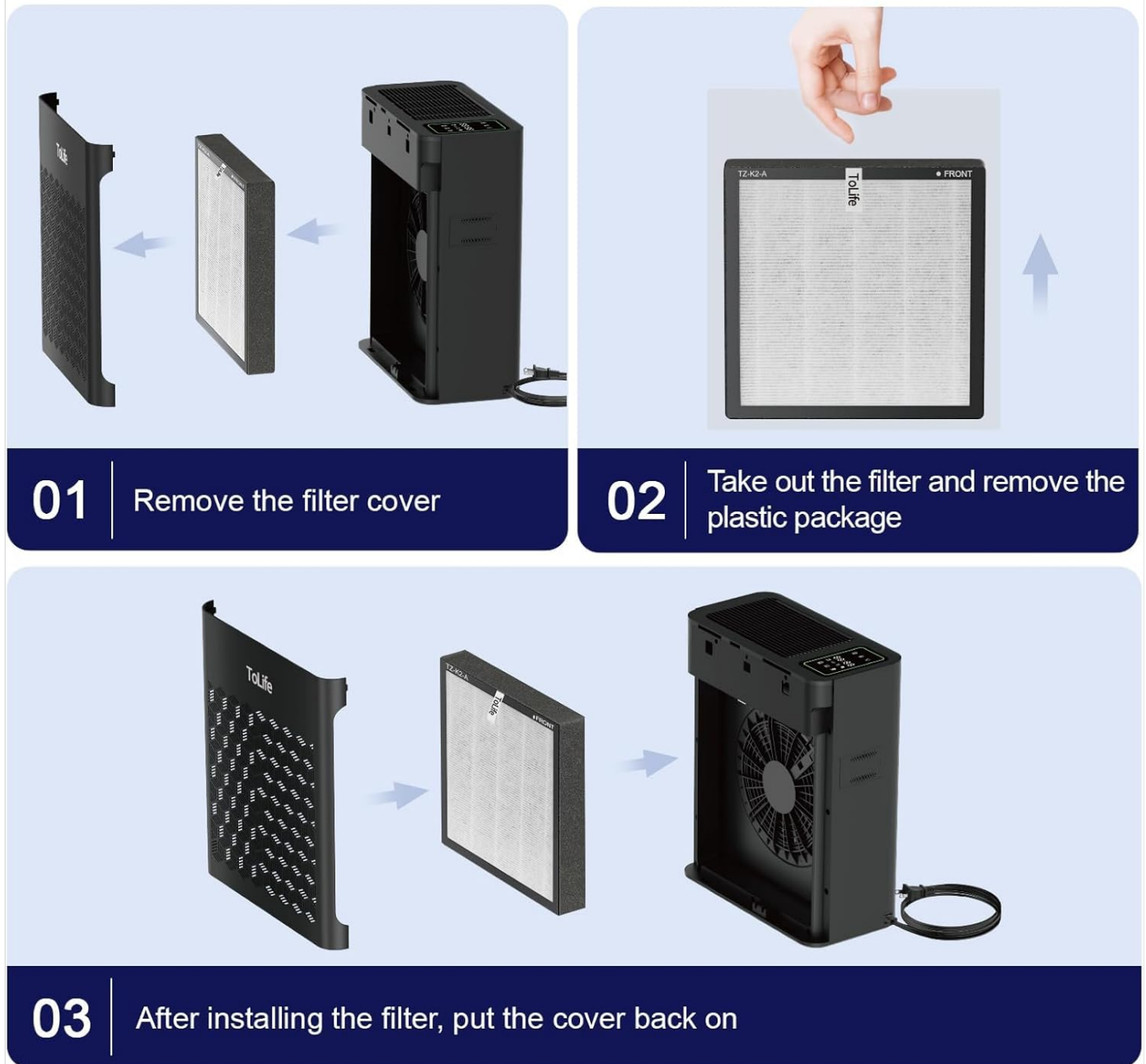


Figure 3: Easy Filter Replacement Steps

5. OPERATING INSTRUCTIONS

5.1 Power On/Off

Plug the power cord into a suitable electrical outlet. Press the **ON/OFF Button** on the control panel to turn the air purifier on or off.

5.2 Air Quality Monitoring and Auto Mode

The air purifier features a real-time PM 2.5 display and an Air Quality Indicator Light. The light changes color to reflect the current air quality:

- **Green:** Good air quality.
- **Yellow:** Moderate air quality.
- **Red:** Poor air quality.

Auto Speed Mode

It automatically adjusts the fan speed according to the air quality.

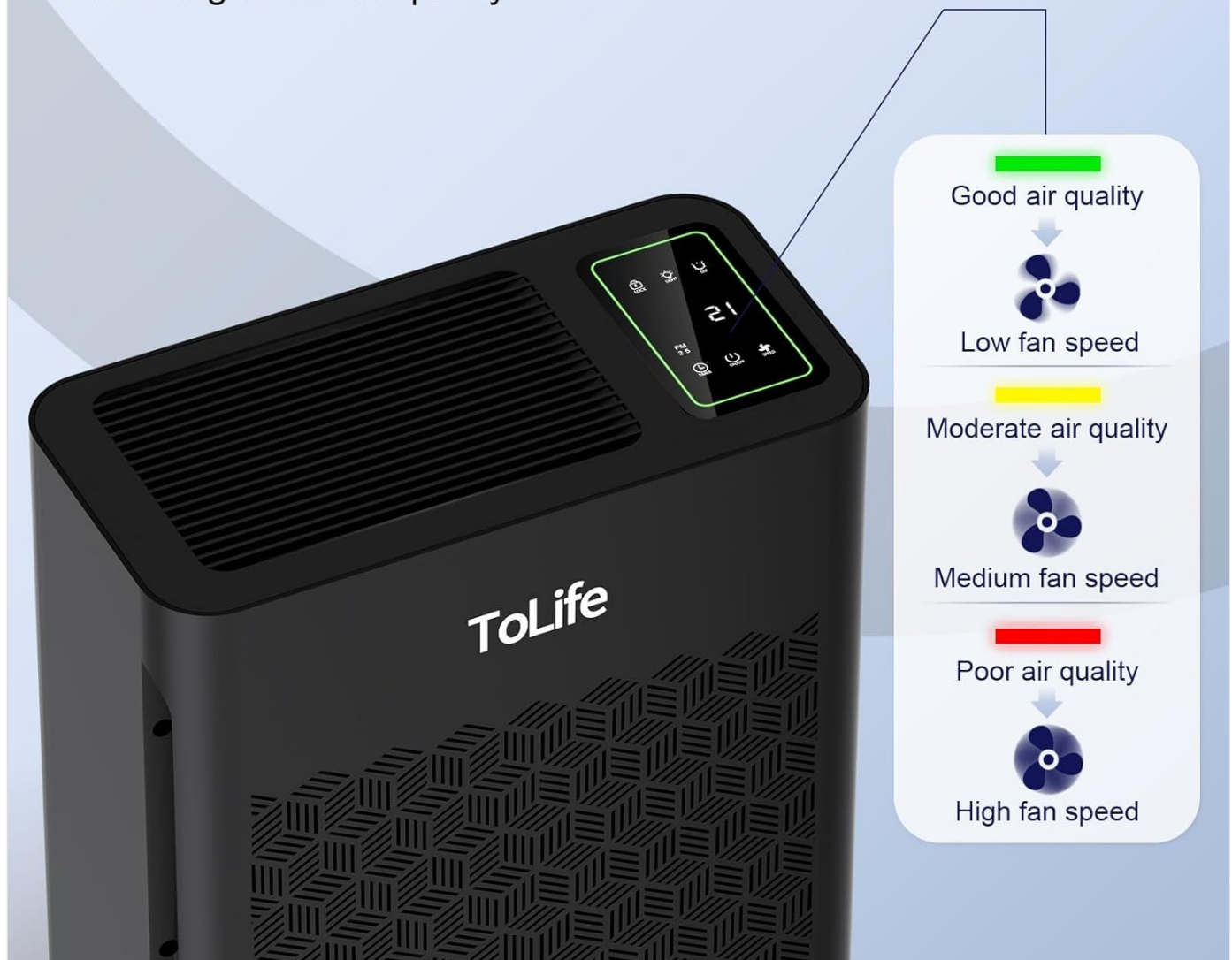


Figure 4: Auto Speed Mode Operation

In **Auto Mode** (selected by pressing the SPEED button until 'Auto' is displayed or indicated), the fan speed will automatically adjust based on the detected air quality to optimize purification.

5.3 Fan Speed Adjustment

Press the **SPEED Button** repeatedly to cycle through the available fan speeds: Low, Medium, High, Auto, and Breeze mode. Breeze mode simulates a natural fluctuating airflow.

5.4 Timer Function

Press the **TIMER Button** to set the desired operating duration: 2, 4, 6, or 8 hours. The unit will automatically turn off after the set time. A long press on the TIMER button activates a recurring daily timer, allowing the air purifier to start and stop at the same time each day.

Timer Settings



Figure 5: Timer Settings

5.5 Sleep Mode / Display Light Control

For undisturbed sleep, press the **LIGHT Button** to turn off the control panel display lights. The unit will continue to operate quietly in the selected mode.

5.6 Child Lock

To prevent accidental changes to settings, especially by children or pets, press and hold the **LOCK Button** for a few seconds to activate the Child Lock. Repeat the action to deactivate it.

Child Lock

Lock the display to prevent children and pets from accidentally changing the settings.



Figure 6: Child Lock Function

6. MAINTENANCE

6.1 Filter Replacement

The air purifier is equipped with a filter replacement indicator. When the filter needs to be replaced, the indicator light will illuminate. Filter lifespan varies based on usage and air quality, but generally, filters should be replaced every 6-8 months. Refer to Section 4.1 for filter replacement steps.

6.2 Cleaning the Unit

- Always unplug the unit before cleaning.
- Wipe the exterior of the air purifier with a soft, dry cloth.
- Do not use abrasive cleaners or solvents.
- The pre-filter can be gently vacuumed to remove larger dust particles between replacements.

7. TROUBLESHOOTING

If you encounter issues with your ToLife Air Purifier, please refer to the following common problems and solutions:

Problem	Possible Cause	Solution
Unit does not turn on.	Power cord not securely plugged in; no power from outlet.	Check power cord connection; try a different outlet.
Poor air purification performance.	Filter is dirty or clogged; unit placed in an unsuitable location.	Replace the filter; ensure unit is placed in an open area, away from obstructions.
Unusual noise.	Filter not installed correctly; foreign object inside unit.	Reinstall filter correctly; unplug and check for foreign objects.

If the problem persists after trying these solutions, please contact ToLife customer support for assistance.

8. SPECIFICATIONS

Feature	Detail
Model Number	TZ-K2
Product Dimensions (L x W x H)	6.5 x 12.99 x 16.34 inches
Weight	8.44 Pounds
Coverage Area (CADR)	Up to 1295 sq ft (refreshes air hourly)
Filtration System	3-Stage (Pre-Filter, H13 HEPA, Activated Carbon)
Noise Level	As low as 23 dB
Power Consumption	45 watts
Voltage	120 volts
Certifications	CARB Certified, ETL Certified, Energy Star Certified, FCC Certified, UL Certified

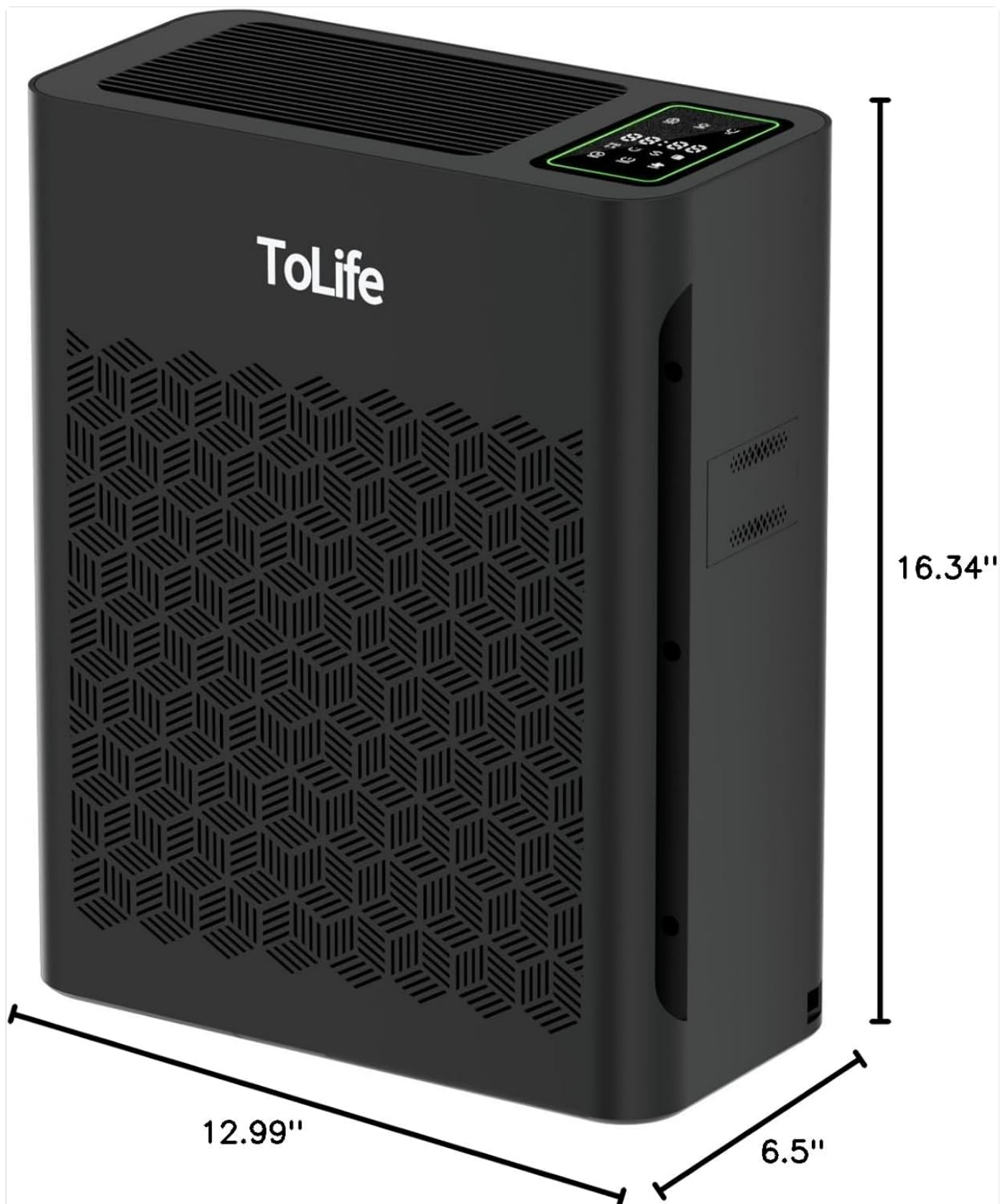






Figure 7: Product Dimensions

9. WARRANTY AND SUPPORT

For warranty information and detailed customer support, please refer to the warranty card included with your product or visit the official ToLife website. You may also find additional support and resources in the [User Manual PDF](#).

Related Documents - TZ-K2

 <p>PLEASE READ THE MANUAL CAREFULLY BEFORE USING ©2018 ToLife, Inc. All Rights Reserved.</p>	<p>ToLife TZ-K2 Air Purifier User Manual and Operating Instructions</p> <p>Comprehensive guide for the ToLife TZ-K2 Air Purifier, covering setup, operation, maintenance, troubleshooting, and warranty information. Learn how to effectively use your air purifier for cleaner indoor air.</p>
 <p>PLEASE READ THE MANUAL CAREFULLY BEFORE USING ©2018 ToLife, Inc. All Rights Reserved.</p>	<p>ToLife Air Purifier TZ-K2 User Manual: Operation, Specifications, and Troubleshooting</p> <p>Comprehensive user manual for the ToLife Air Purifier Model TZ-K2. Includes safety instructions, operating guidance, product specifications, 3-stage filtration details, troubleshooting tips, and warranty information.</p>
 <p>PLEASE READ THE MANUAL CAREFULLY BEFORE USING ©2018 ToLife, Inc. All Rights Reserved.</p>	<p>ToLife TZ-K1 Air Purifier User Manual</p> <p>This manual provides instructions for the ToLife TZ-K1 Air Purifier, including safety information, operating instructions, filter replacement, troubleshooting, and maintenance.</p>
 <p>PLEASE READ THE MANUAL CAREFULLY BEFORE USING ©2018 ToLife, Inc. All Rights Reserved.</p>	<p>ToLife TZ-C2 Dehumidifier User Manual and Specifications</p> <p>Official user manual for the ToLife TZ-C2 dehumidifier, covering safety instructions, specifications, operation, maintenance, troubleshooting, and warranty information.</p>