

REVODATA IPIR-M-POE

REVODATA 5MP PIR POE IP Camera User Manual

Model: IPIR-M-POE

1. INTRODUCTION

This manual provides detailed instructions for the installation, operation, and maintenance of your REVODATA 5MP PIR POE IP Camera. Please read this manual thoroughly before using the product to ensure proper setup and functionality. This camera is designed for indoor security surveillance, offering high-resolution video and advanced features like invisible IR night vision and motion detection.



Figure 1: REVODATA 5MP PIR POE IP Camera (Model IPIR-M-POE)

2. PACKAGE CONTENTS

Verify that all items listed below are included in your package. If any items are missing or damaged, please contact customer support.

- 1 x REVODATA 5MP PIR POE IP Camera
- 1 x User Manual
- 1 x Screws Set for mounting



Real Picture

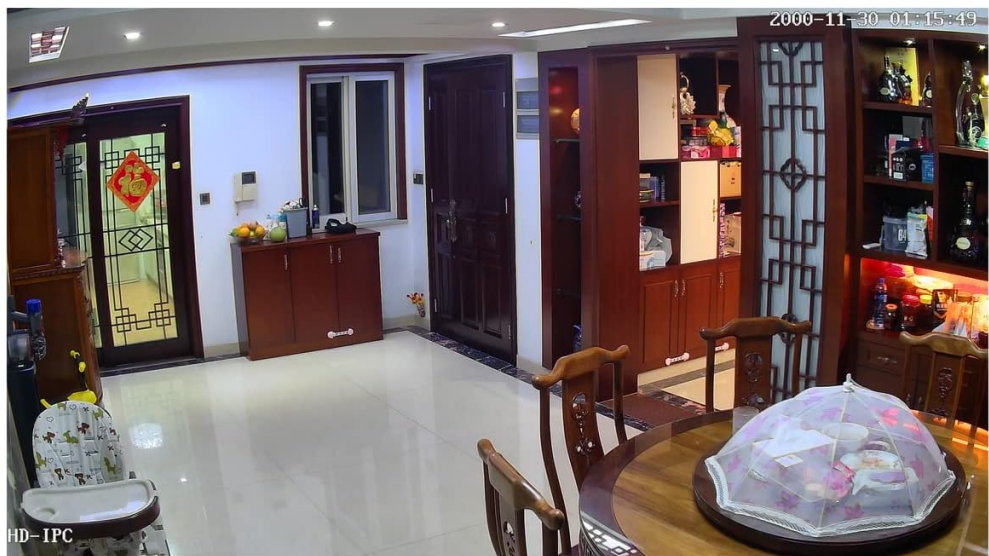


Figure 2: Contents included in the product package.

3. PRODUCT FEATURES

The REVODATA 5MP PIR POE IP Camera offers a range of features for effective indoor surveillance:

- **Ultra HD 5MP Resolution:** Equipped with a 1/3" CMOS Sensor, providing 2880 x 1620P resolution at 20 frames per second for clear and detailed images.
- **Standard 48V POE (802.3af):** Supports Power Over Ethernet, simplifying installation by allowing power and data transmission through a single Cat5/6 cable. An auxiliary power connector is also available for 12V/2A power adapter connection.
- **3.7mm Pinhole Lens:** Features a flat 3.7mm pinhole lens with an approximate 80-degree viewing angle, designed for discreet placement. The camera casing is PIR-shaped but does not include PIR functionality.
- **940nm Invisible IR LEDs:** 18 invisible 940nm infrared LEDs provide night vision without emitting visible red light, ensuring discreet operation in low-light conditions up to 5-10 meters.
- **H.265/H.264 Encoding:** Supports both H.265 and H.264 compression formats, offering efficient storage and bandwidth usage while maintaining image quality.
- **Motion Detection & Email Alarm:** Integrated motion detection triggers alerts and can send email notifications.
- **Remote Viewing:** Access live feeds and recordings via the 'TSEYE' smartphone app (iOS/Android) or VMS software for Windows.

- **Web Interface Support:** Compatible with IE8.0+, Edge, Chrome, Firefox, and Safari browsers.

POE Support

This camera support POE power supply, it will reduce the trouble of cable arrangement. The POE module is built-in in the cable and it meet to 802.3AF standard, it is very stable and reliable for use.



Figure 3: Overview of camera features including 5MP resolution, H.265/H.264 encoding, 3.7mm pinhole lens, 940nm invisible LEDs, and POE support.

HD 5MP POE IP Camera

- *5MP 2880 x 1620*
- *H.265/H.264 Encode*
- *3.7mm Pinhole Lens*
- *940nm Invisible LEDs*
- *Standard 48V PoE*
- *PIR Mini Type*
- *Phone / PC*
- *TSEYE App*



Figure 4: Detailed view of the camera's 940nm invisible IR LED board, which provides discreet night vision.

4. SETUP AND INSTALLATION

4.1 Powering the Camera

The camera primarily uses Power Over Ethernet (POE) for power and data. It requires connection to an 802.3af Standard 48V POE Switch.

- Connect a Cat5/6 Ethernet cable from your 802.3af POE switch to the camera's RJ-45 port.
- Alternatively, the camera has an auxiliary power connector. You can use a 12V/2A power adapter (not included) if a POE switch is not available or preferred.

Motion Detection

Smart Motion Detection. Once detected, alarm notification will send to your phone.



Figure 5: Illustration of POE support, demonstrating how a single cable provides both power and data to the camera.

4.2 Physical Installation

The camera is designed for wall mounting. Use the provided screws set for secure installation.

- Choose a suitable indoor location for optimal surveillance coverage.
- Mount the camera securely using the included screws. Ensure the camera cable is routed appropriately.

Package Including:



Camera



Box



Screws Set



User Manual

Note: This product do not including the power unit.

Figure 6: Detailed view of the camera's dimensions and key components, including the 940nm LED board, 3.7mm pinhole lens, ABC plastic shell, camera cable, camera bracket, auxiliary power supply port, and RJ45 port (supporting POE).

4.3 Initial Network Configuration

The camera has a default static IP address of **192.168.1.108**. For initial setup, ensure your computer is on the same network segment or configure your network to access this IP address. The camera also supports Dynamic IP assignment.

- Connect the camera to your network via a POE switch or router.
- Access the camera's web interface by entering its IP address (e.g., <http://192.168.1.108>) into a compatible web browser (IE8.0+, Edge, Chrome, Firefox, Safari).
- Follow the on-screen prompts to set up a password and configure network settings as needed.

5. OPERATING INSTRUCTIONS

5.1 Remote Viewing (Smartphone App)

The 'TSEYE' app allows you to view live footage and manage your camera from your smartphone.

- Download the 'TSEYE' app from your smartphone's app store (available for iPhone and Android).
- Register an account and log in.

- Add your camera to the app by scanning the QR code or manually entering the device ID.
- Once added, you can access live view, playback recordings, and adjust settings.

VMS View

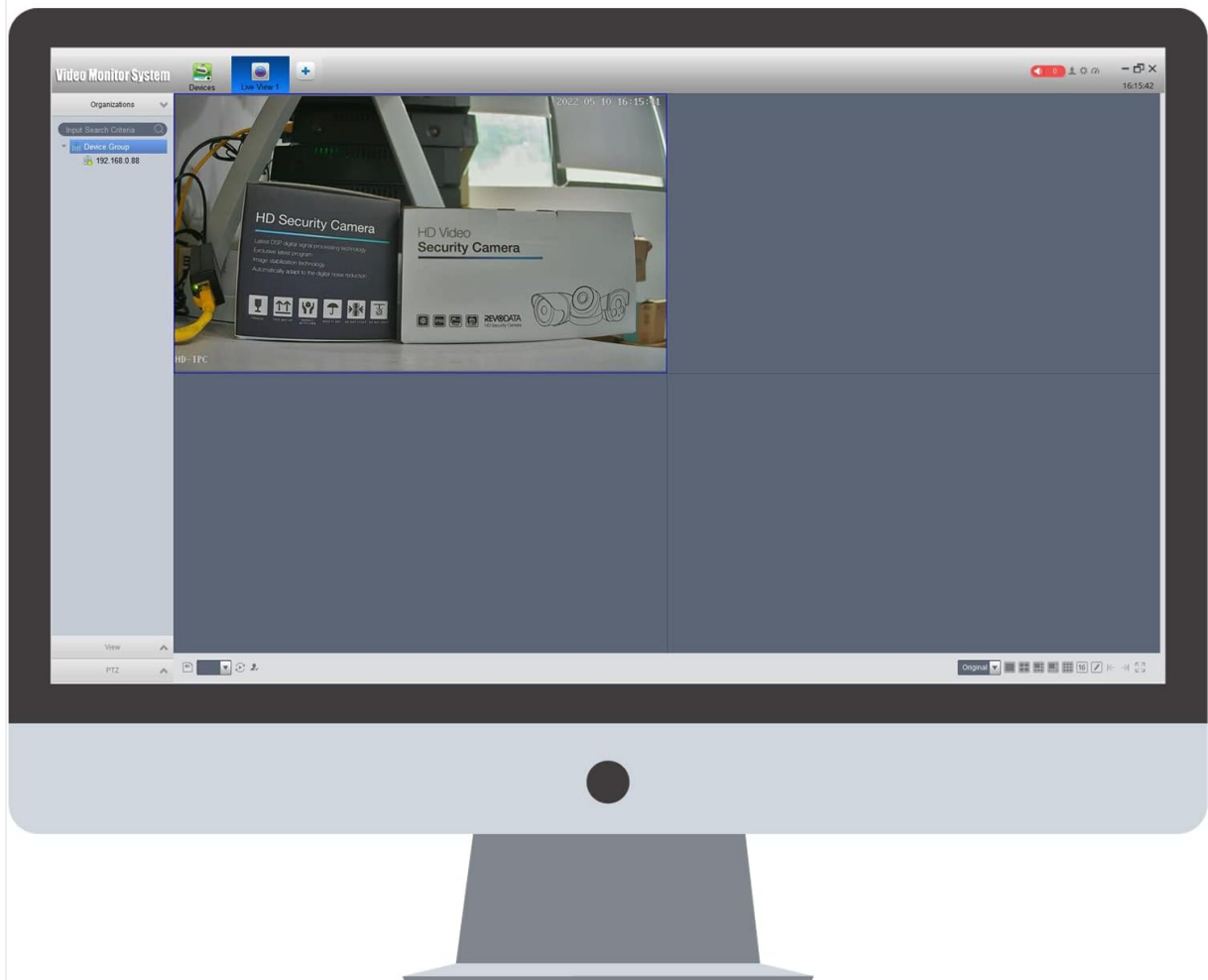


Figure 7: Screenshots illustrating the TSEYE smartphone application interface for remote viewing and the VMS software interface for PC monitoring.

5.2 PC Software (VMS)

For Windows users, VMS software is available for comprehensive monitoring and management.

- Download the VMS software from the REVODATA support website.
- Install the software on your Windows computer. (Note: VMS software is not compatible with MAC OS or Linux).
- Add your camera to the VMS software using its IP address or device ID.
- Utilize the VMS software for multi-camera viewing, recording management, and advanced configurations.

5.3 Motion Detection

The camera features built-in motion detection to alert you to activity.

- Access the camera's settings via the web interface or the TSEYE app.
- Navigate to the motion detection section.
- Configure detection zones, sensitivity levels, and alarm actions (e.g., email notifications).



Figure 8: Example of a smartphone notification for motion detection, showing an alert from the TSEYE app and a visual representation of motion being detected within the camera's view.

5.4 Day & Night Vision

The camera automatically switches between day (color) and night (black and white) modes based on ambient light conditions, utilizing its invisible IR LEDs for clear night vision.

TSEye App View

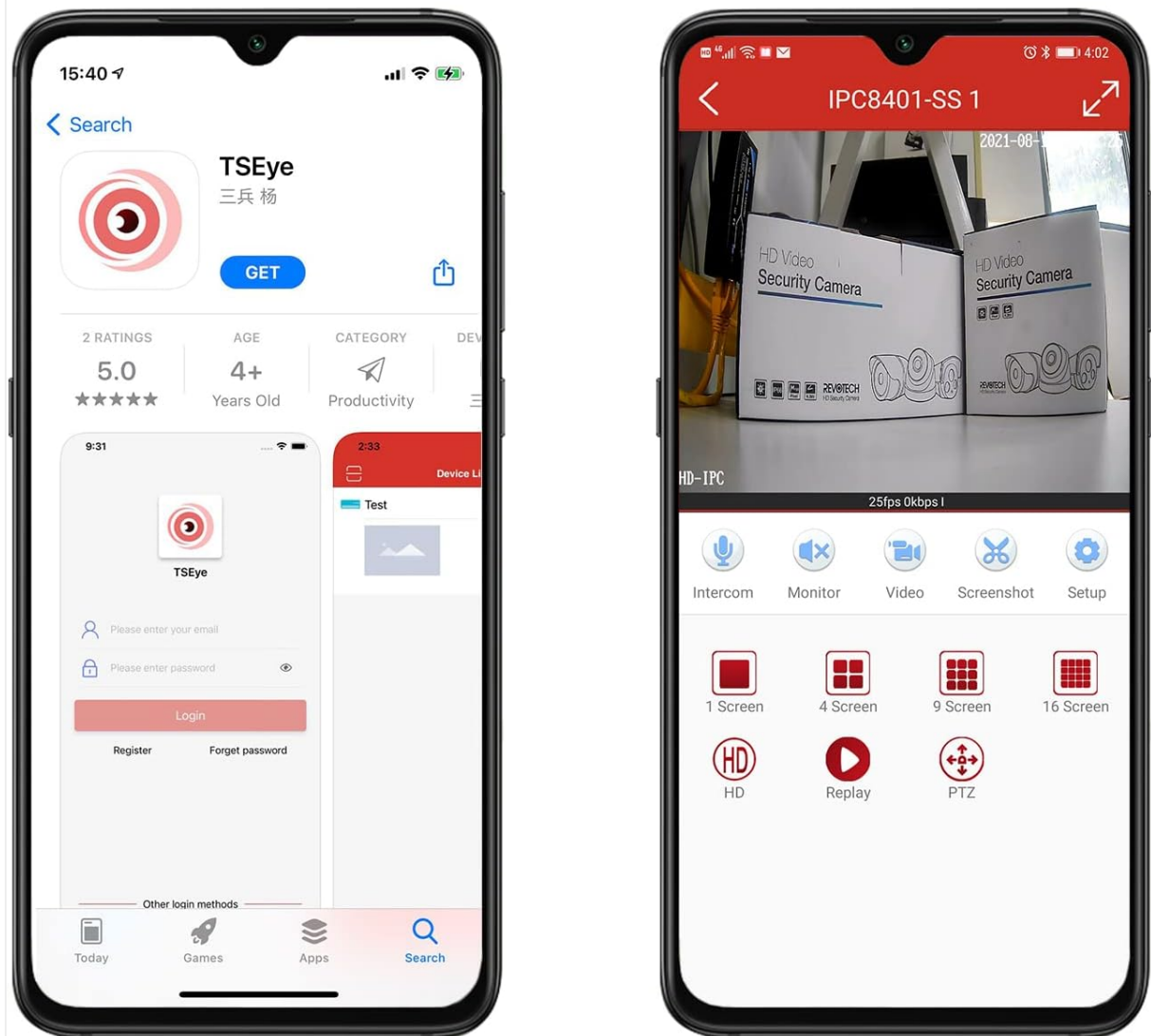


Figure 9: A comparison demonstrating the camera's clear image quality during the day (color) and its effective black and white night vision using invisible IR LEDs.

6. MAINTENANCE

To ensure optimal performance and longevity of your camera, follow these maintenance guidelines:

- **Cleaning:** Gently wipe the camera lens and body with a soft, dry cloth. Avoid using harsh chemicals or abrasive materials that could scratch the lens or casing.
- **Firmware Updates:** Periodically check the REVODATA support website for firmware updates. Keeping your camera's firmware up-to-date can improve performance and add new features.
- **Environmental Conditions:** Ensure the camera is operated within its specified temperature range (-25°C to 60°C) and protected from direct moisture.

7. TROUBLESHOOTING

This section addresses common issues you might encounter with your REVODATA IP Camera.

- **No Power/No Image:**

- Ensure the camera is connected to an 802.3af Standard 48V POE Switch.
- If using an auxiliary power adapter, confirm it is a 12V/2A supply and properly connected.
- Check all cable connections for secure fit.

- **Cannot Access Camera via IP:**

- Verify your computer is on the same network segment as the camera (default IP: 192.168.1.108).
- Ensure your network firewall is not blocking access to the camera's IP address or ONVIF port (8088).
- Try resetting the camera to factory defaults (refer to advanced settings in the web interface, if available).

- **Image Quality Issues:**

- If your NVR does not support 5MP or H.265, you can change the camera's resolution to 1080P (2MP) and encoding to H.264 via the camera's web interface.
- Clean the camera lens if the image appears blurry.

- **Motion Detection Recording Not Working with NVR:**

- While the camera supports internal motion detection and email alarms, compatibility with NVR motion recording features can vary. Ensure your NVR is fully compatible with the camera's ONVIF profile and motion detection protocols.
- Some NVRs may require specific configurations or may not fully support motion-triggered recording from all third-party IP cameras.

8. SPECIFICATIONS

Model	IPIR-M-P-TS-X
Resolution	5.0 Megapixel (2880 x 1620P) @ 20fps
Sensor	1/3" CMOS (FH8852V310+GC5063)
Min Illumination	0.1 Lux @(F1.2, AGC ON)
Lens	3.7mm Pinhole Lens
Lens Interface Type	M12
Shutter	1/25 seconds - 1/100,000 seconds
Compression Format	H.265 / H.264
ONVIF Port	8088
Storage	NVR or Computer
IP Address	Static (Default 192.168.1.108) / Dynamic
Smart Alarm	Motion detection, Email alarm
Supported Protocols	HTTP, TCP/IP, RTSP, RTP, UPNP, SMTP, DHCP, DDNS, DNS, FTP, NTP
Ethernet	10M/100M mbps (RJ-45)
Operating Temperature	-25°C ~ 60°C
Power Supply	POE (802.3af Standard) or 12V DC (auxiliary)




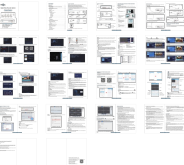
Infrared Lamp	18 x 940nm Invisible LEDs
Night Vision Distance	5-10m
Material	ABS Plastic Shell
Dimensions	10.2cm x 6cm x 2.7cm (4.02 x 2.36 x 1.06 inches)
Weight	0.2kg (6.3 ounces)



9. SUPPORT

For further assistance, please refer to the following resources:

- **Online Resources:** Visit the official REVODATA website for FAQs, updated manuals, and software downloads.
- **Customer Service:** Contact REVODATA customer support for technical assistance or warranty inquiries. Refer to the product packaging or official website for contact details.

Related Documents - IPIR-M-POE

 <p>HD IP CAMERA USER MANUAL</p> <p>Technical Support: support@simicam.com It is recommended to use Windows 8 or later. Easy P2P monitoring on smart phone APP (Android/iOS) ONVIF Compatible, Easy access to Network NVR and Video wall display system. Optional PoE, Audio lens, Power supply.</p> <p><small>Note: This manual may contain some incorrect information, even though it is compiled with our careful proofreading. The new version will be added to the website without notice. Your valuable advice is highly appreciated.</small></p>	<p>SIMICAM HD IP Camera User Manual: Setup and Configuration</p> <p>User manual for SIMICAM HD IP Cameras, detailing installation, network setup, IP configuration, motion detection, email alerts, and mobile app usage with the Watilon app.</p>
<p>POE Security Camera System Quick User Guide</p>  <p><small>For more items information, please visit: www.panoeagle.com</small></p>	<p>PANOEAGLE POE Security Camera System Quick User Guide</p> <p>A quick user guide for PANOEAGLE POE security camera systems, covering NVR connection, camera configuration, mobile app usage, and frequently asked questions. Learn how to set up and manage your IP cameras with Hikvision and Dahua NVRs.</p>
<p>Camera network connection and settings</p>  <p><small>1. Prepare the network and camera for the camera (NVR) software.</small></p> <p><small>2. Please keep the computer and camera on the same LAN. Please use a network cable to connect, do not use Wi-Fi.</small></p> <p><small>3. After installation, open the software and click "Network" button.</small></p>	<p>Hikvision IP Camera Network Connection and Settings Guide</p> <p>A comprehensive guide for setting up Hikvision IP cameras. It covers downloading and installing the AjDev software, connecting the camera via a wired network, using the software to search for and configure the camera's IP address, and accessing the camera's web interface for live viewing and further settings. Includes descriptions of network diagrams and software interfaces.</p>
	<p>Hiseeu Security Camera System User Manual and Guide</p> <p>Comprehensive user manual for Hiseeu Security Camera Systems, detailing features like 5MP/1080p resolution, PoE, 2-way audio, face/human detection, night vision, motion alerts, remote access, and H.265+ recording. Includes setup and connectivity information.</p>

 The image shows the cover of the VEEZOOM PoE Camera User Manual. It features the VEEZOOM logo at the top left, followed by the text 'User Manual' and 'VEEZOOM PoE Camera'. Below the text is a photograph of two white, bullet-style security cameras mounted on a wall. The number '101' is visible at the bottom left of the cover.	<p>VEEZOOM PoE Camera User Manual</p> <p>User manual for the VEEZOOM PoE Camera (Models WS-N151HB, WS-N151BS), covering setup, installation, app usage, live view, recording, playback, app settings, camera settings, SD card management, and troubleshooting.</p>
 The image shows the cover of the Reolink RLC-810PA 4K PoE Bullet Security Camera: Operational Instruction Manual. It features the Reolink logo at the top left, followed by the text 'Operational Instruction Manual' and 'RLC-810PA 4K PoE Bullet Security Camera'.	<p>Reolink RLC-810PA 4K PoE Bullet Security Camera: Operational Instruction Manual</p> <p>Get detailed operational instructions for the Reolink RLC-810PA 4K PoE Bullet Security Camera. This guide covers setup, installation, troubleshooting, specifications, and compliance information.</p>