

Rust-Oleum 376857-6PK

Rust-Oleum Stops Rust Custom Spray 5-in-1 Spray Paint Instruction Manual

Brand: Rust-Oleum

Model: 376857-6PK



1. PRODUCT OVERVIEW

The Rust-Oleum Stops Rust Protective Enamel with Custom Spray 5-in-1 technology offers a versatile spray paint experience. This advanced formula provides enhanced corrosion resistance and color retention, making it suitable for various projects. The innovative Custom Spray 5-in-1 dial allows users to select from five distinct spray patterns for precise application.



Image: Rust-Oleum Stops Rust Custom Spray 5-in-1 Flat Brown Spray Paint (6-pack).

Key Features:

- **Custom Spray 5-in-1 Dial:** Offers five distinct spray patterns for ultimate control and superior results.
- **Advanced Oil-Based Formula:** Delivers 30% greater corrosion resistance and enhanced color retention compared to standard Stops Rust formulas.
- **Quick Drying:** Dries to touch in 2-4 hours.
- **Coverage:** Each 12 oz can covers approximately 6-10 sq. ft.
- **360° Any-Angle Spray Technology:** Allows for effortless application from any angle.
- **Flat Finish:** Minimizes surface imperfections for a smooth appearance.

2. SAFETY INFORMATION

Always prioritize safety when using spray paint. This product is flammable and should be used with caution.

- **Ventilation:** Use in a well-ventilated area. Avoid breathing vapors.
- **Eye Protection:** Wear safety glasses or goggles to protect eyes from paint mist.
- **Skin Protection:** Wear gloves to prevent skin contact.
- **Respiratory Protection:** If ventilation is inadequate, wear an appropriate respirator.
- **Flammability:** Keep away from heat, sparks, open flames, and hot surfaces. Do not smoke while using.
- **Storage:** Store in a cool, dry place away from direct sunlight and extreme temperatures.
- **Disposal:** Dispose of empty cans and unused paint according to local regulations.



Image: Recommended safety and preparation items.

3. PREPARATION AND SETUP

Surface Preparation:

Proper surface preparation is crucial for optimal adhesion and finish quality. Ensure the surface is clean, dry, and free of loose rust, dirt, oil, and grease. Lightly sand glossy surfaces for better adhesion. For bare metal or wood, a primer may be recommended for best results and extended durability.



Image: Paint adhesion on wood and metal surfaces.

Can Preparation:

1. Shake the can vigorously for one minute after the mixing ball begins to rattle. Continue shaking occasionally during use.
2. Test spray on a scrap piece of material to ensure proper color and spray pattern.

4. OPERATING INSTRUCTIONS: CUSTOM SPRAY 5-IN-1 DIAL

The Custom Spray 5-in-1 dial provides five unique spray patterns, allowing you to adapt to different project needs. Rotate the dial on the top of the can to select the desired spray pattern.

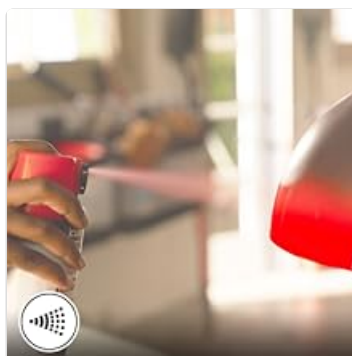


Image: Custom Spray 5-in-1 Dial Features.

Spray Patterns:

1. High Output

Ideal for large, rounded surfaces. Provides a wide, fast-covering spray.



High Output in use.

2. Standard

A comfortable and timeless spray experience, suitable for general applications.



Standard spray in use.

3. Low Output

Excellent for detailed work, corners, and hard-to-reach areas, minimizing drips and runs.



Low Output spray in use.

4. Vertical Fan

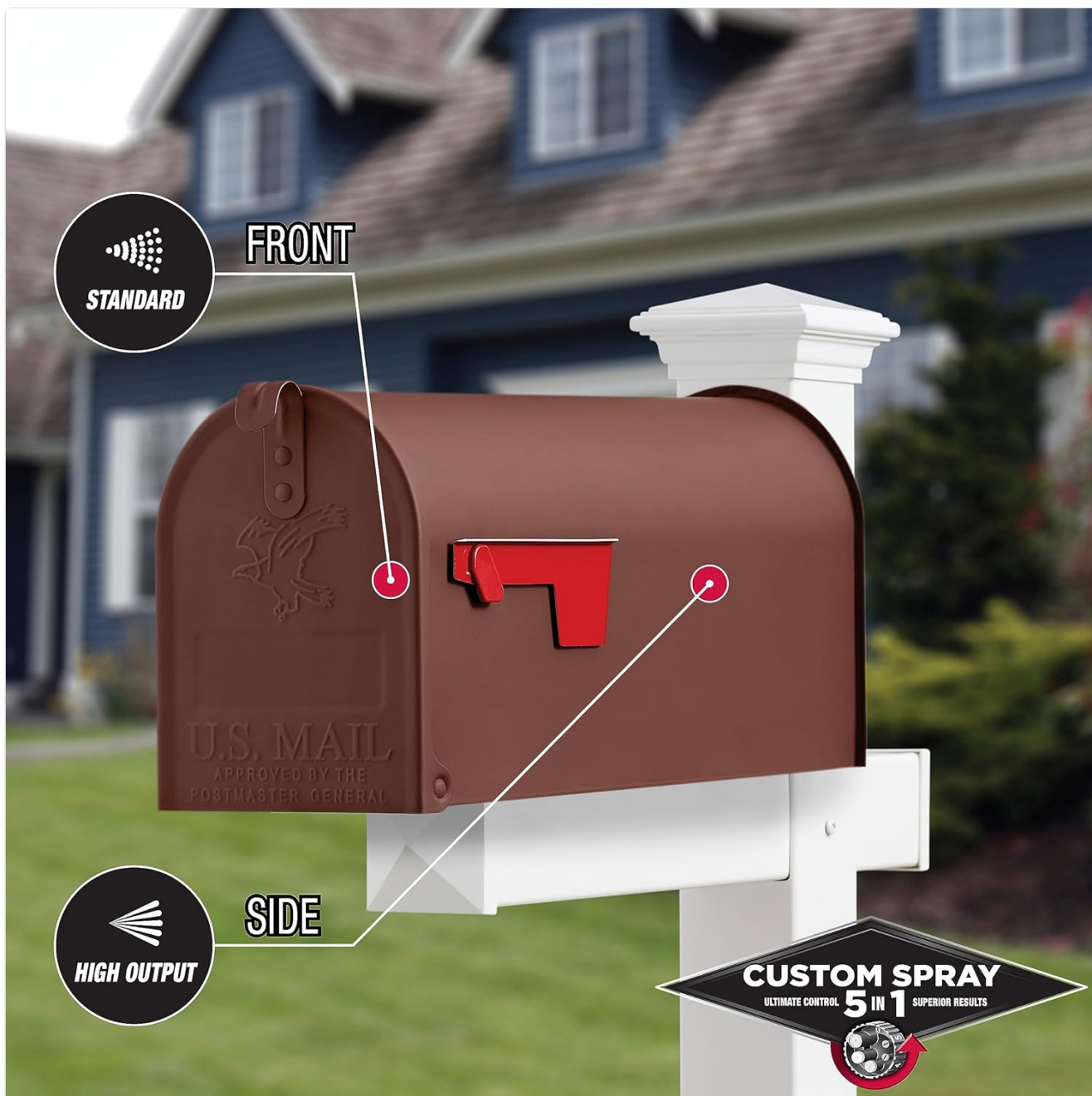
Great for long, flat surfaces, providing an even vertical spray pattern.



Vertical Fan application example.

5. Horizontal Fan

Ideal for tall, flat surfaces, delivering an even horizontal spray pattern.



Horizontal Fan application example.

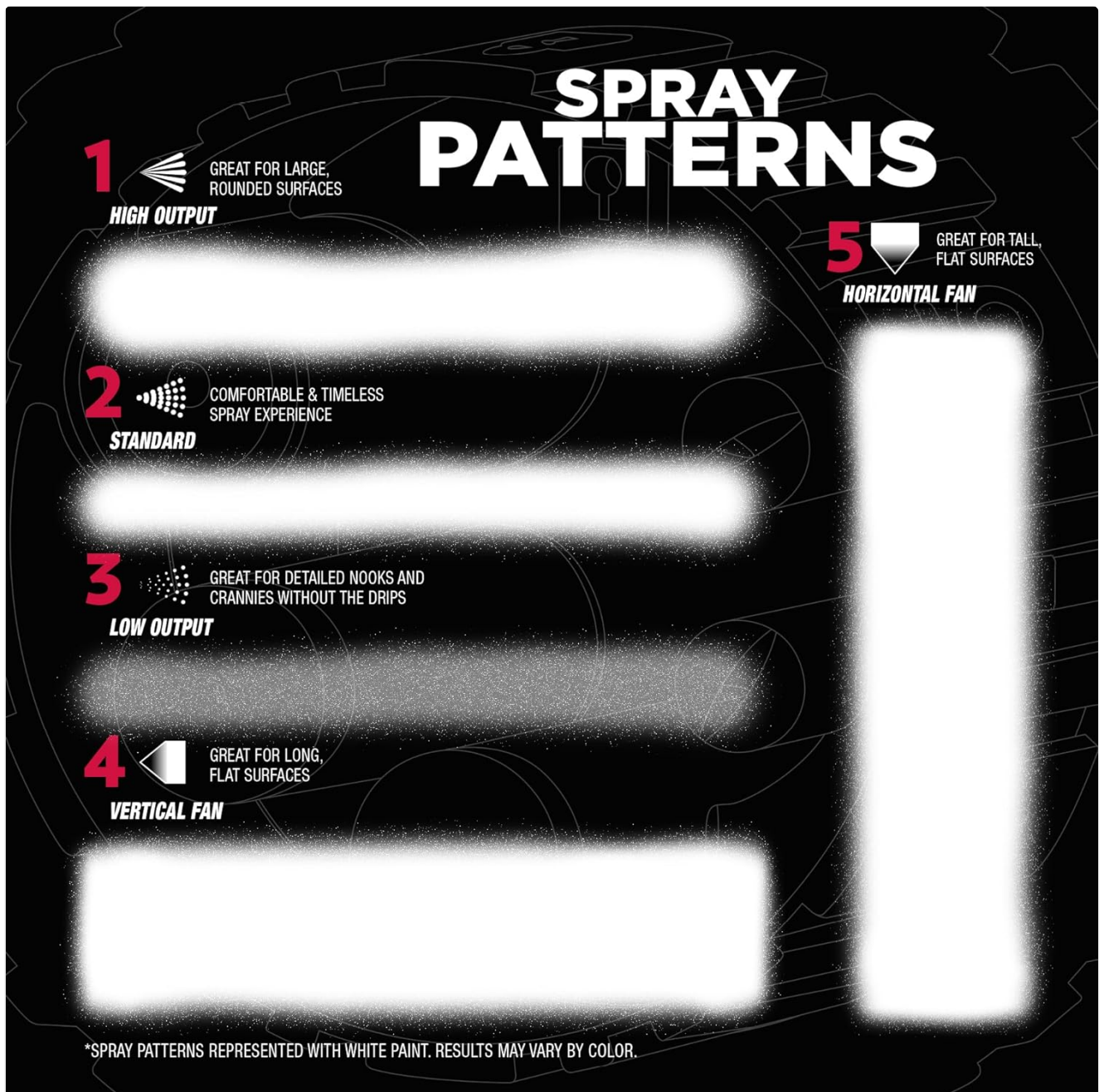


Image: Visual representation of spray patterns.

Hold the can upright 10-16 inches from the surface and spray in a steady, back-and-forth motion, slightly overlapping each stroke. Apply two or more light coats a few minutes apart rather than one heavy coat to avoid drips and runs.

5. MAINTENANCE AND STORAGE

Nozzle Cleaning:

After each use, turn the can upside down and press the actuator button for 2-3 seconds to clear the valve. This prevents clogging and ensures the nozzle is ready for the next use. If the nozzle clogs, remove and clean it with mineral spirits. Do not insert pins or other objects into the stem.

Storage:

Store the can in a cool, dry, well-ventilated area. Ensure the Custom Spray dial is turned to the "Lock/Off" position before storing. Keep away from direct sunlight, heat sources, and freezing temperatures.

6. TROUBLESHOOTING

Problem	Possible Cause	Solution
Uneven spray or sputtering	Insufficient shaking; clogged nozzle; low temperature.	Shake can vigorously for 1 minute. Clean nozzle as per maintenance. Warm can to room temperature.
Drips or runs	Too much paint applied; can held too close to surface; incorrect spray pattern for task.	Apply lighter, multiple coats. Hold can 10-16 inches from surface. Select a lower output or fan pattern for detailed areas.
Poor adhesion	Improper surface preparation (dirty, greasy, or glossy surface).	Ensure surface is clean, dry, and properly sanded. Use a primer if necessary.
Nozzle does not work as advertised (e.g., restricted flow drips)	Internal mechanism issue; dried paint in the nozzle.	Ensure the can was inverted and sprayed after previous use. If issue persists after cleaning, the can may be defective.

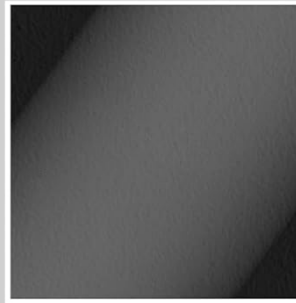
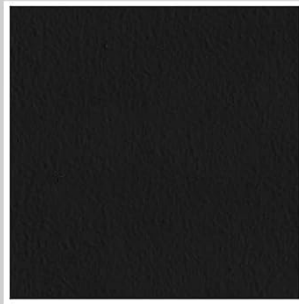
7. PRODUCT SPECIFICATIONS

Specification	Detail
Brand	Rust-Oleum
Model Name	Custom Spray 5-in-1
Model Number	376857-6PK
Color	Flat Brown
Finish Type	Flat
Size	12 Ounce (Pack of 6)
Item Volume	12 Fluid Ounces per can
Paint Type	Enamel
Specific Uses	Interior/Exterior
Surface Recommendation	Metal, Wood
Special Features	Chip Resistant, Fade Resistant, Fast-Drying, Rust Resistant, Scratch Resistant
Full Cure Time	4 Hours
Coverage	6-10 square feet per can
Item Weight	6.12 pounds (for 6-pack)
Product Dimensions	8.38 x 5.69 x 8.38 inches (for 6-pack)

SHEEN GUIDE*

FLAT
no shine

SATIN
medium shine



SEMI-GLOSS
medium-high shine

GLOSS
high shine

*Colors may not be available in all sheens

Image: Rust-Oleum Sheen Guide.



30% CORROSION RESISTANCE
GREATER* COLOR RETENTION

*The advanced Stops Rust Formula provides 30% greater corrosion resistance and color retention compared to original matching Stops Rust colors with standard tip

Image: Enhanced corrosion resistance and color retention.

8. WARRANTY AND SUPPORT

For detailed product information, safety data sheets, or specific warranty inquiries, please refer to the official Rust-Oleum resources.

A user guide is available for download:





[Download User Guide \(PDF\)](#)

For further assistance, visit the official Rust-Oleum website or contact their customer support.

© 2024 Rust-Oleum. All rights reserved.

This manual is for informational purposes only. Always refer to the product label for the most accurate and up-to-date instructions and safety warnings.

Related Documents

	<p>Rust-Oleum Stops Rust Textured Sprays: Technical Data and Application Guide</p> <p>Technical data and application guide for Rust-Oleum Stops Rust Textured Sprays, detailing product uses, preparation, application instructions, dry times, cleanup, and physical properties for various textured spray paint finishes.</p>
	<p>Rust-Oleum Furniture Transformations Low VOC System Technical Data and Application Guide</p> <p>Comprehensive technical data and application guide for Rust-Oleum Furniture Transformations Low VOC system, detailing surface preparation, deglosser, bond coat, decorative glaze, and topcoat application for a durable furniture finish.</p>
	<p>Rust-Oleum Cabinet Transformations: Technical Data and Application Guide</p> <p>Comprehensive technical data and step-by-step application guide for Rust-Oleum Cabinet Transformations, a DIY cabinet coating system for transforming wood, laminate, and metal cabinets. Includes product details, preparation, application, and physical properties.</p>
	<p>Rust-Oleum Broad Spectrum Disinfectant PRO (CC 128OZ 4PK) - Safety Data Sheet</p> <p>Safety Data Sheet for Rust-Oleum Broad Spectrum Disinfectant PRO (Product ID: 626001). Provides detailed information on identification, hazards, first aid, handling, storage, and regulatory compliance.</p>