

Dyson 475605-01

Dyson Supersonic™ Origin Hair Dryer Instruction Manual

Model: 475605-01

1. INTRODUCTION

The Dyson Supersonic™ Origin hair dryer is engineered for fast drying without extreme heat damage. It features precise airflow and intelligent heat control to protect hair's natural shine.



Image: The Dyson Supersonic™ Origin hair dryer with its included styling concentrator attachment.

Key Features

- **Fast Drying:** Utilizes Air Multiplier™ technology for high-pressure, high-velocity airflow.
- **No Extreme Heat Damage:** Intelligent heat control measures air temperature over 40 times per second to prevent damage.
- **Controlled Styling:** Designed for precise styling with a single attachment.
- **Enhanced Hair Health:** Helps increase smoothness, shine, and decrease frizz and flyaways.

2. WHAT'S IN THE BOX

Verify that all components are present upon unboxing.

- Dyson Supersonic™ Origin Hair Dryer
- Styling Concentrator Attachment

In the box



Image: The Dyson Supersonic™ Origin hair dryer and its styling concentrator, as packaged in the box.

3. SETUP

1. **Unpack:** Carefully remove the hair dryer and all accessories from the packaging.
2. **Inspect:** Check the device and cord for any signs of damage. Do not use if damaged.
3. **Attach Concentrator:** The Styling Concentrator attaches magnetically to the front of the hair dryer. Align the concentrator with the nozzle and it will snap into place.
4. **Power Connection:** Plug the power cord into a suitable electrical outlet. Ensure the voltage matches your region's standard.

4. OPERATING INSTRUCTIONS

The Dyson Supersonic™ Origin hair dryer features intuitive controls for speed, heat, and a cold shot function.

Controls Overview

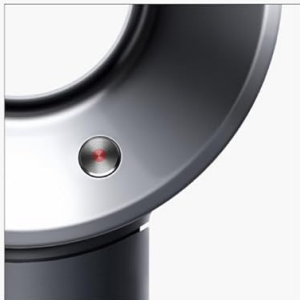


3 precise speed settings

High - for fast drying and styling

Medium - for regular drying

Low - for diffusing



4 heat settings

Fast drying and styling

Regular drying

Cooler drying



Cold shot

Cold shot to set your style

Image: Detailed view of the speed, heat, and cold shot buttons on the Dyson Supersonic™ Origin hair dryer handle.

- **Power Button:** Located on the handle, press to turn the dryer on or off.
- **Speed Settings (Left Button):**
 - High: For fast drying and styling.
 - Medium: For regular drying.
 - Low: For diffusing (though this model comes with a concentrator, low speed can be used for gentle drying).
- **Heat Settings (Right Button):**
 - Fast drying and styling (highest heat).
 - Regular drying (medium heat).
 - Cooler drying (low heat).
 - Cold shot (press and hold for continuous cold air).
- **Cold Shot Button:** Press and hold to instantly switch to cold air to set your style.

General Usage Guidelines

1. **Preparation:** Start with clean, towel-dried hair.

2. **Rough Drying:** For initial drying, use a higher speed and heat setting without the concentrator to quickly remove excess water from roots.
3. **Styling with Concentrator:**
 - Attach the Styling Concentrator.
 - Section your hair.
 - Direct the airflow downwards along the hair shaft using a round brush for smoothness and volume, or a flat brush for a straighter finish.
 - Use appropriate heat and speed settings for your hair type and desired style.
4. **Setting the Style:** Finish each section with a cold shot to lock in the style and add shine.

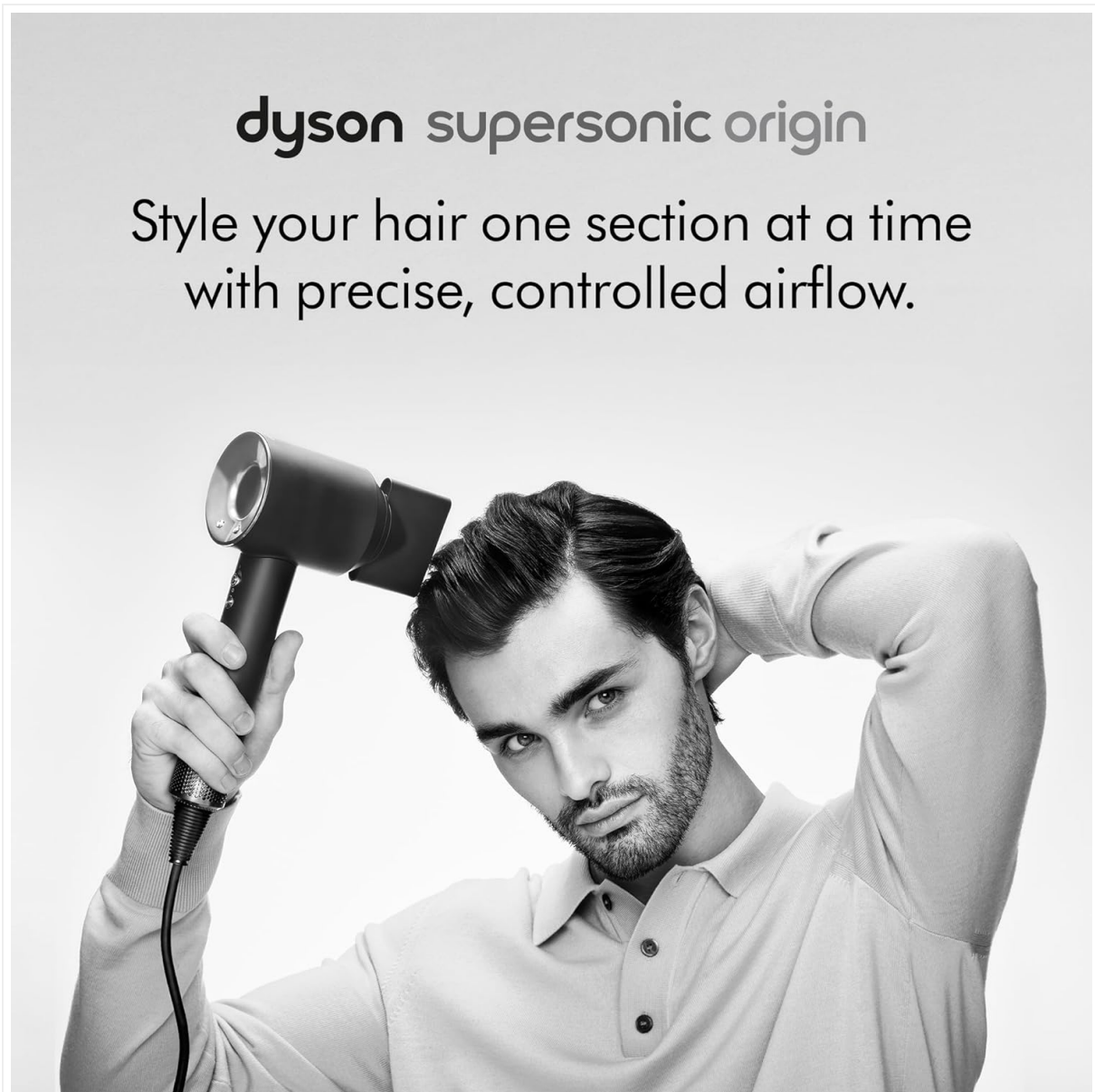


Image: A user demonstrating styling hair section by section with the Dyson Supersonic™ Origin hair dryer and its concentrator.

5. MAINTENANCE

Regular maintenance ensures optimal performance and longevity of your Dyson Supersonic™ Origin hair dryer.

1. **Cleaning the Filter Cage:**

- Unplug the appliance from the mains electricity supply.
 - Hold the handle of the appliance and twist the filter cage anti-clockwise to release it.
 - Pull down to remove the filter cage.
 - Wipe the filter mesh with a dry cloth to remove any dust or debris. Do not use water.
 - Push the filter cage back into position and twist clockwise until it clicks securely into place.
2. **Cleaning the Attachments:** Wipe the Styling Concentrator with a soft, damp cloth. Ensure it is completely dry before reattaching.
3. **Cord Care:** Do not wrap the cord tightly around the appliance. Store it loosely to prevent damage.

6. TROUBLESHOOTING

If you encounter issues with your Dyson Supersonic™ Origin hair dryer, refer to the following common solutions.

Problem	Possible Cause	Solution
No power	Not plugged in, power outlet issue, or internal fault.	Ensure the plug is fully inserted. Test the outlet with another device. If still no power, contact customer support.
Reduced airflow or overheating	Blocked filter.	Clean the filter cage as described in the Maintenance section.
Unusual noise	Debris in the motor, or internal component issue.	Ensure the filter is clean. If the noise persists, discontinue use and contact customer support.

For issues not listed here, or if solutions do not resolve the problem, please contact Dyson customer support.

7. SPECIFICATIONS

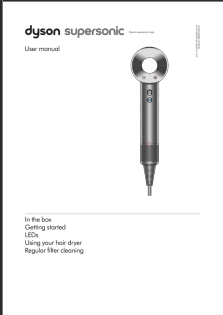
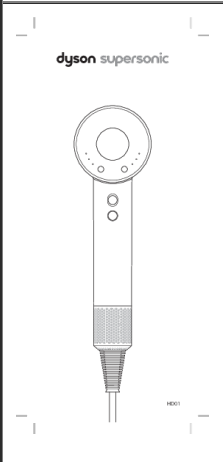
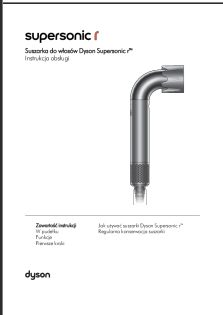
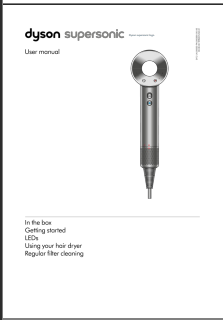
Brand	Dyson
Model Number	475605-01
Product Dimensions	10 x 8 x 5 inches
Item Weight	1.8 Pounds
Color	Black/Nickel
Material	Aluminum, Ceramic, Polycarbonate
Wattage	1600 watts
Power Source	Corded Electric
UPC	885609032511
GTIN	885609032511


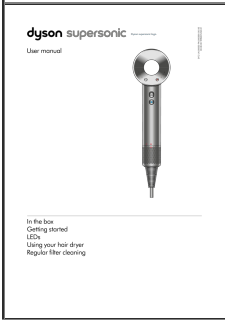
8. WARRANTY AND SUPPORT

Dyson products typically come with a manufacturer's warranty. For specific warranty details, registration, or technical support, please refer to the official Dyson website or contact their customer service directly.

You can find more information and support resources on the official Dyson website: www.dyson.com

Related Documents - 475605-01

 <p>The image shows the cover of the 'dyson supersonic User manual'. It features a black and white photograph of the hair dryer. Below the image, there is a list of topics covered in the manual: 'In the box', 'Getting started', 'LEDs', 'Using your hair dryer', and 'Regular filter cleaning'.</p>	<p>Dyson Supersonic Hair Dryer User Manual</p> <p>Comprehensive user manual for the Dyson Supersonic hair dryer, covering setup, usage, LED indicators, attachments, and filter cleaning.</p>
 <p>The image shows the cover of the 'dyson supersonic' user manual for model HD01. It features a black and white photograph of the hair dryer. The model number 'HD01' is visible at the bottom right of the image.</p>	<p>Dyson Supersonic Hair Dryer (HD01) User Manual and Safety Guide</p> <p>Comprehensive user manual for the Dyson Supersonic hair dryer (model HD01). Includes detailed safety instructions, usage guides, features explanation, maintenance tips, and warranty information across multiple languages.</p>
 <p>The image shows the cover of the 'supersonic r™' instruction manual. It features a black and white photograph of the hair dryer. Below the image, there is a list of topics covered in the manual: 'Zawartość instrukcji', 'Wprowadzenie', 'Funkcje', 'Pierwsze użycie', 'Jak używać suszarki Dyson Supersonic r™', and 'Regularna konserwacja suszarki'.</p>	<p>Dyson Supersonic r™ Hair Dryer: Instruction Manual and User Guide</p> <p>Official instruction manual for the Dyson Supersonic r™ hair dryer. Learn about its features, how to use it, attachments, and regular maintenance for optimal performance.</p>
 <p>The image shows the cover of the 'dyson supersonic User manual'. It features a black and white photograph of the hair dryer. Below the image, there is a list of topics covered in the manual: 'In the box', 'Getting started', 'LEDs', 'Using your hair dryer', and 'Regular filter cleaning'.</p>	<p>Dyson Supersonic Hair Dryer User Manual and Guide</p> <p>Comprehensive user manual for the Dyson Supersonic hair dryer, covering setup, features, attachments, LED indicators, diagnostics, and filter cleaning for optimal performance.</p>

	<p>Dyson Supersonic Nural Hair Dryer User Manual</p> <p>Comprehensive user manual for the Dyson Supersonic Nural hair dryer, detailing its features, Nural™ sensors, styling attachments, LED indicators, and filter cleaning instructions.</p>
	<p>Dyson Supersonic User Manual - Features, Attachments, and Maintenance Guide</p> <p>Comprehensive user manual for the Dyson Supersonic hair dryer, covering setup, features, attachments, LED indicators, and filter maintenance. Learn how to use and care for your Dyson Supersonic.</p>