

[Manuals.plus](#) /

› [Lightinginside](#) /

› Lightinginside Smart Light Bulbs (Model LYS-018) User Manual

Lightinginside LYS-018

Lightinginside Smart Light Bulbs

MODEL: LYS-018

Introduction

This manual provides detailed instructions for the installation, setup, and operation of your Lightinginside Smart Light Bulbs. These bulbs offer advanced features including color changing, tunable white light, dimming capabilities, and smart control via app and voice assistants.

What's in the Box

- 2 x Lightinginside Smart Light Bulbs
- 1 x User Manual

Key Features

- **High Brightness:** 1350 lumens (100W Equivalent) for brighter white and colorful lighting.
- **Voice Control:** Compatible with Amazon Alexa and Google Assistant for hands-free operation.
- **Flexible Configuration:** Connects locally via Bluetooth or Wi-Fi, with remote control via Wi-Fi.
- **Faster Setup:** Features an upgraded 2nd-generation Bluetooth + Wi-Fi dual-channel chip for quicker and more reliable pairing.
- **Always Connected:** Bluetooth backup ensures local control even if Wi-Fi is temporarily unavailable.
- **Tunable White & RGB:** Offers over 16 million RGB colors and 2700-6500K tunable white light, along with default and custom scenes.
- **Automated Lighting:** Schedule, timer, plan, and biorhythm functions available via the SmartLife App.
- **No Hub Required:** Direct connection to 2.4 GHz Wi-Fi network via the SmartLife App.
- **Energy Saving:** 11W LED bulbs with a 25,000-hour lifespan.

Specifications

Attribute	Value
Brand	Lightinginside
Model Number	LYS-018
Light Type	LED
Wattage	11 Watts
Incandescent Equivalent	100 Watts
Brightness	1350 Lumens
Color Temperature	2700K-6500K (Tunable White) + RGB
Bulb Shape Size	A19
Bulb Base	E26
Connectivity Technology	Bluetooth, Wi-Fi (2.4 GHz)
Control Method	App, Voice (Alexa, Google Assistant)
Lifespan	25,000 hours
Certifications	ETL, FCC, RoHS

Setup Guide

Follow these steps to set up your Lightinginside Smart Light Bulbs:

- 1. Install the Bulb:** Screw the smart light bulb into any standard E26 socket.
- 2. Download SmartLife App:** Download the free SmartLife - Smart Living App from your mobile device's app store.
- 3. Open App and Add Device:** Open the SmartLife App and tap the '+' icon to add a new device. The app will guide you through the pairing process.
- 4. Connect to Wi-Fi:** Ensure your Wi-Fi network is 2.4 GHz. The bulb will intelligently switch between Bluetooth and Wi-Fi as needed after initial pairing. (Note: Wi-Fi setup requires both 2.4GHz Wi-Fi and Bluetooth for initial pairing. Bluetooth-only setup requires just Bluetooth.)
- 5. Link with Voice Assistant (Optional):** After successful pairing with the SmartLife App, you can link your SmartLife account to Amazon Alexa or Google Assistant for voice control.



Image: Step-by-step guide for setting up the smart bulbs using the SmartLife App and linking to voice assistants.

Operating Instructions

Control your Lightinginside Smart Light Bulbs using the SmartLife App or compatible voice assistants.

SmartLife App Control

- **Color & Tunable White:** Choose from 16 million RGB colors or adjust white light from 2700K (warm) to 6500K (cool).



Image: Control 16 million colors via the SmartLife App.

Upgraded WiFi & Bluetooth Combo Chips

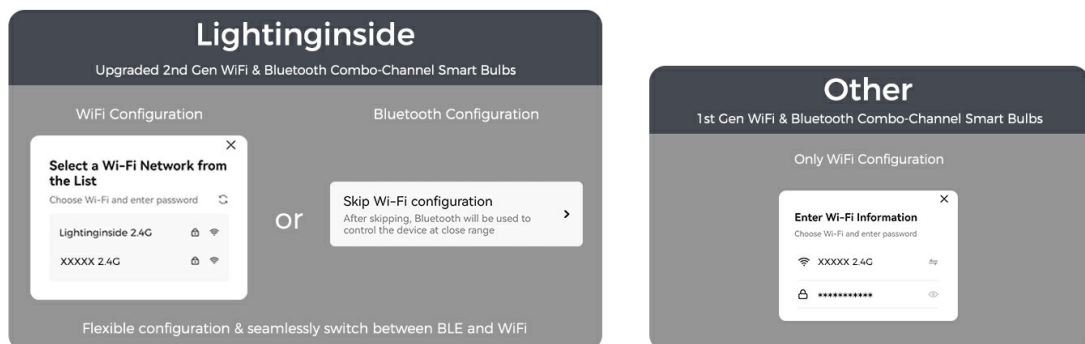


Image: Adjust tunable white light from warm to cool.

- **Brightness:** Dim the lights from 1% to 100% via the app or voice assistant *Note: Do not use with*

traditional dimmer switches, as this may cause flickering or buzzing.

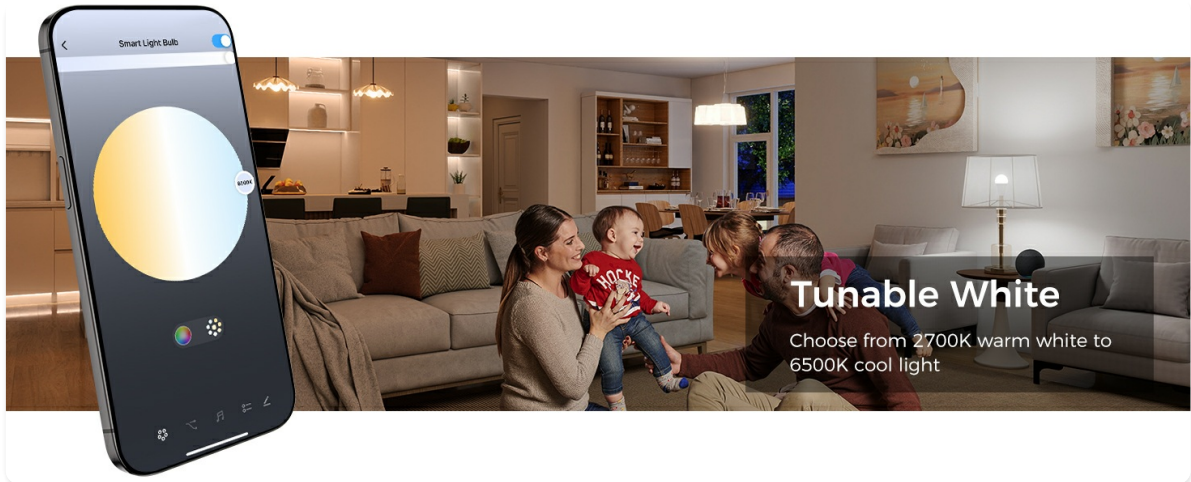


Image: Adjust brightness from 1% to 100%.

- **Scenes & DIY:** Select from preset scenes or create your own custom lighting effects.



Image: Create custom scenes for any occasion.

- **Music Sync:** Activate music mode to synchronize light changes with the beat of your music. *(Note: Music sync only works with the SmartLife App.)*



Image: Enjoy color changes synchronized to music.

- **Biorhythm & Scheduling:** Utilize schedule, timer, plan, and biorhythm functions to automate your lighting.

How to Set Up the Smart Bulbs

*Our official Smart Life-Smart Living App is user-friendly and without any charge.

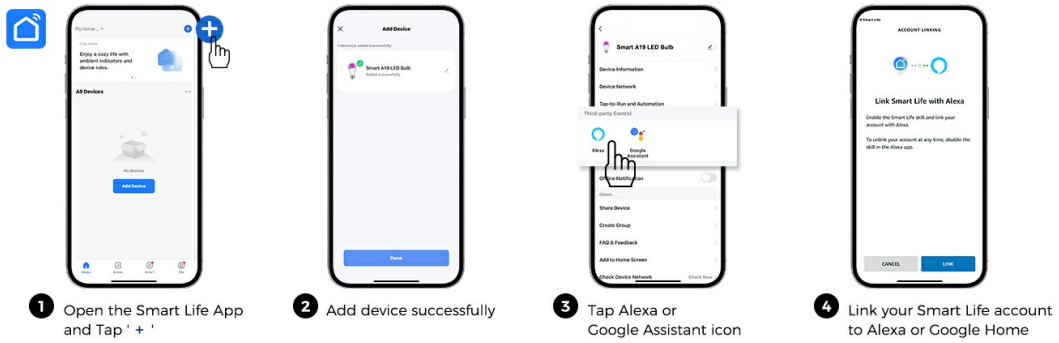


Image: One-touch setup for well-being lighting with biorhythm.

Music Sync



Enjoy the color change to the beat of music

Image: Automate your lights with schedules and timers.

- **Group Control:** Control multiple E26 bulbs separately or in groups for a customized experience.

Auto-located Biorhythm



Image: Control multiple bulbs simultaneously with group control.

Voice Control

Once linked, use simple voice commands with Alexa or Google Assistant:

- "Alexa, turn on the kitchen light."
- "Hey Google, set the bedroom light to blue."
- "Alexa, dim the living room lights to 50%."

2700K-6500K+RGB

2700k - 6500k White, 16 million RGB Colors



Image: Control your lights hands-free with Alexa and Google Assistant.

DIY Scenes



Set the mood for any occasion with custom scenes

Image: Voice commands for turning lights on/off and changing settings.

Maintenance

Lightinginside Smart Light Bulbs are designed for long-lasting performance with a 25,000-hour lifespan. No special maintenance is required beyond regular cleaning of the bulb and fixture when powered off. Ensure

the bulb is securely screwed into the socket.

Troubleshooting

- **Bulb not connecting to Wi-Fi:** Ensure your Wi-Fi network is 2.4 GHz. Some routers broadcast both 2.4 GHz and 5 GHz networks; try connecting to the 2.4 GHz specific network. Make sure Bluetooth is enabled on your phone during initial setup.
- **Bulb flickering or buzzing:** These smart bulbs are not compatible with traditional dimmer switches. Please dim the light using the SmartLife App or a voice assistant.
- **Schedules resetting after power outage:** In some cases, power outages may reset schedules. Reconfigure schedules within the SmartLife App if this occurs.
- **Bulb not turning off completely:** If a bulb remains faintly lit when turned off, ensure it is not connected to a dimmer switch. If the issue persists, try resetting the bulb by turning it off and on quickly several times (usually 3-5 times) until it blinks, then re-pair it.

Warranty & Support

Your Lightinginside Smart Light Bulbs come with a **2-year warranty**. For technical support or warranty claims, please contact Lightinginside customer service.

Customer Service: 877-522-8599 (Weekdays 8am-5pm PDT)

Safety Information

- Do not use with standard dimmer switches.
- Ensure power is off before installing or removing the bulb.
- Do not disassemble or modify the bulb.
- Suitable for indoor and outdoor use as specified.

Product Videos

Your browser does not support the video tag.

Video: Demonstrates color changing capabilities of the smart LED bulbs.

Your browser does not support the video tag.

Video: Overview of smart light bulb features and app control.

Your browser does not support the video tag.

Video: Demonstrates how the smart bulbs function and integrate.

Your browser does not support the video tag.

Video: Showcases the aesthetic color-changing capabilities of the bulbs.

Your browser does not support the video tag.

Video: Unboxing, first look, and demonstration of the smart light bulbs.

Your browser does not support the video tag.

Video: Review highlighting the RGB+W features of the smart bulbs.

Your browser does not support the video tag.

Video: Demonstrates the appealing qualities of the smart bulbs.

Your browser does not support the video tag.

Video: A detailed review of the smart light bulb's features and performance.