

Toowell Toowell Außenlampe mit Bewegungsmelder

Toowell Outdoor Motion Sensor Battery-Powered Wall Light Instruction Manual

INTRODUCTION

Thank you for choosing the Toowell Outdoor Motion Sensor Battery-Powered Wall Light. This manual provides detailed instructions for the proper installation, operation, and maintenance of your new light. Please read this manual thoroughly before use and retain it for future reference.

This product is designed to provide efficient, motion-activated illumination for outdoor areas such as porches, garages, driveways, and gardens, enhancing both convenience and security.

PRODUCT OVERVIEW

Key Features

- **Enhanced Motion Detection:** Equipped with an upgraded detection chip and a 180° sensing angle, detecting motion up to 30 feet.
- **Automatic Operation:** Activates for 20 seconds when motion is detected in ambient light conditions below 15 lux (dusk/night). Remains off during the day.
- **Efficient Illumination:** 4.5W power, 480 lumens, and 5000K (daylight white) light output, equivalent to a 50W halogen light.
- **Long Battery Life:** Designed for extended operation with 4D-cell batteries (not included), providing up to 180 days of battery life.
- **Durable and Weather-Resistant:** Constructed from durable ABS material with an IP65 waterproof rating, ensuring resistance to rain, hail, and snow.
- **Adjustable Light Heads:** Two adjustable light heads allow customization of the beam angle for optimal coverage.

Package Contents

- Toowell Outdoor Motion Sensor Wall Light
- Mounting Plate
- Screws and Wall Plugs for Installation

Product Diagram

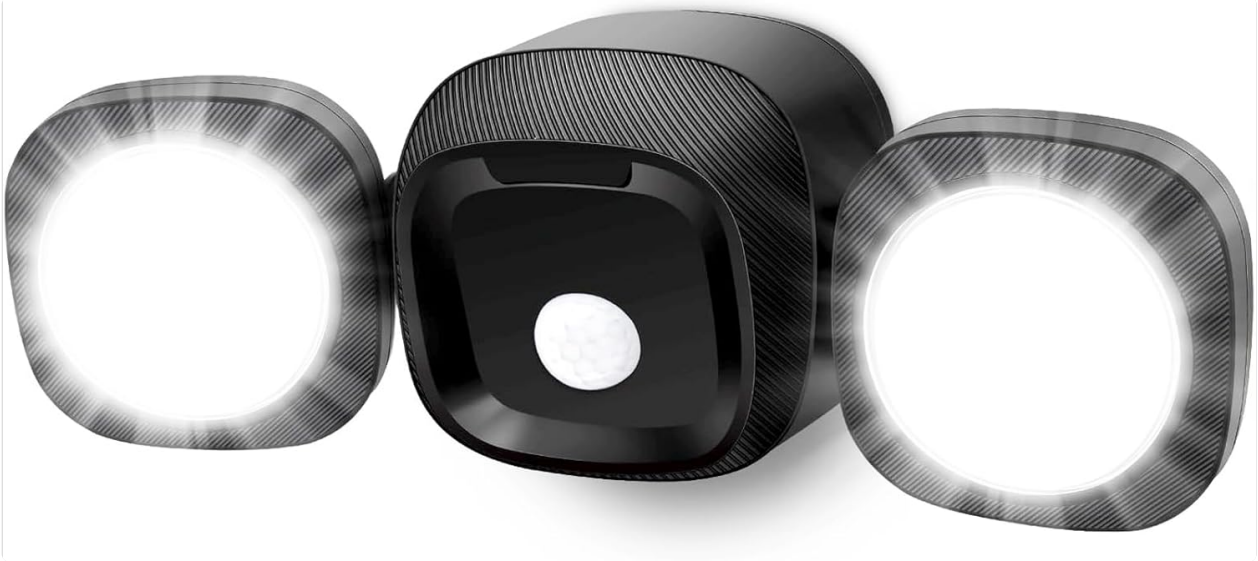


Figure 1: Front view of the Toowell Outdoor Motion Sensor Wall Light, showing the central sensor and two adjustable LED light panels.

2 Adjustable Light Heads

Customize your beam angle



Figure 2: Illustration of the adjustable light heads, demonstrating various beam angles from 180° to 270°.

SETUP AND INSTALLATION

Battery Installation

1. Remove the mounting plate from the back of the light unit using a flat-head screwdriver.
2. Insert 4 new D-type batteries into the battery compartment. Ensure the positive (+) and negative (-) terminals are aligned correctly according to the markings inside the compartment.
3. Securely reattach the battery cover and mounting plate.



Figure 3: Battery compartment for 4 D-cell batteries (not included).

Mounting the Light

The recommended installation height for optimal motion detection is 8-9 feet (approximately 2.4-2.7 meters) from the ground.

1. Choose a suitable location for installation. Ensure the area is clear and the motion sensor will have an unobstructed view of the detection zone.
2. Using the mounting plate as a template, mark the positions for drilling holes on the wall.
3. Drill holes at the marked positions and insert the wall plugs.
4. Attach the mounting plate to the wall using the provided screws.
5. Align the light unit with the mounted plate and slide it into the groove until it clicks securely into place.

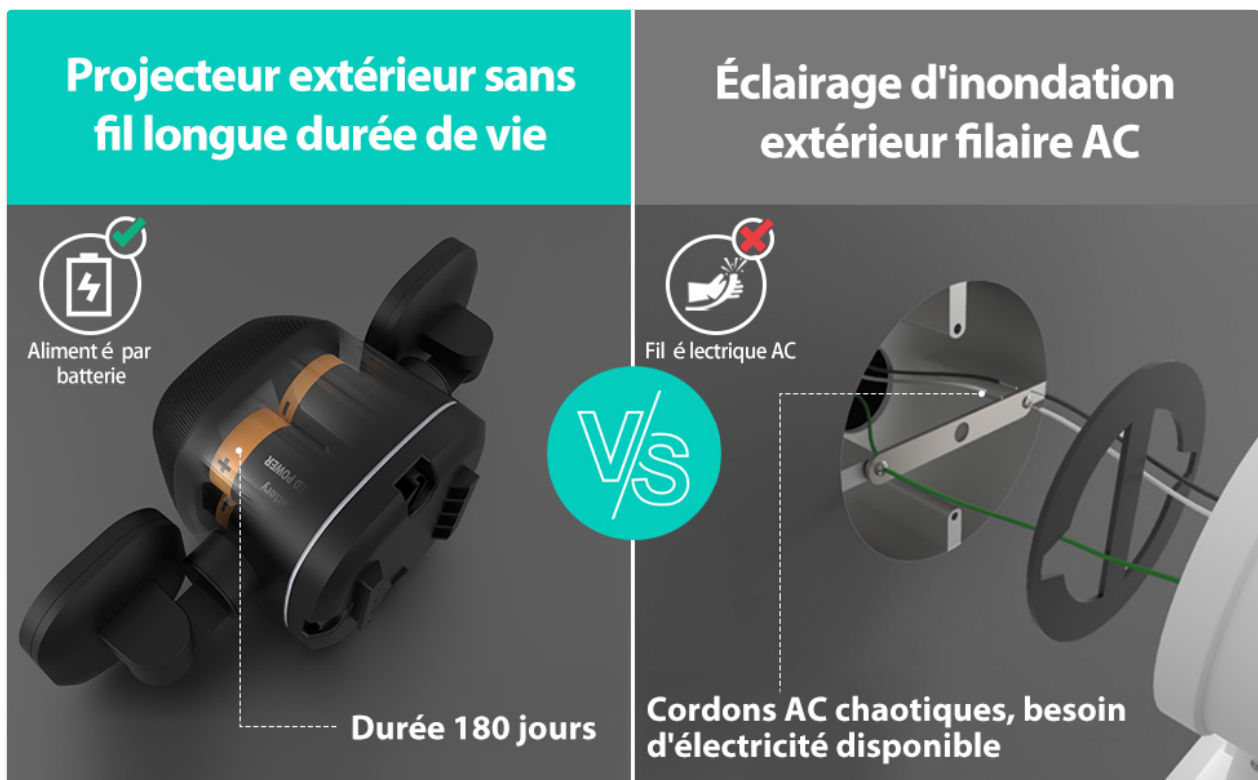


Figure 4: Step-by-step installation guide for the Toowell outdoor light.

Optimizing Sensor Performance

For best performance, ensure the motion sensor is not obstructed and is positioned to cover the desired area. Avoid placing the light where constant movement (e.g., from trees or busy streets) might trigger it unnecessarily.

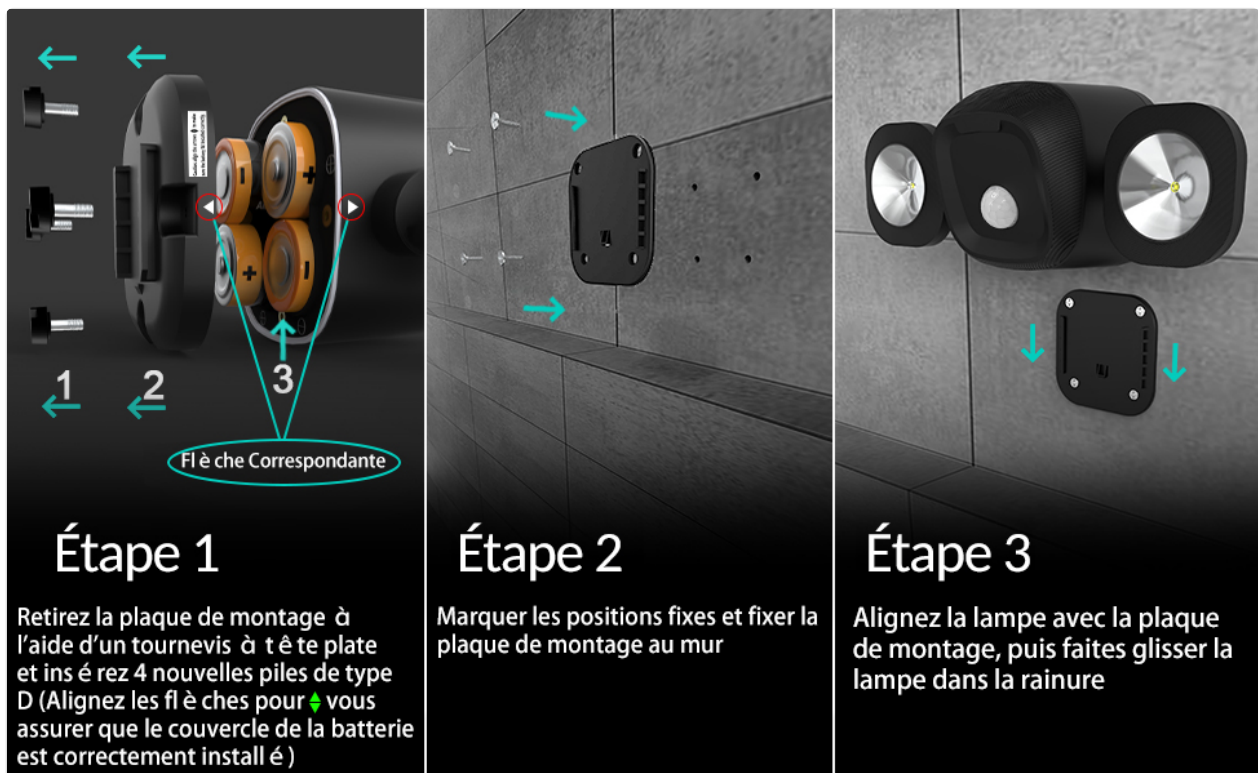


Figure 5: Correct (left) and incorrect (right) sensor placement for optimal detection.

OPERATING INSTRUCTIONS

Motion Sensor Functionality

The Toowell Outdoor Motion Sensor Wall Light features an advanced PIR (Passive Infrared) motion sensor and a photocell sensor for automatic operation.

- **Daytime Operation:** The light will remain off during the day when ambient light is above 15 lux, conserving battery power.
- **Nighttime Operation:** When ambient light drops below 15 lux (dusk/night), the motion sensor becomes active. Upon detecting movement within its 180° and 30-foot range, the light will automatically turn on for approximately 20 seconds.
- **Continuous Detection:** If motion is continuously detected, the light will remain on. It will turn off 20 seconds after the last detected movement.



Figure 6: Motion activation at dusk/night cycle.

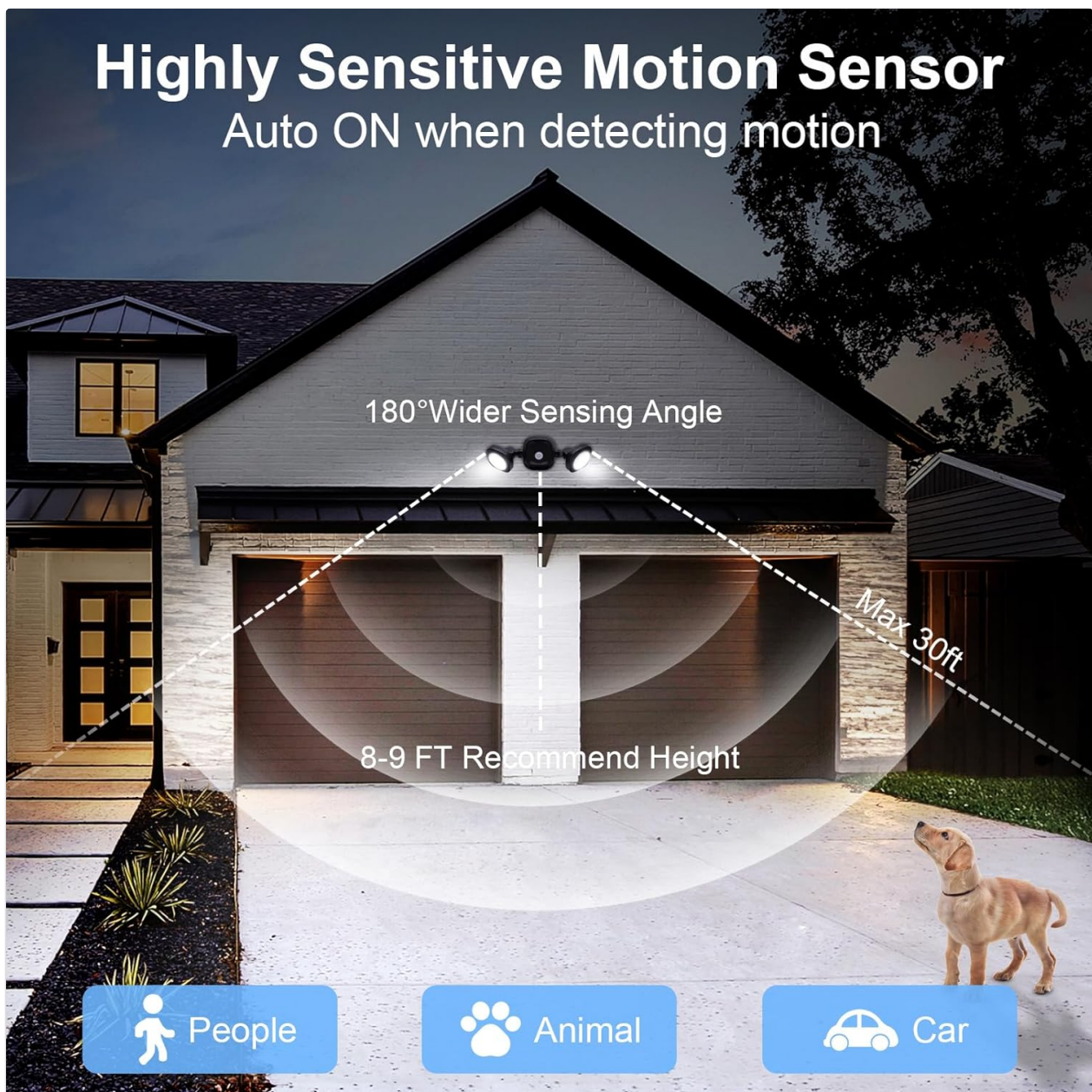


Figure 7: Highly sensitive motion sensor with 180° sensing angle and up to 30ft detection range.

Adjusting Light Heads

The two light heads can be manually adjusted to direct the light beam precisely where needed. Gently pivot each light head to achieve the desired illumination angle.

MAINTENANCE AND CARE

Battery Replacement

When the light output diminishes or the light stops activating, it is time to replace the batteries. Follow the battery installation steps outlined in the 'Setup and Installation' section.

- Always use new D-type batteries.
- Do not mix old and new batteries, or different types of batteries.
- Dispose of used batteries responsibly according to local regulations.

Cleaning

To maintain optimal performance and appearance, clean the light periodically.

- Ensure the light is off before cleaning.
- Wipe the exterior with a soft, damp cloth.
- Do not use abrasive cleaners or solvents, as these can damage the finish or electronic components.
- Keep the motion sensor lens clean and free from obstructions for accurate detection.

TROUBLESHOOTING

Problem	Possible Cause	Solution
Light does not turn on at night.	1. Insufficient battery power. 2. Motion sensor obstructed or dirty. 3. Ambient light is too high.	1. Replace batteries. 2. Clean the sensor lens and ensure no obstructions. 3. Ensure the light is installed in a dark area at night.
Light stays on continuously.	1. Constant motion in detection zone. 2. Sensor malfunction.	1. Reposition the light to avoid constant triggers. 2. Contact customer support if problem persists after repositioning.
Detection range is poor.	1. Incorrect installation height. 2. Sensor obstructed. 3. Extreme temperatures affecting sensor.	1. Adjust installation height to 8-9 feet. 2. Clear any obstructions from the sensor's view. 3. Ensure operating within specified temperature ranges.

TECHNICAL SPECIFICATIONS

- **Brand:** Toowell
- **Model:** Toowell Außenlampe mit Bewegungsmelder
- **Product Dimensions:** 28 x 12 x 10 cm (11 x 4.7 x 3.9 inches)
- **Weight:** 390 grams (0.86 lbs)
- **Material:** Acrylonitrile Butadiene Styrene (ABS)
- **Color:** Black
- **IP Rating:** IP65 (Dust tight and protected against water jets)
- **Power Source:** Battery Powered (4 x D-type batteries, not included)
- **Voltage:** 6 Volts
- **Bulb Type:** LED
- **Luminous Flux:** 480 lumens
- **Power:** 4.5 Watts
- **Color Temperature:** 5000 Kelvin (Daylight White)
- **Special Features:** Motion Detector, Anti-rust, Shock Resistant, Energy Saving, Portable
- **Installation Type:** Wall Mount

SAFETY INFORMATION

- This product is for outdoor use only.
- Do not attempt to disassemble or modify the light. This may void the warranty and pose a safety risk.


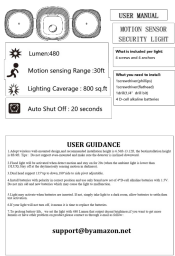
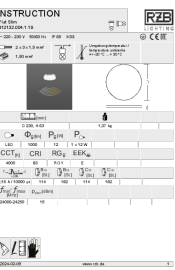
- Ensure proper battery polarity when installing batteries. Incorrect installation can cause damage to the device or batteries.
- Replace all batteries at the same time. Do not mix old and new batteries or different types of batteries.
- Dispose of batteries according to local environmental regulations.
- Keep out of reach of children.
- Avoid looking directly into the LED light when it is on, as it may cause temporary vision impairment.

WARRANTY AND CUSTOMER SUPPORT

Toowell products are manufactured to high-quality standards. For specific warranty details, please refer to the warranty card included with your purchase or visit the official Toowell website. If you encounter any issues or have questions regarding your product, please contact Toowell customer support through the retailer where the product was purchased or via the contact information provided on the official Toowell website.

Spare parts availability and software update information for this product are currently unavailable.

Related Documents - Toowell Außenlampe mit Bewegungsmelder

	<p>Motion Sensor Security Light User Manual</p> <p>User manual for the TOOWELL Motion Sensor Security Light, detailing installation, features, and guidance for optimal use. Covers lumen output, motion sensing range, lighting coverage, auto shut-off, battery installation, and mounting.</p>
	<p>Motion Sensor Security Light User Manual</p> <p>User manual for the TOOWELL Motion Sensor Security Light, detailing installation, features, and guidance for optimal use. Covers lumen output, motion sensing range, lighting coverage, auto shut-off, battery installation, and mounting.</p>
	<p>RZB Flat Slim LED Luminaire Installation and Safety Instructions</p> <p>Comprehensive instructions for the RZB Flat Slim LED luminaire (model 312132.004.1.19), covering installation, safety guidelines, technical specifications, and compliance information.</p>

	<p>Goobay Infrarot Bewegungsmelder 95174, 95175, 96001 Bedienungsanleitung</p> <p>Bedienungsanleitung für den Goobay Infrarot Bewegungsmelder. Enthält Informationen zu Installation, Bedienung, Sicherheitshinweisen und Fehlerbehebung für die Modelle 95174, 95175 und 96001.</p>
	<p>Fontastic WiFi Motion Detector - User Manual and Setup Guide</p> <p>Comprehensive guide to setting up and using the Fontastic WiFi Motion Detector. Learn about installation, configuration, features, and technical specifications.</p>
	<p>Hama WiFi Motion Detector Operating Instructions</p> <p>Comprehensive operating instructions for the Hama WiFi Motion Detector, covering setup, installation, battery and mains operation, app integration, setting options, and usage scenarios. Includes safety warnings and disposal information.</p>