

## GA.MA ITALY PROFESSIONAL iQ1 Perfetto

# GA.MA iQ1 Perfetto Hair Dryer Instruction Manual

Model: iQ1 Perfetto

## INTRODUCTION

---

The GA.MA iQ1 Perfetto Hair Dryer is a professional-grade styling tool designed for efficient and gentle hair drying. Featuring a powerful 110,000 RPM intelligent brushless motor and Oxy Active Technology, it aims to provide fast drying, enhanced shine, and improved hair health. This manual provides essential information for safe and effective use, maintenance, and troubleshooting.

## SAFETY INFORMATION

---

For your safety and to prevent damage to the appliance, please observe the following precautions:

- Keep the appliance out of reach of children.
- Do not rinse or submerge the appliance in water or any other liquid.
- Keep the power plug and cord away from heated surfaces.
- Do not use the hair dryer while bathing or in close proximity to water.
- Always unplug the appliance after use and before cleaning.
- Ensure your hands are dry before handling the appliance or plugging it in.

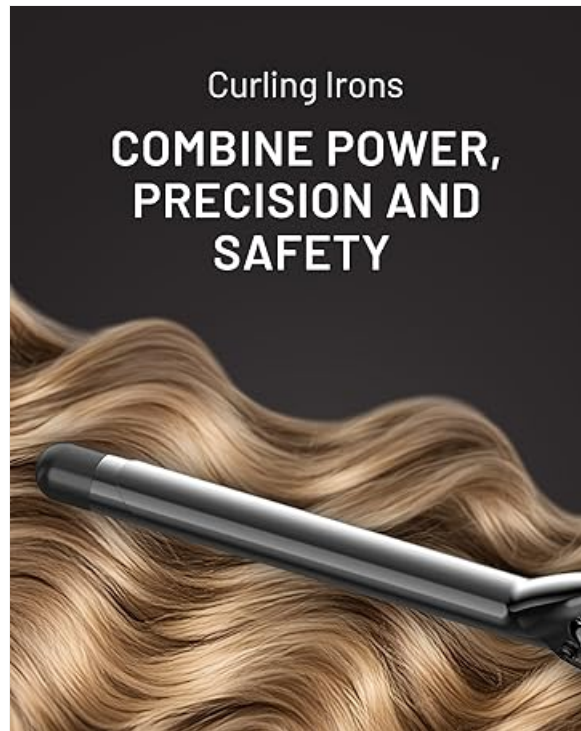


Image: The GA.MA iQ1 Perfetto Hair Dryer, highlighting its E-System C Technology for safety and consistent performance by monitoring temperature and airflow.

## **PRODUCT OVERVIEW AND COMPONENTS**

---

The GA.MA iQ1 Perfetto Hair Dryer is engineered for optimal performance and user comfort. Key components and included accessories are detailed below.

iQ<sub>1</sub>  
perfetto

# HAIR DRYER

WE CREATE  
SMART PERFORMANCE

Compact yet  
powerful, intelligent  
and innovative.  
Bring extraordinary  
styling.



Image: The GA.MA iQ1 Perfetto Hair Dryer in Rose Gold, showcasing its compact and ergonomic design.

## Key Features:

- **110,000 RPM Intelligent Brushless Motor:** Provides powerful and fast airflow for quick drying.
- **Oxy Active Technology:** Emits active oxygen and negative ions to protect hair, enhance shine, and reduce frizz.
- **Ultra-Lightweight Design:** Weighs only 0.65 lb (294g) for comfortable handling during extended use.
- **Smart Auto-Clean & Washable Filter System:** Ensures longevity and consistent performance by preventing debris buildup.
- **12 Custom Settings & LED Display:** Offers 3 heat and 3 speed levels with a memory function for personalized styling.

# WE ARE A BEAUTY TECH COMPANY

At the cutting edge  
of innovation in haircare

Image: A close-up of the GA.MA iQ1 Perfetto Hair Dryer with text detailing Oxy Active Technology, which releases active oxygen and negative ions to seal cuticles, repair damage, purify the scalp, tame frizz, and accelerate regeneration for healthy hair.

## Included Accessories:



Flat Irons  
**STRAIGHTEN  
AND CURL HAIR  
WITH EASE**

Image: The GA.MA iQ1 Perfetto Care Kit, including a cleaning cloth, cleaning brush, anti-slip pad, hanging ring, and a spare mesh filter.

- **Professional Diffuser:** Spreads hot air evenly over larger surfaces, ideal for curly or wavy hair, preserving natural shape and eliminating frizz.
- **Large Concentrator Nozzle:** For drying sections and quick drying.
- **Narrow Concentrator Nozzle:** For waves, ringlets, and enhanced shine.
- **Care Kit:** Includes a cleaning cloth, cleaning brush, anti-slip pad, hanging ring, and a spare mesh filter for maintenance.



Image: The GA.MA iQ1 Perfetto Hair Dryer shown with its professional diffuser and two concentrator nozzles.

## SETUP

---

1. **Unpacking:** Carefully remove the hair dryer and all accessories from the packaging. Retain packaging for future storage or transport.
2. **Power Connection:** Ensure the power cord is fully extended and free from kinks. Plug the hair dryer into a suitable electrical outlet (110-120V AC).
3. **Attaching Nozzles/Diffuser:** Select the desired attachment (diffuser, large concentrator, or narrow concentrator). Align the attachment with the front of the hair dryer and push firmly until it clicks into place. Ensure it is securely attached before use.

## OPERATING INSTRUCTIONS

---

The GA.MA iQ1 Perfetto offers various settings for customized styling.

# CARE KIT



Image: A close-up view of the control panel on the GA.MA iQ1 Perfetto Hair Dryer handle, showing buttons for heat, speed, and cool shot.

1. **Power On/Off:** Locate the power button on the handle. Press to turn the hair dryer on or off.
2. **Adjusting Speed:** Use the speed control buttons (usually indicated by fan icons) to select one of the three available airflow speeds. The LED display will show the current setting.
3. **Adjusting Heat:** Use the heat control buttons (usually indicated by temperature icons) to select one of the three available heat levels. The LED display will show the current setting.
4. **Cool Shot Function:** Press and hold the cool shot button (often indicated by a snowflake icon) for a burst of cool air to set your style.
5. **Memory Function:** The hair dryer features a memory function that recalls your last used heat and speed settings for convenience.
6. **Oxy Active Technology:** This technology is automatically activated during use, releasing active oxygen and negative ions to benefit hair health.

## MAINTENANCE

Regular maintenance ensures the longevity and optimal performance of your GA.MA iQ1 Perfetto Hair Dryer.



Image: An exploded view showing the micro-perforated filter and inner mesh filter of the GA.MA iQ1 Perfetto Hair Dryer, highlighting their removable design for cleaning.

1. **Auto-Clean Function:** The hair dryer is equipped with a Smart Auto-Clean system. To activate, ensure the appliance is unplugged. Refer to the instruction manual for specific button combinations or procedures to initiate the reverse turbine motion, which expels debris from the filter.
2. **Manual Filter Cleaning:**
  - Ensure the hair dryer is unplugged and cool.
  - Gently twist and remove the rear filter cover.
  - Remove the inner mesh filter.
  - Use the provided cleaning brush or a soft cloth to remove any accumulated hair, dust, or debris from both the filter cover and the mesh filter.
  - The mesh filter can be washed with water if necessary. Ensure it is completely dry before reassembling.
  - Reinsert the clean mesh filter and twist the filter cover back into place until secure.
3. **General Cleaning:** Wipe the exterior of the hair dryer with a soft, damp cloth. Do not use abrasive cleaners or solvents.

## TROUBLESHOOTING

If you encounter issues with your GA.MA iQ1 Perfetto Hair Dryer, refer to the following common solutions:

Problem	Possible Cause	Solution
Hair dryer does not turn on.	No power, faulty outlet, or internal issue.	Check power connection and try a different outlet. Ensure the power button is pressed. If the issue persists, contact customer support.
Attachments (nozzles/diffuser) fall off during use.	Attachment not securely fastened or worn attachment mechanism.	Ensure attachments are firmly clicked into place before use. If they continue to fall off, the attachment mechanism may be worn. Contact customer support for replacement attachments if necessary.
Reduced airflow or overheating.	Blocked air intake filter.	Clean the rear filter using the Auto-Clean function or manually as described in the Maintenance section.
Unusual noise during operation.	Debris in the motor or fan, or a loose component.	Perform the Auto-Clean function to clear debris. If the noise continues, discontinue use and contact customer support.

## SPECIFICATIONS

Feature	Detail
Model	iQ1 Perfetto
Motor Type	Intelligent Brushless Motor
Motor Speed	110,000 RPM
Power	1600W
Weight	0.65 lb (294g)
Technology	Oxy Active Technology, E-System C Technology
Settings	3 Heat Levels, 3 Speed Levels, Cool Shot, Memory Function
Filter System	Smart Auto-Clean, Washable Micro-Perforated Filter
Included Accessories	Professional Diffuser, Large Concentrator Nozzle, Narrow Concentrator Nozzle, Care Kit (Cleaning Cloth, Cleaning Brush, Anti-slip Pad, Hanging Ring, Spare Mesh Filter)
Product Dimensions	7.13 x 1.5 x 6.5 inches
Power Source	Corded Electric

## WARRANTY AND SUPPORT

For warranty information, product registration, or technical support, please refer to the official GA.MA ITALY PROFESSIONAL website or contact their customer service. Keep your purchase receipt as proof of purchase for any warranty claims.

**Manufacturer:** Ga.Ma Italy Professional

**Return Policy:** Typically 30 days for refund/replacement, as per Amazon's buybox winner information.

Please check the retailer's specific return policy at the time of purchase.