

Ricokids 7319

Ricokids 3-in-1 Interactive Play Mat Instruction Manual

Brand: Ricokids | **Model:** 7319

INTRODUCTION

The Ricokids 3-in-1 Interactive Play Mat is designed to support your child's early development through engaging play. This versatile play mat offers three flexible configurations, seven captivating toys, and a tummy time pillow, providing a dynamic environment for exploration and growth. Constructed from soft, easy-to-clean material with an insulated underside, it ensures comfort and safety during playtime. The reversible design features an animal kingdom theme, combining a secure play area with valuable motor skill stimulation. This product complies with EN71 standards.

SAFETY INFORMATION

- Always supervise your child while they are using the play mat.
- Ensure all components are securely assembled before placing your child on the mat.
- Keep small parts and packaging materials away from children to prevent choking hazards.
- Do not modify the product or use it for purposes other than its intended use.
- Regularly inspect the mat and toys for any signs of wear or damage. Discontinue use if any damage is found.
- Place the play mat on a flat, stable surface.

PACKAGE CONTENTS

Please verify that all items are present in the package:

- 1x Ricokids Interactive Play Mat
- 2x Flexible Arches

- 7x Multifunctional Hanging Toys (including mirror, rattles, crinkles, squeaky dinosaur)
- 1x Tummy Time Pillow

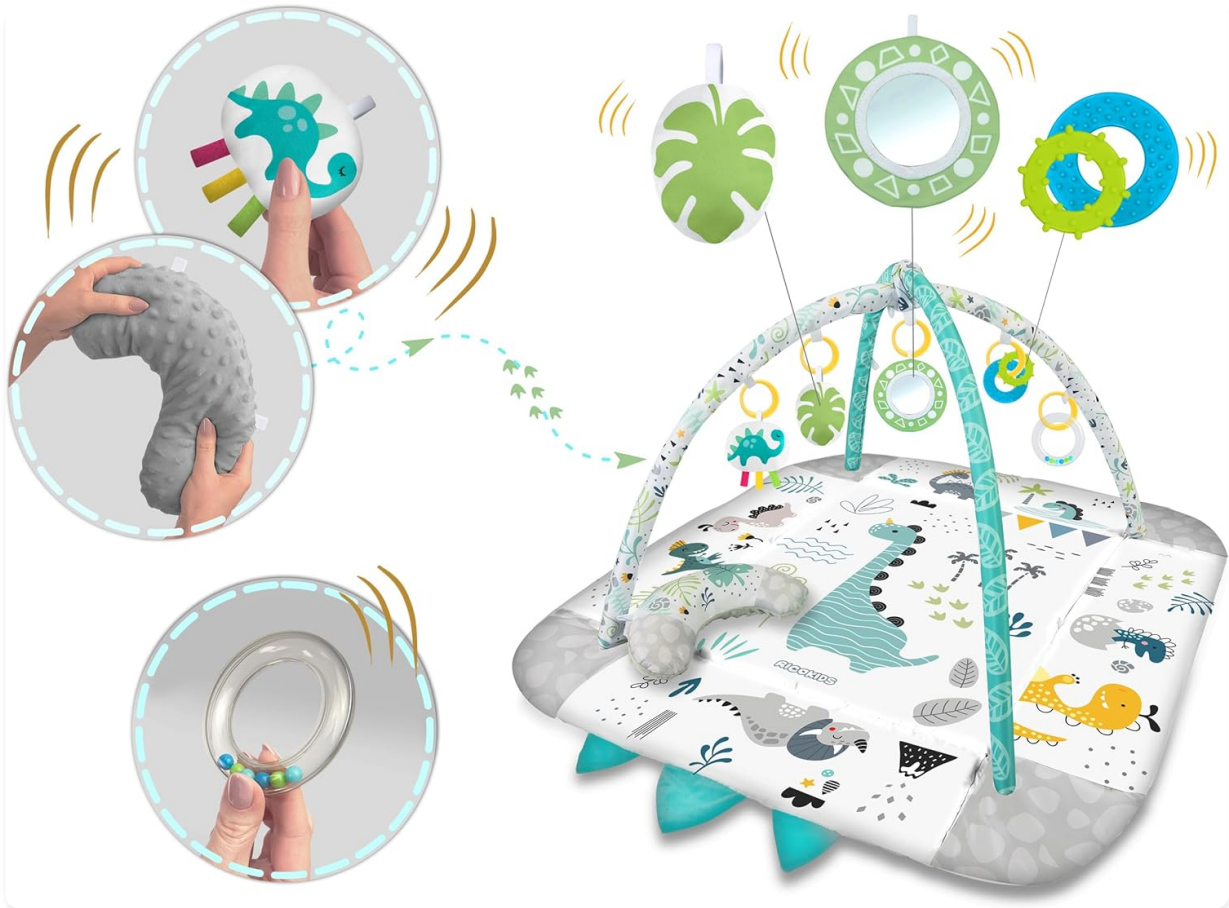


Image: Close-up view of the included toys and the tummy time pillow, highlighting their features like rattles and a mirror.

SETUP INSTRUCTIONS

1. **Unfold the Mat:** Lay the play mat flat on a clean, stable surface.
2. **Attach the Arches:** Insert the ends of the flexible arches into the designated slots on the corners of the play mat. Ensure they are securely fastened. The arches are designed to be easily adjustable.
3. **Raise the Sides (Optional):** For a more enclosed play area, use the Velcro fasteners to raise and secure the sides of the mat.
4. **Attach Toys:** Hang the multifunctional toys from the loops on the arches. Adjust their positions to encourage reaching and interaction.
5. **Position Tummy Time Pillow:** Place the tummy time pillow on the mat as needed to support your child during tummy time.



Image: The Ricokids play mat fully assembled in its arch configuration, showing the mat, arches, and hanging toys.



Image: Visual representation of the three possible configurations of the play mat: a flat mat, a mat with its sides raised, and a mat with arches for hanging toys.

OPERATING INSTRUCTIONS (USAGE MODES)

The Ricokids 3-in-1 Interactive Play Mat offers versatile usage to adapt to your child's developmental stages:

- **Flat Play Mat:** Use the mat without arches or raised sides for a spacious and comfortable area for

your child to lie, roll, and explore. The reversible design provides two different animal-themed patterns for visual stimulation.

- **Play Mat with Raised Sides:** Secure the sides of the mat using the Velcro fasteners to create a more contained play space. This can be beneficial for younger infants or to keep toys within reach.
- **Activity Gym with Arches:** Attach the flexible arches and hang the included toys. This configuration encourages reaching, batting, and grasping, promoting fine motor skills and hand-eye coordination. The mirror toy helps with visual recognition.
- **Tummy Time:** Utilize the included tummy time pillow to support your child during tummy time sessions, which are crucial for developing neck and upper body strength.



Image: A baby lying on their stomach on the play mat, engaging with the mat's design, demonstrating tummy time use.



Image: Individual toys from the play mat, such as the mirror, leaf, and rings, are shown being used by a child, demonstrating their versatility.

MAINTENANCE AND CARE

- **Cleaning the Mat:** The play mat is made from easy-to-clean material. It is recommended to hand wash the mat with mild soap and cold water. Do not bleach, tumble dry, or iron.
- **Cleaning Toys:** Wipe the plastic toys with a damp cloth and mild soap. Air dry thoroughly. Fabric toys can be spot cleaned or hand washed gently.

- **Storage:** When not in use, the play mat can be easily folded for compact storage. Ensure it is clean and dry before storing to prevent mold or mildew.

TROUBLESHOOTING

Problem	Possible Cause	Solution
Arches are unstable or collapse.	Not fully inserted into slots; connectors are loose.	Ensure both ends of each arch are firmly pushed into their respective slots until they click into place. Check for any obstructions.
Toys do not hang correctly.	Incorrect attachment to loops; loops are damaged.	Verify that the toy rings or clips are properly secured to the fabric loops on the arches. If loops are damaged, discontinue use.
Mat sides do not stay up.	Velcro fasteners are not aligned or are dirty.	Align the Velcro strips properly and press firmly. Clean any lint or debris from the Velcro to ensure a strong hold.

SPECIFICATIONS

- **Model Number:** 7319
- **Composition:** Fabric, Plastic, Foam
- **Dimensions (L x W x H):** 100 x 110 x 53 cm (approximately 39.4 x 43.3 x 20.9 inches)
- **Weight:** 1.23 kg (approximately 2.71 lbs)
- **Care Instructions:** Hand wash only
- **Batteries Required:** No
- **Manufacturer:** Ricokids
- **ASIN:** B0CDXQT4M6



Image: A diagram illustrating the key dimensions of the play mat, including its length, width, and height when assembled.

WARRANTY AND SUPPORT

For warranty information, product support, or to report any issues, please contact Ricokids directly through their official website or the retailer where the product was purchased. Please have your model number (7319) and ASIN (B0CDXQT4M6) available when contacting support.

You can find more information about Ricokids products and support on their brand store [Ricokids Brand Store](#).