



[Manuals.plus](#) /

> [Sainovo](#) /

> Sailnovo Car Roof Box User Manual

Sainovo SL-7432

Sainovo Car Roof Box User Manual

Model: SL-7432

INTRODUCTION

Thank you for choosing the Sailnovo Car Roof Box. This manual provides essential information for the safe and effective use of your new roof cargo carrier. Please read it thoroughly before installation and operation to ensure proper handling and to maximize the lifespan of your product.



The Sailnovu car roof box, shown with its accompanying accessories including reinforced straps and door hooks, ready for installation.

KEY FEATURES

- **Generous Capacity:** Designed to provide ample storage, this 20 cubic feet (580 liters) roof box can easily accommodate luggage for up to 6 people, including multiple sleeping bags, suitcases, and tents.

20 CUBIT FEET LARGE SPACE



HARD-SHELL CARRIERS

SAILNOVO CARGO CARRIER BAG

With a generous 20 cubic feet (580 liters) of storage, the Sailnovo roof box can accommodate substantial luggage, such as six sleeping bags, four 24-inch suitcases, and two 4-person tents, making it ideal for family trips.

- **Universal Compatibility:** Equipped with 6 door hooks and two extra-long adjustable straps, the roof box can be securely installed on any car or SUV, with or without a roof rack system.

Suitable for all kinds of cars



Truck



SUV



Sedan



Wagon



— Fits for all cars roof —



Without Rack



Side Rail



Cross Bar



Basket/Tray



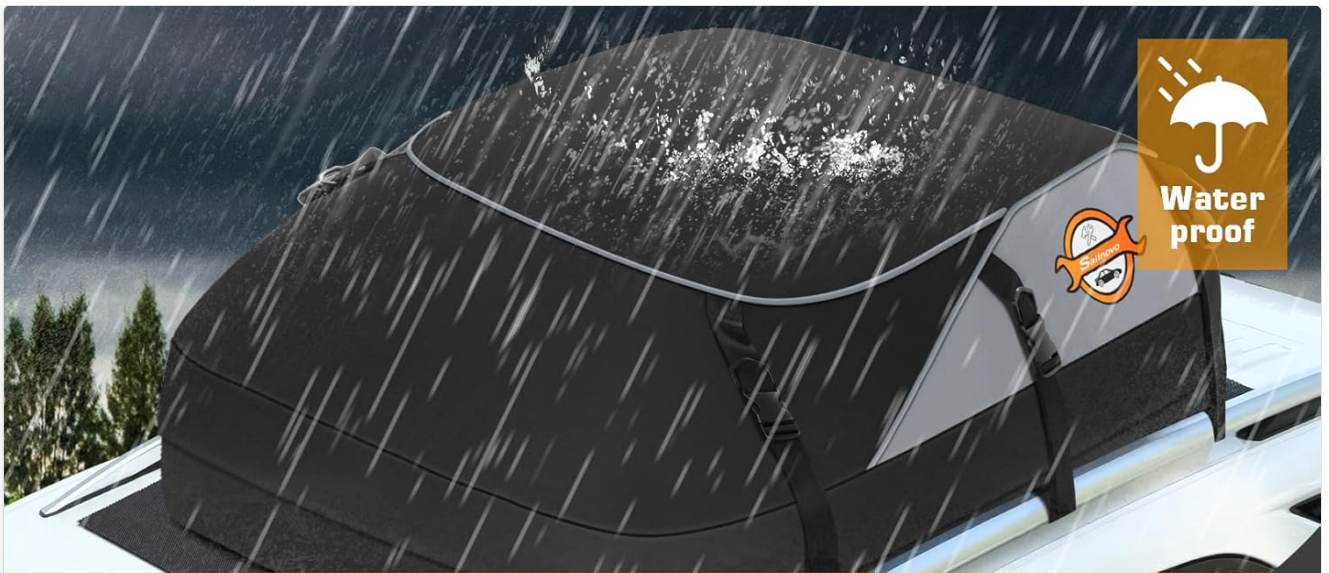
• Without Roof Rack



• With Roof Rack

The Sailnovo roof box is designed for universal compatibility, fitting a wide range of vehicles including trucks, SUVs, sedans, and wagons, and can be installed on cars with or without existing roof racks (side rails, cross bars, or baskets).

- **Highly Waterproof & Tear-Resistant:** Constructed from military-grade 1000D PVC tarpaulin, featuring reinforced waterproof closures and a robust waterproof zipper, ensuring your belongings remain dry and protected from the elements.



Highly Waterproof

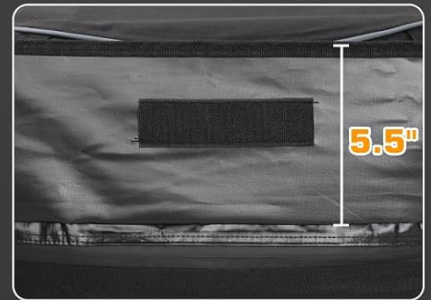
Triple Protection:



● 1000D Waterproof Fabric with PVC Coating



● Waterproof Zippers



● Widened Waterproof Zipper Flap

The roof box features triple-layer waterproofing, including 1000D waterproof PVC coated fabric, waterproof zippers, and an extended waterproof zipper flap, ensuring contents remain dry in adverse weather.

- **Enhanced Security:** Features 6 reinforced adjustable straps and 6 door hooks to keep your luggage firmly in place, even during high-speed travel or on uneven roads.

Sailnovo

More Durable



Rip-Resistant
Ultra-Thick Material



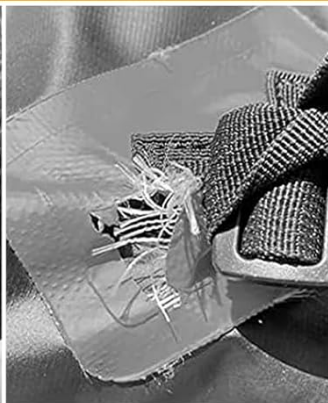
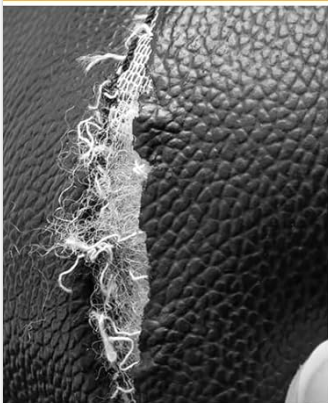
Reinforced Strap



Firm Buckle



Heavy-Duty Zipper



OTHERS

This image highlights the robust construction of the Sailnovo roof box, detailing the rip-resistant ultra-thick material, reinforced straps, firm buckles, and heavy-duty waterproof zippers designed for longevity and security.

- **All-Weather Protection:** Provides comprehensive protection against wind, dust, rain, snow, and sand, safeguarding your items in various extreme weather conditions.

Adopt to All Extreme Weather



Sunproof



Snowproof



Rainproof

Sandproof

Engineered to withstand diverse environmental conditions, the Sailnovo roof box offers protection against sun, snow, rain, and sand, safeguarding your belongings in all extreme weather.

WHAT'S INCLUDED

Your Sailnovo Car Roof Box package includes the following components:

- 1 x Sailnovo Car Roof Box
- 6 x Door Hooks
- 2 x Long Adjustable Straps
- 1 x User Manual (this document)
- 1 x Storage Bag

Accessoires Included:



6 Door Hooks



2 Long Straps



1 Manual



1 Storage Bag

The product package includes essential accessories for installation and storage: six durable door hooks, two extra-long adjustable straps, a user manual, and a compact storage bag for the roof box when not in use.

SETUP AND INSTALLATION

The Sailnovo Car Roof Box is designed for quick and easy installation. Follow these steps for a secure setup:

1. Preparation

1. Ensure your vehicle's roof is clean and free of debris.
2. Unfold the roof box and ensure it is fully expanded.
3. Identify the attachment points on the roof box and your vehicle.

2. Mounting the Roof Box

The roof box can be mounted with or without a roof rack:

- **With Roof Rack:** Position the roof box centrally on your existing roof rack (cross bars, side rails, or basket/tray). Thread the adjustable straps through the designated loops on the roof box and around your roof rack bars. Securely tighten the buckles.
- **Without Roof Rack (using Door Hooks):** Open your vehicle's doors. Place the roof box centrally on the roof. Attach the 6 door hooks to the door frames, ensuring they are firmly seated. Connect the adjustable straps to the door hooks and the roof box loops. Close the doors carefully, ensuring the straps are not pinched.

3. Securing the Load

1. Once the roof box is mounted, open the main zipper.
2. Load your items, distributing weight evenly. Avoid placing sharp or pointed objects directly against the fabric without protection.
3. Close the zipper completely, ensuring the waterproof flap covers the zipper for maximum protection.
4. Double-check all straps and buckles to ensure they are tight and secure before driving.

OPERATING GUIDELINES

- **Loading:** Distribute the weight of your cargo evenly inside the roof box. Place heavier items at the bottom and center. Do not exceed the maximum weight capacity of your vehicle's roof or the roof box itself.
- **Driving:** Drive cautiously, especially at higher speeds, in strong winds, or when cornering. The added weight and drag on your roof can affect vehicle handling. Periodically check the security of the roof box and straps during long journeys.

Safe and Quiet Ride



Bring everything and enjoy traveling with your family!



The secure mounting system of the Sailnovo roof box ensures a stable and quiet ride, allowing passengers inside the vehicle to travel comfortably without disturbance from shifting cargo.

- **Clearance:** Be mindful of increased vehicle height when entering garages, carports, or low-clearance areas.

MAINTENANCE AND CARE

- **Cleaning:** Clean the roof box with mild soap and water. Avoid harsh chemicals or abrasive cleaners that could damage the material. Rinse thoroughly and allow to air dry completely before storing.
- **Storage:** When not in use, empty the roof box and ensure it is clean and dry. Fold it compactly and store it in the provided storage bag in a cool, dry place away from direct sunlight and extreme temperatures.
- **Inspection:** Regularly inspect the fabric, zippers, straps, and buckles for any signs of wear, tear, or damage. Replace any damaged components immediately to ensure safe operation.

TROUBLESHOOTING

- **Roof Box Shifting During Travel:**

Ensure all straps are tightened securely. Re-check the attachment points (door hooks or roof rack connections) to confirm they are properly engaged. Distribute cargo weight evenly to prevent imbalance.

- **Water Leakage:**

Verify that the zipper is fully closed and the waterproof zipper flap is properly covering the zipper. Inspect the fabric for any punctures or tears. Ensure the roof box is not overfilled, which could strain seams.

- **Difficulty Closing Zipper:**

Do not overfill the roof box. Ensure the contents are not pressing against the zipper. Check for any fabric or debris caught in the zipper teeth. Apply a silicone-based lubricant if the zipper is stiff.

- **Excessive Noise While Driving:**

Ensure the roof box is securely mounted and straps are tight to minimize flapping. Check that no loose items are inside the box that could cause rattling.

SPECIFICATIONS

Attribute	Detail
Brand	Sainovo
Model Number	SL-7432
Product Type	Car Roof Box (Soft Shell)
Capacity	20 Cubic Feet / 580 Liters
Material	1000D PVC Tarpaulin
Color	Black
Product Dimensions (L x W x H)	129.5 cm x 99.1 cm x 43.2 cm (51 x 39 x 17 inches)
Item Weight	3.6 Kilograms
Water Resistance Level	Waterproof
Installation Type	Roof Mount (with or without rack)
Closure Type	Zipper

WARRANTY AND SUPPORT

Sainovo is committed to customer satisfaction. Your purchase is backed by:

- **30-Day Money-Back Guarantee:** If you are not completely satisfied with your product, you may return it within 30 days for a full refund.
- **24-Month Customer Service:** We offer free customer service for 24 months from the date of purchase.
- **24/7 Online Support:** Our customer service team is available 24 hours a day, 7 days a week to assist you with any questions or concerns. Please do not hesitate to contact us.

IMPORTANT NOTES AND WARNINGS

To prevent damage to the roof box or your vehicle, please observe the following:

- Do not use sharp or pointed objects when loading or unloading the roof box, as this may scratch or damage the material and your car's roof.
- Always ensure the roof box is securely fastened before driving.
- Adhere to all local traffic laws and regulations regarding vehicle height and cargo securement.



DE	⚠	Um beim Beladen die Dachtasche nicht zu zerkratzen, vermeiden Sie die Verwendung von spitzen oder scharfen Gegenständen.
FR	⚠	Évitez d'utiliser des objets pointus ou tranchants pour ne pas rayer le sac de toit lors du chargement.
IT	⚠	Evitare di utilizzare oggetti affilati o appuntiti per non graffiare la borsa da tetto durante il caricamento.
ES	⚠	Evite utilizar objetos afilados o puntiagudos para evitar rayar la bolsa del techo al cargarla.
NL	⚠	Gebruik geen scherpe of puntige voorwerpen om te voorkomen dat de dakkoffer tijdens het laden bekrast raakt.
PL	⚠	Podczas załadunku nie należy używać ostrych ani spiczastych przedmiotów, aby uniknąć zarysowania boxu dachowego.
TR	⚠	Araç tavan çantasının çizilmesini önlemek için yüklemeye sırasında keskin veya sivri nesnelere kullanmayın.
BE	⚠	Gebruik geen scherpe of puntige voorwerpen om te voorkomen dat de dakkoffer tijdens het laden bekrast raakt.
SE	⚠	Använd inte vassa eller spetsiga föremål vid lastning för att undvika att repa biltaksväskan.
EN	⚠	Do not use sharp or pointed objects when loading to avoid scratching the car roof bag.

Manufacture Date: 05/09/2024
SN: 20240905 ⁰⁰²⁵

An important warning from the manual advises users to avoid using sharp or pointed objects during loading to prevent damage to the car roof or the roof box itself.