

## Siku 1296

# Siku Vespa 125 GTS Super Model 1296 Instruction Manual

## 1. INTRODUCTION

This document provides instructions for the Siku Vespa 125 GTS Super toy model, model number 1296. This detailed miniature replica is designed for play and collection, featuring a metal body, rubber tires, and moving handlebars. It is suitable for individuals aged 3 years and up.

## 2. SAFETY INFORMATION

**WARNING: CHOKING HAZARD. Small parts. Not suitable for children under 3 years due to small parts which could be swallowed.**

## 3. PRODUCT FEATURES

The Siku Vespa 125 GTS Super model 1296 is a meticulously crafted toy vehicle with the following characteristics:

- **Construction:** Sturdy and stable design with a metal body.
- **Detailing:** True-to-original profile, including headlights.
- **Mobility:** Features enjoyable rolling due to rubber tires.
- **Interactive Elements:** Equipped with moving handlebars and a functional stand.



Figure 1: Side view of the Siku Vespa 125 GTS Super toy model, showcasing its detailed design and mint color.



Figure 2: Angled side view of the Siku Vespa 125 GTS Super, highlighting the brown seat and rubber tires.



Figure 3: Rear view of the Siku Vespa 125 GTS Super, showing the taillight and rear wheel assembly.



Figure 4: Front view of the Siku Vespa 125 GTS Super, displaying the handlebars and front wheel.



Figure 5: Angled front view of the Siku Vespa 125 GTS Super, providing a perspective of the scooter's overall shape.

#### **4. UNBOXING AND INITIAL INSPECTION**

Upon receiving the Siku Vespa 125 GTS Super, carefully remove it from its packaging. Inspect the model for any visible damage or missing components. Ensure all parts are securely attached before use.



Figure 6: The Siku Vespa 125 GTS Super toy model as it appears in its retail packaging.

## 5. OPERATION

The Siku Vespa 125 GTS Super is designed for imaginative play. To operate:

1. Place the model on a flat, smooth surface.
2. Gently push the scooter to initiate rolling motion. The rubber tires are designed for smooth movement.
3. The handlebars can be moved to simulate steering.
4. Utilize the integrated stand to park the scooter upright when not in motion.

## 6. CARE AND MAINTENANCE

To ensure the longevity and appearance of your Siku Vespa 125 GTS Super model:

- **Cleaning:** Wipe the model with a soft, dry cloth to remove dust and dirt. For stubborn marks, a slightly damp cloth can be used, followed by immediate drying. Avoid harsh chemicals or abrasive cleaners.
- **Storage:** Store the model in a cool, dry place away from direct sunlight and extreme temperatures to prevent material degradation.
- **Handling:** Handle the model with care to prevent damage to small parts or the paint finish.

## 7. TROUBLESHOOTING

If you encounter any issues with your Siku Vespa 125 GTS Super model, consider the following:

- **Wheels not rolling smoothly:** Check for any debris or obstructions caught in the wheel axles. Ensure the wheels are properly aligned.
- **Loose parts:** If any small parts become loose, attempt to reattach them carefully. If reattachment is not possible or if a part is broken, discontinue use to prevent further damage or safety hazards.

## 8. SPECIFICATIONS

Attribute	Detail
Product Dimensions	2.2 x 0.83 x 1.38 inches (5.6 x 2.1 x 3.5 cm)
Item Weight	0.609 ounces (0.0173 kg)
Model Number	1296
Manufacturer Recommended Age	3 years and up
Material	Metal/Plastic
Color	Mint
Release Date	September 30, 2023



Figure 7: Visual representation of the Siku Vespa 125 GTS Super model's dimensions.

## 9. WHAT'S IN THE BOX

The product package contains:

- 1 x Siku Vespa 125 GTS Super Toy Model

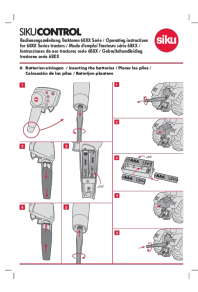
## 10. MANUFACTURER INFORMATION

**Brand:** Siku

**Manufacturer:** Sieper GmbH

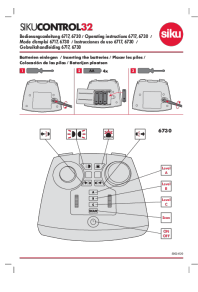
For further inquiries or support, please refer to the contact information provided on the product packaging or the official Siku website.





[SIKU CONTROL 68XX Series Tractors Operating Instructions](#)

Operating instructions for SIKU CONTROL 68XX Series tractors, covering battery installation, system startup, and control adjustments. Includes FCC compliance information.



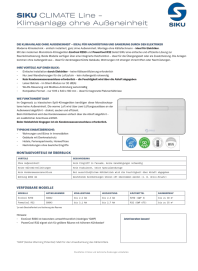
[SIKUCONTROL32 Operating Instructions | Models 6717 & 6730](#)

Comprehensive operating instructions for the SIKUCONTROL32 remote control system, models 6717 and 6730. Includes detailed steps for battery installation, a description of the remote control layout, and essential FCC compliance information.



[SIKU CLIMATE Line: Advanced Monoblock Air Conditioners for Comfortable Room Climate](#)

Discover the SIKU CLIMATE Line, a revolutionary monoblock air conditioning system offering cooling and heating without an outdoor unit. Easy installation, quiet operation, and energy efficiency for modern living.



[SIKU CLIMATE Line: Klimaanlage ohne Außeneinheit | Effiziente Raumklimatisierung](#)

Entdecken Sie die SIKU CLIMATE Line Klimaanlage ohne Außeneinheit. Einfache Installation, integrierte Heizfunktion und leiser Betrieb für Wohnungen, Büros und denkmalgeschützte Gebäude. Modelle: EcoCool R290 & PowerCool R32.