



[Manuals.plus](#) /

> [acpar](#) /

> acpar ACE-1 Car Roof Rack Cross Bar User Manual for Mercedes Vito Tourer (W447) 2014-2025

acpar U01-UN-35-00-G_AC1-319-3lu*ACR

acpar ACE-1 Car Roof Rack Cross Bar User Manual

Model: ACE-1 U01-UN-35-00-G_AC1-319-3lu*ACR | Brand: acpar

Compatible with Mercedes Vito Tourer (W447) 2014-2025

1. INTRODUCTION

This manual provides essential information for the safe and effective installation, operation, and maintenance of your acpar ACE-1 Car Roof Rack Cross Bar system. This product is designed to facilitate the transport of additional loads on your vehicle, such as bicycle carriers, ski carriers, or roof boxes.

The ACE-1 roof rack system is specifically designed for Mercedes Vito Tourer (W447) models manufactured between 2014 and 2025. It is compatible only with vehicles that have existing roof rails with a gap between the vehicle roof and the rail. Please ensure your vehicle meets this requirement before installation.



Image 1.1: acpar ACE-1 Car Roof Rack Cross Bars.



Image 1.2: Vehicle Roof Rail Compatibility. The roof rack is compatible with vehicles featuring roof rails that have a gap between the rail and the vehicle's roof. It is not suitable for flush-mounted roof rails or vehicles without roof rails.

2. SAFETY INFORMATION AND LOAD LIMITS

Adhering to safety guidelines is crucial for preventing accidents and damage to your vehicle or property. Please read and understand all safety instructions before using the roof rack system.

2.1. Maximum Load Capacity

- **Moving Vehicle:** The maximum load carrying limit for the roof rack system on a moving vehicle is **75 kg (165 lbs)**. This limit applies regardless of whether you are using 2, 3, or 4 aluminum bars. Exceeding this limit can compromise vehicle stability and safety.
- **Parked Vehicle:**
 - For a 2-bar system: Maximum 150 kg (330 lbs)
 - For a 3-bar system: Maximum 225 kg (496 lbs)
 - For a 4-bar system: Maximum 300 kg (661 lbs)

2.2. Driving Considerations

- Always distribute the load evenly across the roof bars.
- Secure all loads firmly to prevent shifting during transit.

- Adjust your driving speed according to the load and road conditions. Avoid sudden braking or sharp turns.
- Regularly check the tightness of all mounting hardware, especially during long journeys.
- The maximum recommended speed with a loaded roof rack is **120 km/h (75 mph)**.

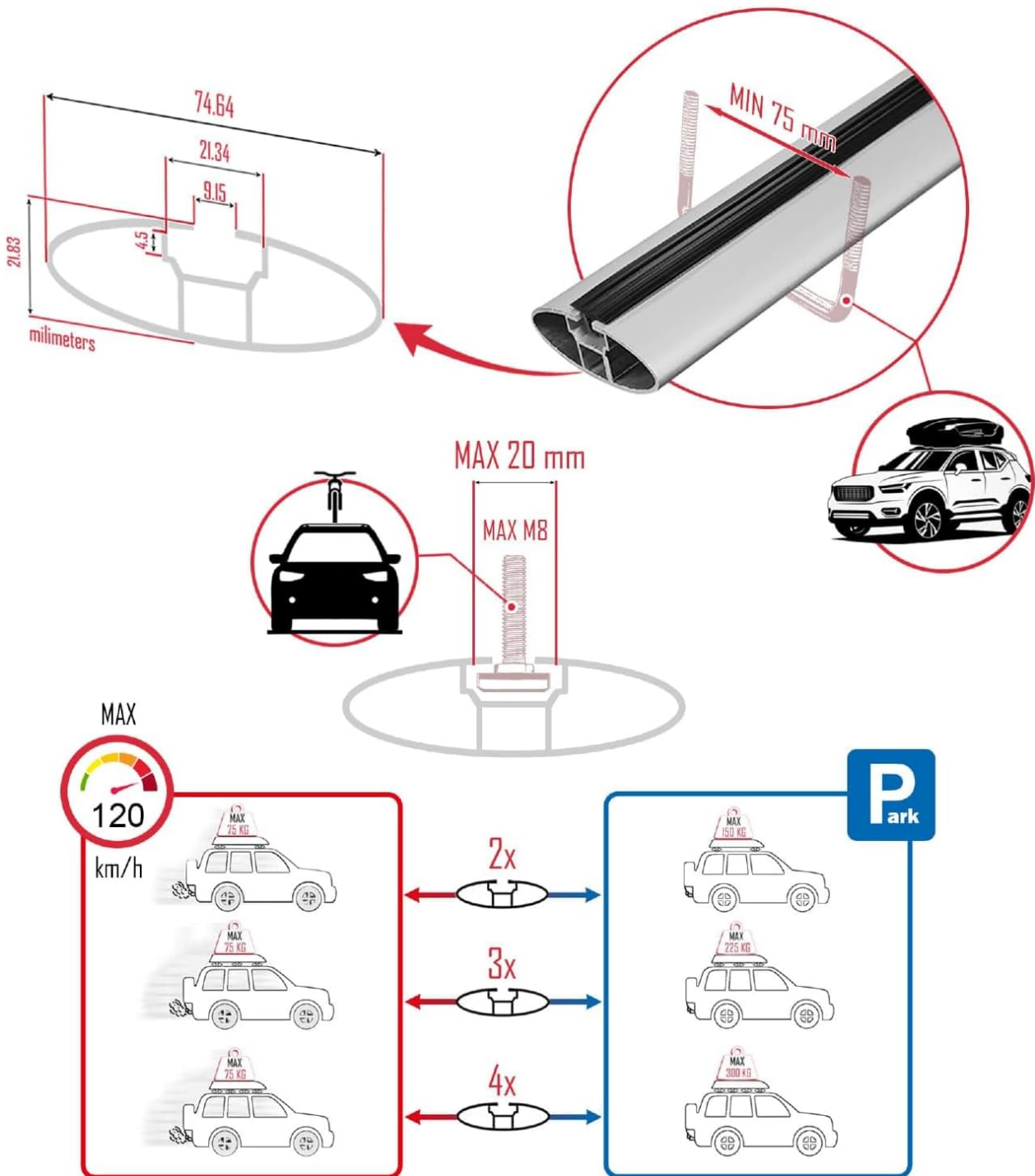


Image 2.1: Load Capacity and Speed Guidelines. This image details the maximum load limits for the roof rack system when the vehicle is moving (75 kg) and when parked (150 kg for 2 bars, 225 kg for 3 bars, 300 kg for 4 bars), along with a maximum recommended speed of 120 km/h.

3. PACKAGE CONTENTS

Please verify that all components are present in your package before beginning installation.

- 3 x Aluminium Bars (compatible with Mercedes Vito Tourer W447)
- 1 x Connection Kit for 1 vehicle (for 3 aluminium bars), including:



Image 3.1: Exploded View of Roof Rack Components. This diagram illustrates the individual parts of the roof rack system, including the aerodynamic aluminum body, non-slip and anti-vibration load absorbers, and the extra safety lock mechanism.

4. SETUP AND INSTALLATION

The assembly of the acpar ACE-1 roof rack is designed to be straightforward and can typically be completed by one person without professional assistance. No cutting of the aluminum bars is required if the correct product for your vehicle model has been purchased.

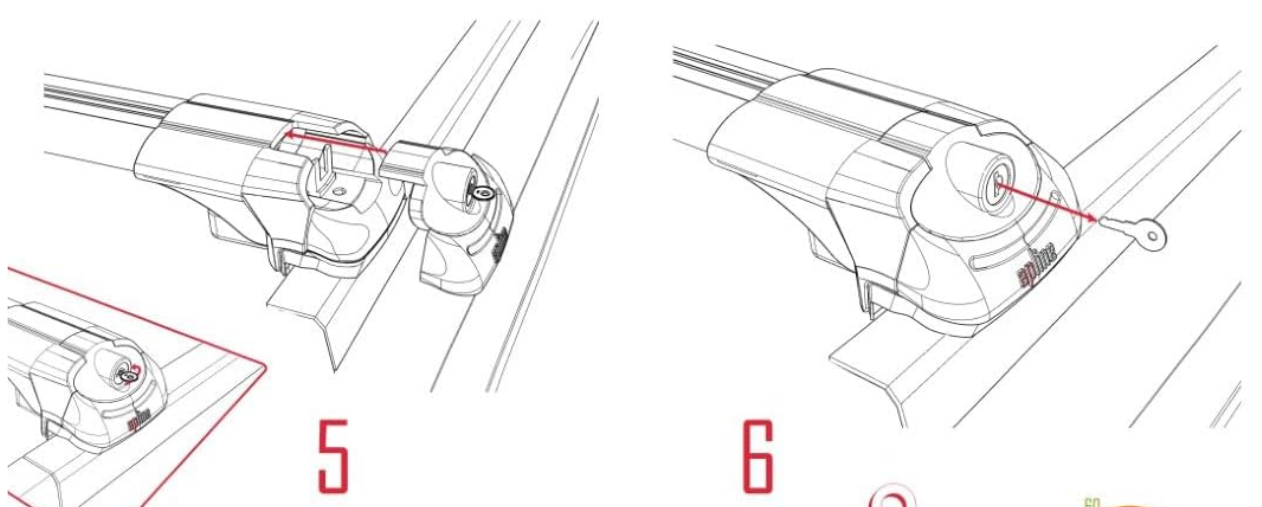
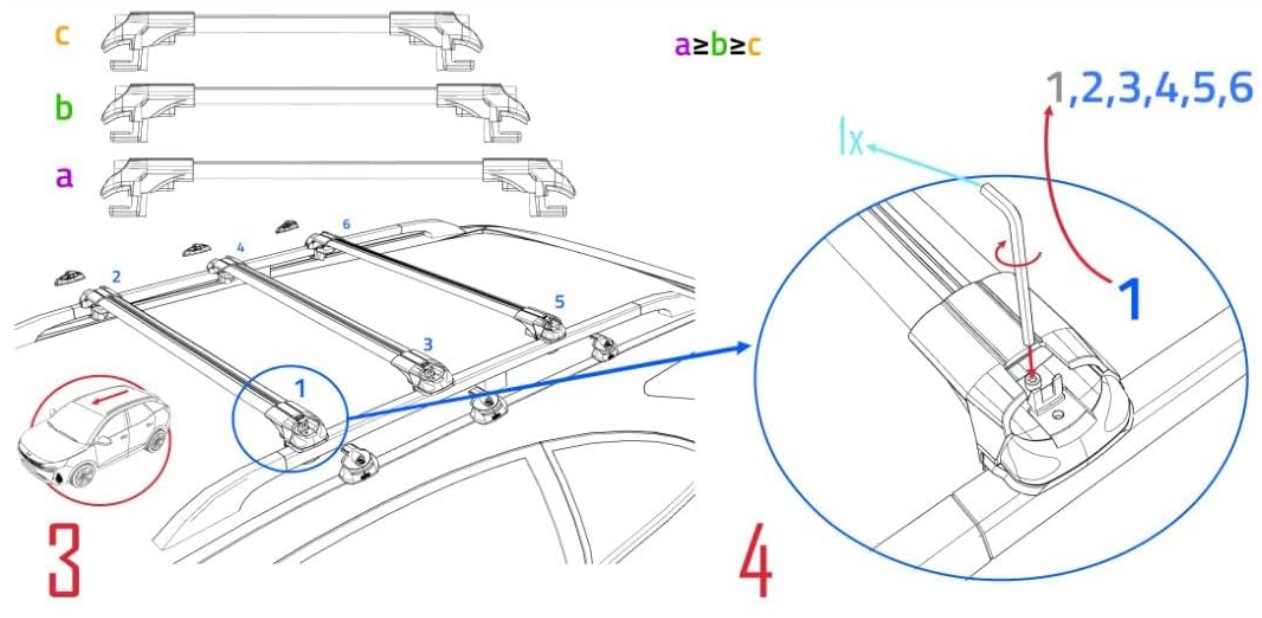
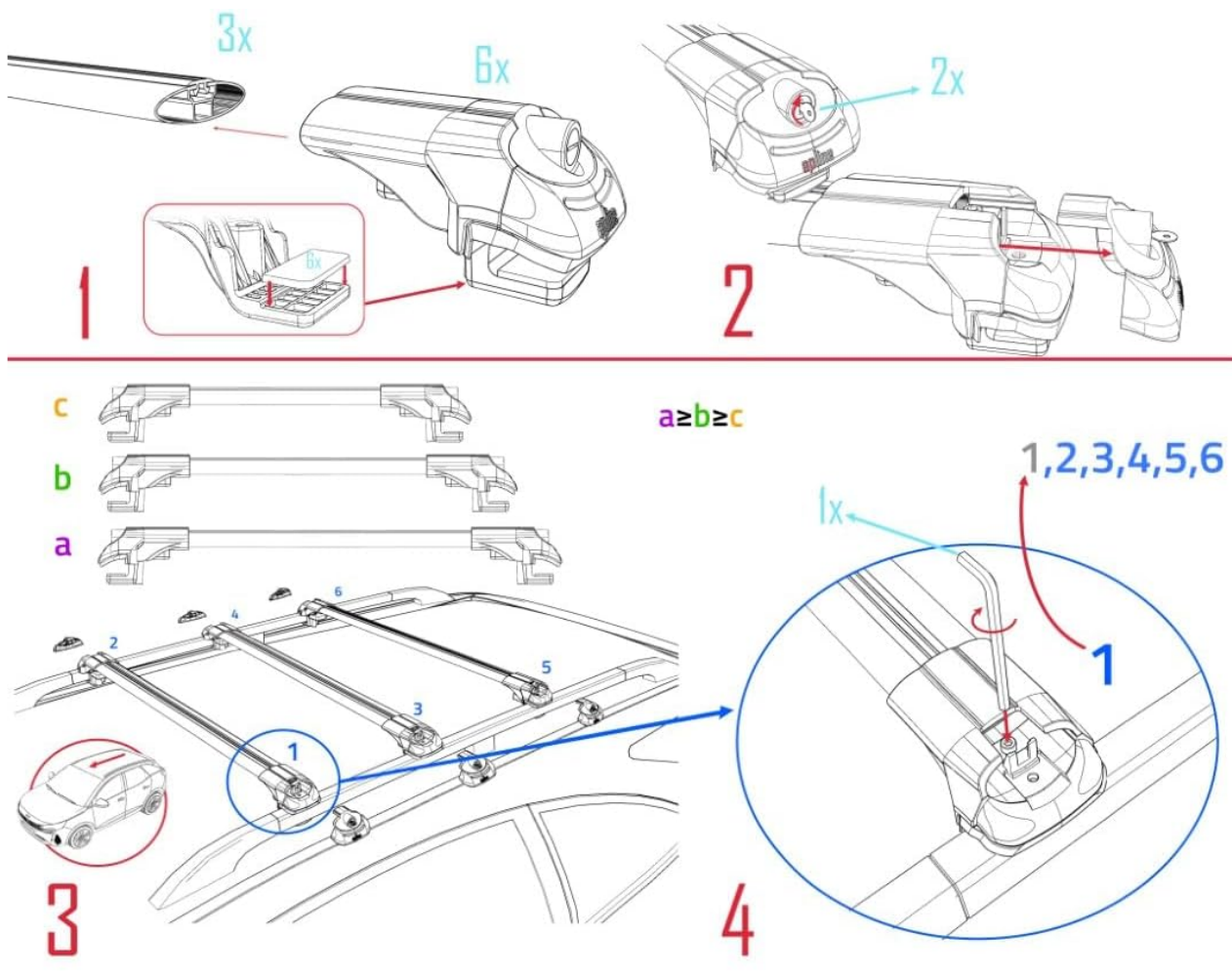
4.1. Pre-Installation Check

1. Unpack all components and verify against the package contents list.
2. Ensure your vehicle's roof rails are clean and free from debris.
3. Identify the front, middle, and rear positions on your vehicle's roof rails for optimal bar placement.

4.2. Installation Steps

Refer to Image 4.1 for a visual guide to the installation process.

1. **Step 1: Prepare the Connection Bodies.** Attach the auxiliary connection kit components (load absorbers, non-slip pads) to the main connection bodies as shown in the diagram. Ensure they are securely fitted to prevent movement and protect your vehicle's roof rails.
2. **Step 2: Attach Connection Bodies to Bars.** Slide the prepared connection bodies onto the ends of each aluminum bar. The bars are designed to fit snugly.
3. **Step 3: Position Bars on Roof Rails.** Carefully place the assembled bars onto your vehicle's roof rails. Ensure the connection bodies align with the roof rails and are evenly spaced.
4. **Step 4: Secure the Bars.** Using the provided spanners, tighten the securing bolts on each connection body. Work systematically, tightening each side gradually to ensure even pressure and a secure fit. Do not overtighten.
5. **Step 5: Install Locked Covers.** Once the bars are securely fastened, attach the locked covers over the connection bodies. These covers provide an extra layer of security and act as a deterrent against theft.
6. **Step 6: Lock the System.** Use the provided keys to lock each cover. Keep the keys in a safe place. The system cannot be disassembled without these keys.



ACE-101 / 106 - 3X
accessorypart



Image 4.1: Installation Steps. This visual guide demonstrates the sequence for assembling and mounting the roof rack system onto your vehicle's roof rails.

5. OPERATING INSTRUCTIONS

Once installed, your acpar ACE-1 roof rack is ready for use. Follow these guidelines for safe operation.

5.1. Loading the Roof Rack

- Always ensure the load is evenly distributed across the bars.
- Secure items using appropriate straps or tie-downs. Ensure there is no movement or shifting of the load.
- Avoid placing items that obstruct your view or interfere with vehicle operation.
- Be mindful of the increased height of your vehicle when loaded, especially when entering garages, car washes, or low-clearance areas.

5.2. Driving with a Loaded Roof Rack

- The vehicle's handling characteristics may change with a loaded roof rack. Drive cautiously and adjust your speed.
- Increased wind resistance may affect fuel consumption.
- Periodically check the security of your load and the roof rack mounting during long trips.

6. MAINTENANCE

Regular maintenance will ensure the longevity and safe operation of your roof rack system.

- **Cleaning:** Clean the aluminum bars and plastic components with mild soap and water. Avoid abrasive cleaners or solvents that could damage the anodized finish or plastic.
- **Inspection:** Periodically inspect all components for signs of wear, damage, or corrosion. Check that all bolts and fasteners are tight.
- **Storage:** If removing the roof rack for extended periods, store it in a dry, protected area to prevent environmental damage.

7. TROUBLESHOOTING

This section addresses common issues you might encounter.

- **Issue: Roof rack feels loose after installation.**
 - **Solution:** Re-check all securing bolts and ensure they are tightened evenly. Confirm that the auxiliary connection kit components (pads) are correctly seated on the roof rails.
- **Issue: Excessive wind noise.**
 - **Solution:** Ensure the bars are correctly positioned and all components are tightly secured. Aerodynamic design minimizes noise, but some noise is normal, especially with certain loads.
- **Issue: Cannot remove the roof rack.**
 - **Solution:** Ensure all safety locks are disengaged using the provided keys. Then, loosen the securing bolts.

8. SPECIFICATIONS

Feature	Detail
Brand	acpar
Model Name	ACE-1
Item Model Number	U01-UN-35-00-G_AC1-319-3lu*ACR
Compatibility	Mercedes Vito Tourer (W447) 2014-2025 (with roof rails having a gap)

Feature	Detail
Material	Aluminium (anodized finish), High Quality Plastic
Color	Grey Aluminium, Black Plastic
Number of Bars	3
Maximum Load (Moving)	75 kg (165 lbs)
Maximum Load (Parked, 3 bars)	225 kg (496 lbs)
Recommended Max Speed (Loaded)	120 km/h (75 mph)
Item Weight	8.8 pounds (approx. 4 kg)
Product Dimensions (packaging)	39.37 x 3.94 x 7.87 inches (approx. 100 x 10 x 20 cm)
Special Features	Extra Safety Lock, Aerodynamic Design, Non-Slip, Anti-Vibration, UV Resistance
Origin	Made in Türkiye
ASIN	B0CDV3H5CW

ACPAR

BARRES DE TECHO
DACHTRÄGER
BARRES DE TOIT
ARA ATKI
BARRE PORTATUTTO
CROSS BAR

AERODYNAMIC

SECURE / EXTRA STRONG

VEHICLE SPECIFIC DESIGN

WEATHERPROOF



Image 8.1: Key Features of the acpar ACE-1 Roof Rack. This image emphasizes the aerodynamic, secure, vehicle-specific, and weatherproof attributes of the cross bars.

9. WARRANTY AND SUPPORT

For warranty information or technical support, please refer to the documentation provided at the time of purchase or contact the manufacturer directly. The product is manufactured by acpar.

For further assistance, you may contact the seller, ACPAR DESIGN, through the platform where the product was purchased.