

[Manuals.plus](#) /

> [Black & Decker](#) /

> Black & Decker TS4130-B5 3-in-1 Grill, Waffle, and Sandwich Maker Instruction Manual

Black & Decker TS4130-B5

Black & Decker TS4130-B5 3-in-1 Grill, Waffle, and Sandwich Maker Instruction Manual

Model: TS4130-B5

1. INTRODUCTION

This manual provides essential instructions for the safe and efficient operation, maintenance, and care of your Black & Decker TS4130-B5 3-in-1 appliance. This versatile unit functions as a grill, waffle maker, and sandwich maker, featuring interchangeable non-stick plates for various culinary tasks. Please read this manual thoroughly before first use and retain it for future reference.



Figure 1: The Black & Decker TS4130-B5 3-in-1 appliance in its closed, compact form. This image displays the sleek black exterior with indicator lights and the central latch mechanism.

2. IMPORTANT SAFETY INSTRUCTIONS

When using electrical appliances, basic safety precautions should always be followed to reduce the risk of fire, electric shock, and/or injury to persons, including the following:

1. Read all instructions.
2. Do not touch hot surfaces. Use handles or knobs.
3. To protect against electrical shock, do not immerse cord, plugs, or appliance in water or other liquid.
4. Close supervision is necessary when any appliance is used by or near children.
5. Unplug from outlet when not in use and before cleaning. Allow to cool before putting on or taking off parts, and before cleaning the appliance.
6. Do not operate any appliance with a damaged cord or plug, or after the appliance malfunctions or has been damaged in any manner. Contact customer support for examination, repair, or adjustment.
7. The use of accessory attachments not recommended by the appliance manufacturer may cause injuries.
8. Do not use outdoors.
9. Do not let cord hang over edge of table or counter, or touch hot surfaces.
10. Do not place on or near a hot gas or electric burner, or in a heated oven.
11. Extreme caution must be used when moving an appliance containing hot oil or other hot liquids.
12. Always attach plug to appliance first, then plug cord into the wall outlet. To disconnect, turn any control to "off," then remove plug from wall outlet.
13. Do not use appliance for other than intended use.

3. PRODUCT OVERVIEW AND COMPONENTS

The Black & Decker TS4130-B5 is designed for versatility, featuring a robust stainless steel construction and a powerful 1400W heating element. Key components include:

- Main Appliance Body with integrated heating elements.
- Interchangeable Non-Stick Plates: Grill, Waffle, and Sandwich.
- Power Indicator Light (Red).
- Ready Indicator Light (Green).
- Cool-touch Handle with locking latch.



Figure 2: The three types of interchangeable non-stick plates included with the appliance: sandwich plates (left), grill plates (center), and waffle plates (right).



Figure 3: The appliance shown in an open position with the grill plates securely installed. This view highlights the non-stick surface and the heating elements.

4. SETUP AND FIRST USE

1. **Unpacking:** Carefully remove the appliance and all accessories from the packaging. Dispose of packaging materials responsibly.
2. **Initial Cleaning:** Before first use, wipe the exterior of the appliance with a damp cloth. Wash the interchangeable plates with warm, soapy water, rinse thoroughly, and dry completely.
3. **Installing Plates:** Ensure the appliance is unplugged and cool. Select the desired plates (grill, waffle, or sandwich). Align the tabs on the back of the plates with the slots on the appliance's heating

elements. Press down firmly until the plates click into place. Repeat for both upper and lower plates.

4. **Pre-heating:** For the first use, it is recommended to operate the appliance empty for approximately 10 minutes to burn off any manufacturing residues. A slight odor or smoke may be present; this is normal. Ensure adequate ventilation.
5. **Cool Down:** Allow the appliance to cool completely after the initial burn-off cycle before proceeding with food preparation.

5. OPERATING INSTRUCTIONS

The appliance features a 90-degree and 180-degree opening capability, allowing for versatile cooking options, including open grilling.

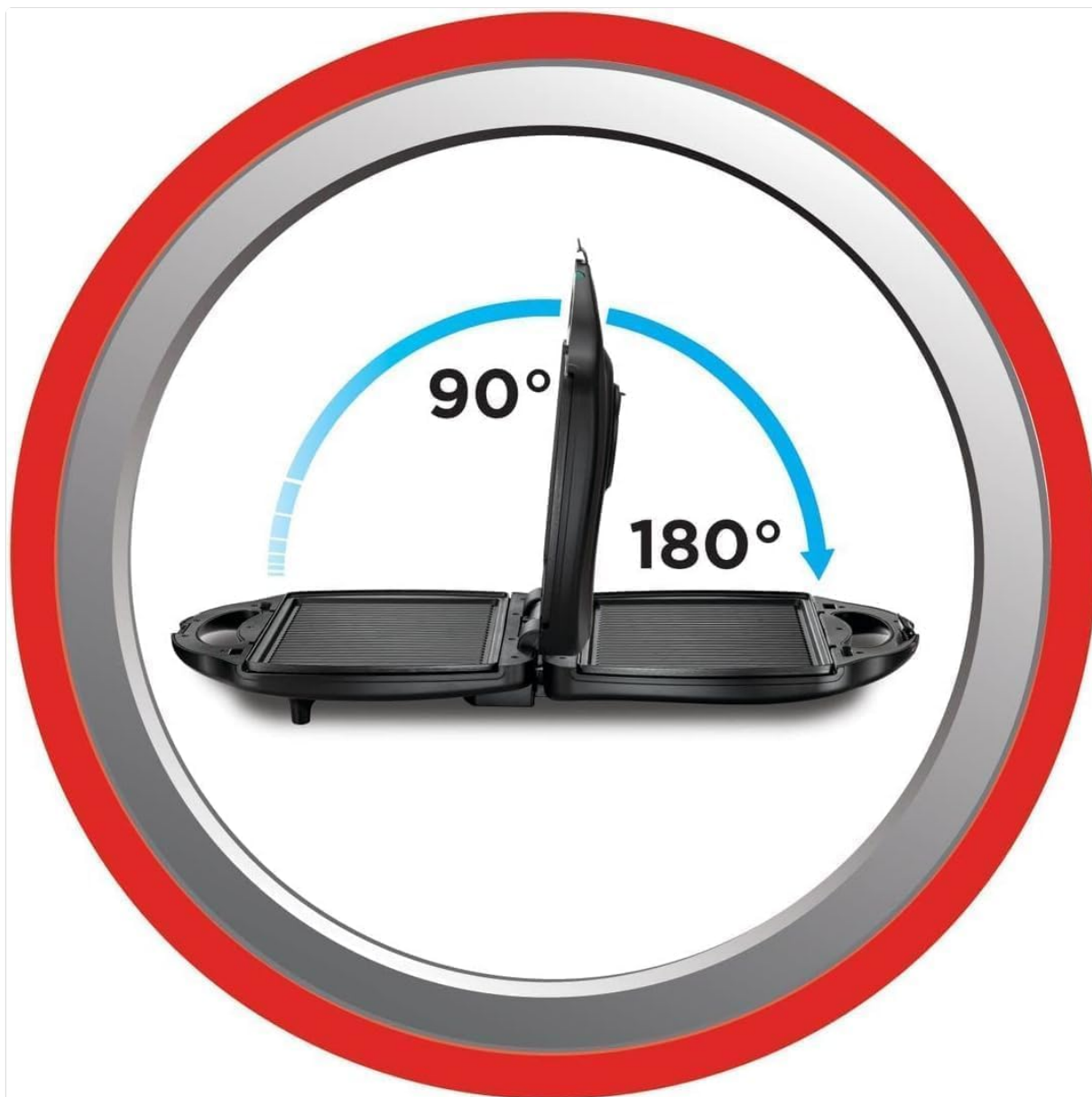


Figure 4: Illustration demonstrating the appliance's ability to open to a 90-degree angle for standard cooking and a full 180-degree angle for open grilling.

General Operation

1. Ensure the desired plates are securely installed.
2. Close the appliance and plug it into a standard electrical outlet. The red power indicator light will illuminate.

3. Allow the appliance to preheat. The green 'ready' indicator light will illuminate when the optimal cooking temperature is reached. This typically takes 3-5 minutes.
4. Once preheated, carefully open the appliance and place your food on the lower plate.
5. Close the appliance. For sandwiches and waffles, ensure the latch is secured. For grilling, you may choose to leave it open at 180 degrees.
6. Cook until desired doneness is achieved. Cooking times will vary based on food type and thickness.
7. Use heat-resistant plastic or wooden utensils to remove food to avoid damaging the non-stick coating.
8. Unplug the appliance after use and allow it to cool completely before cleaning or storing.

Specific Plate Usage

- **Grill Plates:** Ideal for grilling meats, vegetables, paninis, and sandwiches. The 180-degree open position allows for a larger grilling surface, similar to a contact grill.
- **Waffle Plates:** Perfect for making crispy waffles. Lightly grease the plates before adding batter for best results and easy removal.
- **Sandwich Plates:** Designed to seal and toast sandwiches, creating perfectly portioned and sealed pockets.



Figure 5: A display of various dishes, including waffles, grilled meats, and toasted sandwiches, illustrating the versatility of the Black & Decker 3-in-1 appliance.

6. CLEANING AND MAINTENANCE

Proper cleaning and maintenance will extend the life of your appliance.

1. **Always Unplug:** Ensure the appliance is unplugged from the power outlet and completely cool before cleaning.
2. **Removing Plates:** Press the plate release buttons (if applicable) and carefully lift the plates off the heating elements.
3. **Cleaning Plates:** Wash the non-stick plates with warm, soapy water using a soft sponge or cloth. For stubborn food residue, soak the plates in warm water for a few minutes before cleaning. Do not use abrasive cleaners, metal scouring pads, or sharp utensils, as these can damage the non-stick coating. The plates are not dishwasher safe.
4. **Cleaning Exterior:** Wipe the exterior of the appliance with a damp cloth. Do not immerse the appliance body in water or any other liquid.
5. **Drying:** Ensure all parts are thoroughly dry before reassembling or storing the appliance.
6. **Storage:** Store the appliance in a clean, dry place.

7. TROUBLESHOOTING

Problem	Possible Cause	Solution
Appliance does not turn on.	Not plugged in; power outlet malfunction.	Ensure plug is securely in a working outlet. Check household fuse/circuit breaker.
Green 'ready' light does not illuminate.	Appliance not fully preheated; faulty sensor.	Allow more time for preheating (3-5 minutes). If problem persists, contact customer support.
Food sticks to plates.	Plates not properly greased; damaged non-stick coating.	Lightly grease plates with cooking oil or butter before adding food. Ensure plates are clean. Avoid using metal utensils.
Smoke or odor during initial use.	Manufacturing residues burning off.	This is normal for first use. Ensure good ventilation. If excessive or persistent, unplug and contact support.

8. SPECIFICATIONS

Feature	Detail
Model Number	TS4130-B5
Power / Wattage	1400 W
Material	Stainless Steel
Special Features	Interchangeable Cooking Surfaces (Grill, Waffle, Sandwich)

Feature	Detail
Included Components	Grill Plate, Waffle Plate, Sandwich Plate
Item Weight	80 g (Note: This weight seems unusually low for the entire appliance and may refer to a specific component. Please refer to product packaging for accurate total weight.)
Product Dimensions	1 x 1 x 1 cm (Note: These dimensions seem unusually small and may refer to packaging or a specific component. Please refer to product packaging for accurate appliance dimensions.)

9. WARRANTY AND SUPPORT

This product is covered by a manufacturer's warranty against defects in materials and workmanship. For specific warranty terms, duration, and conditions, please refer to the warranty card included with your purchase or contact Black & Decker customer support. For technical assistance, spare parts, or service inquiries, please visit the official Black & Decker website or contact their authorized service centers in your region.