

Danfoss 077B2317L

Danfoss Thermostat 25T65 077B2317L Freezer Instruction Manual

1. INTRODUCTION

This manual provides essential information for the installation, operation, and maintenance of the Danfoss Thermostat 25T65 077B2317L. This component is designed as a replacement part for various freezer and combined refrigerator models. Please read these instructions carefully before proceeding with installation or use to ensure proper function and safety.

2. SAFETY INFORMATION

Always prioritize safety when working with electrical appliances. Improper installation or handling can lead to electric shock, injury, or damage to the appliance.

- **Disconnect Power:** Before any installation, maintenance, or repair, ensure the appliance is completely disconnected from the main power supply.
- **Qualified Personnel:** Installation and replacement should ideally be performed by a qualified technician.
- **Handle with Care:** The capillary tube is delicate. Avoid bending it sharply or damaging its insulation, as this can affect thermostat performance.
- **Electrical Connections:** Ensure all electrical connections are secure and correctly wired according to the appliance's wiring diagram.
- **Environmental Conditions:** Do not expose the thermostat to excessive moisture or extreme temperatures outside its operating range.

3. PRODUCT DESCRIPTION AND FEATURES

The Danfoss 25T65 077B2317L is a mechanical thermostat manufactured in Europe, specifically designed for temperature control in freezers and combined refrigerators. It features a long capillary tube for precise temperature sensing and a signaling contact that activates when the temperature rises above a set point, indicating a potential issue or defrost cycle.

Key Features:

- Model: 077B2317L
- Capillary Length: 2600 mm
- Electrical Connections: 6.3 mm / 4.8 mm terminals
- Special Function: Signaling contact for temperature increase
- Compatibility: Suitable for various models including R5351A, KB2039, K59L1137, 59KL1141, 077B6429, and 077B2317.

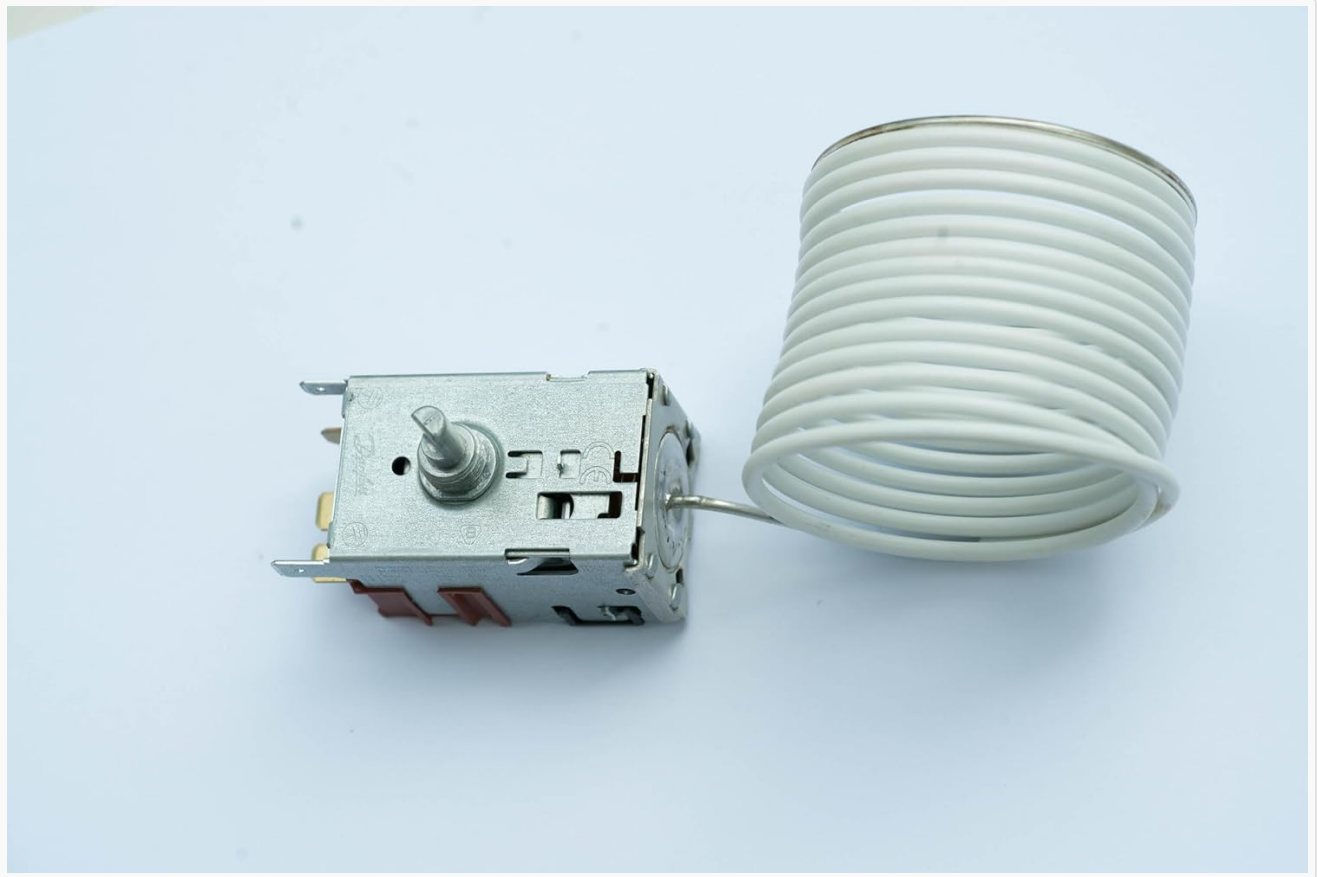


Image 1: Overview of the Danfoss 077B2317L thermostat, showing the main body and the coiled capillary tube.

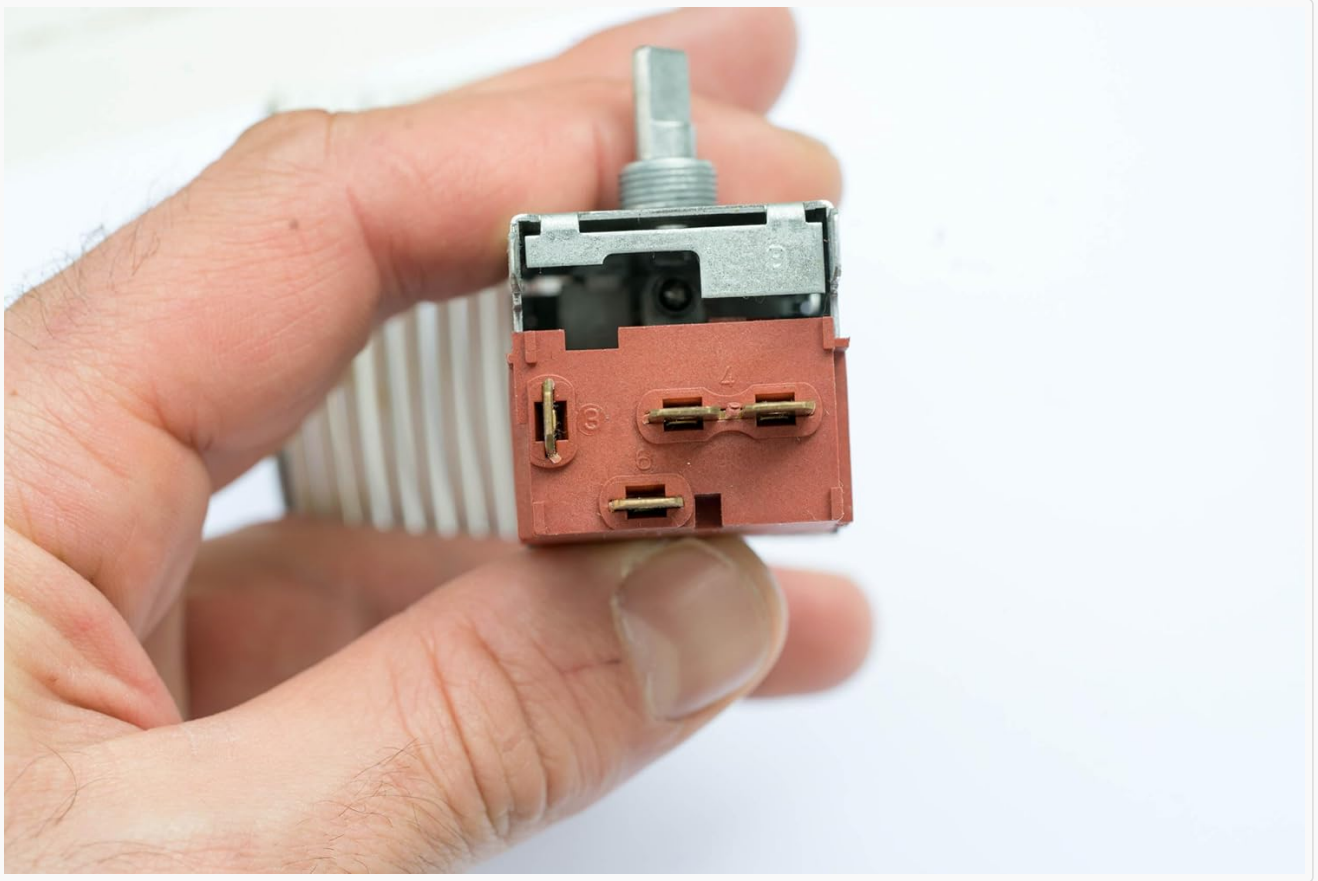


Image 3: Side view of the thermostat, highlighting the electrical connection terminals.

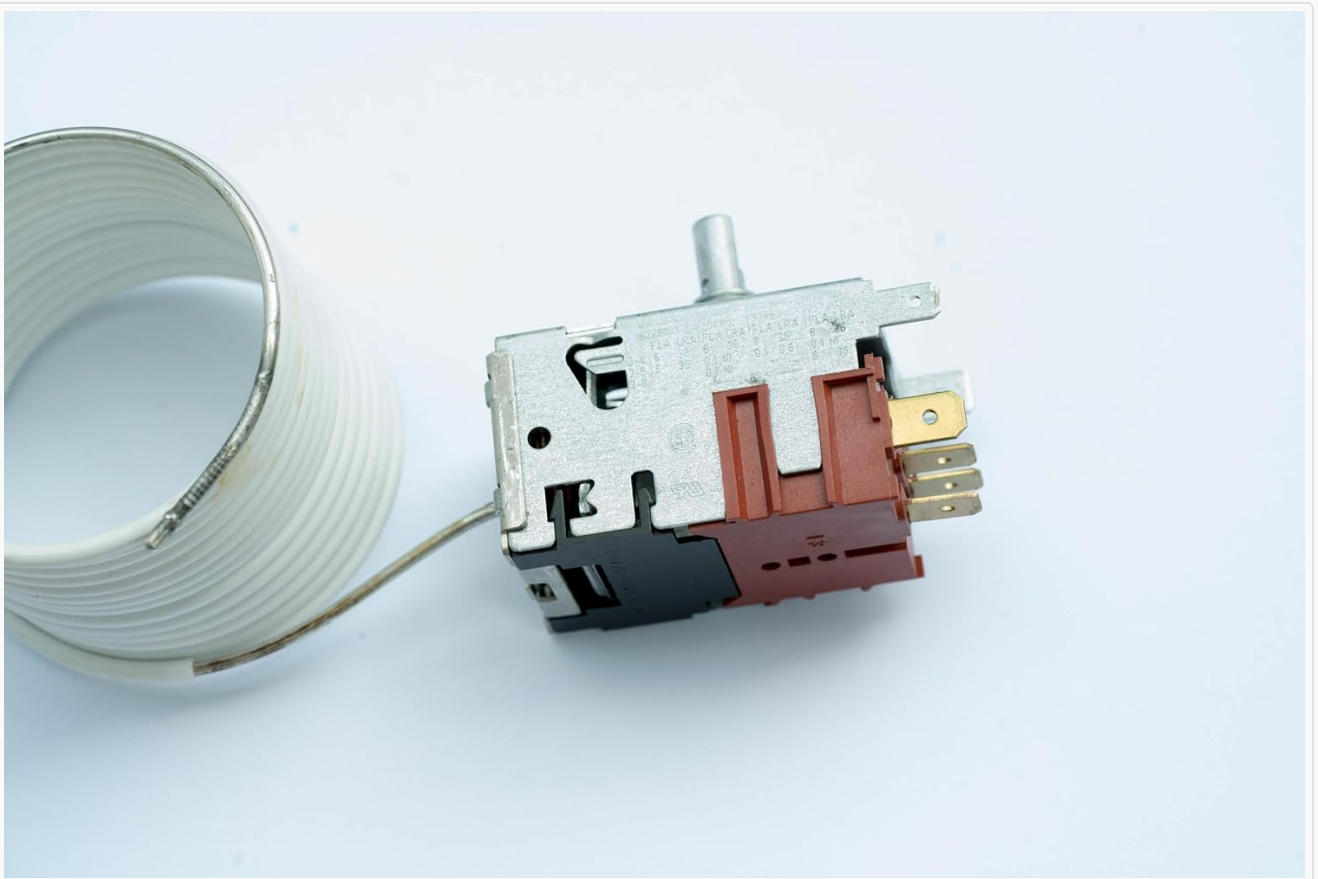


Image 4: Another side view, providing a clearer look at the various electrical terminals for wiring.

5. OPERATING INSTRUCTIONS

Once installed, the Danfoss 25T65 077B2317L thermostat operates automatically to maintain the set temperature within your freezer or refrigerator. Most appliances with this type of thermostat will have an external or internal dial for temperature adjustment.

- **Temperature Setting:** Adjust the temperature dial (if present on your appliance) to your desired coldness level. Typically, a higher number on the dial indicates a colder setting.
- **Monitoring:** Allow several hours for the appliance to reach the new temperature setting. Use an appliance thermometer to verify the internal temperature.
- **Signaling Contact:** The integrated signaling contact will activate if the temperature inside the appliance rises significantly, which can occur during defrost cycles or if there is a malfunction. This contact can be wired to an indicator light or alarm system, depending on the appliance's design.

6. MAINTENANCE

The Danfoss 25T65 077B2317L thermostat is designed for reliable, long-term operation with minimal maintenance. However, periodic checks can help ensure optimal performance.

- **Visual Inspection:** Periodically inspect the thermostat and its capillary tube for any signs of physical damage, corrosion, or loose connections.
- **Cleanliness:** Ensure the area around the thermostat and the capillary tube's sensing point is free from ice buildup or debris, which could interfere with accurate temperature sensing.
- **Professional Check:** If you suspect a problem, have a qualified technician inspect the thermostat and the appliance's refrigeration system.

7. TROUBLESHOOTING

If your appliance is not maintaining the correct temperature after thermostat replacement, consider the following:

Problem	Possible Cause	Solution
Appliance not cooling at all	No power, faulty wiring, compressor issue, or completely failed thermostat.	Check power supply. Verify wiring connections. Consult a technician for compressor or thermostat testing.
Appliance too warm	Thermostat set too high, capillary tube improperly placed, or thermostat malfunction.	Adjust temperature setting. Ensure capillary tube is correctly positioned. If problem persists, thermostat may need replacement.
Appliance too cold / constantly running	Thermostat set too low, capillary tube dislodged, or thermostat stuck in 'on' position.	Adjust temperature setting. Verify capillary tube placement. If problem persists, thermostat may need replacement.
Signaling contact constantly active	High internal temperature, defrost cycle, or faulty signaling contact.	Check appliance temperature. Observe if it's during a defrost cycle. If not, investigate cooling system or thermostat.

If troubleshooting steps do not resolve the issue, it is recommended to contact a qualified service technician.

8. SPECIFICATIONS

Specification	Detail
Brand	Danfoss
Model Number	077B2317L
Manufacturer Reference	077B2317L
Type	Mechanical Capillary Thermostat
Capillary Length	2600 mm
Connections	6.3 mm / 4.8 mm terminals
Approximate Dimensions (L x W x H)	60 x 30 x 25 mm
Special Feature	Signaling contact for temperature increase
Material	Stainless Steel (exterior)
Compliance	EN 60730-2-9 (as per product title)

9. WARRANTY INFORMATION

Specific warranty details for replacement parts like the Danfoss 25T65 077B2317L thermostat typically depend on the retailer or the manufacturer's general policy for spare parts. Please refer to your purchase documentation or contact the seller for precise warranty terms and conditions. Keep your proof of purchase for any warranty claims.

10. SUPPORT

For technical assistance, installation guidance, or troubleshooting beyond the scope of this manual, please contact the retailer from whom you purchased the thermostat or a certified appliance repair professional. When seeking support, have your product model number (077B2317L) and any relevant appliance information readily available.

11. PRODUCT IMAGES

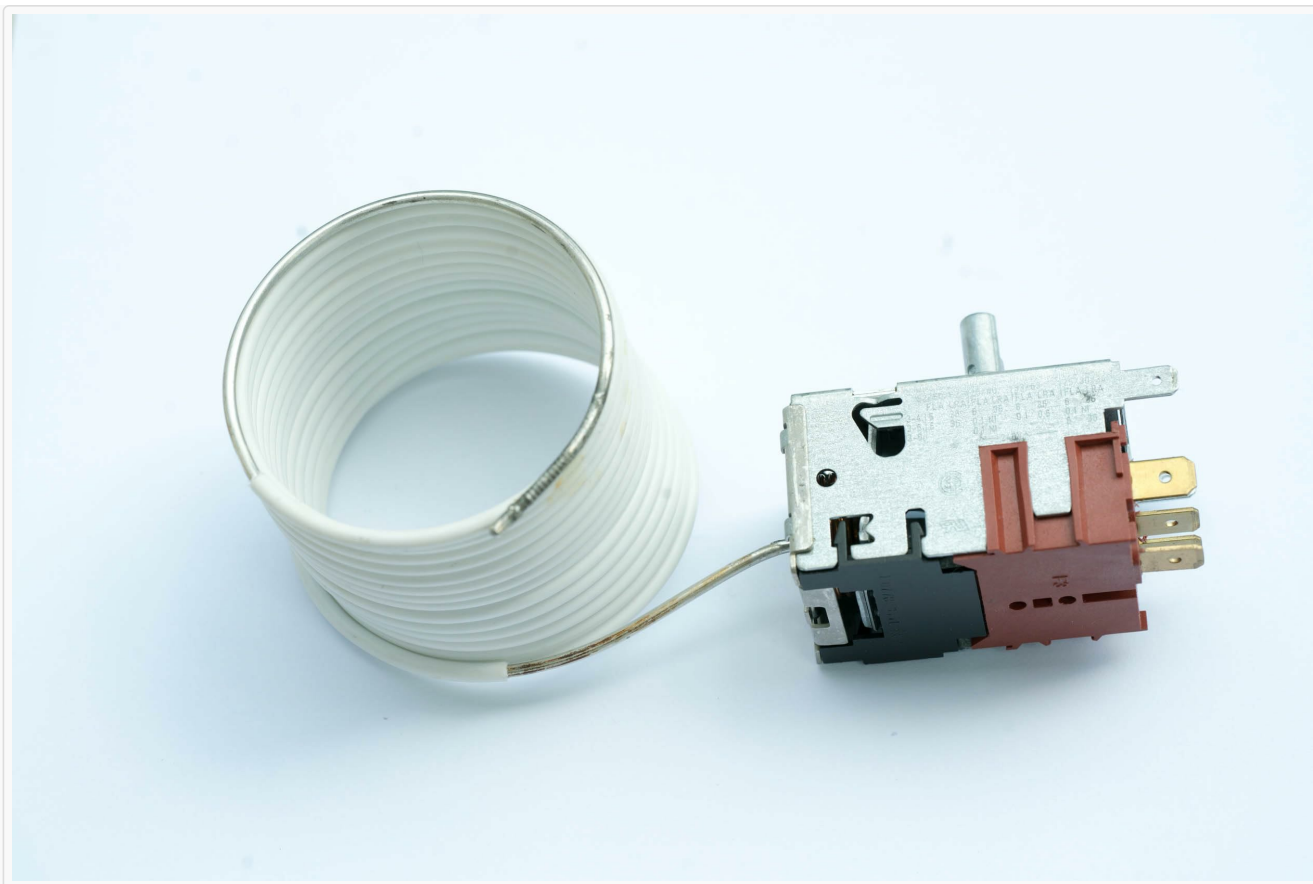


Image 5: Top view of the Danfoss 077B2317L thermostat, showing the main body and mounting points.

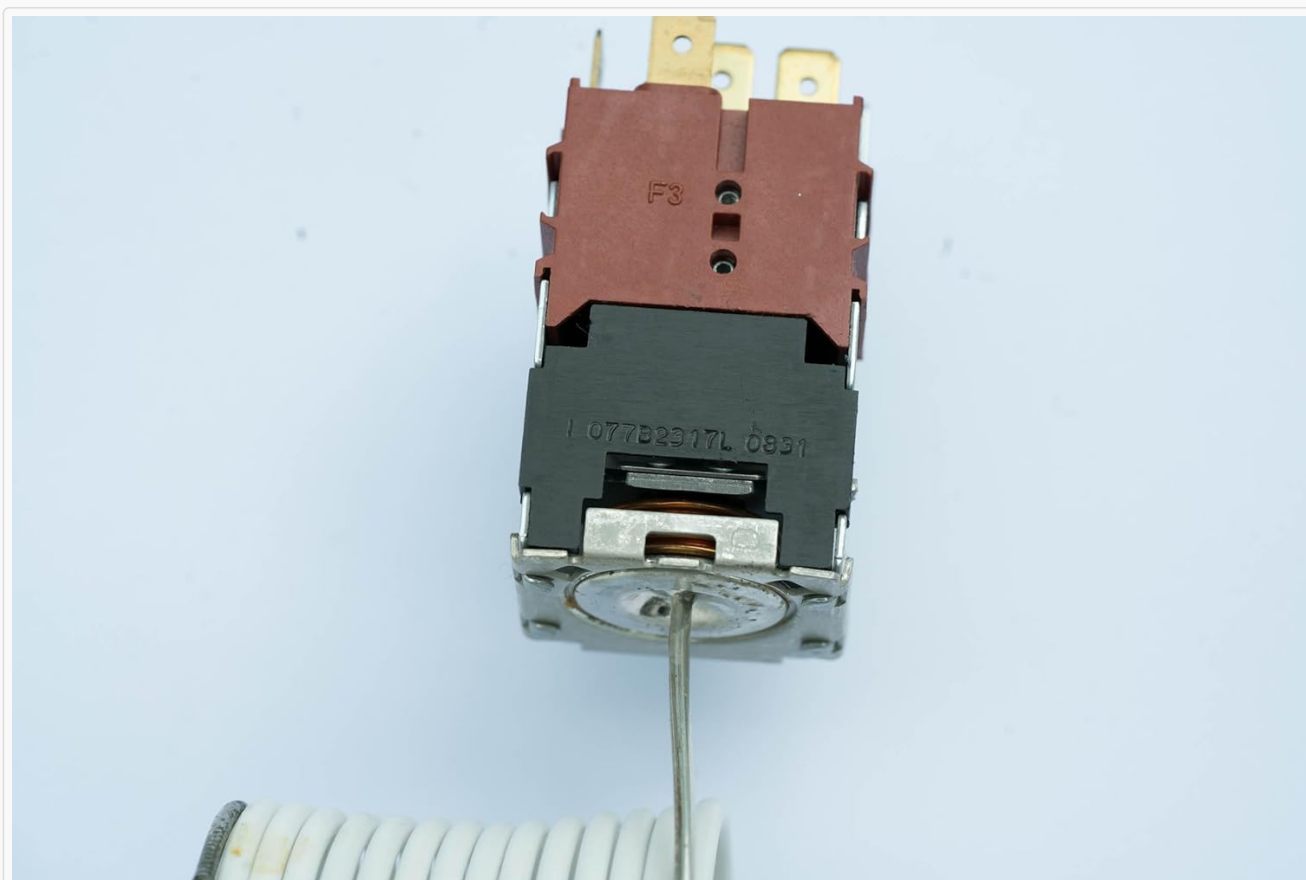


Image 6: General perspective view of the thermostat, highlighting its compact design.

12. OFFICIAL PRODUCT VIDEOS

No official product videos from the seller are available for this item.



© 2023 Danfoss. All rights reserved.