

Manuals+

[Q & A](#) | [Deep Search](#) | [Upload](#)

manuals.plus /

> [BaBylissPRO](#) /

> [BaBylissPRO Nano Titanium Professional Curling Iron BNTWRB125XLUC User Manual](#)

BaBylissPRO BNTWRB125XLUC

BaBylissPRO Nano Titanium Professional Curling Iron User Manual

Model: BNTWRB125XLUC

1. INTRODUCTION

Thank you for choosing the BaBylissPRO Nano Titanium Professional Curling Iron. This appliance is designed to provide professional-grade hair styling with advanced technology for optimal results. Please read this manual thoroughly before use to ensure safe and effective operation.



Image 1: The BaBylissPRO Nano Titanium Professional Curling Iron, 1 1/4 inch, in iridescent finish.

2. IMPORTANT SAFETY INSTRUCTIONS

When using electrical appliances, especially when children are present, basic safety precautions should always be followed, including the following:

- **DANGER:** Keep away from water. As with most electrical appliances, electrical parts are electrically live even when the switch is off.
- Always unplug the appliance immediately after use.
- Do not use while bathing or in a shower.
- Do not place or store appliance where it can fall or be pulled into a tub or sink.
- Do not place in or drop into water or other liquid.
- If an appliance falls into water, unplug it immediately. Do not reach into the water.
- **WARNING:** To reduce the risk of burns, electrocution, fire, or injury to persons:
- This appliance should never be left unattended when plugged in.

- Do not pull, twist, or wrap line cord around appliance.
- This appliance is not intended for use by persons (including children) with reduced physical, sensory or mental capabilities, or lack of experience and knowledge, unless they have been given supervision or instruction concerning use of the appliance by a person responsible for their safety.
- Children should be supervised to ensure that they do not play with the appliance.
- Use this appliance only for its intended use as described in this manual. Do not use attachments not recommended by the manufacturer.
- Never operate this appliance if it has a damaged cord or plug, if it is not working properly, or if it has been dropped or damaged, or dropped into water. Return the appliance to an authorized service center for examination and repair.
- Keep the cord away from heated surfaces.
- Never use while sleeping.
- Never drop or insert any object into any opening.
- Do not use outdoors or operate where aerosol (spray) products are being used or where oxygen is being administered.
- Unit is hot when in use. Do not let heated surfaces touch eyes or skin.
- Do not place the heated unit directly on any surface while it is operating or cooling.
- Never block the air openings of the appliance or place it on a soft surface, such as a bed or couch, where the air openings may be blocked. Keep the air openings free of lint, hair, and the like.
- Do not use an extension cord with this appliance.
- Do not touch hot surfaces of the appliance. Use handles or knobs.
- Before plugging in, read the information about dual voltage contained in the operating instructions section.

3. PRODUCT FEATURES

The BaBylissPRO Nano Titanium Professional Curling Iron is engineered with advanced features for superior styling:

- **Extended Barrel:** 2 inches longer than traditional curling barrels, ideal for styling longer hair.
- **Nano Titanium Technology:** Provides even heat distribution and retention, ensuring consistent styling and a smooth, shiny finish.
- **Digital Temperature Control:** Offers 5 precise heat settings up to 430°F (221°C) to suit all hair types.
- **Dual Voltage:** Compatible with 120V and 240V for worldwide use.
- **Cool Tip:** Designed for safe finger placement during styling.
- **Ultra-Lightweight Design:** Enhances comfort during extended use.
- **8-Foot Swivel Cord:** Provides flexibility and ease of movement, preventing tangles.



The definitive professional brand

Respected and admired throughout the world. BaBylissPRO® Nano Titanium™ professional tools are ultra-lightweight and durable. Styling surfaces are strong, corrosion resistant, and ultra-smooth. Heat is evenly distributed and maintained at constant temperature. Ionic technology reduces frizz for sleek and shiny results.

2 YEAR WARRANTY

Image 2: Key features of the BaBylissPRO Nano Titanium Extended Barrel Curling Iron.

4. SETUP

1. **Unpacking:** Carefully remove the curling iron from its packaging. Retain packaging for storage or future transport.
2. **Initial Inspection:** Inspect the appliance for any signs of damage. Do not use if the cord or plug is damaged.
3. **Power Connection:** Ensure your hands are dry. Plug the curling iron into a suitable electrical outlet. The appliance is dual voltage (120V/240V) and will automatically adjust. An adapter may be required for international outlets, but a voltage converter is not needed.

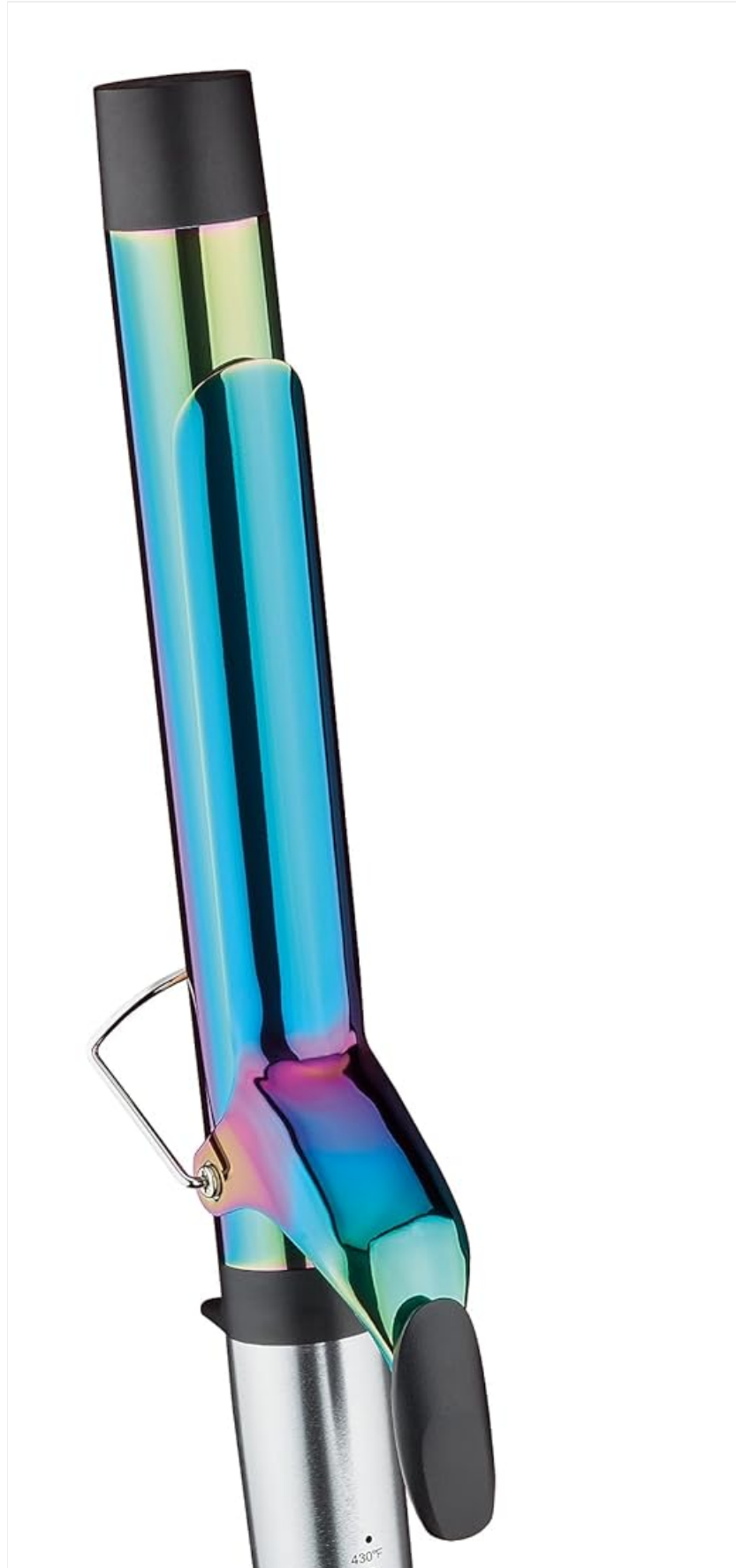




Image 3: Front view of the curling iron, ready for setup.

5. OPERATING INSTRUCTIONS

5.1 Powering On and Temperature Selection

1. Plug the curling iron into an electrical outlet.
2. Press and hold the power button until the indicator light illuminates.
3. Use the temperature control buttons to select your desired heat setting. Refer to the 'Temperature Styling Guide' below for recommendations based on hair type.
4. Allow the iron to heat up completely before use. The digital display will indicate when the selected temperature is reached.

5.2 Curling Technique

1. Ensure hair is clean, dry, and detangled. For best results, apply a heat protectant spray.
2. Section your hair into manageable strands.
3. Open the clamp and place a section of hair between the clamp and the barrel, starting a few inches from the roots.
4. Close the clamp and gently glide the iron down the hair section, rotating the iron to wrap the hair around the barrel. Use the cool tip for stability.
5. Hold for a few seconds (duration depends on hair type and desired curl intensity).
6. Release the clamp and gently slide the iron out, allowing the curl to fall.
7. Repeat for all sections of hair. Allow curls to cool before styling further for better hold.

5.3 Temperature Styling Guide

Select the appropriate temperature setting for your hair type:

Temperature	Hair Type
285°F (140°C)	Fragile, very fine hair
320°F (160°C)	Thin, easy-to-curl hair
355°F (180°C)	Medium-texture hair
395°F (200°C)	Wavy or curly hair

Temperature	Hair Type
430°F (221°C)	Coarse, very thick hair



The BaBylissPRO® Nano Titanium™ Extended Barrel curling irons are **2" longer** than traditional curling irons making them perfect for **creating curls** on longer hair.

- The **1"** is perfect for creating traditional curls and defined waves.
- The **1 ¼"** is perfect for creating medium loose curls and beachy waves.
- The **1 ½"** is perfect for big voluminous curls and loose relaxed waves.

Image 4: Temperature Styling Guide for various hair types.

5.4 Barrel Size Recommendations

The BaBylissPRO Nano Titanium Extended Barrel curling irons are 2 inches longer than traditional curling irons, making them perfect for creating curls on longer hair. Different barrel sizes achieve different curl types:

- **1 inch:** Ideal for traditional curls and defined waves.
- **1 1/4 inch (this model):** Perfect for medium loose curls and beachy waves.
- **1 1/2 inch:** Suitable for big voluminous curls and loose, relaxed waves.

285° F	Fragile, very fine hair	 <p>TEMPERATURE STYLING GAUGE</p>
320° F	Thin, easy-to-curl hair	
355° F	Normal textured hair	
395° F	Wavy or curly hair	
430° F	Coarse, very thick hair	

 <p>Nano Titanium Technology</p>	 <p>120V / 240V Dual Voltage</p>	 <p>Lightweight/ Ergonomic</p>
---	---	--

Image 5: Guide to selecting the appropriate barrel size for desired curl styles.

6. MAINTENANCE AND CARE

6.1 Cleaning

- Always unplug the appliance and allow it to cool completely before cleaning.
- Wipe the barrel and exterior surfaces with a damp cloth. Do not use abrasive cleaners or solvents.
- Ensure no moisture enters the electrical components.

6.2 Storage

- When not in use, store the appliance in a cool, dry place.
- Do not wrap the cord around the appliance. Allow it to hang freely or coil it loosely.
- Keep out of reach of children.

7. TROUBLESHOOTING

If you experience issues with your curling iron, refer to the following common troubleshooting steps:

- **Appliance not heating:** Ensure the curling iron is properly plugged into a functioning electrical outlet. Check if the power button has been pressed and held until the indicator light is on.
- **Inconsistent heat:** Verify that the selected temperature setting is appropriate for your hair type. Allow sufficient time for the iron to reach its set temperature.
- **Hair snagging:** Ensure hair is thoroughly detangled before use. Do not use on wet hair.

If the problem persists after attempting these steps, discontinue use and contact customer support.

8. SPECIFICATIONS

Specification	Detail
Model Number	BNTWRB125XLUC
UPC	074108475091
Brand	BaBylissPRO
Barrel Size	1 1/4 Inch (Extended)
Material	Nano Titanium
Color	Iridescent
Temperature Settings	Digital, up to 430°F (221°C)
Voltage	Dual Voltage (120V/240V)
Cord Length	8-foot Swivel Cord
Product Dimensions	16 x 1.25 x 1.25 inches
Item Weight	1.8 Pounds
Manufacturer	BaBylissPRO

9. WARRANTY AND SUPPORT

This BaBylissPRO Nano Titanium Professional Curling Iron comes with a **2-Year Limited Warranty** from the date of purchase. This warranty covers manufacturing defects under normal use.

For warranty claims, technical support, or further assistance, please contact BaBylissPRO customer service. Contact information can typically be found on the official BaBylissPRO website or on the product packaging.

