

## JONES CLOCKS JDRAG277LW

# JONES CLOCKS Bee Wall Clock (Model JDRAG277LW)

## Instruction Manual

### 1. INTRODUCTION

This manual provides essential information for the setup, operation, and maintenance of your JONES CLOCKS Bee Wall Clock, Model JDRAG277LW. This 10-inch wall clock features a classic yet contemporary design with a stylish honeybee illustration on a pale cream dial, housed in a modern case with metal hands.



Image 1.1: Front view of the JONES CLOCKS Bee Wall Clock.

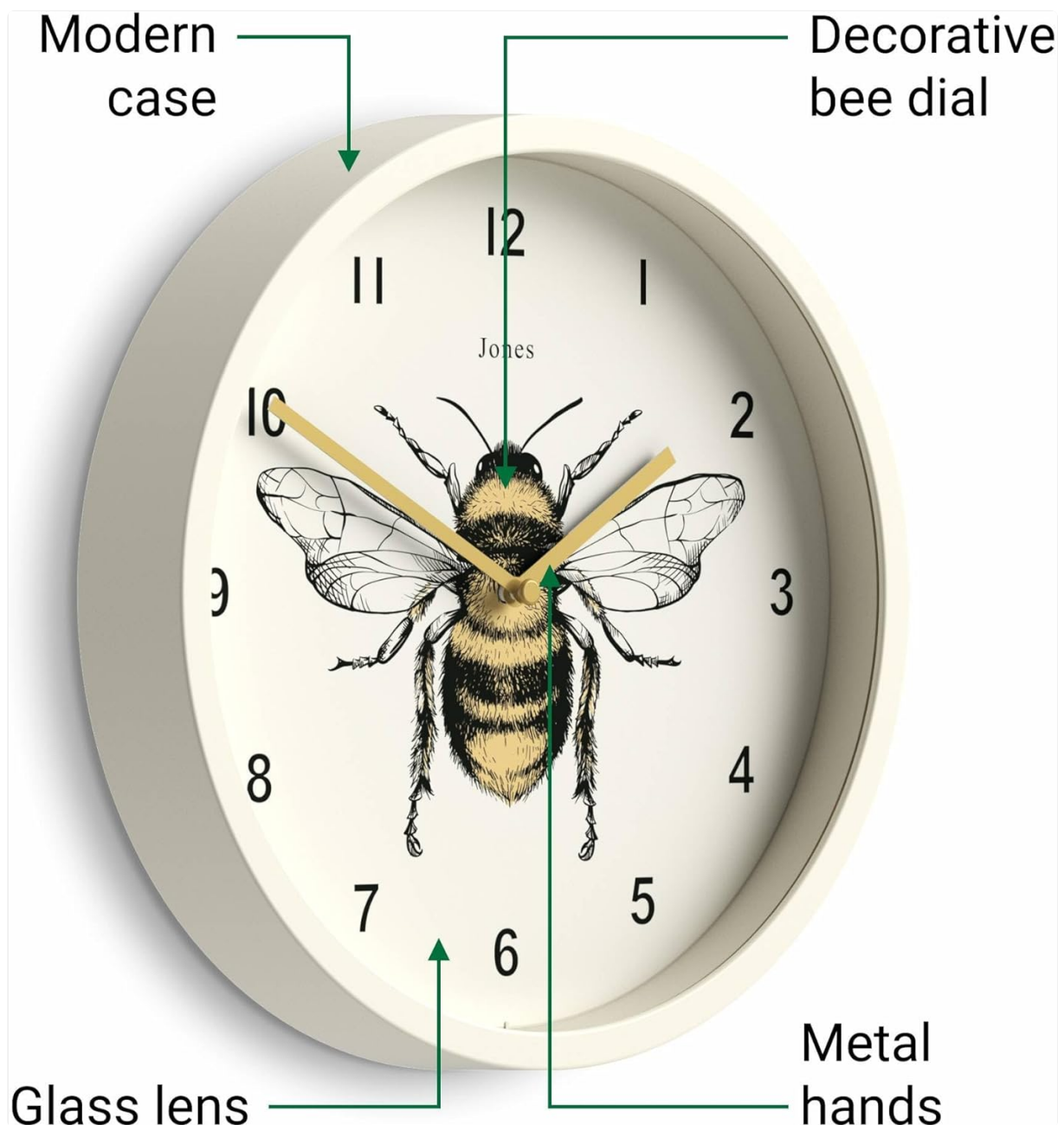


Image 1.2: Key features of the Bee Wall Clock, including the modern case, decorative bee dial, glass lens, and metal hands.

## 2. PACKAGE CONTENTS

Please verify that all items are present in your package:

- 1 x JONES CLOCKS Bee Wall Clock (Model JDRAG277LW)
- Instruction Manual (this document)

*Note: 1 x AA battery is required for operation and is not included in the package.*

## 3. SETUP

### 3.1. Battery Installation

1. Locate the battery compartment on the back of the clock.
2. Insert one (1) new, high-quality alkaline AA battery, ensuring correct polarity (+/-).
3. Close the battery compartment cover securely.

**WARNING:** Do not slide the battery underneath the spring terminals, as this can cause a short circuit. Do not use rechargeable or lithium batteries.



Image 3.1: Rear view of the clock, highlighting the battery compartment and wall mounting slot.

### 3.2. Setting the Time

1. Locate the adjustment wheel on the back of the clock mechanism.
2. Gently turn the adjustment wheel to move the clock hands to the correct time.

### 3.3. Wall Mounting

1. Select a suitable location indoors, away from direct sunlight, high humidity, or intense heat sources.
2. Ensure an adequate wall fixing (e.g., screw, nail, or wall anchor) is used, considering the type of wall material and the weight of the clock (approximately 530 grams / 1.17 pounds).
3. Hang the clock securely using the keyhole slot on the back.





Image 3.2: Example of the clock mounted on a wall.

## 4. OPERATING THE CLOCK

Your JONES CLOCKS Bee Wall Clock uses an accurate and reliable quartz step movement. Once the battery is installed and the time is set, the clock will begin keeping time. The movement produces a faint ticking sound.

## 5. MAINTENANCE

### 5.1. Cleaning

For cleaning, we recommend a light dusting with a soft, clean, and dry cloth only. The use of liquids and cleaning agents may damage the finish of your clock.

### 5.2. Battery Replacement

When the clock begins to lose time or stops, it is an indication that the battery needs to be replaced. Follow the battery installation steps (Section 3.1) to replace the AA battery with a new, high-quality alkaline battery.

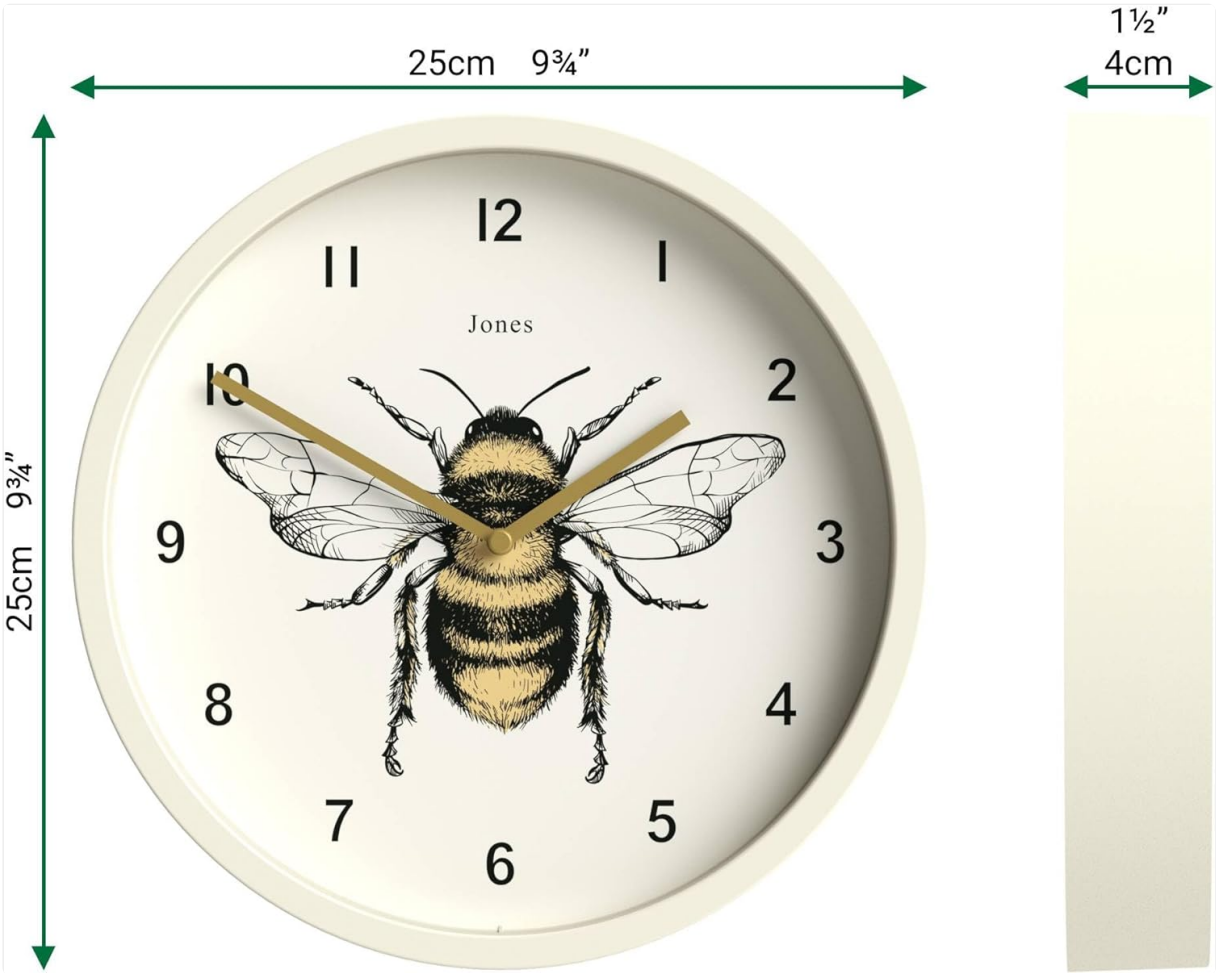
## 6. TROUBLESHOOTING

- **Clock not working or losing time:** Ensure a new, high-quality alkaline AA battery is correctly installed with proper polarity. Old or poor-quality batteries are a common cause of malfunction.
- **Hands are loose or clock stops:** Verify the clock is not exposed to high humidity, intense heat, or direct sunlight, as these conditions can cause damage.

If issues persist after following these steps, please refer to the Warranty and Support section.

7. SPECIFICATIONS

Feature	Detail
Model Number	JDRAG277LW
Dimensions (Diameter x Depth)	25 cm x 4 cm (10 inches x 1.5 inches)
Weight	Approximately 530 grams (1.17 pounds)
Power Source	1 x AA Alkaline Battery (not included)
Movement Type	Quartz Step Movement
Display Type	Analog
Materials	Acrylic, Metal, Plastic
Indoor/Outdoor Usage	Indoor only



## 8. SAFETY PRECAUTIONS

- This clock is designed for domestic and light commercial indoor use only. It is not suitable for outdoor environments.
- Avoid placing the clock in environments with high humidity, intense heat, or direct exposure to sunlight (e.g., conservatories, summer rooms, greenhouses, window sills, or near heat sources like cookers, radiators, fires, or wood burners). Such conditions can cause melting, corrosion, warping, discoloration, or malfunction of the clock and its components.
- Damage resulting from exposure to these environments/conditions is not covered under warranty, and no exchanges or repairs will be provided.

## 9. WARRANTY AND SUPPORT

### 9.1. Manufacturer's Guarantee

Your new JONES CLOCKS Bee Wall Clock comes with a 12-month guarantee from the date of purchase. This guarantee covers mechanical and material failures. It does not cover damage caused by tampering, battery leakage, or improper use as outlined in the safety precautions.

In the unlikely event that your clock develops a fault covered by the guarantee, please return it to the retailer from whom you purchased it.

### 9.2. Contact Information

JONES CLOCKS is a division of Newgate World Ltd.

**Newgate World Ltd.**


3 Glovers Meadow, Oswestry,  
SY10 8NH, UK




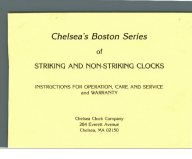

**EU Authorized Representative:**

Comply Express Lda.  
StartUp Madeira - EV 141 - Campus da Penteada,  
9020 105 Funchal

Website: [newgateworld.com](https://newgateworld.com)

## Related Documents - JDRAG277LW

	<p><a href="#">Jones Clocks Infinity: Features and Instructions</a></p> <p>User guide for the Jones Clocks Infinity digital alarm clock, covering features, setup, time setting, alarm setting, night mode, backlight, maintenance, and guarantee information.</p>
---	--

<p>Instructions for Large Gear Wall Clock</p> <p>Instructions N.1: How to insert batteries and set time correctly</p>  <p>Instructions N.2: How to disassemble and reassemble the clock parts</p> <ul style="list-style-type: none"><li>→ if a case the hands are loose, disengage all, or hands do not run or replace the clock hands</li></ul> <p>Follow steps L2A.1A</p> <ul style="list-style-type: none"><li>→ if a case the gears do not mesh, stop work, or have sales assist</li></ul> <p>Follow steps L2A.5A.1A</p> <ul style="list-style-type: none"><li>→ if a case the hands stop work, or combination battery box is damaged</li></ul> <p>Follow steps L2A.5A.1A</p>	<p><a href="#">Instructions for Large Gear Wall Clock</a></p> <p>Detailed instructions for inserting batteries, setting time, and disassembling/reassembling a large gear wall clock. Includes troubleshooting tips for common issues.</p>
<p>Instructions for Large Gear Wall Clock</p> <p>Instructions N.1: How to insert batteries and set time correctly</p>  <p>Instructions N.2: How to disassemble and reassemble the clock parts</p> <ul style="list-style-type: none"><li>→ if a case the hands are loose, disengage all, or hands do not run or replace the clock hands</li></ul> <p>Follow steps L2A.1</p> <ul style="list-style-type: none"><li>→ if a case the gears do not mesh, stop work, or have sales assist</li></ul> <p>Follow steps L2A.5A.1</p> <ul style="list-style-type: none"><li>→ if a case the hands stop work, or combination battery box is damaged</li></ul> <p>Follow steps L2A.5A.1</p>	<p><a href="#">Instructions for Large Gear Wall Clock</a></p> <p>A guide on how to insert batteries, set the time, and disassemble/reassemble parts for a large gear wall clock.</p>
<p>CLASSIC BRITISH ELECTRIC ANALOGUE CAR CLOCKS</p>  <p>As fitted to "Classic" cars up to the late 1970s</p> <p>Author: Mike Wilson Email: <a href="mailto:mike@kienzle.co.uk">mike@kienzle.co.uk</a></p>	<p><a href="#">Kienzle Electric Analogue Car Clocks: Servicing and Repair Guide (Part 2)</a></p> <p>Comprehensive guide to servicing and repairing Kienzle electric analogue car clocks, including electrically wound, transistorised impulse, and quartz models. Features troubleshooting, disassembly, repair procedures, and technical diagrams.</p>
	<p><a href="#">Chelsea Boston Series Clocks and Barometers: Operation, Care, Service, and Warranty</a></p> <p>Comprehensive guide to operating, caring for, and servicing Chelsea's Boston Series striking and non-striking clocks, quartz clocks, tide clocks, and barometers. Includes warranty information and the ship's bell code.</p>
<p>CHELSEA CLOCK Quartz Battery Installation</p> 	<p><a href="#">Chelsea Clock Quartz Battery Installation Guide</a></p> <p>Step-by-step instructions for installing batteries in various Chelsea Clock quartz timepiece models, including Boardroom, Chartweight, Constitution, Duxbury, Embassy, Harwich, Mayfair, Patriot Clocks, Radio Room Clock, Square Alarm, Presidential, Chatham, Shipstrike, and Dartmouth.</p>