

Manuals+

[Q & A](#) | [Deep Search](#) | [Upload](#)

manuals.plus /

› [Momcozy](#) /

› [Momcozy Baby Carrier Instruction Manual](#)

Momcozy BC001

Momcozy Baby Carrier Instruction Manual

Model: BC001 | Brand: Momcozy

INTRODUCTION AND OVERVIEW

The Momcozy Baby Carrier is designed for hands-free convenience, offering comfort and support for both parent and child. It is suitable for infants and toddlers weighing between 7 and 44 lbs. This carrier features an ergonomic design to ensure healthy hip and spinal development for your baby, along with enhanced lumbar support for the wearer.

- **Hands-Free Comfort:** A 3-in-1 design ideal for everyday use, outings, or travel, providing lightweight and effortless wearability.
- **Tailored to Grow Together:** Features three adjustable sizing positions to accommodate your child's growth from 7-44 lbs, ensuring a safe and ergonomic natural "M" position for healthy hip and spinal development. Padded leg openings prevent obstructed blood circulation.
- **Ergonomic Waist EVA Support:** Built-in EVA waist support offers crucial lumbar support and minimizes strain on your back. Thickly padded shoulder and waist straps are adjustable for a personalized fit.
- **Thoughtful Back Saver:** Utilizes an X-shaped back design, unlike conventional H-shaped carriers, to distribute weight evenly for enhanced comfort.
- **Experience Every Joyous Journey:** Unites comfort, connection, and exploration in three comfortable positions, making it an excellent gift for new parents.

PRODUCT FEATURES



Detailed view of the Momcozy Baby Carrier highlighting its key features: padded shoulder straps for comfort, padded leg openings for baby's circulation, a supportive EVA waist panel for lumbar support, a foldable neck support pad for head stability, and an adjustable seat size to grow with your baby.



Illustration demonstrating the tri-point support system of the carrier, which includes support for the shoulders, lumbar region, and abdomen, designed to distribute the baby's weight and reduce pressure on the wearer.

The Momcozy Baby Carrier is crafted from 100% cotton, ensuring excellent support, high durability, and a natural, non-irritating feel for both parent and baby.



The carrier is made from 100% cotton, providing excellent support, high durability, and a natural, non-irritating experience for sensitive skin.

SETUP AND WEARING INSTRUCTIONS

Follow these steps to correctly put on your Momcozy Baby Carrier and ensure a secure and comfortable fit for both you and your baby.



A visual guide demonstrating the five simple steps to wear the Momcozy Baby Carrier by yourself, from securing the waist belt to positioning your baby safely.

1. **Step 1: Secure Waist Belt.** Fasten the waist belt around your natural waist, ensuring it is snug and comfortable.
2. **Step 2: Position Shoulder Straps.** Place the shoulder straps over your shoulders, ensuring they are not twisted.
3. **Step 3: Insert Baby.** Carefully place your baby into the carrier, ensuring their legs are in the ergonomic "M" position.
4. **Step 4: Adjust Straps.** Tighten all straps to ensure a snug and secure fit for your baby, making sure they are close enough to kiss.
5. **Step 5: Final Check.** Verify that your baby's airway is clear and that they are comfortably positioned with proper head and neck support.

OPERATING THE CARRIER (BABY POSITIONS)

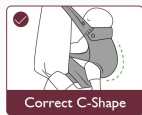
The Momcozy Baby Carrier supports various carrying positions to adapt to your baby's age and developmental stage, always prioritizing their comfort and safety.



Front-inward carrying position, suitable for newborns and younger infants, promoting bonding and support.

Spine-Healthy C Shape

Our baby carrier wraps around your baby in the recommended C shape, mirroring the womb, providing a sense of security. Additionally, it ensures optimal support and alignment for your baby's developing spine.



Correct C-Shape



Poor Posture

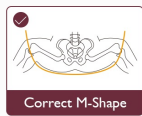


The carrier adapts to your baby's size as they grow, with adjustable settings for different weight ranges to ensure continuous comfort and proper hip development.

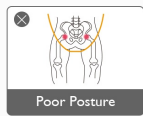
Ensuring Ergonomic Positioning:

Hip-Healthy M Shape

Our baby carrier helps baby's thighs spread around your torso in the M position, promoting natural hip development.



Correct M-Shape



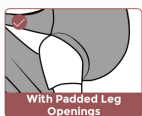
Poor Posture



The carrier promotes a spine-healthy C-shape, mirroring the natural curve of a baby's spine, providing security and optimal alignment.

Padded Leg Openings

The thick padding around leg openings prevents friction on baby's thighs, avoiding hindrance to blood circulation.



With Padded Leg Openings



With Unpadded Ones



The carrier supports a hip-healthy M-shape, allowing baby's thighs to spread around your torso, which promotes natural hip development.

MAINTENANCE

Proper care will extend the life of your Momcozy Baby Carrier and ensure it remains safe and comfortable for your baby.

- **Cleaning:** The Momcozy Baby Carrier is machine washable. Please refer to the care label on the product for specific washing instructions. Generally, use a gentle cycle with cold water and mild detergent.
- **Drying:** Air dry the carrier flat or hang it to dry. Avoid using a dryer as high heat can damage the fabric and components.
- **Storage:** Store the carrier in a clean, dry place away from direct sunlight when not in use.

TROUBLESHOOTING

If you encounter any issues with your Momcozy Baby Carrier, please review the following common solutions. If the problem persists, contact customer support.

Problem	Possible Cause	Solution
Discomfort for wearer	Improper strap adjustment; baby's weight not evenly distributed.	Adjust shoulder and waist straps for a snug fit. Ensure baby is centered and high enough on your body. Refer to the "Setup and Wearing Instructions" section.
Baby seems uncomfortable or fussy	Incorrect baby positioning (M-shape/C-shape); carrier size not adjusted for baby's current weight/height.	Check baby's leg and spine positioning to ensure proper ergonomic alignment. Adjust the seat size and neck support as needed. Ensure baby's airway is clear.
Carrier feels loose or insecure	Straps are not tightened sufficiently.	Re-tighten all adjustable straps, including the waist belt and shoulder straps, until the carrier feels secure and the baby is close to your body.

SPECIFICATIONS

Feature	Detail
Product Dimensions	14.17 x 5.91 x 5.31 inches
Item Model Number	BC001
Minimum Weight Recommendation	7 Pounds
Maximum Weight Recommendation	44 Pounds
Material Type	Cotton

Feature	Detail
Material Composition	100% Cotton
Care Instructions	Machine Wash
Style	Classic
Batteries Required	No
Orientation	Front
Item Weight	1.65 pounds
Color	Cotton-Black
Strap Type	Cross

WARRANTY AND SUPPORT

Momcozy is committed to providing high-quality products and excellent customer service. For specific warranty information regarding your baby carrier, please refer to the documentation included with your purchase or visit the official Momcozy website.

For any questions, concerns, or support needs, please contact Momcozy customer service through their official channels. You can also find more information and products by visiting the [Momcozy Store on Amazon](#).