

## COSTWAY 6-Tier Half-Moon Metal Plant Stand

# COSTWAY 6-Tier Half-Moon Metal Plant Stand Instruction Manual

Model: 6-Tier Half-Moon Metal Plant Stand

## INTRODUCTION

Thank you for choosing the COSTWAY 6-Tier Half-Moon Metal Plant Stand. This versatile and elegant plant stand is designed to beautifully display your potted plants, books, decorations, and other items, adding a touch of sophistication to any room or outdoor space. Its unique half-moon shape and multi-tiered design maximize display area while ensuring optimal sunlight exposure for your plants. Please read this manual carefully before assembly and use to ensure safe and correct operation.

## SAFETY INFORMATION

- **Anti-Tilt Mechanism:** For enhanced stability and safety, this plant stand is equipped with an anti-tilt mechanism. It is highly recommended to secure the stand to a wall using the provided hardware to prevent accidental tipping, especially in households with children or pets.
- **Load Capacity:** Each shelf can support up to 20 kg (44 lbs). The top hook can support up to 5 kg (11 lbs). Do not exceed these weight limits to avoid damage or injury.
- **Even Weight Distribution:** Distribute weight evenly across the shelves to maintain balance and stability.
- **Stable Placement:** Always place the plant stand on a flat, level, and stable surface.
- **Protective Foot Pads:** The stand includes anti-slip foot pads to protect your floor from scratches and prevent slipping. Ensure they are properly installed.
- **Assembly:** Assemble the product according to the instructions. Ensure all screws and fasteners are tightened securely before use.

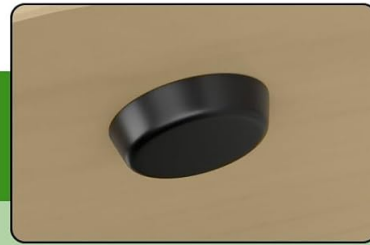


## Sicherheitskonzept



### Anti-Kipp-Mechanismus zur Verbesserung der Stabilität

Befestigen ein Gerät an der Wand und das andere Gerät auf dem Regal, dann verwenden einen Kabelbinder, um sie zu verbinden



### schützendes Bodenpolster

Verhindert ein Verrutschen und schützt Ihren Boden vor Kratzern

**Figure 1: Safety Features.** This image illustrates the anti-tilt mechanism, which should be securely fastened to a wall, and the protective foot pads designed to prevent floor scratches and enhance stability.

## PACKAGE CONTENTS

Please check that all components are present and undamaged before beginning assembly. If any parts are missing or damaged, please contact customer service.

- Main Frame Sections
- Shelves (6 tiers)
- Top Hanging Hook
- Hardware Pack (screws, bolts, anti-tilt kit, foot pads)
- Instruction Manual

## ASSEMBLY INSTRUCTIONS

Follow these steps carefully to assemble your plant stand. It is recommended to have two people for assembly.

1. **Unpack and Identify Parts:** Carefully remove all components from the packaging. Lay them out on a clean, soft surface to prevent scratches. Refer to the parts list to identify each piece.

2. **Assemble the Main Frame:** Connect the metal frame sections using the provided screws and tools. Ensure all connections are firm but do not overtighten initially.
3. **Attach Shelves:** Secure each wooden shelf to the designated positions on the metal frame. The ladder structure allows for optimal plant placement.
4. **Install Top Hook:** Attach the hanging hook to the top section of the frame.
5. **Install Anti-Tilt Mechanism:** Attach one part of the anti-tilt kit to the back of the plant stand and the other part to a sturdy wall. Use a cable tie or similar fastener to connect them, ensuring the stand is securely anchored.
6. **Attach Foot Pads:** Place the protective anti-slip foot pads on the bottom of the stand's base to prevent floor damage.
7. **Final Tightening:** Once all parts are assembled, carefully tighten all screws and fasteners to ensure the stand is stable and secure.



**Figure 2: Assembled Plant Stand.** This image shows the fully assembled plant stand, ready for use, displaying its half-moon design and multiple tiers.

## OPERATING INSTRUCTIONS

Your COSTWAY plant stand is designed for versatile use. Here are some guidelines for optimal operation:

- **Placement:** Position the stand in your desired location, such as a living room, balcony, bedroom, or office. Ensure it is on a stable, level surface.
- **Plant Arrangement:** Utilize the 6-tier ladder structure to arrange plants of varying heights, allowing each plant sufficient sunlight exposure.
- **Hanging Items:** Use the top hook to hang flower baskets, wind chimes, or other lightweight decorative ornaments.
- **Multi-functional Use:** Beyond plants, the shelves can be used to display books, photo frames, collectibles, trophies, or small decorative items.
- **Combining Stands:** For a full circular display, two half-moon stands can be placed together.

**Fotorahmen** 

**Topfpflanzen** 

**Bücher** 

**Dekorationen** 

**Pokale** 

**Spielzeug** 

## 6-lagiges Pflanzendisplay-Regal

- ✓ Bietet reichlich Lager- und Ausstellungsfläche für mehrere Töpfe
- ✓ Das Öffnungsdesign hilft den Pflanzen, genügend Sonnenlicht für ihr Wachstum zu bekommen



**oberer Haken**  
Kann zum Aufhängen von Körben verwendet werden

**Figure 3: Versatile Usage.** This image demonstrates how the plant stand can be used to display a variety of items, including potted plants, books, and decorative objects.



**Figure 4: Combined Display.** This image shows two half-moon plant stands arranged together to create a complete circular display, offering an expanded and symmetrical presentation.

## MAINTENANCE

Proper care will extend the life and appearance of your plant stand.

- **Cleaning:** The veneered particle board and MDF shelves have a smooth, waterproof surface. Wipe clean with a soft, damp cloth. Avoid abrasive cleaners or harsh chemicals.
- **Metal Frame:** The powder-coated steel frame is rust-resistant. Clean with a damp cloth and dry thoroughly.
- **Inspection:** Periodically check all screws and connections to ensure they remain tight. Retighten if necessary.
- **Avoid Overwatering:** Be mindful when watering plants to prevent excessive water from pooling on the shelves, which, despite being waterproof, can lead to long-term damage if left standing.

## TROUBLESHOOTING

If you encounter any issues with your plant stand, refer to the following common solutions:

- **Stand is Wobbly:**

- Ensure all screws are securely tightened.
  - Verify the stand is placed on a flat, even surface.
  - Check if the anti-tilt mechanism is properly installed and anchored to the wall.
- **Parts Don't Fit:**
    - Double-check the assembly steps and ensure you are using the correct parts for each step.
    - Do not force parts together. If a part does not fit, re-examine the instructions or contact customer support.
- **Scratched Floor:**
    - Ensure the protective foot pads are correctly installed on all contact points with the floor.
    - Avoid dragging the stand; lift it when moving.

## SPECIFICATIONS

<b>Brand</b>	COSTWAY
<b>Model</b>	6-Tier Half-Moon Metal Plant Stand
<b>Color</b>	White and Natural
<b>Material</b>	Engineered Wood, Alloy Steel
<b>Dimensions (L x W x H)</b>	60 x 30 x 155 cm (23.6 x 11.8 x 61 inches)
<b>Item Weight</b>	8.76 kg (19.3 lbs)
<b>Number of Tiers</b>	6
<b>Shelf Load Capacity</b>	20 kg (44 lbs) per shelf
<b>Hook Load Capacity</b>	5 kg (11 lbs)
<b>Assembly Required</b>	Yes



**Figure 5: Product Dimensions.** This diagram provides detailed measurements of the plant stand, including height, width, depth, and individual shelf dimensions.

## WARRANTY AND SUPPORT

COSTWAY products are designed for quality and durability. This product comes with a standard manufacturer's warranty. For specific warranty details, please refer to the documentation included with your purchase or visit the official COSTWAY website.

If you have any questions, require assistance with assembly, or need to report missing/damaged parts, please contact COSTWAY customer support. Have your product model and purchase information ready when contacting support.

**Contact Information:** Please refer to your purchase receipt or the COSTWAY official website for the most up-to-date customer service contact details.