

Manuals+

[Q & A](#) | [Deep Search](#) | [Upload](#)

manuals.plus /

> [Roziapro](#) /

> [Roziapro Hair Clippers Kit User Manual](#)

Roziapro B0CDPY29LG

Roziapro Hair Clippers Kit User Manual

Model: B0CDPY29LG | Brand: Roziapro

INTRODUCTION

This manual provides detailed instructions for the safe and effective use, setup, operation, and maintenance of your Roziapro Hair Clippers Kit. This professional grooming kit includes a cordless hair clipper, a T-blade hair trimmer, and a nose hair trimmer, designed for precise and efficient hair and beard grooming.

PACKAGE CONTENTS

Your Roziapro Hair Clippers Kit comes with the following items:

- 1 x Cordless Hair Clipper
- 1 x T-Blade Hair Trimmer
- 1 x Electric Nose Hair Trimmer
- 1 x Shave Knife Replacement Head
- 11 x Limit Combs (various sizes: 1.5mm, 3mm, 4.5mm, 6mm, 10mm, 13mm, 16mm, 19mm, plus 1mm, 3mm, 6mm for T-blade)
- 3 x USB Charging Cables
- 1 x Cleaning Brush
- 1 x Barber Cape
- 2 x Hair Scissors (one regular, one thinning)
- 1 x Comb
- 1 x Storage Box (carrying case)



Figure 1: All components included in the Roziapro Hair Clippers Kit.

SETUP

1. Charging the Devices

Before first use, fully charge all devices. The hair clipper, detail trimmer, and nose trimmer each have built-in high-capacity lithium batteries and can be charged via USB. The LED display on each device will indicate the remaining charge level and charging status.

- **Hair Clipper:** Approximately 3 hours for a full charge, providing up to 180 minutes of runtime.
- **Detail Trimmer:** Approximately 1.5 hours for a full charge, providing up to 60 minutes of runtime.
- **Nose & Ear Trimmer:** Approximately 1.5 hours for a full charge, providing up to 120 minutes of runtime.



Figure 2: Charging indicators and estimated charging times for each device.

2. Attaching Guide Combs and Heads

Select the appropriate guide comb for your desired hair length. The main hair clipper features an adjustable tapered rod for fine-tuning lengths. The T-blade trimmer and nose trimmer also support various attachments.

- **Hair Clipper:** Attach the desired limit comb by sliding it onto the blade until it clicks securely into place. Use the adjustable lever on the side for micro-adjustments to cutting length.
- **T-Blade Trimmer:** Attach the smaller guide combs (1mm, 3mm, 6mm) as needed for beard or detail trimming.
- **Nose Hair Trimmer:** This device comes with a nose/ear trimming head and a shave knife replacement head. To change heads, gently twist and pull off the current head, then align and push on the desired head until it locks.

Upgrade 2 In 1 Beard/Nose Hair Trimmer



Figure 3: Interchangeable heads for the nose/beard trimmer and adjustable blade on the main clipper.

OPERATING INSTRUCTIONS

1. General Operation

Press the power button to turn on each device. The LED display will show the battery percentage and RPM (for clippers). Most devices offer multiple speed settings for different hair types and cutting needs.



Figure 4: Examples of using the hair clipper, T-blade trimmer, nose trimmer, and shaver.

2. Hair Clipper Use

For general hair cutting, attach the appropriate guide comb. Move the clipper against the direction of hair growth for an even cut. Use the adjustable lever to fine-tune the cutting length without changing combs. The powerful rotary motor ensures efficient cutting without snagging or pulling.

Fast Charging & LED Intelligent Display



Figure 5: Internal view highlighting the quiet and strong rotary motor for high performance.

3. T-Blade Trimmer Use

The T-blade trimmer is ideal for precise lines, edging, and beard trimming. Use it without a comb for a close, zero-gapped trim, or with the smaller guide combs for desired beard length. Its sharp blades provide high-performance precise trimming.

4. Nose Hair Trimmer Use

Use the nose hair trimmer gently to remove unwanted nose and ear hair. The rotating blades are designed for safe and accurate trimming. For shaving, attach the shave knife replacement head and use it on desired areas for a smooth finish.

MAINTENANCE

1. Cleaning

The Roziapro Hair Clippers Kit is designed with IPX7 waterproofing, allowing the entire body of the devices to be washed

under running water for easy cleaning. Always ensure the device is turned off before cleaning.

- After each use, remove any attached guide combs.
- Use the provided cleaning brush to remove loose hairs from the blades and housing.
- Rinse the blades and the device body under running water.
- Allow all parts to air dry completely before reassembling or storing.

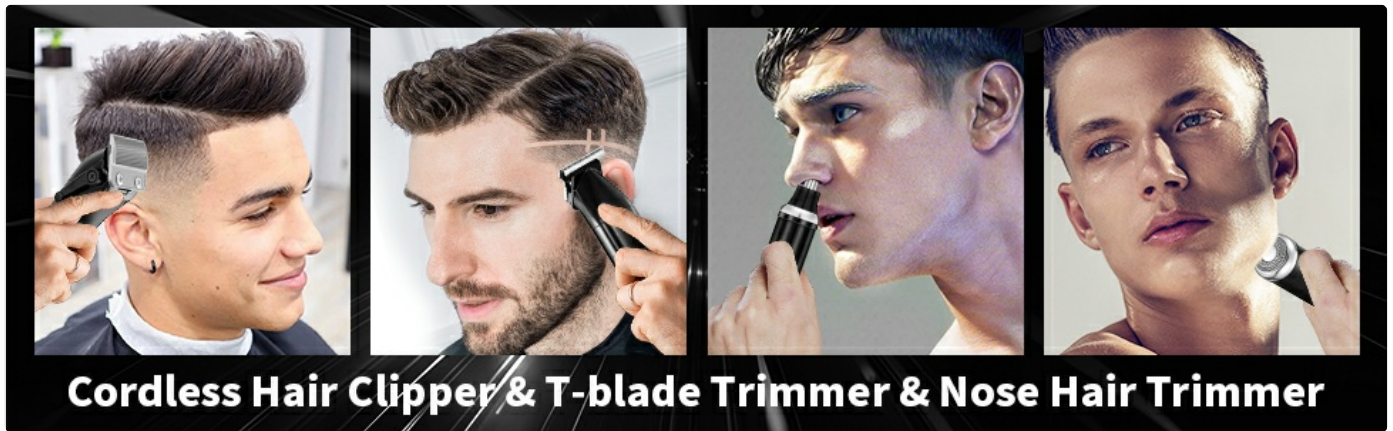


Figure 6: The devices are fully waterproof for easy cleaning.

2. Blade Care

The blades are made of sharp high carbon steel and are designed to be self-sharpening. Regular cleaning helps maintain their performance. While the product description mentions self-sharpening, occasional oiling (not included) can further prolong blade life and ensure smooth operation, especially for the main clipper and T-blade trimmer.

TROUBLESHOOTING

- **Device Not Turning On:** Ensure the device is fully charged. Check the LED display for battery level. If the battery is depleted, connect it to a USB power source and allow it to charge.
- **Reduced Cutting Performance / Pulling Hair:**
 - Clean the blades thoroughly to remove any trapped hair or debris.
 - Ensure the blades are properly aligned.
 - The battery might be low; recharge the device.
 - Consider applying a small amount of clipper oil (not included) to the blades for smoother operation.
- **Unusual Noise or Vibration:** Turn off the device immediately. Check for any foreign objects lodged in the blades or motor area. Ensure all attachments are securely fastened. If the issue persists after cleaning and reassembly, contact customer support.
- **LED Display Not Working:** If the device functions but the display is blank, try fully charging the device. If the issue persists, it may indicate a minor electrical fault that does not affect core functionality, but customer support can be contacted for further assistance.

SPECIFICATIONS

Feature	Detail
Brand	Roziapro

Feature	Detail
Model Number	B0CDPY29LG
Power Source	Battery Powered (Lithium Ion)
Hair Clipper Runtime	Up to 180 minutes
Hair Clipper Charging Time	3 hours
Detail Trimmer Runtime	Up to 60 minutes
Detail Trimmer Charging Time	1.5 hours
Nose & Ear Trimmer Runtime	Up to 120 minutes
Nose & Ear Trimmer Charging Time	1.5 hours
Blade Material	High Carbon Steel
Waterproof Rating	IPX7 (Full Body Washable)
Package Dimensions	12.24 x 9.96 x 3.58 inches
Weight	2.54 Pounds

SAFETY INFORMATION

Please read and adhere to the following safety guidelines:

- Always use the kit with caution, especially near the face and eyes.
- Avoid ingestion or inhalation of small parts.
- Clean and store the kit properly after each use.
- Keep out of reach of children.
- Always supervise children when they are near or using the kit.
- Statements regarding dietary supplements have not been evaluated by the FDA and are not intended to diagnose, treat, cure, or prevent any disease or health condition. (Note: This disclaimer seems generic and might not apply directly to a hair clipper kit, but it was present in the source data under "Legal Disclaimer".)

WARRANTY AND SUPPORT

Roziapro offers excellent customer service. If you have any questions or encounter issues with your product, please do not hesitate to contact us. Our professional customer service staff is available online to provide timely solutions and ensure your satisfaction.

For support, please refer to the contact information provided with your purchase or visit the official Roziapro store on Amazon.

