

Retrolife R610

Retrolife R610 3-Speed Bluetooth Portable Suitcase Vinyl Player Instruction Manual

Your guide to setting up, operating, and maintaining your Retrolife R610 record player.

INTRODUCTION

Thank you for choosing the Retrolife R610 3-Speed Bluetooth Portable Suitcase Vinyl Player. This manual provides essential information for the safe and efficient use of your new record player. Please read it thoroughly before operation and retain it for future reference.



Image: The Retrolife R610 record player in blue, open and ready to play a vinyl record.

SETUP

1. Unpacking and Placement

- Carefully remove the unit from its packaging. Ensure all components, including the power cord, are present.
- Place the record player on a stable, level surface away from direct sunlight, heat sources, and excessive dust or vibration.
- Remove the protective cap from the stylus (needle) before use.
- Unlock the tone arm from its rest.

2. Power Connection

- Connect the power adapter to the DC IN port on the back of the unit.
- Plug the power adapter into a standard wall outlet.

OPERATING INSTRUCTIONS

1. Playing Vinyl Records

1. Open the lid of the record player.
2. Place a vinyl record on the turntable platter.
3. Select the appropriate speed (33 1/3, 45, or 78 RPM) using the speed selector switch located on the control panel. For 45 RPM records, place the included 45 RPM adapter on the center spindle.
4. Lift the tone arm using the cueing lever.
5. Carefully move the tone arm over the desired track of the record.
6. Gently lower the tone arm onto the record using the cueing lever. The record will begin to play.
7. Adjust the volume using the volume control knob.
8. To stop playback, lift the tone arm using the cueing lever and return it to its rest.
9. The auto-stop function can be enabled or disabled using the AUTO-STOP switch. When enabled, the turntable will automatically stop spinning when the record finishes.

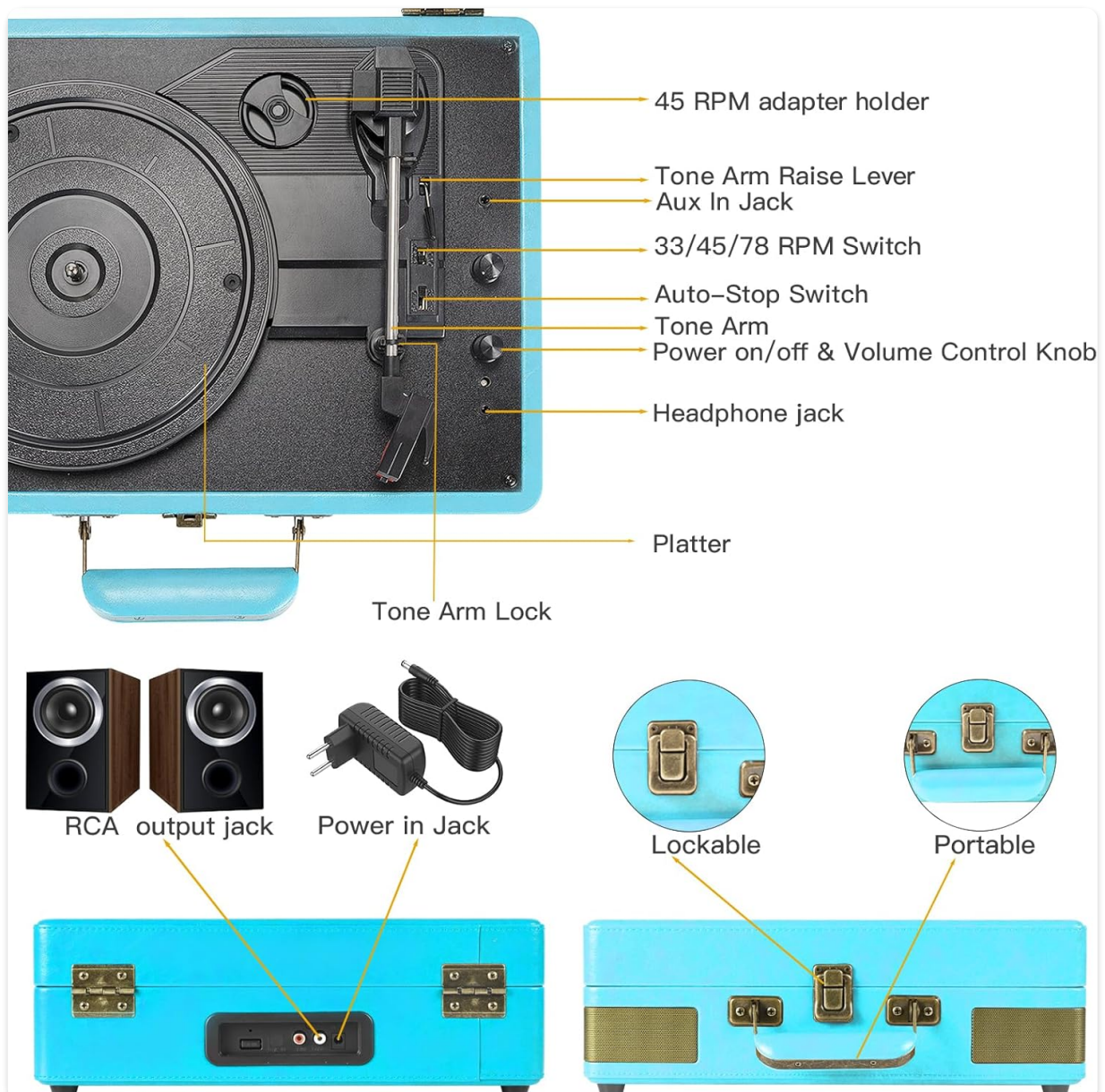


Image: Detailed view of the record player's controls, including the tone arm, speed selector, and volume.

Video: Demonstration of playing a vinyl record on the Retrolife R610, highlighting the 3-speed functionality.

2. Bluetooth Operation

The Retrolife R610 can connect wirelessly to your Bluetooth-enabled devices to play audio through its built-in speakers.

1. Turn on the record player.
2. Set the input selector to 'BT' (Bluetooth). The indicator light will flash, indicating it's in pairing mode.
3. Enable Bluetooth on your external device (e.g., smartphone, tablet) and search for 'Retrolife R610'.
4. Select 'Retrolife R610' to pair. Once connected, the indicator light will stop flashing.
5. You can now play audio from your device through the record player's speakers.



BLUETOOTH WIRELESS

Enjoy music from your phone
and other devices



Image: The record player demonstrating its Bluetooth wireless capability.

3. External Connections

- **RCA Output:** Connect external powered speakers or an amplifier via the RCA output jacks on the back of the unit for enhanced audio.
- **Aux-In:** Use the 3.5mm Aux-In port to connect other audio devices like MP3 players or smartphones using an auxiliary cable.
- **Headphone Jack:** For private listening, plug your headphones into the headphone jack on the control panel.



Image: Rear view of the record player showing RCA output and power input connections.

Video: A detailed review demonstrating the features and operation of the Retrolife R610 record player.

MAINTENANCE

1. Cleaning the Stylus

- Use a soft brush, specifically designed for stylus cleaning, to gently brush the stylus from back to front.
- Avoid touching the stylus with your fingers, as oils can degrade its performance.

2. Cleaning the Unit

- Wipe the exterior of the unit with a soft, dry cloth.
- Do not use harsh chemicals or abrasive cleaners.
- Keep the lid closed when not in use to prevent dust accumulation on the platter and tone arm.



Image: The Retrolife R610 in its closed suitcase form, emphasizing its portability and ease of storage.

TROUBLESHOOTING

Problem	Solution
No power	Ensure the power adapter is securely connected to both the unit and a working wall outlet. Check the power switch.
No sound	Check the volume level. Ensure the correct input mode (Phono/BT/Line In) is selected. If using external speakers, verify their connection and power.
Skipping or distorted sound	Clean the record and stylus. Ensure the record player is on a stable, level surface. Check if the stylus is damaged or worn.
Bluetooth not connecting	Ensure the unit is in Bluetooth pairing mode (flashing indicator). Turn off and on Bluetooth on your device, then try pairing again.

Video: An honest review of the Retrolife Record Player, which may offer insights into common user experiences and

SPECIFICATIONS

Feature	Detail
Brand	Retrolife
Model Name	R610 (Retro Bluetooth Turntable)
Product Dimensions	13.82 x 7.87 x 4.84 inches
Item Weight	6.45 pounds (2.93 Kilograms)
Maximum Rotational Speed	78 RPM (Supports 33 1/3, 45, 78 RPM)
Material	PU Leather
Special Feature	Built-In Bluetooth Receiver, Auto-Stop Function
Included Components	Power cord
Compatible Devices	Headphone, Smartphone, External Speaker
Color	Blue

WARRANTY AND SUPPORT

Retrolife is committed to providing quality products and customer satisfaction. For any questions regarding your Retrolife R610 record player, please contact our customer service team. We offer 24-hour one-on-one service to assist you with any inquiries or issues.

Please refer to your purchase documentation for specific warranty details and contact information.