

KIIROO 5403170000

KIIROO PowerBlow Automatic Male Masturbator User Manual

Model: 5403170000

Brand: KIIROO

1. INTRODUCTION

The KIIROO PowerBlow is an automatic male masturbator designed to provide an interactive and customizable experience. This device is compatible with various Feel Stroker sleeves, including the Feel Victoria Mouth Sleeve, and can connect to interactive content online via the FeelConnect app.

Key features include:

- **Automatic Suction:** Provides lifelike sensations.
- **Interactive Connectivity:** Connects with 2D/VR content, webcam performers, and partner devices via the FeelConnect app.
- **Adjustable Intensity:** Customize suction power and patterns through the app.
- **Modular Design:** Compatible with KIIROO Feel Stroker sleeves and the KIIROO KEON for enhanced experiences.

2. WHAT'S IN THE BOX

Your KIIROO PowerBlow package includes the following components:

- FeelVictoria Mouth Stroker by Kiiroo
- PowerBlow by Kiiroo
- Silicone Ring
- Stroker Cup
- Replacement Absorbent Foam Ring
- USB-C Charging Cable
- Quick Start Guide
- Voucher Leaflet

What's in the box

- ✓ FeelVictoria Mouth Stroker by Kiiroo
- ✓ PowerBlow by Kiiroo
- ✓ Silicone Ring
- ✓ Stroker Cup
- ✓ Replacement Absorbent Foam Ring
- ✓ USB-C Charging Cable
- ✓ Quick Start Guide
- ✓ Voucher Leaflet



Image: All components included in the KIIROO PowerBlow package.

3. SETUP

3.1. Assembly

1. Ensure all components are clean and dry before assembly.
2. Insert the Feel Victoria Mouth Sleeve into the Stroker Cup.
3. Attach the PowerBlow unit to the assembled Stroker Cup by screwing it on securely. Ensure a tight fit to prevent air leaks, which can affect suction performance.



Image: An exploded view demonstrating how the PowerBlow unit connects to the Feel Stroker sleeve and casing.

3.2. Charging

Before first use, fully charge the PowerBlow unit using the provided USB-C charging cable. Connect the cable to the charging port on the device and a compatible USB power source. The indicator light will show charging status.

3.3. FeelConnect App Installation and Connection

The FeelConnect app is essential for unlocking the full interactive capabilities of your PowerBlow device. Follow these steps to connect:

1. **Download the App:** Download the FeelConnect app from your smartphone's app store (iOS or Android).
2. **Power On Device:** Turn on your PowerBlow device by pressing and holding the power button until the indicator light illuminates.
3. **Enable Bluetooth:** Ensure Bluetooth is enabled on your smartphone.
4. **Create/Login Account:** Open the FeelConnect app and either create a new account or log in to an existing one.
5. **Connect Device:** Within the app, navigate to the device connection section. Your PowerBlow should

appear in the list of available devices. Select it and follow any on-screen prompts to complete the pairing process.



Image: The KIIRRO PowerBlow device highlighting its Bluetooth connectivity and app control features.

For a visual guide on connecting your device to the FeelConnect app, please watch the video below:

Your browser does not support the video tag.

Video: A step-by-step guide on how to connect your KIIRRO device to the FeelConnect app for interactive use.

4. OPERATING INSTRUCTIONS

4.1. Basic Use

Once assembled and connected to the FeelConnect app, you can begin using your PowerBlow. The device operates by creating suction around the Feel Stroker sleeve, simulating oral sensations.

4.2. Intensity Control

The FeelConnect app allows for precise control over the PowerBlow's suction intensity and patterns. You can adjust parameters such as suction power, suction time, vacuum hold, and pause time to customize your experience. Experiment with different settings to find your preferred sensations.

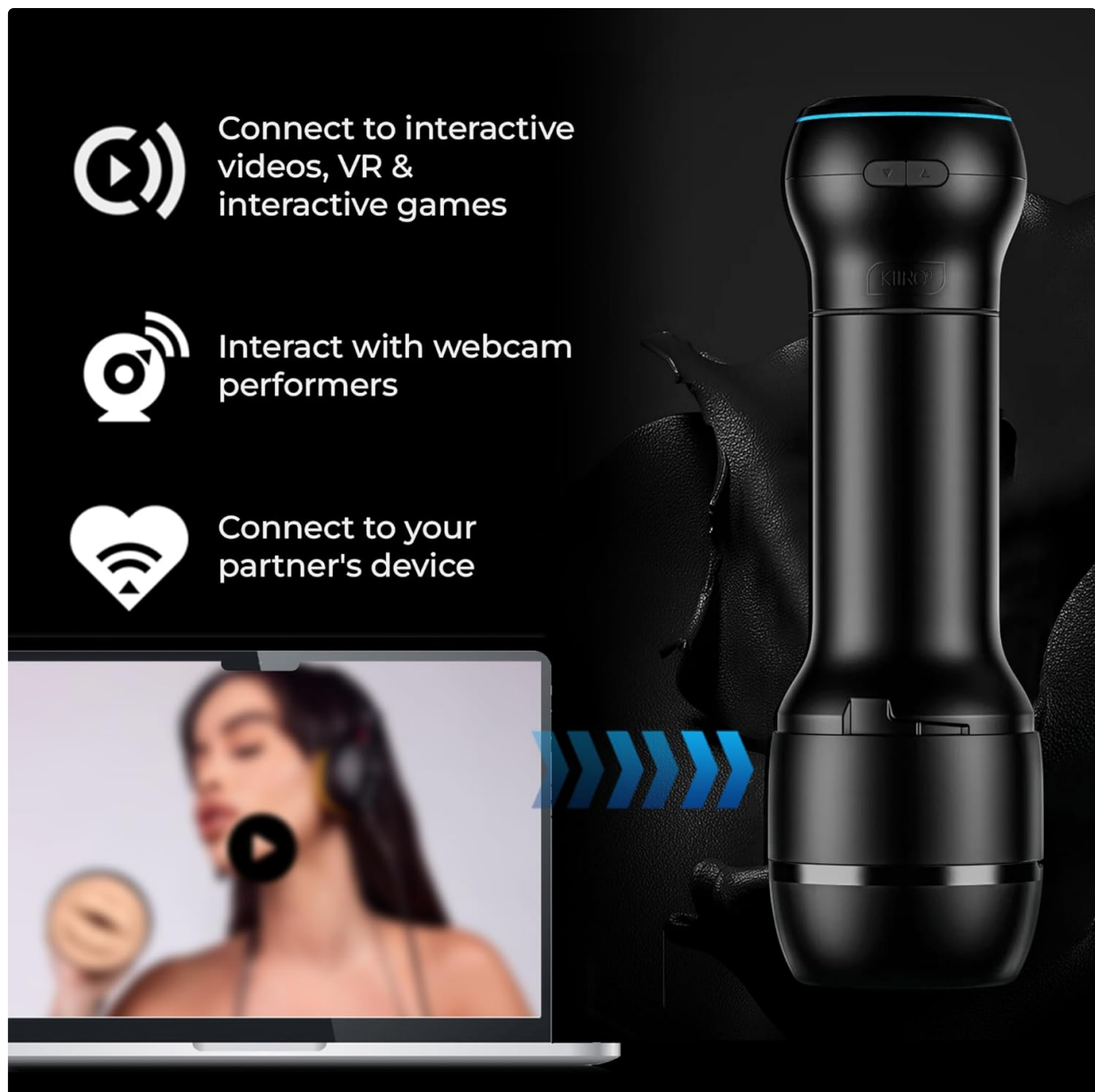


Image: The FeelConnect app interface displaying various sliders and options for customizing the suction power and patterns of the PowerBlow device.

4.3. Interactive Content

The PowerBlow is designed for immersive interactive experiences. You can connect it to:

- **Interactive Videos & VR:** Sync your device with compatible 2D or VR content for synchronized sensations.
- **Webcam Performers:** Interact with live performers who can control your device remotely.
- **Partner Devices:** Connect with a partner's device for long-distance shared experiences.

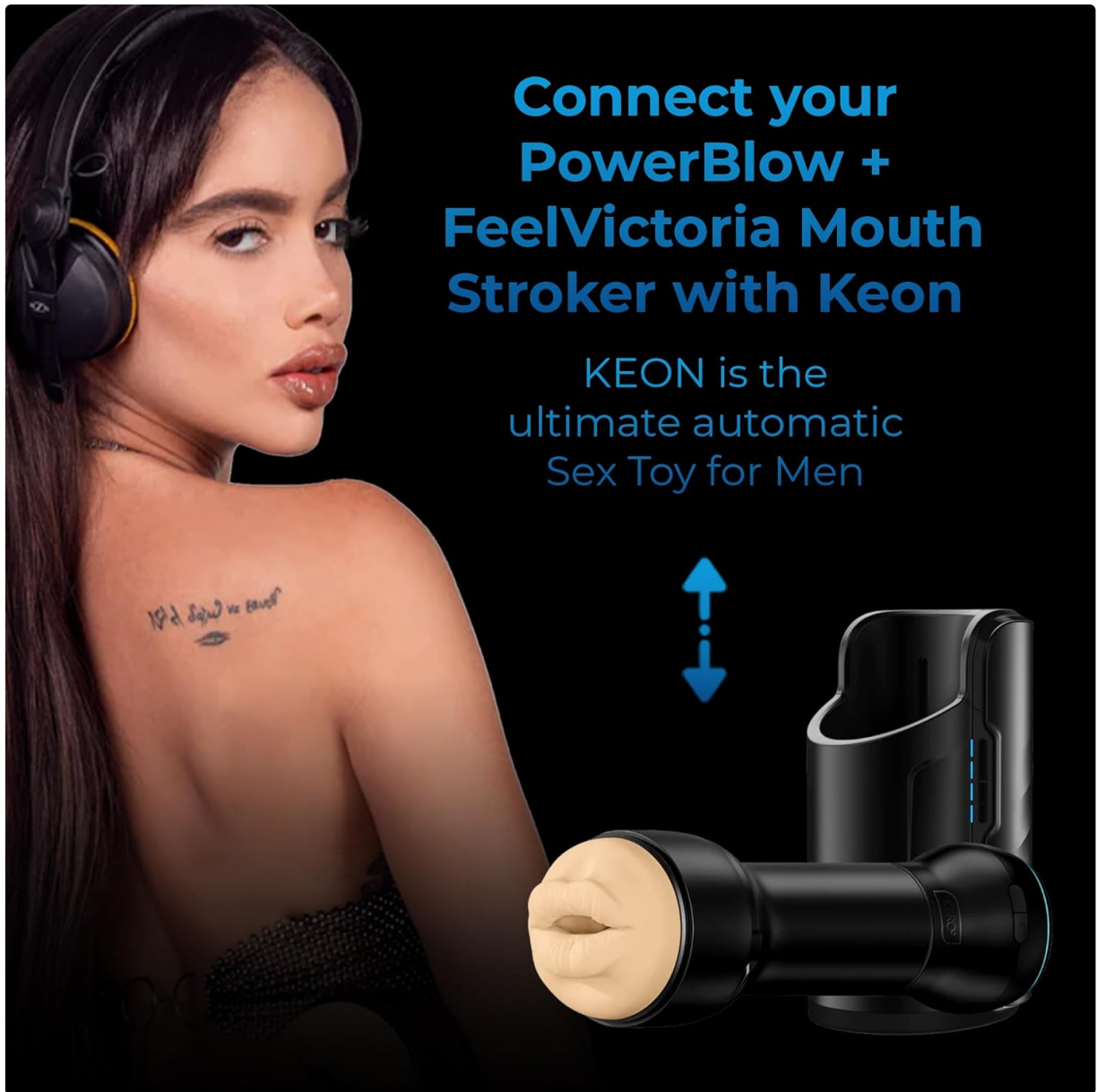
To connect to interactive content on a desktop or mobile device, use the FeelConnect app's 'Website' option. This typically involves scanning a QR code displayed on the interactive content platform to establish a connection.



Image: The KIIRROO PowerBlow device shown alongside a laptop, illustrating its connectivity with interactive videos, VR, and webcam performers.

4.4. KEON Compatibility

For an even more intense and automatic experience, the PowerBlow can be combined with the KIIRROO KEON (sold separately). The KEON provides automatic stroking motion, which, when paired with the PowerBlow's suction, amplifies the sensations.



Connect your PowerBlow + FeelVictoria Mouth Stroker with Keon

KEON is the
ultimate automatic
Sex Toy for Men

Image: The KIIROO PowerBlow and Feel Victoria Mouth Stroker shown connected to the KIIROO KEON, demonstrating how they combine for an automatic experience.

Watch this video to see the PowerBlow in action:

Your browser does not support the video tag.

Video: A demonstration of the KIIROO PowerBlow attachment, showcasing its suction capabilities and how it integrates with a Feel Stroker sleeve.

5. MAINTENANCE

5.1. Cleaning

Proper cleaning is crucial for hygiene and longevity of your device:

- **Disassemble:** Carefully detach the Feel Stroker sleeve from the PowerBlow unit.
- **Clean Sleeve:** Remove the silicone sleeve from the Stroker Cup. Wash the silicone sleeve thoroughly with warm water and a mild, toy-safe soap. Rinse completely and allow to air dry.
- **Clean PowerBlow Unit:** Wipe the exterior of the PowerBlow unit with a damp cloth. **Do not submerge the PowerBlow unit in water.** Be careful to prevent fluids from entering the vacuum section, as the unit is not designed to be fully waterproof in this area.

- **Dry Thoroughly:** Ensure all parts are completely dry before reassembling or storing.

5.2. Storage

Store your PowerBlow and Feel Stroker sleeve in a clean, dry place away from direct sunlight and extreme temperatures. Keep it separate from other toys to prevent material degradation or damage.

6. TROUBLESHOOTING

If you encounter any issues with your KIIROO PowerBlow, please refer to the following common troubleshooting tips:

- **Device Not Turning On:** Ensure the device is fully charged. Connect it to the USB-C charger and wait for the charging indicator to confirm power.
- **Bluetooth Disconnection:** If the device frequently disconnects from the FeelConnect app, try repairing the device. Ensure your phone's Bluetooth is active and there are no obstructions between your phone and the PowerBlow.
- **Weak or No Suction:** Check that the Feel Stroker sleeve is correctly and securely attached to the PowerBlow unit. Ensure there are no gaps or leaks in the assembly. Verify that the silicone ring is properly seated.
- **Unresponsive Buttons:** If buttons are not responding, ensure the device is charged. A soft reset (powering off and on) may resolve minor software glitches.
- **Loud Noise/Squealing:** Some operational noise is normal, especially at higher suction settings. If the device produces excessive squealing, ensure the sleeve is properly lubricated and correctly inserted, as friction can cause noise.
- **Liquid Leaking:** If liquid leaks from the bottom, ensure the sleeve is properly seated and that the absorbent foam ring is in place. Avoid getting fluids into the vacuum section of the PowerBlow unit.

If these steps do not resolve the issue, please contact KIIROO customer support for further assistance.

7. SPECIFICATIONS

Feature	Detail
Product Dimensions	3.94 x 1.97 x 0.5 inches; 1.19 Pounds
Item Model Number	54031700000
Batteries	1 Lithium Ion battery required
Water Resistance Level	Waterproof (for the sleeve, not the main unit's vacuum section)
Connectivity	Bluetooth

8. WARRANTY AND SUPPORT

KIIROO products are manufactured to high-quality standards. For specific warranty information regarding your PowerBlow device, please refer to the warranty card included in your product packaging or visit the official KIIROO website. Keep your proof of purchase for warranty claims.

For technical support, troubleshooting assistance, or any other inquiries, please contact KIIROO customer service. Contact details can typically be found on the KIIROO website or in the Quick Start Guide provided.

with your product.