

[Manuals.plus](#) /

> [BaBylissPRO](#) /

> BaBylissPRO Nano Titanium Prima Ionic Hair Straightener User Manual

BaBylissPRO BNTRB3100TUC

BaBylissPRO Nano Titanium Prima Ionic Hair Straightener

Model: BNTRB3100TUC | Brand: BaBylissPRO

INTRODUCTION

This manual provides comprehensive instructions for the safe and effective use of your BaBylissPRO Nano Titanium Prima Ionic Hair Straightener. This professional styling tool is designed for both straightening and curling hair, utilizing IonMultiplier Technology and Nano Titanium plates for efficient heat transfer, smoothing, conditioning, and shine.



Image: The BaBylissPRO Nano Titanium Prima Ionic Hair Straightener in its iridescent finish, shown in a closed position.

IMPORTANT SAFETY INSTRUCTIONS

When using electrical appliances, especially when children are present, basic safety precautions should always be followed, including the following:

- **DANGER:** Keep away from water. As with most electrical appliances, electrical parts are electrically live even when the switch is off.
- Always unplug the appliance immediately after using.
- Do not use while bathing or in a shower.
- Do not place or store appliance where it can fall or be pulled into a tub or sink.
- Do not place in or drop into water or other liquid.
- If an appliance falls into water, unplug it immediately. Do not reach into the water.
- **WARNING:** To reduce the risk of burns, electrocution, fire, or injury to persons:

- This appliance should never be left unattended when plugged in.
- Do not pull, twist, or wrap line cord around appliance.
- This appliance is not intended for use by persons (including children) with reduced physical, sensory or mental capabilities, or lack of experience and knowledge, unless they have been given supervision or instruction concerning use of the appliance by a person responsible for their safety.
- Children should be supervised to ensure that they do not play with the appliance.
- Use this appliance only for its intended use as described in this manual. Do not use attachments not recommended by the manufacturer.
- Never operate this appliance if it has a damaged cord or plug, if it is not working properly, or if it has been dropped or damaged, or dropped into water.
- Keep the cord away from heated surfaces.
- Never use while sleeping.
- Never drop or insert any object into any opening.
- Do not use outdoors or operate where aerosol (spray) products are being used or where oxygen is being administered.
- Unit is hot when in use. Do not let heated surfaces touch eyes or skin.
- Do not place the heated unit directly on any surface while it is operating or cooling.
- Never block the air openings of the appliance or place it on a soft surface, such as a bed or couch, where the air openings may be blocked. Keep the air openings free of lint, hair, and the like.
- Do not use an extension cord with this appliance.
- Do not touch hot surfaces of the appliance. Use handles or knobs.
- Before plugging in, read the information about dual voltage contained in the Operating Instructions section of this manual.

PRODUCT FEATURES

- **Nano Titanium Plates:** Deliver highly efficient heat transfer to instantly smooth, condition, and shine hair.
- **Lightweight Stainless Steel Housing:** Corrosion and warp resistant, ensuring durability.
- **Outer Housing Heats Up:** Allows for versatile styling, enabling straightening, waving, and curling with one tool.
- **5 LED Temperature Heat Settings:** Adjustable up to 465°F (240°C) to accommodate various hair types, including the most resistant.
- **True Ion Generator:** Produces millions of ions for frizz-free shine and reduced static electricity.
- **Silicone Cool Tips:** Provide easy and safe handling during styling.
- **Locking Function:** For secure storage and travel.
- **9 ft. Swivel Cord:** Offers flexibility and ease of movement during use.
- **Dual Voltage (120V/240V):** Suitable for international travel.

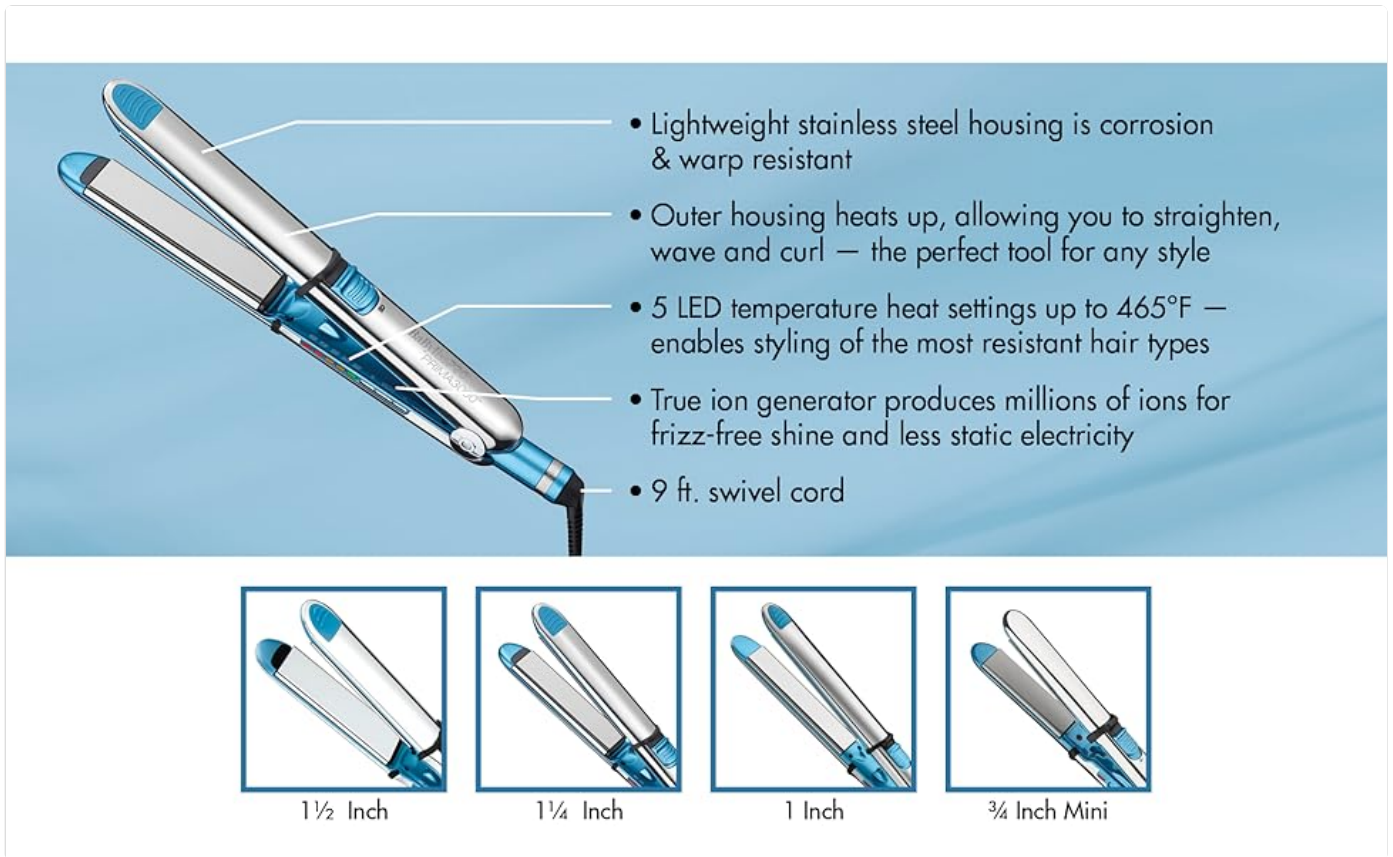


Image: An annotated diagram highlighting the key features of the BaBylissPRO Prima styling iron, such as its lightweight stainless steel housing, outer housing heating capability, 5 LED temperature settings, true ion generator, and 9 ft. swivel cord.



Image: A detailed view of the styling iron, illustrating the silicone cool tips for safe handling and the locking function for secure storage.



*Nano Titanium
Technology*



*Surround
Heat*



*Straighten,
Wave & Curl*



*120V/240V
Dual Voltage*

Image: Icons illustrating key technologies and capabilities: Nano Titanium Technology, Surround Heat, the ability to Straighten, Wave & Curl, and 120V/240V Dual Voltage.

SETUP

1. Unpack the BaBylissPRO Nano Titanium Prima Ionic Hair Straightener and remove all packaging materials.
2. Inspect the appliance for any signs of damage. Do not use if damaged.
3. Ensure your hands are dry before plugging in the appliance.
4. Plug the appliance into an appropriate electrical outlet. The appliance is dual voltage (120V/240V) and will automatically adjust to the correct voltage. An adapter may be required for international use, but a voltage converter is not needed.

OPERATING INSTRUCTIONS

Power On/Off and Temperature Selection

1. Plug the appliance into an electrical outlet.
2. Press and hold the **ON/OFF** button until the LED display illuminates.
3. Use the **+** and **-** buttons to select your desired temperature setting. The LED display will show the selected temperature.
4. Allow the appliance to heat up. The LED indicator will stop blinking when the desired temperature is reached.
5. To turn off, press and hold the **ON/OFF** button until the LED display turns off.

Temperature Styling Guide

Refer to the following guide for recommended temperature settings based on hair type:

Temperature	Hair Type
300°F (150°C)	Fragile, very fine hair
340°F (170°C)	Thin, easy-to-straighten hair
380°F (195°C)	Normal texture hair
410°F (210°C)	Wavy or curly hair
465°F (240°C)	Coarse, very thick hair



Image: A visual representation of the temperature styling gauge and the LED temperature display with its five heat settings on the styling iron.

Straightening Hair

1. Ensure hair is clean, dry, and detangled.
2. Section hair into manageable strands, approximately 1-2 inches wide.
3. Place a section of hair between the heating plates, close to the roots.
4. Gently glide the straightener down the hair section from root to tip in one smooth, continuous motion. Avoid stopping or holding the iron in one place for too long to prevent damage.
5. Repeat on all sections until desired straightness is achieved.

BaBylissPRO®

NANO TITANIUM™

Prima Ionic Styling Irons

Straighten, wave, or curl – the perfect tool for any style.







Before

Image: A person demonstrating the use of the BaBylissPRO Prima styling iron to straighten a section of hair, holding the iron firmly as it glides down the strand.

Curling or Waving Hair

The unique design of the outer housing allows for curling and waving.

1. Ensure hair is clean, dry, and detangled.
2. Section hair into manageable strands. For tighter curls, use smaller sections; for looser waves, use larger sections.
3. Open the iron and clamp a section of hair between the plates, close to the roots.
4. Rotate the iron 180 degrees away from your face, wrapping the hair around the outside of the barrel.
5. Slowly pull the iron down the length of the hair, maintaining the rotation. The outer housing will help form the curl or wave.
6. Release the hair and allow the curl to cool before styling.



Image: A stylist demonstrating the "clip, flip, pull" technique with the BaBylissPRO Prima styling iron to create effortless curls and waves.



Image: A diagram illustrating how the outer housing of the styling iron heats up, enabling its dual functionality for curling, waving, or straightening hair.

MAINTENANCE

Cleaning

1. Always unplug the appliance and allow it to cool completely before cleaning.
2. Wipe the exterior surfaces with a damp cloth. Do not use abrasive cleaners or solvents.
3. Ensure no water or moisture enters the internal components.
4. Clean the heating plates gently with a soft, damp cloth to remove any product residue.

Storage

1. Ensure the appliance is completely cool and dry before storing.
2. Engage the locking function to keep the plates closed for compact storage.
3. Store the appliance in a safe, dry location, out of reach of children.
4. Do not wrap the power cord around the appliance, as this can damage the cord. Coil it loosely.

TROUBLESHOOTING

Problem	Possible Cause	Solution
Appliance does not turn on.	Not plugged in correctly; power outlet issue; damaged cord/plug.	Ensure plug is fully inserted. Test outlet with another device. If cord/plug is damaged, discontinue use and contact customer support.
Appliance not heating up.	Temperature not selected; internal malfunction.	Ensure a temperature setting is selected using the +/- buttons. If still not heating, contact customer support.

Problem	Possible Cause	Solution
Hair is not straightening/curling effectively.	Incorrect temperature setting; hair not clean/dry; sections too large; improper technique.	Adjust temperature according to hair type (refer to guide). Ensure hair is clean and completely dry. Work with smaller, manageable sections. Review operating instructions for proper technique.
Frizz or static after styling.	Hair not fully dry; product residue on plates; environmental factors.	Ensure hair is completely dry before styling. Clean plates regularly. Consider using anti-frizz products.

SPECIFICATIONS

- **Model Number:** BNTRB3100TUC
- **Plate Material:** Nano Titanium
- **Housing Material:** Stainless Steel
- **Temperature Settings:** 5 LED settings, up to 465°F (240°C)
- **Technology:** IonMultiplier Technology, True Ion Generator
- **Cord Length:** 9 ft. Swivel Cord
- **Voltage:** 120V/240V Dual Voltage
- **Product Dimensions:** 13 x 1 x 1 inches
- **Item Weight:** 1.79 Pounds
- **UPC:** 074108475077

WARRANTY AND SUPPORT

This BaBylissPRO product comes with a **4-YEAR LIMITED WARRANTY**. For detailed warranty information, service, or support, please refer to the official BaBylissPRO website or contact their customer service department. Please retain your proof of purchase for warranty claims.

ADDITIONAL RESOURCES

For further information, you may consult the official PDF documents:

- [User Guide \(PDF\)](#)
- [User Manual \(PDF\)](#)

VIDEO DEMONSTRATIONS

No official product videos with 'Seller' creator type or relevant 'preview' videos were found in the provided data to embed directly. Please refer to the manufacturer's official channels for video demonstrations.

