

## TYPHON Terror X

# TYPHON Terror X Storm Mini Excavator Instruction Manual

Model: Terror X

## 1. INTRODUCTION

The TYPHON Terror X Storm Mini Excavator is engineered for small construction projects, offering compact design and reliable performance. This versatile machine is suitable for various tasks in gardens, farms, parks, and roads, including digging, drilling, grabbing, bull-dozing, ditch-cleaning, small excavations, rock-breaking, and landscaping.

## 2. SAFETY INFORMATION

Always prioritize safety when operating heavy machinery. Read and understand all safety decals on the machine and in this manual before operation. Failure to follow safety instructions can result in serious injury or death.

- Wear appropriate personal protective equipment (PPE), including a hard hat, safety glasses, hearing protection, and sturdy footwear.
- Ensure the work area is clear of bystanders, especially children and pets.
- Inspect the machine before each use for any damage, leaks, or loose parts.
- Operate the excavator on stable, level ground whenever possible. Avoid steep slopes.
- Never operate the machine under the influence of alcohol or drugs.
- Familiarize yourself with all controls and their functions before starting the engine.

## 3. PRODUCT OVERVIEW

The TYPHON Terror X Storm Mini Excavator is designed for ease of use and robust performance in confined spaces. It features a high-performance engine and user-friendly controls.

### Key Features:

- Compact and reliable design for easy maneuverability in small areas.
- High-performance engine for smooth functionality and easy maintenance.
- 380mm wide bucket and platform ground clearance for versatile operation.
- Equipped with LED work lights for improved visibility.
- Safety switch for pilot control.
- Foldable blade for convenience.

#### **Included Components:**

- 1 x Standard Digging Excavator Bucket
- 1 x Tool Box
- 1 x Canopy
- 1 x Digital Manual (this document)



Figure 1: TYPHON Terror X Storm Mini Excavator

# Features of the Terror X STORM



Figure 2: Key Features of the Terror X Storm

## 4. SETUP AND ATTACHMENT INSTALLATION

Before operating your mini excavator, ensure it is properly set up and any necessary attachments are securely installed.

### Initial Checks:

1. Verify all fluid levels (engine oil, hydraulic fluid, fuel).
2. Check tire pressure (if applicable) or track tension.
3. Ensure all safety guards and covers are in place and secure.
4. Confirm the battery is fully charged and connections are tight.

### Installing Attachments:

The TYPHON Terror X Storm Mini Excavator supports various attachments to enhance its functionality. Always ensure the machine is turned off and the parking brake is engaged before changing attachments.

Your browser does not support the video tag.

Video 1: Demonstrates how various attachments can be used with mini excavators, highlighting their versatility.

To install an attachment:

1. Position the excavator arm to align with the attachment's mounting points.
2. Securely connect the attachment using the appropriate pins and fasteners.
3. Connect any hydraulic lines if required, ensuring they are free from kinks or damage.
4. Test the attachment's function at a low speed in a safe area before full operation.

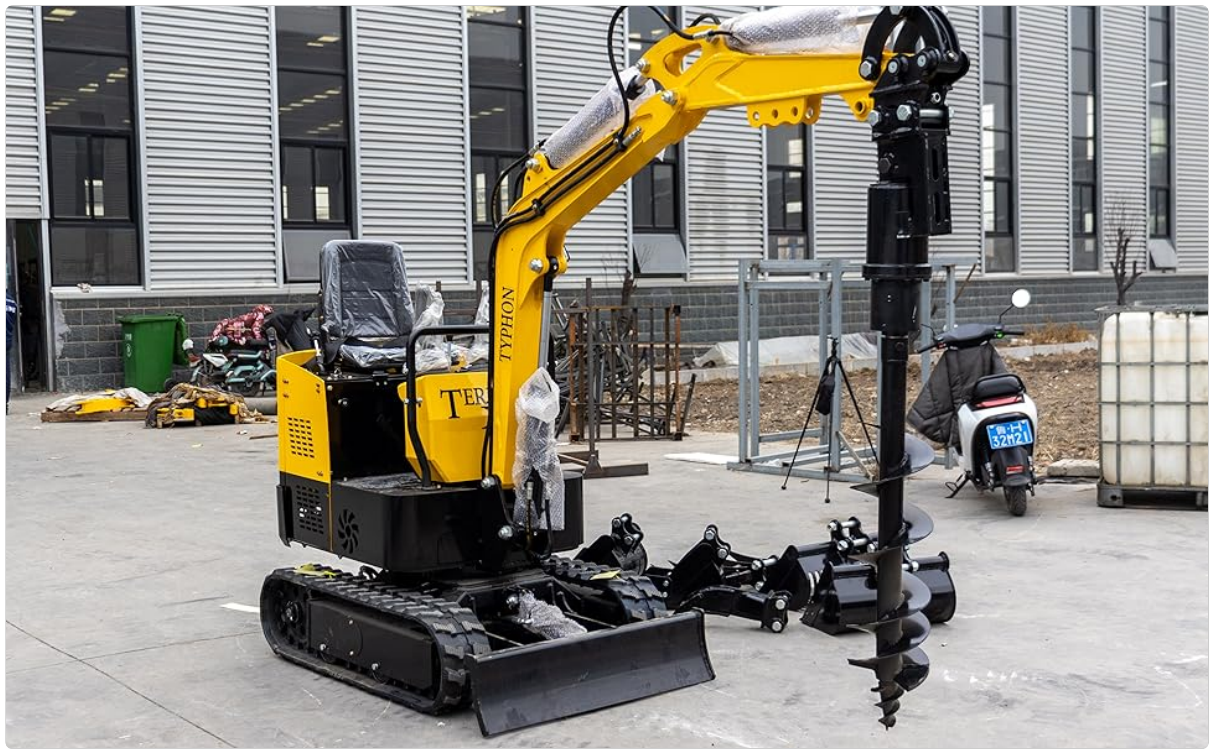


Figure 3: Mini Excavator with Auger Attachment

## 5. OPERATING INSTRUCTIONS

Operating the TYPHON Terror X Storm Mini Excavator requires familiarity with its controls and safe operating practices.

### Starting the Engine:

1. Ensure the safety switch for pilot control is in the OFF position.
2. Turn the ignition key to the START position.
3. Allow the engine to warm up for a few minutes before operating.

### Controls Overview:

The excavator features hydraulic controls for precise movement of the boom, arm, and bucket. The boom swing allows horizontal movement of the arm without repositioning the entire machine, and the zero tail swing design enables operation in tight spaces.



Figure 4: Excavator Control Panel

### Basic Operation:

- **Driving:** Use the track levers to control forward, reverse, and turning movements.
- **Digging:** Utilize the joystick controls for the boom, arm, and bucket to perform digging operations.
- **Dozing:** The front blade can be used for leveling, backfilling, or stabilizing the machine during digging.

Your browser does not support the video tag.

Video 2: Demonstrates the operation of the TYPHON TERROR mini excavator, showing arm and bucket movements.

Your browser does not support the video tag.

Video 3: Shows the 1-ton mini excavator in operation, highlighting its mobility and digging capabilities.

Your browser does not support the video tag.

Video 4: Features the TYPHON TERROR XVIII mini excavator demonstrating its operational range and boom swing.

## 6. MAINTENANCE

Regular maintenance is crucial for the longevity and optimal performance of your TYPHON Terror X Storm Mini Excavator.

Daily Checks:

- Check engine oil level.
- Inspect hydraulic fluid level.
- Examine tracks for damage or excessive wear.
- Clean debris from the engine compartment and radiator.
- Lubricate all grease points.

Periodic Maintenance:

- Change engine oil and filter as per manufacturer recommendations.
- Replace air filter regularly.
- Check and adjust track tension.
- Inspect hydraulic hoses and fittings for leaks or damage.

7. TROUBLESHOOTING

This section provides solutions to common issues you might encounter with your mini excavator. For complex problems, contact qualified service personnel.

Problem	Possible Cause	Solution
Engine won't start	Low fuel, dead battery, faulty ignition	Check fuel level, charge/replace battery, inspect ignition system
Loss of hydraulic power	Low hydraulic fluid, clogged filter, pump issue	Check fluid level, replace filter, consult service manual
Overheating	Low coolant, clogged radiator, faulty thermostat	Check coolant, clean radiator, replace thermostat
Unusual noises	Loose parts, worn bearings, engine issue	Inspect for loose components, check for worn parts, contact service

8. SPECIFICATIONS

Detailed technical specifications for the TYPHON Terror X Storm Mini Excavator.

TYPHON X STORM	
Operate Weight	1,000 kg
Digging bucket capacity	0.025cbm
Bucket width	380mm
Engine	Briggs & Stratton
Power	13.5hp
Bore stroke	Single Cylinder
Climbing capability	30°
MAIN DIMENSION	
Overall dimension( <u>LxWxH</u> )	2775 x930x1539 mm
Total length of track	1230mm
Platform ground clearance	380 mm
Track width	180 mm
OPERATING RANGE	
Max. Digging depth	1650 mm
Max. Digging height	2650 mm
Max. Dumping height	1850 mm
Max. Digging radius on ground	2850 mm
Min. Rotation radius	1350 mm
Max. Upgrade height of bulldozer blade	325 mm
Max. Digging depth of bulldozer blade	255 mm

Figure 5: TYPHON Terror X Storm Specifications

Specification	Value
Product Dimensions	109.25 x 36.61 x 60.59 inches
Manufacturer	TYPHON
ASIN	B0CDM586FV
Item model number	Terror X
Operating Weight	1,000 kg
Digging Bucket Capacity	0.025 cbm
Bucket Width	380 mm
Engine	Briggs & Stratton
Power	13.5 hp
Bore Stroke	Single Cylinder
Climbing Capability	30°
Overall Dimension (LxWxH)	2775 x 930 x 1539 mm
Total Length of Track	1230 mm

Specification	Value
Platform Ground Clearance	380 mm
Track Width	180 mm
Max. Digging Depth	1650 mm
Max. Digging Height	2650 mm
Max. Dumping Height	1850 mm
Max. Digging Radius on Ground	2850 mm
Min. Rotation Radius	1350 mm
Max. Upgrade Height of Bulldozer Blade	325 mm
Max. Digging Depth of Bulldozer Blade	255 mm

## 9. WARRANTY AND SUPPORT

Your TYPHON Terror X Storm Mini Excavator comes with a digital manual and a tool box for your convenience. For specific warranty details, please refer to the documentation included with your purchase. For any technical assistance, parts, or service inquiries, please contact TYPHONMachinery directly. TYPHON is committed to providing durable and affordable heavy equipment backed by effective sales, after-sales service, and spare parts distribution. For further support, visit the [TYPHON Store on Amazon](#).