

## Moman H2

# Moman H2 Motorcycle Intercom Headset User Manual

Model: H2 | Brand: Moman

## INTRODUCTION

The Moman H2 Motorcycle Intercom Headset is designed to provide seamless communication and entertainment for motorcycle riders. Featuring advanced Bluetooth technology, noise reduction, and a durable waterproof design, the H2 ensures a clear and reliable connection for up to two riders over a distance of 1000 meters. This manual provides detailed instructions for setting up, operating, maintaining, and troubleshooting your Moman H2 headset.

## PRODUCT OVERVIEW AND KEY FEATURES

The Moman H2 headset offers a range of features to enhance your riding experience:

- **Two-Way Intercom:** Real-time communication for two riders up to 1000 meters (0.6 miles).
- **Advanced Wireless Connectivity:** Equipped with Bluetooth 5.1 for faster transmission, longer distance, more stable connection, and improved efficiency.
- **Hands-Free Communication:** Supports hands-free calls, including answering, hanging up, and rejecting calls.
- **High-Quality Audio:** Features 40mm Hi-Fi speakers for excellent sound quality for music and calls.
- **Dual Noise Reduction:** Incorporates DSP (Digital Signal Processing) and CVC (Clear Voice Capture) noise cancellation technology to minimize engine, wind, and traffic noise, ensuring clear audio even at high speeds.
- **Integrated FM Radio:** Allows you to search and select clear FM channels.
- **AI Voice Assistant:** Access your smartphone's voice assistant for hands-free control.
- **Durable and Weatherproof:** IP65 waterproof and dustproof rating, capable of withstanding harsh weather conditions including dust, rain, storms, and snow. Operates in temperatures from -20°C to 50°C (-4°F to 122°F).
- **Long Battery Life:** Built-in 900mAh battery provides up to 20 hours of continuous operation (music/call) and 300 hours of standby time on a single charge.
- **Easy Control:** Designed with large physical buttons and a rotary knob for easy operation, even while wearing gloves.
- **Wide Compatibility:** Applicable to most open-face, modular, and full-face helmets.

# H2 PRO

## FUNCTION OVERVIEW



Wireless 5.1



Full Duplex  
Intercom



AI Voice  
Assistant



Music Share



FM  
Radio



CVC&DSP  
Noise Cancellation



IP65  
Waterproof



900mAh  
Battery



Figure 1: Overview of Moman H2 Pro functions and features.



# 2 Riders-1000M Communication System

Hands free and stable conversation

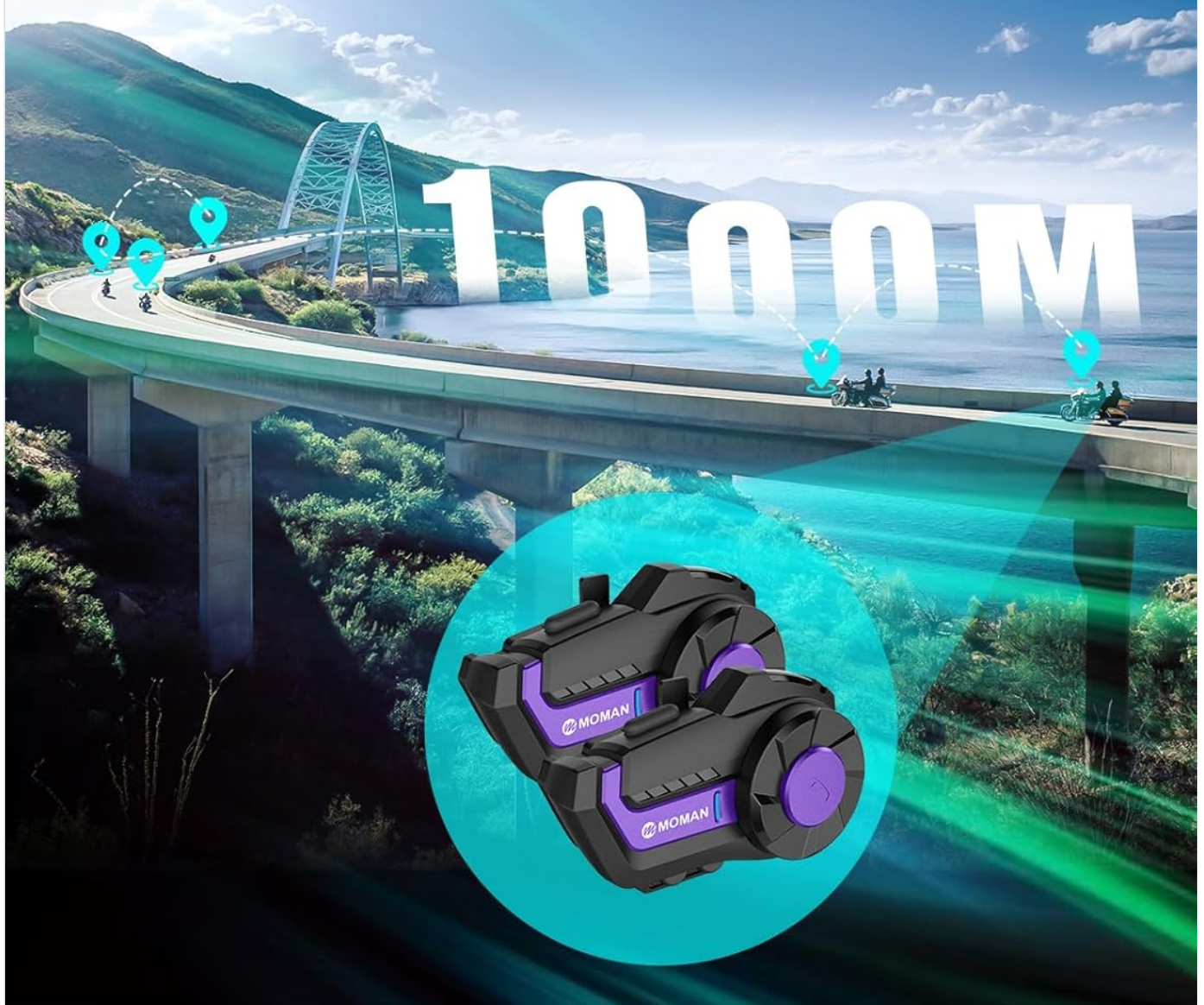


Figure 2: The Moman H2 supports communication between two riders up to 1000 meters.

## PACKAGE CONTENTS

Before you begin, please check the package to ensure all components are present:

- Moman H2 Pro Intercom Unit x 1
- Velcro Clip x 1
- Back Clip x 1
- Hook and Loop Fasteners x 1
- Pair of Speakers with Microphone x 1
- Headphone Velcro x 4
- USB Cable x 1
- Screw Driver x 1
- User Manual x 1

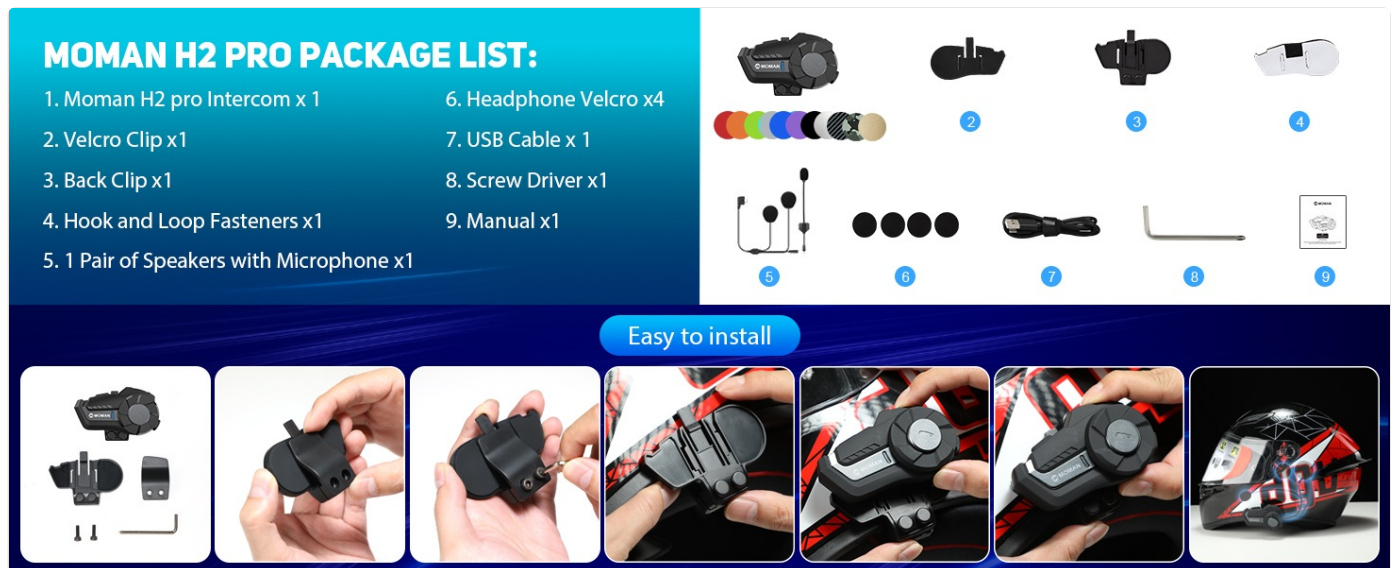


Figure 3: Moman H2 Pro Package List.

## SETUP AND INSTALLATION

The Moman H2 intercom can be installed on your helmet using either a back clip or Velcro fasteners. Choose the method that best suits your helmet and preference.

### Installation Steps:

1. **Choose Mounting Method:** Decide whether to use the back clip for a secure, semi-permanent attachment or the Velcro for easier removal and repositioning.
2. **Attach Intercom Unit:**
  - *Using Back Clip:* Securely attach the back clip to the side of your helmet. Then slide the Moman H2 intercom unit onto the clip until it clicks into place.
  - *Using Velcro:* Apply the adhesive Velcro strip to a flat, clean surface on the side of your helmet. Attach the corresponding Velcro on the intercom unit and press firmly to secure.
3. **Install Speakers:** Place the 40mm Hi-Fi speakers inside your helmet's ear pockets. Use the provided headphone Velcro pads to secure them in position. Ensure the speakers are aligned with your ears for optimal sound.
4. **Position Microphone:** Attach the microphone to the inside of your helmet, near your mouth. Ensure it is positioned to pick up your voice clearly without being obstructed by padding or wind.
5. **Connect Cables:** Route the speaker and microphone cables neatly within the helmet padding and connect them to the appropriate ports on the Moman H2 intercom unit.
6. **Initial Charge:** Before first use, fully charge the Moman H2 using the provided USB cable. Connect the USB cable

to the charging interface on the unit and a power source. The indicator light will show charging status.

### MOMAN H2 PRO PACKAGE LIST:

1. Moman H2 pro Intercom x 1

2. Velcro Clip x1

3. Back Clip x1

4. Hook and Loop Fasteners x1

5. 1 Pair of Speakers with Microphone x1

6. Headphone Velcro x4

7. USB Cable x 1

8. Screw Driver x1

9. Manual x1





Easy to install



Figure 4: Easy installation guide for the Moman H2.

## OPERATING INSTRUCTIONS

The Moman H2 features intuitive controls for various functions. Familiarize yourself with the buttons and rotary knob for easy operation while riding.

### Button Functions:

Control Element	Action	Function
On/Off Key	Press and Hold	Power On/Off
	Short Press	Change Language (when powered on)
	Double Press	Last Call Redial
Function Key	Short Press	Play/Pause Music
	Press and Hold	Share Music (initiate music sharing with another H2 unit)
	Single Press (during call)	End/Reject Call
	Double Press	Activate FM Radio
Rotary Knob	Triple Press	Activate Voice Assistant
	Rotate Clockwise	Volume Up / Next Song (short rotation) / Change FM Channel (long rotation)
	Rotate Counter-clockwise	Volume Down / Previous Song (short rotation) / Change FM Channel (long rotation)

### Pairing and Intercom Usage:

#### 1. Bluetooth Pairing (with Phone):



- Ensure the H2 is powered off.
- Press and hold the On/Off Key until the indicator light flashes rapidly, indicating pairing mode.
- On your smartphone, enable Bluetooth and search for "Moman H2".
- Select "Moman H2" to connect. The indicator light will change to a slow flash or solid blue once paired.

## 2. Intercom Pairing (between two H2 units):

- Ensure both H2 units are powered off.
- On both units, press and hold the On/Off Key until they enter pairing mode (rapid flashing light).
- Once both are in pairing mode, they will automatically search and connect to each other. The indicator lights will change once connected.
- To initiate intercom conversation, a short press on the Function Key on either unit might be required (refer to specific manual for exact trigger).

3. **Music Playback:** Once paired with your phone, use the Function Key to play or pause music. Use the Rotary Knob to adjust volume or skip tracks.
4. **FM Radio:** Double press the Function Key to activate FM radio. Use the Rotary Knob to change stations.
5. **Voice Assistant:** Triple press the Function Key to activate your phone's voice assistant (e.g., Siri, Google Assistant).



Figure 5: Precise Function and Easy Control layout.

## MAINTENANCE

Proper maintenance will ensure the longevity and optimal performance of your Moman H2 headset.

- **Cleaning:** Wipe the unit with a soft, damp cloth. Do not use harsh chemicals, cleaning solvents, or strong detergents.
- **Water Exposure:** While the device is IP65 waterproof, avoid prolonged submersion in water. Ensure the charging port cover is securely closed when not charging to maintain water resistance.
- **Storage:** Store the headset in a cool, dry place when not in use. Avoid extreme temperatures.
- **Battery Care:** To preserve battery life, charge the unit regularly, even if not used frequently. Avoid fully discharging the battery for extended periods.

## TROUBLESHOOTING

If you encounter issues with your Moman H2 headset, refer to the following common problems and solutions:

Problem	Possible Cause	Solution
Device does not power on.	Low battery.	Charge the device fully using the provided USB cable.
Cannot pair with phone/another unit.	Device not in pairing mode; Bluetooth off on phone; too far apart.	Ensure device is in pairing mode (rapid flashing light). Turn Bluetooth on phone. Bring devices closer (within 1 meter for pairing). Try resetting the device.
Poor audio quality / Noise.	Microphone/speakers improperly positioned; environmental noise; low signal.	Adjust microphone closer to mouth. Ensure speakers are aligned with ears. Move away from strong electromagnetic interference. DSP&CVC noise reduction should handle most environmental noise.
Intercom range is shorter than expected.	Obstructions (buildings, terrain); heavy radio interference.	Ensure clear line of sight between units. Avoid areas with high radio frequency interference.
Buttons unresponsive.	Device frozen; physical damage.	Try restarting the device. If unresponsive, allow battery to drain completely and then recharge. If issue persists, contact customer support.

## SPECIFICATIONS

Feature	Detail
Model Name	H2
Brand	Moman
Intercom Range	Up to 1000 meters (0.6 miles) for 2 riders
Bluetooth Version	5.1
Battery Capacity	900 mAh
Working Time	Up to 20 hours (music/call)
Standby Time	Up to 300 hours
Charging Time	Approximately 2 hours
Water Resistance	IP65 (Waterproof and Dustproof)
Operating Temperature	-20°C to 50°C (-4°F to 122°F)
Speaker Size	40 mm Hi-Fi Speakers
Noise Reduction	DSP & CVC Technology
Material	Thermoplastic Elastomer (TPE)
Control Type	Physical Buttons, Rotary Knob

# WARRANTY AND SUPPORT

Moman products are designed for durability and performance. For specific warranty details, please refer to the warranty card included in your product package or visit the official Moman website. For technical support, troubleshooting assistance beyond this manual, or inquiries about replacement parts, please contact Moman customer service through their official channels.





While specific warranty information is not available in this document, Moman is committed to providing premium products, superior quality, and professional service.





Figure 6: Moman's commitment to quality and service.

© 2025 Moman. All rights reserved.  
This manual is subject to change without notice.

## Related Documents - H2

	<p><a href="#">MOMAN H2 PRO Headset Helmet Intercom User Manual</a></p> <p>The MOMAN H2 PRO Headset Helmet Intercom User Manual provides comprehensive instructions for operating, installing, and maintaining the H2 PRO Bluetooth intercom system. Learn about features like music control, phone calls, FM radio, multi-intercom pairing, and troubleshooting for an optimal helmet communication experience.</p>
	<p><a href="#">MOMAN H2 PRO Motorcycle Helmet Intercom User Manual</a></p> <p>Detailed user manual for the MOMAN H2 PRO motorcycle helmet intercom. This guide provides comprehensive instructions on installation, operation, phone and music controls, FM radio functions, Bluetooth pairing, music sharing, technical specifications, charging, and important safety notes.</p>
	<p><a href="#">MOMAN H2 Helmet Intercom User Manual</a></p> <p>User manual for the MOMAN H2 2-Rider Kit Helmet Intercom, detailing installation, operation, features like Bluetooth pairing, music playback, FM radio, and volume control.</p>
	<p><a href="#">MOMAN H4C Motorcycle Helmet Headset: User Manual &amp; Features</a></p> <p>Comprehensive guide to the MOMAN H4C motorcycle helmet headset, detailing its Bluetooth connectivity, integrated recorder, app control via Roadcam, and operational instructions. Includes specifications and care tips.</p>



	<p><a href="#">MOMAN H4 Plus Wireless Helmet Headset User Manual</a></p> <p>User manual for the MOMAN H4 Plus Wireless Helmet Headset, detailing product features, operation instructions, specifications, and safety information.</p>
	<p><a href="#">MOMAN CP-S Motorcycle Helmet Intercom User Guide</a></p> <p>A comprehensive guide to the features and operation of the MOMAN CP-S Motorcycle Helmet Intercom, covering phone calls, intercom functionality, and music playback.</p>