

Moen 4325

Moen Greenfield Chrome Bathroom Diverter Tub Spout (Model 4325) User Manual

Comprehensive instructions for installation, operation, and maintenance.

INTRODUCTION

This manual provides detailed instructions for the installation, operation, and maintenance of your Moen Greenfield Chrome Bathroom 1/2-Inch Slip Fit Connection Diverter Tub Spout, Model 4325. Please read all instructions carefully before beginning installation to ensure proper function and to prevent damage.

The Moen Greenfield diverter tub spout is designed to complement the Greenfield bathroom collection, featuring a chrome finish and a diverter mechanism to direct water flow to a showerhead.

SAFETY INFORMATION

- Always turn off the main water supply before beginning any plumbing work.
- Wear appropriate personal protective equipment, such as safety glasses and gloves.
- If you are unsure about any part of the installation process, consult a qualified plumber.
- Ensure all connections are secure to prevent leaks.

PACKAGE CONTENTS

Verify that all components are present before beginning installation:

- Moen Greenfield Diverter Tub Spout (Model 4325)
- Installation Instructions (This manual)
- *Note: Additional components for the full Greenfield collection are sold separately.*



Figure 1: Moen Greenfield Chrome Diverter Tub Spout, Model 4325. This image shows the complete tub spout with its polished chrome finish and integrated diverter lift rod.

TOOLS REQUIRED (NOT INCLUDED)

- Adjustable wrench or pipe wrench
 - Screwdriver (Phillips or flathead, depending on existing setup)
 - Hex wrench (5/32" for slip fit connection, if not already present)
 - Plumber's tape (thread seal tape)
 - Clean cloth
-

INSTALLATION INSTRUCTIONS

This tub spout utilizes a 1/2-inch slip fit connection. Ensure your existing plumbing is compatible.

Step 1: Prepare the Installation Area

1. Turn off the main water supply to your home.
2. Remove your existing tub spout. For slip fit spouts, locate the hex screw on the underside of the spout, loosen it with a hex wrench, and pull the spout off the copper pipe extending from the wall. For threaded spouts, unscrew the spout counter-clockwise.
3. Clean the exposed copper pipe and the surrounding wall area.

Step 2: Understand Connection Types

It is important to identify the type of connection you have. The Moen Greenfield 4325 is designed for a **Slip Fit (CC)** connection.

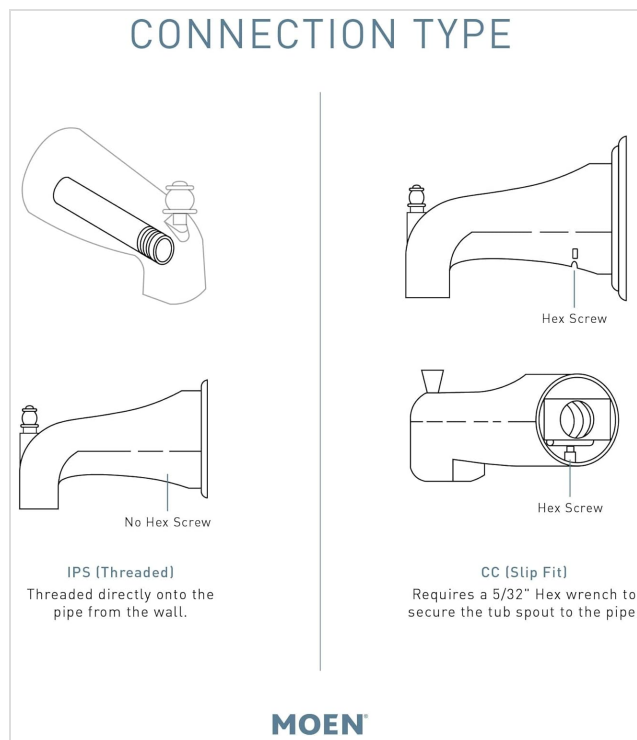


Figure 2: Comparison of IPS (threaded) and CC (slip fit) connection types. The Moen 4325 uses a CC (Slip Fit) connection, which requires a 5/32" hex wrench to secure it to the pipe.

For a **CC (Slip Fit)** connection, the tub spout slides over a smooth copper pipe extending from the wall and is secured by a hex screw.

Step 3: Install the New Tub Spout

1. Slide the new Moen Greenfield tub spout onto the copper pipe extending from the wall. Ensure it is pushed firmly against the wall.
2. Locate the hex screw on the underside of the tub spout. Using a 5/32" hex wrench, tighten this screw to secure the spout to the pipe. Do not overtighten.
3. Ensure the spout is level and flush with the wall.

Step 4: Test for Leaks

1. Slowly turn the main water supply back on.
2. Turn on the bathtub faucet and check for any leaks around the base of the tub spout.
3. If leaks are present, turn off the water supply, adjust the spout, and re-tighten the hex screw as necessary.

OPERATING INSTRUCTIONS

The Moen Greenfield Diverter Tub Spout features a lift rod for diverting water flow.



Figure 3: Close-up view of the diverter lift rod on the Moen Greenfield Tub Spout. This rod is used to switch water flow between the tub spout and the showerhead.

- **To fill the tub:** Ensure the lift rod on top of the spout is in the down position. Water will flow directly from the tub spout.
- **To use the showerhead:** Pull the lift rod on top of the spout upwards. This will divert the water flow from the tub spout to the connected showerhead.
- **To return to tub flow:** Push the lift rod back down. Water will resume flowing from the tub spout.

MAINTENANCE

Regular cleaning and maintenance will help preserve the finish and functionality of your tub spout.

- **Cleaning the Finish:** Clean the chrome finish with a soft, damp cloth and mild soap. Avoid abrasive cleaners, harsh chemicals, or scouring pads, as these can damage the finish.
- **Diverter Mechanism:** If the diverter becomes stiff or difficult to operate, ensure no debris is obstructing the lift rod. Avoid forcing the mechanism.

TROUBLESHOOTING

Problem	Possible Cause	Solution
Water leaks from the base of the spout.	Loose slip fit connection.	Turn off water supply. Tighten the hex screw on the underside of the spout. Ensure the spout is fully seated against the wall.
Water does not fully divert to the showerhead.	Diverter mechanism partially obstructed or worn.	Ensure the lift rod is fully pulled up. Check for debris around the lift rod. If the issue persists, the diverter may require replacement.
Low water flow from the spout or showerhead.	Main water supply partially closed or other plumbing issues.	Check that the main water supply is fully open. Consult a plumber if low flow persists across multiple fixtures.

Problem	Possible Cause	Solution
---------	----------------	----------

SPECIFICATIONS

Brand	Moen
Model Number	4325
Model Name	Greenfield
Finish	Chrome (Polished)
Material	Metal
Connection Size	1/2-inch
Connection Type	Slip Fit (CC)
Spout Reach	7.38 Inches
Item Weight	1.2 Pounds
Product Dimensions (D x W x H)	6.25" x 2.5" x 2.5"
Special Feature	Diverting (Lift Rod)
Mounting Type	Wall Mount

WARRANTY AND SUPPORT

Your Moen Greenfield Diverter Tub Spout is backed by Moen's Limited Lifetime Warranty. For detailed warranty information, product support, or to purchase replacement parts, please visit the official Moen website or contact Moen customer service.

Manufacturer: Moen Incorporated

Website: www.moen.com



[Moen io™ Roman Tub Spout Installation Guide and Limited Lifetime Warranty](#)

Installation instructions, warranty details, and contact information for the Moen io™ Roman Tub Spout. Includes care tips and troubleshooting advice.



[Moen Two-Handle Roman Tub Faucet Trim Kit with Hand Shower - Product Information](#)

Find essential information for the Moen Two-Handle Roman Tub Faucet Trim Kit with Hand Shower (Model INS10696A), including contact support, helpful tools, safety tips, and online registration instructions.



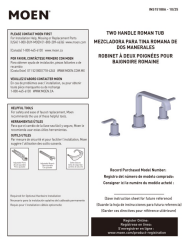
[Moen One Handle Tub/Shower Valve Trim Installation Instructions](#)

This document provides installation instructions and troubleshooting guidance for Moen one-handle tub and shower valve trims, including the One Handle Tub/Shower Valve Trim and One Handle Shower Only Valve Trim. It covers various plumbing rough-in types, installation schematics, trim installation, temperature limit stop adjustment, care instructions, and warranty information.



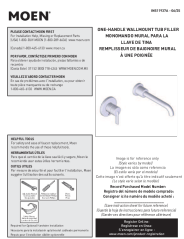
[Moen Two-Handle Bathroom Sink Faucet Installation and Warranty Guide](#)

Comprehensive guide for installing and maintaining Moen two-handle bathroom sink faucets designed for 4-inch center installations. Includes parts identification, step-by-step instructions, consumer information on lead, and lifetime limited warranty details.



[Moen Two Handle Roman Tub Faucet Installation Guide and Warranty Information \(INS15188A\)](#)

Step-by-step installation instructions, parts list, and limited lifetime warranty details for the Moen Two Handle Roman Tub faucet, model INS15188A. Includes contact information and product registration.



[Moen One-Handle Wallmount Tub Filler Installation Guide](#)

Comprehensive installation instructions, parts list, and warranty details for the Moen One-Handle Wallmount Tub Filler. Includes step-by-step guidance for proper setup and troubleshooting tips.