

Manuals+

[Q & A](#) | [Deep Search](#) | [Upload](#)

manuals.plus /

› [REVLON](#) /

› [REVLON Dry Max Hair Dryer with Diffuser and Concentrator \(Model RVDR5336N1\) User Manual](#)

REVLON RVDR5336N1

REVLON Dry Max Hair Dryer User Manual

Model: RVDR5336N1

INTRODUCTION

The REVLON Dry Max Hair Dryer is engineered to provide efficient and gentle hair drying. It incorporates Gentle Infralights Technology for faster drying and features Triple Ceramic Titanium coating and Tourmaline Ionic Technology to reduce frizz and enhance shine. This manual provides essential information for safe and effective use of your hair dryer.



Image: REVLON Dry Max Hair Dryer with its included diffuser and concentrator attachments.

SAFETY INFORMATION

Please read and understand all safety instructions before using this appliance to prevent injury or damage.

- Keep the hair dryer out of reach of children.
- Do not rinse or submerge the appliance in water or any other liquid.
- Ensure the power plug and cord are kept away from heated surfaces during operation.
- Do not use the hair dryer while bathing or in close proximity to water.
- Avoid wrapping the power cord tightly around the appliance, as this can cause damage to the cord.

PRODUCT FEATURES

The REVLON Dry Max Hair Dryer is equipped with several features designed for optimal hair care and styling:

- **Triple Ceramic Titanium and Tourmaline Ionic Technology:** This combination helps to prevent frizz, smooth hair, and add shine for a healthy appearance.
- **Gentle Infralights Technology:** Designed to speed up drying time by up to 45%* while helping to maintain the hair's natural moisture balance, thereby reducing potential heat damage.

- **3 Heat / 2 Speed Settings with LED Indicator:** Provides control over temperature and airflow for customized styling.
- **Cool Shot Feature:** A button to release cool air, which helps to seal the hair's cuticle and boost shine, setting your style.
- **Lightweight, Full Size Design:** Offers comfortable styling control due to its sleek shape and narrow handle.
- **Attachments:** Includes a Smoothing Concentrator for precise styling and a Volumizing Diffuser for enhancing natural curls and waves.

*Compared to RVDR5010, Revlon Frizz Control Styler.



Image: Overview of the hair dryer highlighting key features such as Gentle Infralights Technology, 3X Ceramic Titanium Coating, Cool Shot Button, 3 Heat/2 Speed Settings, and Removable End Cap.



REVLON

Dry Max Hair Dryer

Fast Heat Styler

Image: Detailed view of the hair dryer's internal components, illustrating the Gentle Infralights Technology and Triple Ceramic Titanium Coating for enhanced drying and hair health.

SETUP AND OPERATION

1. **Unpack:** Carefully remove the hair dryer and all accessories from its packaging.
2. **Choose Attachment:** Select either the Smoothing Concentrator or the Volumizing Diffuser based on your desired styling outcome. The concentrator directs airflow for precise styling, while the diffuser softens airflow to enhance natural curls and waves.
3. **Attach:** Securely attach the chosen accessory to the nozzle of the hair dryer.
4. **Power On and Adjust Settings:** Plug the hair dryer into a suitable power outlet. Use the 3 heat and 2 speed settings to customize the temperature and airflow according to your hair type and styling needs. The LED indicators will show the selected settings.
5. **Style Hair:** Begin drying and styling your hair as desired. For precise styling, use the concentrator to direct heat and airflow to specific sections. For natural curls, use the diffuser to gently dry and define them.
6. **Cool Shot:** To set your style and add shine, press the cool shot button for a burst of cool air.
7. **Power Off:** Once styling is complete, switch off the hair dryer and unplug it from the power outlet.

Concentrator
for precise styling

Diffuser
for natural curls

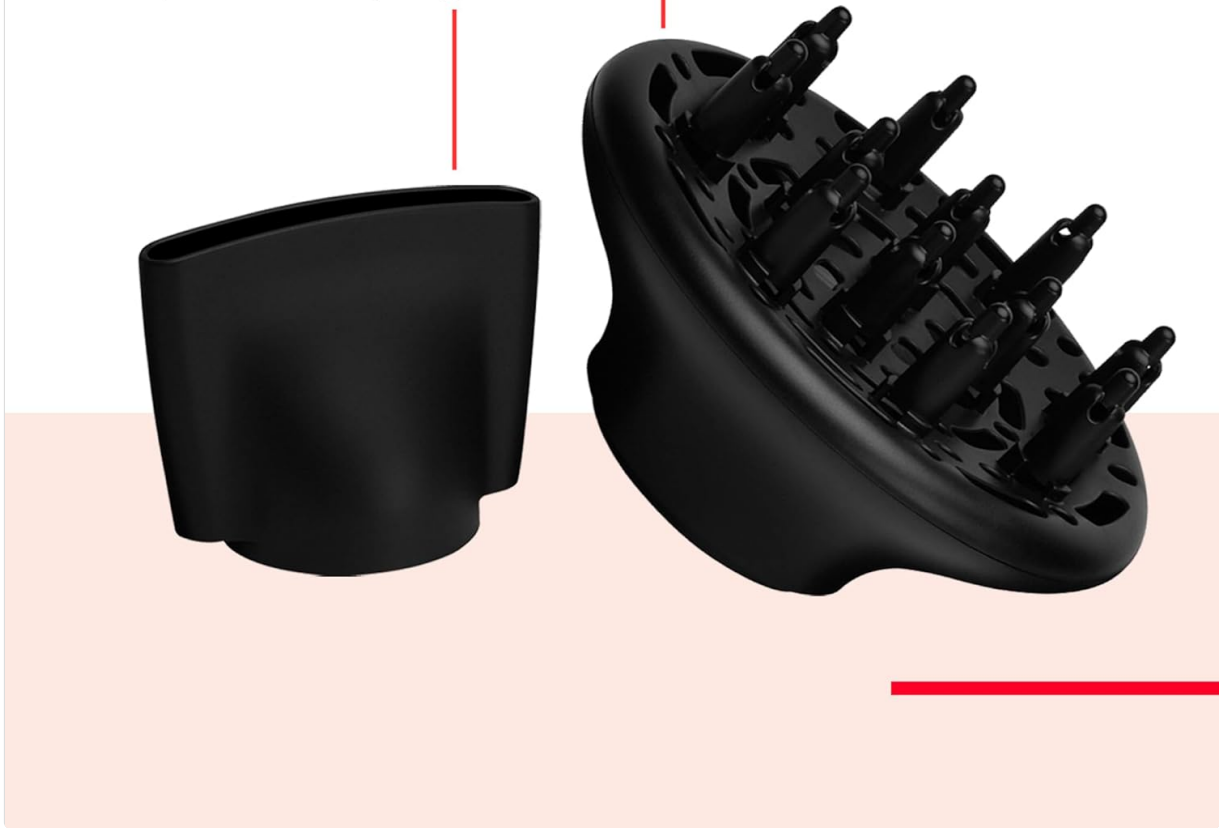


Image: The Smoothing Concentrator and Volumizing Diffuser attachments, designed for versatile styling.

Your browser does not support the video tag.

Video: Demonstration of attaching the concentrator and using the hair dryer for straightening hair. (Note: 'video1.m3u8' is a placeholder URL for an m3u8 stream.)

Your browser does not support the video tag.

Video: Overview of the REVLON Dry Max Hair Dryer's features and benefits, including its fast drying capability and frizz reduction. (Note: 'video2.m3u8' is a placeholder URL for an m3u8 stream.)

MAINTENANCE

Regular maintenance ensures the longevity and optimal performance of your hair dryer.

- **Cleaning the End Cap:** The hair dryer features a removable end cap, which makes it easy to clean. Regularly remove the end cap and clear any accumulated lint or hair to prevent blockages and extend the motor's life.
- **Storage:** Store the hair dryer safely using its hanging ring. Avoid wrapping the cord tightly around the appliance, as this can cause damage.

TROUBLESHOOTING

If you encounter any issues with your REVLON Dry Max Hair Dryer, please consider the following:

- **No Power:** Ensure the hair dryer is securely plugged into a working electrical outlet. Check your household's circuit breaker if necessary.
- **Reduced Airflow:** Check the removable end cap and clean any lint or debris that may be obstructing the airflow.
- **Overheating:** If the hair dryer stops working due to overheating, unplug it and allow it to cool down for several minutes before attempting to use it again. Ensure the air intake is clear.

If problems persist after attempting these steps, please contact customer support for further assistance.

SPECIFICATIONS

Attribute	Detail
Brand	REVLON
Model Number	RVDR5336N1
Product Dimensions	4.4 x 11.3 x 9.7 inches
Item Weight	2.4 Pounds
Wattage	1875 watts
Power Source	Corded Electric
Material	Titanium
Color	Silver
UPC	761318053361, 761318153368

WARRANTY AND SUPPORT

For warranty information or customer support, please refer to the product packaging or visit the official REVLON website. Keep your purchase receipt as proof of purchase for any warranty claims.