

POWMUS T310

POWMUS 10-Inch Android 14 Tablet User Manual

Model: T310

1. INTRODUCTION

This manual provides essential information for the operation and maintenance of your POWMUS 10-inch Android 14 Tablet. Designed for versatility and performance, this tablet features a powerful Octa-Core processor, ample storage, and a vibrant FHD LCD screen, making it suitable for a wide range of activities from productivity to entertainment.



Image: The POWMUS 10-inch Android 14 Tablet shown with its included keyboard and mouse, ready for use.

2. WHAT'S IN THE BOX

Verify that all items are present in the package:

- Android Tablet
- Bluetooth Keyboard
- Wireless Mouse
- Stylus
- USB-C Cable
- OTG Cable
- Tablet Case
- Protective Film
- User Manual (this document)

What's in the Box

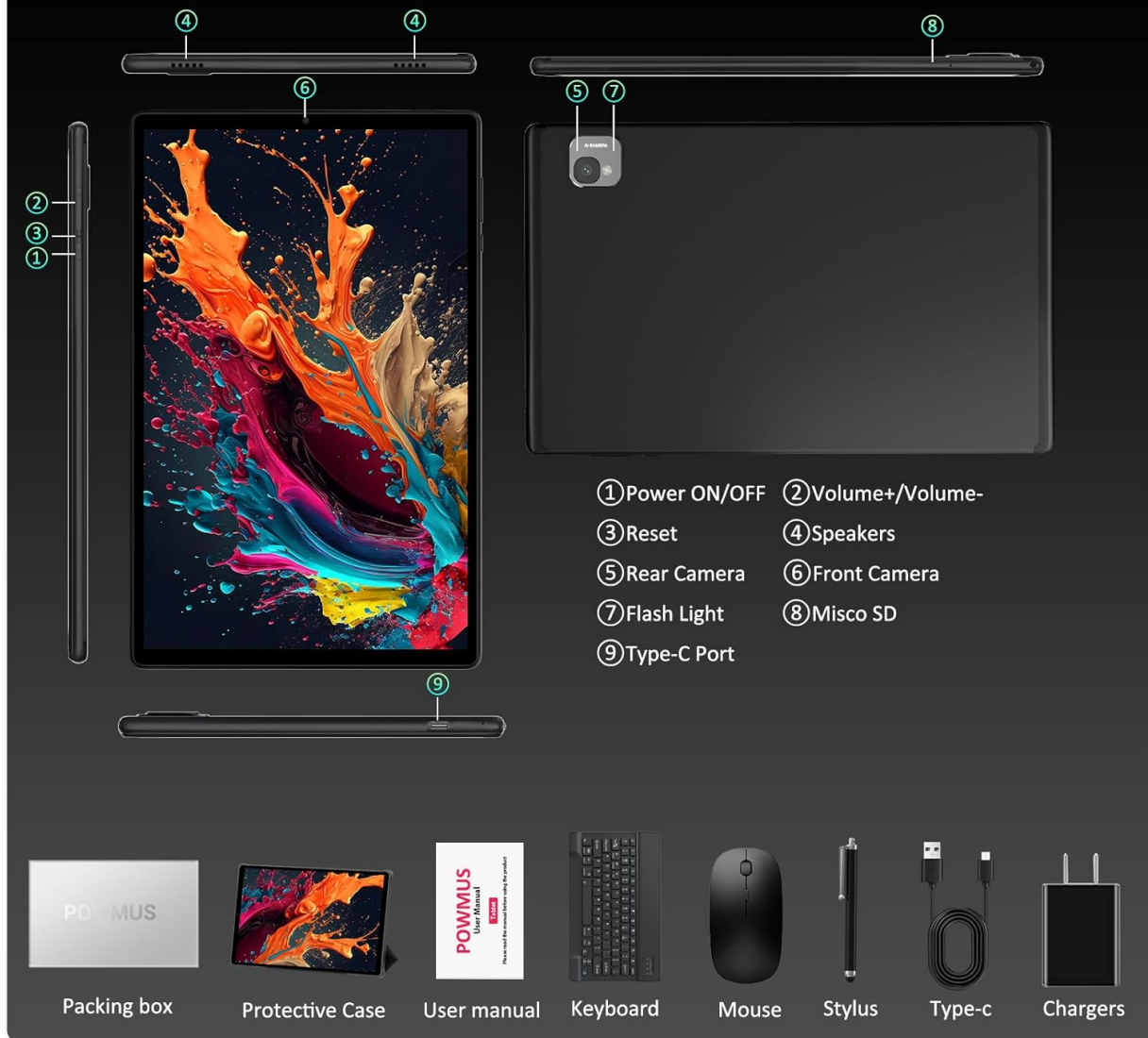


Image: A visual representation of the tablet and all its accompanying accessories as packaged in the box.

3. SETUP

3.1 Initial Charging and Power On

Before first use, fully charge your tablet using the provided USB-C cable and charger. The 8000mAh battery supports 5V3A faster charging.

1. Connect the USB-C cable to the tablet's Type-C Port.
2. Connect the other end of the cable to the power adapter, then plug the adapter into a wall outlet.
3. Once sufficiently charged, press and hold the Power ON/OFF button (usually on the side) for a few seconds until the screen lights up.



Image: The tablet connected to a charger, illustrating its large capacity 8000mAh battery.

3.2 Connecting Accessories (Keyboard and Mouse)

Your tablet comes with a Bluetooth keyboard and a wireless mouse for enhanced productivity.

Connecting the Mouse:

1. Open the back cover of the mouse and take out the USB receiver.
2. Insert two AAA batteries into the mouse (batteries not included).
3. Connect the OTG cable to the USB receiver and plug it into the tablet's Type-C port.

Connecting the Keyboard:

1. Turn on the power switch on the keyboard (usually in the upper right corner).
2. On your tablet, go to Settings > Connected devices > Bluetooth, and turn on Bluetooth.
3. Select the keyboard from the list of available devices to pair.



Image: A visual guide demonstrating the steps to connect the wireless mouse and Bluetooth keyboard to the tablet.

3.3 Expanding Storage

The tablet supports storage expansion up to 1TB via a MicroSD card (not included).

1. Locate the MicroSD card slot on the tablet.
2. Gently insert the MicroSD card into the slot until it clicks into place.
3. The tablet will recognize the new storage, and you can format it if prompted.



Image: Illustration of the tablet's internal storage and its capability to expand up to 1TB with a MicroSD card.

4. OPERATING INSTRUCTIONS

4.1 Android 14 Operating System

Your tablet runs on the latest Android 14 OS, offering enhanced performance and stability. Key features include:

- **Privacy and Security:** Advanced controls for data protection.
- **Taskbar:** Convenient multitasking with quick access to apps.
- **Digital Wellbeing:** Tools to manage screen time and focus.
- **Parental Controls:** Features for family safety and content management.

Android 14 OS System



The tablet runs on the latest Android **14** operating system, offering enhanced performance and stability for a personalized, secure, and convenient user experience. Enjoy a wide range of apps and features right at your fingertips!



Android 14
Made for you



Privacy and security
Authority management



Taskbar
Convenient multitasking



Digital Wellbeing
Parental controls

Ample Storage, Expand Ready

This Android **14** tablet features 36GB of RAM (12GB physical + 24GB virtual) and 128GB of high-speed storage, expandable up to 2TB via a MicroSD card.

36GB(12GB+24GB)RAM

128 GB ROM

Up to 1TB Micro SD



Image: Overview of the Android 14 operating system and its core features on the tablet.

4.2 Display and Visuals

The 10.1-inch FHD LCD screen (1920x1200 resolution) provides clear and sharp visuals. It also features an eye protection mode to reduce strain during prolonged use.

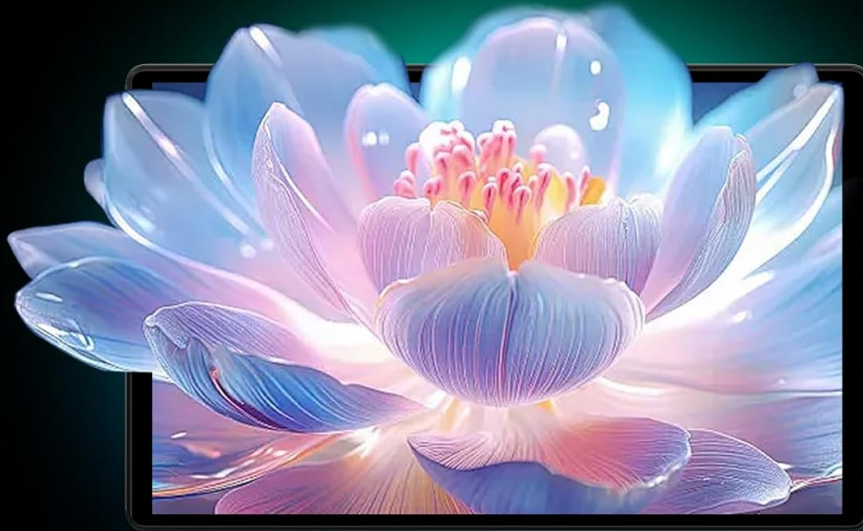
- **Split-Screen Function:** Allows you to run two applications side-by-side for efficient multitasking.
- **Night Light Mode:** Reduces blue light emission for comfortable viewing in low-light conditions.

Ultra-Clear Display

Clear and sharp, enjoy a stunning view

Feast your eyes on the 10.4-inch 2K display. With realistic colors, sharp contrast, and wide viewing angles, every scene comes to life—immersing you fully in the thrilling worlds of games and movies.

 1920*1200  10.1 inch  Eye protection  16:10



You Tube

NETFLIX

prime video

Image: The tablet's ultra-clear display showcasing vibrant colors and sharp resolution.

4.3 Connectivity

The tablet supports dual-band WiFi (5G/2.4G) for seamless internet access and Bluetooth 5.0 for fast and stable wireless connections with peripherals.

- **WiFi:** Connect to available Wi-Fi networks via Settings > Network & internet > Internet.
- **Bluetooth:** Pair with Bluetooth devices like headphones or speakers via Settings > Connected devices > Bluetooth.
- **GPS:** Integrated GPS allows for navigation and location-based services.

8000 mAh Large Capacity Battery



8000mAh



Type-c



5V2A



Image: Visual representation of the tablet's connectivity options, including 5G WiFi and Bluetooth 5.0.

4.4 Camera Features

Equipped with dual cameras (13MP rear and 8MP front), the tablet allows you to capture photos and videos, and engage in video calls.

- **Rear Camera (13MP):** Ideal for capturing high-resolution photos and videos.
- **Front Camera (8MP):** Perfect for selfies and video conferencing.

Enough Storage For All You Need



12GB RAM



24GB Virtual



128GB ROM



1TB Expandable



Image: Examples of photos taken with the tablet's 13MP rear and 8MP front cameras.

4.5 Face Unlock

For convenient and secure access, the tablet supports face unlock. Set up this feature in your tablet's security settings.

5. MAINTENANCE

- **Cleaning:** Use a soft, lint-free cloth to clean the screen and body. Avoid abrasive cleaners.
- **Battery Care:** To prolong battery life, avoid extreme temperatures and do not let the battery fully drain frequently.
- **Software Updates:** Regularly check for and install system updates to ensure optimal performance and security.
- **Storage Management:** Periodically clear unnecessary files and apps to maintain performance.

6. TROUBLESHOOTING

Problem	Solution
Tablet does not power on.	Ensure the tablet is fully charged. If it still doesn't turn on, press and hold the power button for 10-15 seconds to perform a hard reset.
Slow performance.	Close unused applications, clear cache, and ensure sufficient storage space. Consider a factory reset if issues persist (back up data first).
Cannot connect to Wi-Fi.	Check if Wi-Fi is enabled. Restart your router and the tablet. Ensure you are entering the correct password.
Keyboard/Mouse not connecting.	Ensure Bluetooth is on for the keyboard and the mouse's USB receiver is properly connected via OTG. Check batteries in the mouse. Re-pair devices if necessary.

7. SPECIFICATIONS

Feature	Detail
Model Name	BK002 (T310)
Operating System	Android 14
Screen Size	10.1 Inches
Screen Resolution	1920 x 1200 Pixels (FHD LCD)
Processor	Octa-Core (Unisoc T310, up to 2 GHz)
RAM	24GB (12GB physical + 12GB virtual)
Internal Storage	128 GB ROM
Expandable Storage	Up to 1TB (MicroSD)
Rear Camera	13 MP
Front Camera	8 MP
Battery Capacity	8000mAh
Wireless Connectivity	5G/2.4G WiFi, Bluetooth 5.0
GPS	Supported
Item Weight	0.317 ounces
Product Dimensions	9.6 x 5.9 x 0.3 inches

8. PRODUCT VIDEO

Your browser does not support the video tag.

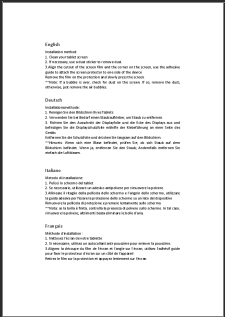
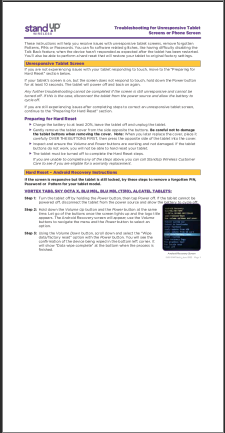

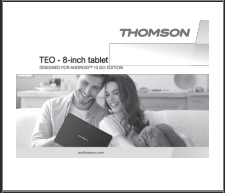
Video: An official product video showcasing the POWMUS Android 14 tablet, its features, and accessories in use. This video highlights the 10.1-inch screen, dual cameras, included keyboard and mouse, and overall performance for various



9. WARRANTY AND SUPPORT

POWMUS offers a 1-year warranty for this product and lifetime customer service. For any assistance, please contact POWMUS customer support.

For further information or support, please visit the official POWMUS store:[POWMUS Store](#)

Related Documents - T310

	<p>How to Install a Tablet Screen Protector: Step-by-Step Guide</p> <p>Concise guide on installing a screen protector on your tablet, covering cleaning, alignment, and bubble removal. Suitable for TOSCIDO, YUMKEM, HEASUR, and other compatible tablets.</p>
	<p>Troubleshooting Unresponsive Tablet Screens and Forgotten Passwords StandUp Wireless</p> <p>This guide from StandUp Wireless provides step-by-step instructions for troubleshooting unresponsive tablet screens and resolving issues like forgotten PINs, Patterns, or Passwords. Learn how to perform a hard reset on various models including Vortex Tab8, Sky Octa X, BLU M8L, NUU Tablet, and Sky Elite T8, and fix software glitches.</p>
	<p>HEADWOLF FPad 1 User Guide: Features, Specifications, and Troubleshooting</p> <p>Comprehensive user guide for the HEADWOLF FPad 1 tablet, covering battery and storage instructions, equipment overview, technical specifications, home screen customization, network setup, software installation, system settings, safety warnings, and troubleshooting tips.</p>
	<p>Thomson TEO - 8-inch Tablet User Manual</p> <p>User manual for the Thomson TEO 8-inch tablet, designed for Android 13 Go Edition. This guide provides safety and regulatory information, device overview, specifications, and troubleshooting tips.</p>

 <p>The image shows the Inrico T310 Dual Band 4G PoC Radio. It is a black, ruggedized mobile phone with a large screen and a physical keypad. The device is shown from both the front and back views. The front view shows the screen displaying a blue interface with some text and icons. The back view shows the camera lens and the Inrico logo.</p>	<p>Inrico T310 Dual Band 4G PoC Radio Instructions</p> <p>Comprehensive instructions and specifications for the Inrico T310 Dual Band 4G PoC Radio. This user manual covers setup, operation, battery usage, network connectivity, application management, troubleshooting, and FCC compliance for the Inrico T310 push-to-talk device.</p>
 <p>The image shows the realme Buds T310 User Guide. It is a document with a white background and black text. The title 'realme Buds T310 User Guide' is prominently displayed at the top. Below the title, there are several sections of text, including 'Pairing', 'Controls', and 'Specifications'. The text is organized into a structured format with headings and sub-headings.</p>	<p>realme Buds T310 User Guide: Pairing, Controls, and Specifications</p> <p>Comprehensive user guide for the realme Buds T310 wireless earbuds, covering pairing, touch controls, realme Link app features, technical specifications, and packing details. Includes multilingual instructions.</p>