

Manuals+

[Q & A](#) | [Deep Search](#) | [Upload](#)

manuals.plus /

- › [Spedal](#) /
- › [MINIEYE C2M 4K Dash Cam User Manual](#)

Spedal C2M

MINIEYE C2M 4K Dash Cam User Manual

MODEL: C2M

Brand: Spedal

1. Introduction and Overview

The Spedal MINIEYE C2M is an advanced 4K front and 1080P rear dual dash camera system designed to enhance driving safety and provide comprehensive recording capabilities. It features an Advanced Driver Assistance System (ADAS) for real-time alerts, built-in 5G Wi-Fi and GPS for seamless connectivity, and a 2.4-inch LCD for immediate feedback. This manual provides essential information for setting up, operating, and maintaining your device.

2. Package Contents

Please verify that all items listed below are included in your package:

- MINIEYE C2M Main Unit (2.4" Monitor, Collision Device)
- Rear Camera
- Car Charger
- Crowbar (for cable routing)
- User Manual (this document)
- Pre-installed 64GB MicroSD Card

3. Product Features

3.1. Excellent 4K Ultra HD Dual Camera

The MINIEYE C2M is equipped with an ultra 4K front camera and a 1080P rear camera, offering a 150° wide-angle view to capture comprehensive details without blind spots. The front camera features an F1.75 large

aperture and a 7-glass lens for clear recording even in low-light conditions.

Built-in 5GHz Wi-Fi & GPS - APP Control

Allows you to connect your iOS or Android smartphone to MINIEYE C2M via the free APP



Easily Download



OTA Update



APP Control



GPS Location

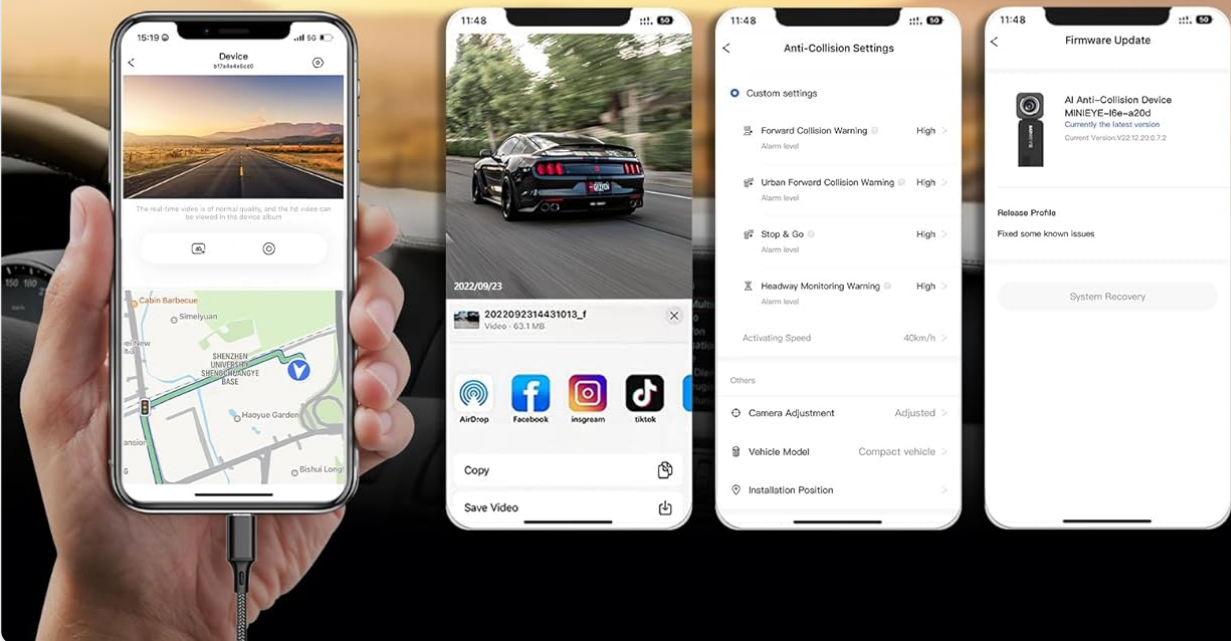


Image: Illustration of the dual camera system with 4K front and 1080P rear views.

3.2. ADAS AI Collision Avoidance Technology

The C2M ADAS dash cam provides Advanced Driver Assistance System features, detecting surroundings and offering real-time voice alerts to warn of potential safety issues. This system helps drivers avoid accidents by providing alerts such as Forward Collision Warning, Pedestrian Collision Warning, Lane Departure Warning, and Headway Monitoring Warning.

Advanced Driver Assistance System

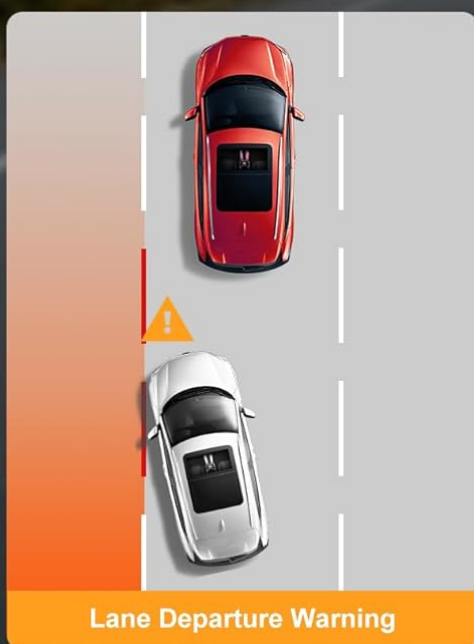
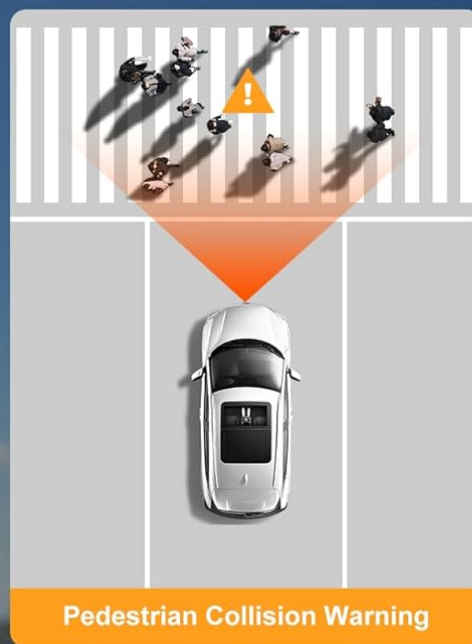
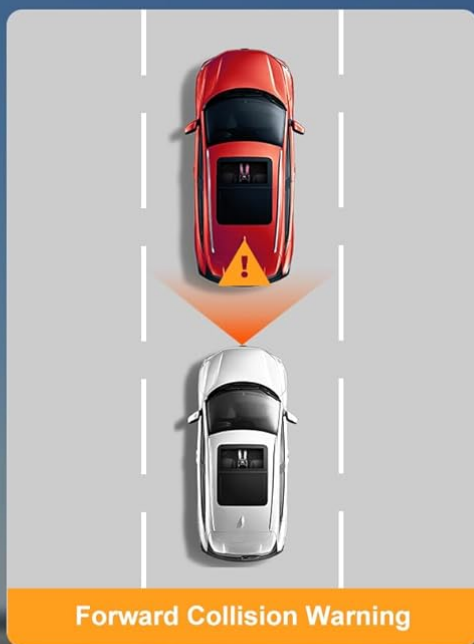


Image: Visual representation of various ADAS alerts including Forward Collision Warning and Lane Departure Warning.

Video: Demonstrates the MINIEYE AC1-Professional ADAS Dash Cam features, including collision avoidance and lane departure warnings.

Video: Overview of the AI Collision Avoidance Device, highlighting its ability to detect and warn about potential hazards.

Video: Detailed explanation of MINIEYE AC1 Collision Avoidance Features and ADAS functionalities.

3.3. 3D Traffic Display & Real-time Footage

The 2.4-inch display can switch between showing 3D road conditions and real-time footage. It uses an elaborate algorithm to provide visual and aural warnings based on vehicle distance and movement.

Super Night Vision



SONY
Starvis Sensor



HDR



F1.75
Aperture



150°
Wide Angle

Front 4K



Rear 1080P

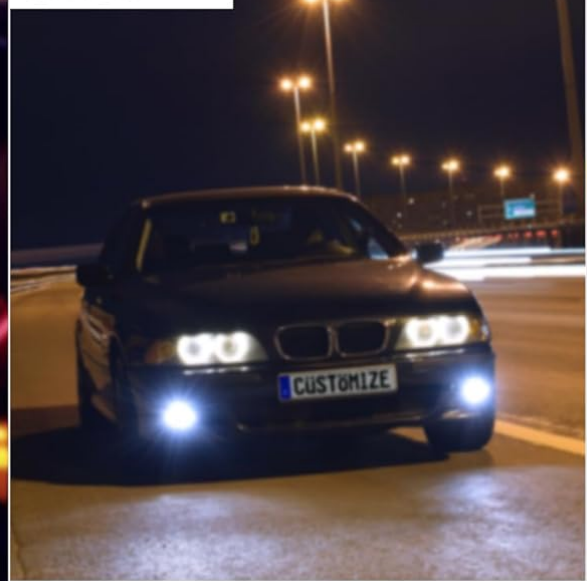


Image: Views of the 2.4-inch LCD display showing 3D traffic conditions and real-time footage.

3.4. 5G Wi-Fi/Mobile APP & Built-In GPS

The MINIEYE APP supports both iOS and Android systems, allowing you to view and quickly download footage via Wi-Fi. It also supports OTA updates and enables control over settings like video resolution, volume, and anti-collision functions. Built-in GPS records vehicle location and speed.

Front and Rear 24H Parking Monitoring

*C2M Hardwire kit(not included in the package)
is needed for the parking modes



Auto
Event Detection



Collision
Detection



Time-lapse



Low Voltage
Protection



Image: Features of the built-in 5GHz Wi-Fi and GPS, including easy download, OTA updates, app control, and GPS location.

3.5. 24-hour Parking Mode

When combined with the parking monitor function, the dash cam continuously monitors your car while parked. You will receive notifications in the MINIEYE app if an event occurs. Note: The MINIEYE Hardwire Kit (ASIN: B0CJXRZQZ9) is required for parking modes and is sold separately.

**DUAL ULTRA
HD CAMERA**

4K+1080P

150° 140°



Front Camera

4K | 150°



Rear Camera

1080P | 140°

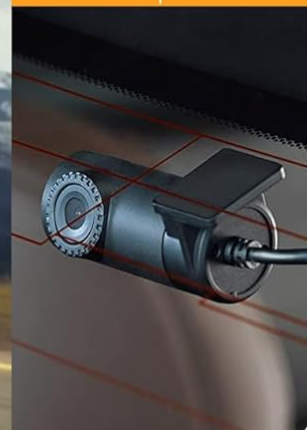


Image: Features of 24-hour parking monitoring, including auto event detection, collision detection, time-lapse, and low voltage protection.

3.6. Super Night Vision

Equipped with a SONY Starvis Sensor and F1.75 aperture, the dash cam provides clear recordings in low-light conditions, ensuring important details are captured even at night.

2.4-inch LCD Display

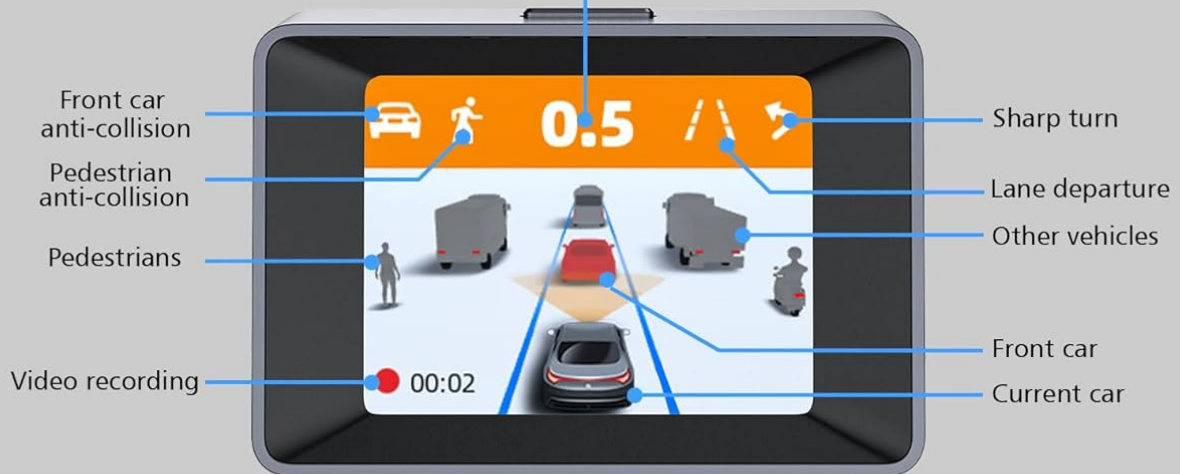
3D Traffic Condition



Real-time Traffic



Safe distance index

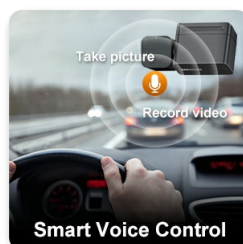


* The monitor only supports displaying real-time footage from the front camera

Image: Examples of clear night vision footage from both front 4K and rear 1080P cameras.

3.7. Loop Recording & Smart Voice Control

The device supports continuous loop recording, automatically overwriting the oldest footage when the memory card is full. Smart voice control allows for hands-free operation, such as starting/stopping recording or taking photos.



Smart Voice Control



Loop Recording

4. Setup Guide

4.1. Mounting the Dash Cam

1. Clean the windshield area where the dash cam will be mounted.
2. Peel off the protective film from the adhesive mount on the main unit.
3. Firmly press the main unit onto the desired location on your windshield, ensuring it does not obstruct your view.
4. Mount the rear camera on your rear windshield using its adhesive mount.

4.2. Connecting the Cameras and Power

1. Connect the rear camera cable to the main unit. Use the provided crowbar tool to tuck the cables neatly along the car's trim for a clean installation.
2. Connect the main unit to the car charger using the provided USB-C power cable.
3. Plug the car charger into your vehicle's cigarette lighter socket.
4. The dash cam will power on automatically when the vehicle starts.

4.3. Initial App Setup and Connection

The MINIEYE C2M connects to your smartphone via Wi-Fi for viewing footage, changing settings, and performing OTA updates. While the manual may suggest a specific app, some users have found that the **MINIEYE "utour go" app** works more reliably for Android devices. Please search for and install this app from your device's app store.

1. Download and install the **MINIEYE "utour go" app** on your smartphone.
2. Turn on the dash cam.
3. On your smartphone, go to Wi-Fi settings and connect to the dash cam's Wi-Fi network (usually named "MINIEYE_XXXX"). The default password is typically "12345678".
4. Open the MINIEYE app and follow the on-screen instructions to pair your device.
5. Once connected, you can adjust camera angles and settings through the app.

5. Operating Instructions

5.1. Basic Recording

The dash cam automatically begins recording when powered on. Footage is saved to the pre-installed MicroSD card in a loop recording format.

5.2. ADAS Alerts

The ADAS system provides real-time voice and visual alerts on the 2.4-inch LCD. Pay attention to these warnings to enhance driving safety. Sensitivity settings for these alerts can be adjusted via the mobile app.

5.3. Using the Mobile App

The MINIEYE app allows you to:

- View live footage from both cameras.
- Download recorded videos and photos to your phone.
- Adjust various settings, including video resolution, audio recording, and ADAS sensitivity.
- Perform Over-The-Air (OTA) firmware updates.

5.4. Parking Monitoring

To activate 24-hour parking monitoring, ensure the optional MINIEYE Hardwire Kit is installed. Once installed, the dash cam will automatically switch to parking mode when the vehicle is turned off, detecting events and providing notifications.

6. Maintenance

6.1. Cleaning

Regularly clean the camera lenses and the 2.4-inch LCD screen with a soft, lint-free cloth to ensure clear footage and optimal display visibility. Avoid using abrasive cleaners.

6.2. Firmware Updates

Keep your dash cam's firmware updated via the MINIEYE app's OTA update feature. Firmware updates often include performance improvements, bug fixes, and new features.

6.3. MicroSD Card Management

Periodically format the MicroSD card (e.g., once a month) through the dash cam's settings or the app to maintain optimal recording performance and prevent data corruption. Replace the MicroSD card if you notice any recording errors or degradation in performance.

7. Troubleshooting

7.1. App Connectivity Issues

If you experience difficulty connecting to the app, especially on Android devices, ensure you are using the **MINIEYE "utour go" app**. Some older manuals may direct to an outdated or incorrect application. Verify your phone's Wi-Fi is connected to the dash cam's network.

7.2. ADAS False Alarms or Inaccuracy

ADAS alerts can sometimes trigger false alarms due to environmental factors (e.g., bad weather, dirty windshield, complex traffic). Adjust the sensitivity settings for each ADAS alert (Forward Collision Warning, Lane Departure Warning, etc.) within the MINIEYE app to suit your driving style and conditions.

7.3. Poor Night Vision Performance

Ensure the front and rear camera lenses are clean and free from smudges or dirt. While the dash cam has Super Night Vision, extreme darkness or glare from other vehicles can still affect clarity. Ensure your windshield is clean.

7.4. Dash Cam Not Powering On

Check the car charger connection to both the dash cam and the vehicle's cigarette lighter socket. Ensure the vehicle's power outlet is functioning correctly. If the issue persists, try a different power source or cable.

7.5. Recording Issues (e.g., footage missing, corrupted)

Format the MicroSD card. If the problem continues, the MicroSD card may be faulty and require replacement. Ensure the card is a high-speed (Class 10 or higher) card.

8. Specifications

Feature	Detail
Product Dimensions	4.3 x 2 x 1.3 inches
Item Weight	2.44 pounds
Model Name	MINIEYE G2M
Video Capture Resolution	4K (Front), 1080p (Rear)
Connectivity Technology	5G Wi-Fi, GPS
Display	2.4" LCD
Special Features	Loop Recording, Built-In WiFi, Night Vision, Voice Alert, App Control, ADAS
Mounting Type	Windshield Mount
Manufacturer	Shenzhen Youjia Innov Tech Co., Ltd
Date First Available	October 8, 2022

9. Warranty and Support

For detailed warranty information, please refer to the official documentation provided by Spedal or contact their customer support directly. A comprehensive User Manual in PDF format is available for download at:

<https://manuals.plus/m/b67e14d79a97a26f45e17f677d824219cf582f28c3f470a3bce2d57c468db11a>

For further assistance or technical support, please visit the Spedal official website or contact their customer service.

