

Manuals+

[Q & A](#) | [Deep Search](#) | [Upload](#)

[manuals.plus](#) /

› [SABLUTE](#) /

› [SABLUTE Large Print Backlit Keyboard Instruction Manual](#)

SABLUTE H1

SABLUTE Large Print Backlit Keyboard Instruction Manual

Model: H1

INTRODUCTION

Thank you for choosing the SABLUTE Large Print Backlit Keyboard. This wired USB computer keyboard is designed with oversized, easy-to-read letters and features a 7-color adjustable backlight, an integrated wrist rest, and a convenient phone holder. It is ideal for users seeking enhanced visibility and comfort, including seniors, students, and office workers. This manual provides detailed instructions for setup, operation, maintenance, and troubleshooting to ensure optimal performance and longevity of your keyboard.



Image: The SABLUTE Large Print Backlit Keyboard in black, featuring large, illuminated keys and a built-in slot holding a tablet, demonstrating its design and functionality.

SAFETY INFORMATION

- Do not expose the keyboard to liquids or excessive moisture.
- Avoid extreme temperatures. Operate and store the keyboard in a moderate environment.
- Do not attempt to disassemble or repair the keyboard yourself. Refer all servicing to qualified personnel.
- Keep the keyboard away from strong magnetic fields.
- Use only with compatible USB ports.

PACKAGE CONTENTS

Please check the package for the following items:

- SABLUTE Large Print Backlit Keyboard (Model: H1)
- Integrated USB Cable
- User Manual (this document)

SETUP

1. **Unpacking:** Carefully remove the keyboard from its packaging.
2. **Connection:** Locate an available USB-A port on your computer (desktop, laptop, PC, or Windows device). Insert the USB cable from the keyboard into the USB port.

The keyboard is plug-and-play, meaning no additional drivers are required for most operating systems (Windows, Mac). Your computer should automatically recognize the device.
3. **Placement:** Place the keyboard on a stable, flat surface. The integrated wrist rest is designed to provide ergonomic support during use.
4. **Phone/Tablet Holder:** The integrated slot at the top of the keyboard can be used to hold your smartphone or tablet for convenient viewing during use. Note that this holder does not provide charging functionality.



Image: A user typing on the SABLUTE keyboard with a smartphone placed vertically in the integrated holder, highlighting the convenience of the phone/tablet slot.

OPERATING INSTRUCTIONS

Basic Typing

The keyboard functions as a standard QWERTY keyboard. The large print keys are designed to reduce typing errors and eye strain.



Image: Close-up view of the SABLUTE keyboard highlighting the extra-large characters on the keys, designed for easy visibility and reduced typing errors.

Backlight Control

The keyboard features a 7-color adjustable backlight with multiple modes. This allows for comfortable typing in various lighting conditions, reducing eye fatigue.



Image: A collage showing the SABLUTE keyboard illuminated in seven different colors, demonstrating the customizable backlight feature.

- **Adjusting Brightness:** Press **Fn + Page Up** to increase brightness, and **Fn + Page Down** to decrease brightness. There are 7 levels of brightness.



Image: Diagram illustrating how to adjust the backlight brightness using the Fn + Page Up/Page Down keys, showing increasing light bars.

- **Toggling Backlight Color:** Press **Fn + 1** (the key with the lightbulb icon) to cycle through the 7 available backlight colors.



Image: Diagram showing the keyboard with a purple backlight and the instruction "Fn + 1 Toggle the Backlight Color", indicating the key combination for changing colors.

- **Keeping One Backlight Color:** Press **Fn + 2** to set the backlight to a single, static color.



Image: Diagram showing the keyboard with a blue backlight and the instruction "Fn + 2 Keep One Backlight Color", indicating the key

combination for a static color mode.

- **Backlighting While Typing:** Press **Fn + 3** to activate a mode where keys light up as you type.



Image: Diagram showing the keyboard with keys lighting up in various colors as if being typed on, with the instruction "Fn + 3 Backlighting While Typing".

- **Backlight Color Change (Breathing Mode):** Press **Fn + 4** to enable a mode where the backlight colors smoothly transition back and forth.



Image: Diagram showing the keyboard with a yellow backlight and the instruction "Fn + 4 Backlight Color Changes Back and Forth", indicating a dynamic color mode.

Ergonomic Design and Wrist Rest

The keyboard is designed with an ergonomic layout and an integrated palm rest to reduce wrist fatigue and discomfort during prolonged use. This helps maintain a natural hand position.

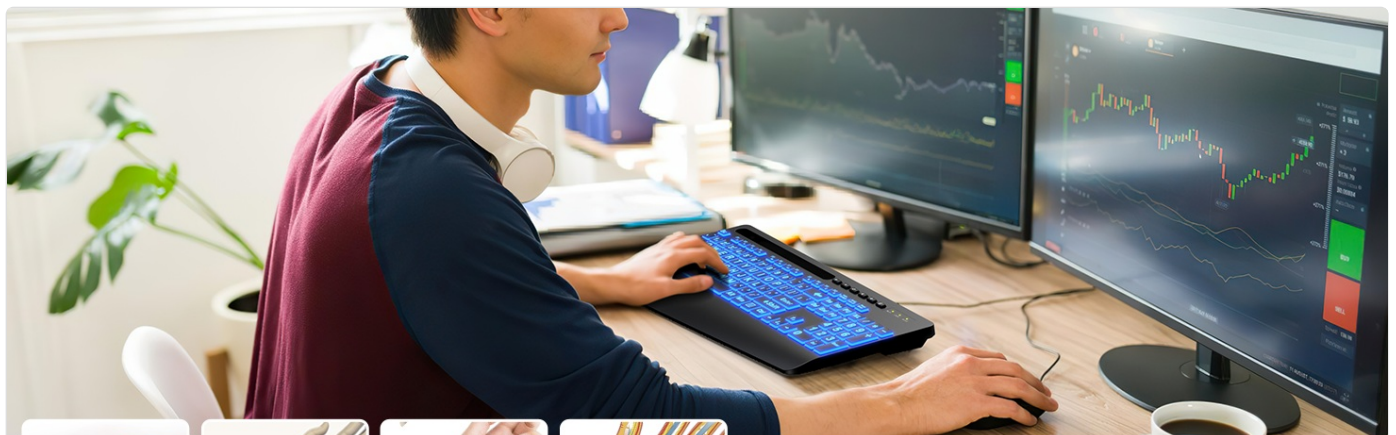
ERGONOMIC DESIGN

RELIEVE WRIST PAIN

Keep Hand Level with Keyboard



Image: A person's hands positioned comfortably on the SABLUTE keyboard, illustrating the ergonomic design and wrist rest that helps keep hands level.



ERGONOMIC WRIST REST

Effectively relieve the pressure, fatigue and pain of your wrist

Image: A banner image illustrating the ergonomic wrist rest, showing anatomical diagrams of the wrist and stating that it effectively relieves pressure, fatigue, and pain.

Quiet Keystrokes

The keyboard is engineered with a shorter keystroke distance, which effectively reduces typing noise, making it suitable for quiet environments.



Image: A close-up diagram of a keyboard key, with an arrow pointing down, indicating that shorter keystroke distance effectively reduces noise.

Official Product Videos

Large Print Backlit Keyboard with Wrist Rest Wired Keyboard

Your browser does not support the video tag.

Video: An overview of the SABLUTE Large Print Backlit Keyboard, showcasing its large print keys, integrated wrist rest, and wired connectivity. This video highlights the key features and benefits for users seeking an accessible and comfortable typing experience.

Large Print Backlit Keyboard Wired Computer Keyboards

Your browser does not support the video tag.

Video: A detailed demonstration of the SABLUTE Large Print Backlit Keyboard, focusing on its large, easy-to-read characters and the benefits of its wired connection for stable and delay-free typing. The video also showcases the various backlight options.

Wired USB Lighted Large Print Backlit Computer Keyboards

Your browser does not support the video tag.

Video: This video provides a comprehensive look at the SABLUTE Wired USB Lighted Large Print Backlit Keyboard, emphasizing its illuminated keys for low-light environments and its plug-and-play USB connectivity. It demonstrates the keyboard's suitability for various users, including those with visual impairments.

MAINTENANCE

- **Cleaning:** To clean the keyboard, disconnect it from your computer. Use a soft, lint-free cloth slightly dampened with water or a mild cleaning solution. Avoid harsh chemicals or abrasive materials. For dust and debris between keys, use compressed air.
- **Storage:** When not in use for extended periods, store the keyboard in a dry, cool place, away from direct sunlight and extreme temperatures.
- **Cable Care:** Do not bend or crimp the USB cable excessively. Always pull from the plug, not the cable, when disconnecting.

TROUBLESHOOTING

Problem	Possible Cause	Solution
Keyboard not responding	Loose USB connection; Faulty USB port; Driver issue.	Ensure the USB cable is securely plugged into the computer. Try a different USB port. Restart your computer.
Backlight not working	Backlight turned off; Brightness set to minimum.	Press Fn + Page Up to increase brightness. Cycle through backlight modes using Fn + 1 .
Keys are sticky or unresponsive	Debris under keys; Excessive wear.	Clean the keyboard with compressed air. If the issue persists, contact customer support.
Phone/Tablet holder not fitting device	Device too thick with case.	The holder is designed for standard phone/tablet thickness. Remove bulky cases if necessary.

SPECIFICATIONS

- **Model:** H1
- **Connectivity:** Wired USB-A
- **Dimensions:** 17 x 8.5 x 1.25 inches
- **Item Weight:** 1.43 pounds
- **Number of Keys:** 78 (Full-size with numeric keypad)
- **Backlight:** 7-Color RGB, adjustable brightness and modes
- **Special Features:** Large Print Keys, Integrated Wrist Rest, Phone/Tablet Holder
- **Compatible Devices:** Laptop, PC, Windows, Mac
- **Manufacturer:** SABLUTE
- **Country of Origin:** China
- **Carbon Footprint:** 23.8 kg CO2e (Plastic parts include recycled plastic)

WARRANTY AND SUPPORT

SABLUTE provides comprehensive support for its products:

- **Manufacturer Warranty:** 360 Days Manufacturer Warranty.
- **Replacement Policy:** 90 Days Replacement.
- **Customer Service:** 24 Hours Reply for inquiries.
- **Contact Number (US):** 1-213-296-1273 (Mon-Fri 9am-1pm, 2pm-6pm PST).
- For further assistance, please visit the official SABLUTE store on Amazon or contact their customer service directly.



Image: An infographic detailing SABLUTE's customer support, including 24-hour reply, 90-day replacement, 360-day manufacturer warranty, and contact phone number.

Related Documents - H1

	<p>Sablute Tri-Mode Backlit Mechanical Keyboard User Manual</p> <p>Comprehensive user manual for the Sablute Tri-Mode Backlit Mechanical Keyboard, covering setup, connectivity options (Bluetooth, 2.4G, wired), backlighting features, multimedia controls, and troubleshooting. Includes product specifications and safety warnings.</p>
	<p>Sablute V890 Wireless Mouse User Manual</p> <p>User manual for the Sablute V890 Wireless Mouse, including setup instructions, FAQ, troubleshooting, and product specifications.</p>
	<p>Sablute CK23 Wireless Keyboard and Mouse Combo User Manual</p> <p>Comprehensive user manual for the Sablute CK23 wireless keyboard and mouse combo, including setup instructions, frequently asked questions, product specifications, and FCC compliance information.</p>
	<p>Sablute Wireless Keyboard Combo User Manual</p> <p>Comprehensive user manual for the Sablute Wireless Keyboard Combo (MA31), covering setup, functions, troubleshooting, and FCC compliance.</p>
	<p>Sablute KM41 Pro Wireless Keyboard Combo User Manual</p> <p>User manual for the Sablute KM41 Pro 2.4GHz wireless keyboard and mouse combo. Includes setup instructions, shortcut key functions, LED indicator explanations, troubleshooting tips, and technical specifications.</p>
	<p>Sablute Wireless Keyboard Combo User Manual</p> <p>User manual for the Sablute Wireless Keyboard Combo (MA31), including setup instructions, function descriptions, troubleshooting tips, and FCC compliance information.</p>

