

Generic 57230 19116C-B

Instruction Manual: Replacement Wand for Bauer Cordless Chemical Sprayer

Brand: Generic | **Model:** 57230 19116C-B

PRODUCT OVERVIEW

This document provides instructions for the installation, operation, and maintenance of the extendable replacement wand designed for the Bauer 3.5 L Cordless Chemical Sprayer (Harbor Freight Item 57230). This wand is an OEM replacement part, specifically identified as Part No. 1 in the original sprayer's diagram.

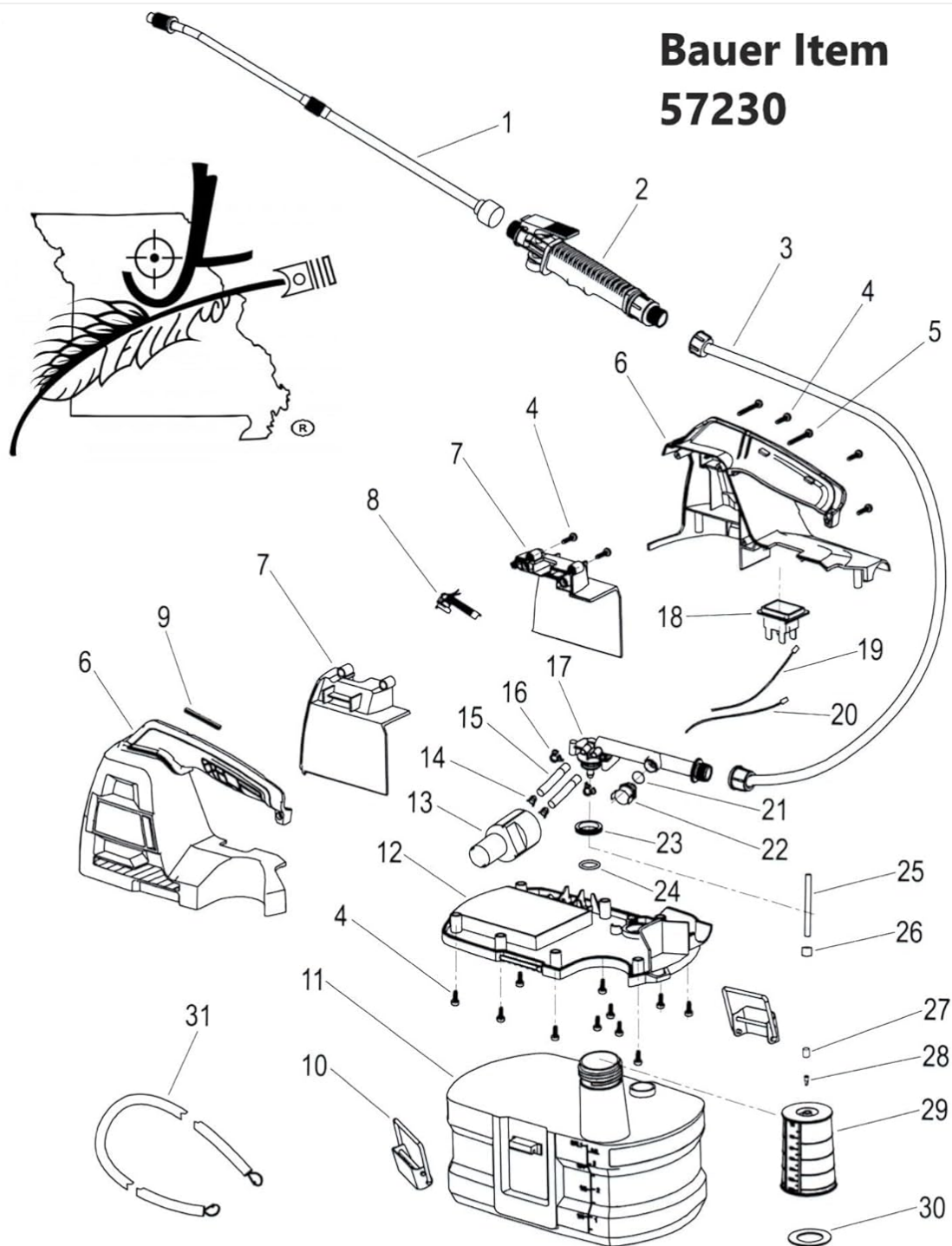
The wand features durable brass fittings and is adjustable in length, allowing for versatile application. It is designed to provide an adjustable flow for various spraying needs.



Image 1: The adjustable replacement wand with brass fittings. This image shows the full length of the wand with its brass components.

SETUP AND INSTALLATION

This replacement wand is designed to be easily installed into your existing Bauer 3.5 L Cordless Chemical Sprayer (Item 57230). Refer to the sprayer's original manual or the provided diagram for precise component identification.



Bauer Item 57230

Image 2: Exploded diagram of the Bauer 3.5 L Cordless Chemical Sprayer (Item 57230). The replacement wand is identified as Part No. 1 in this diagram.

1. **Preparation:** Ensure the chemical sprayer is empty, depressurized, and disconnected from any power source before beginning installation.
2. **Remove Old Wand:** Carefully unscrew or detach the existing wand from the sprayer's handle assembly. Note the orientation and any seals or washers.
3. **Install New Wand:** Align the threaded end of the new replacement wand with the connection point on the sprayer handle. Screw it in firmly by hand. Ensure a snug fit to prevent leaks. Do not overtighten.
4. **Check Connections:** Verify that all connections are secure. If applicable, ensure any O-rings or seals are properly seated.

OPERATING INSTRUCTIONS

The replacement wand offers adjustable length and spray pattern for optimal use.

- **Adjusting Wand Length:** The wand can be extended from 12 inches (30.5 cm) to 20 inches (50.8 cm). To adjust, loosen the locking collar located on the wand, slide the inner tube to the desired length, and then tighten the collar firmly to secure it.
- **Adjusting Spray Pattern:** The brass nozzle tip allows for adjustment of the spray pattern. Rotate the nozzle tip clockwise for a finer mist or jet stream, and counter-clockwise for a wider, coarser spray. Test the spray pattern in a safe area before applying chemicals.
- **Operation with Sprayer:** Once installed and adjusted, operate the wand as per the instructions for your Bauer 3.5 L Cordless Chemical Sprayer. Ensure the sprayer is properly filled and pressurized before use.



Image 3: A closer view of the adjustable nozzle and brass fittings, highlighting the mechanism for spray pattern adjustment.

MAINTENANCE

Proper maintenance will extend the life of your replacement wand and ensure optimal performance.

- **Cleaning After Use:** After each use, flush the wand with clean water to remove any chemical residues. This prevents clogging and corrosion, especially with the brass fittings.
- **Nozzle Cleaning:** If the nozzle becomes clogged, carefully unscrew it and rinse thoroughly. A small brush or needle can be used to clear stubborn blockages, but avoid damaging the orifice.
- **Inspection:** Periodically inspect the wand for any signs of wear, damage, or leaks, particularly around the brass fittings and adjustable sections.

- **Storage:** Store the wand in a clean, dry place, away from extreme temperatures and direct sunlight.

TROUBLESHOOTING

If you encounter issues with your replacement wand, consider the following common solutions:

Problem	Possible Cause	Solution
No spray or weak spray	Clogged nozzle or wand tube. Insufficient pressure from sprayer.	Clean the nozzle and flush the wand. Ensure the sprayer is properly pressurized according to its manual.
Leaking from connections	Loose connections. Damaged O-rings or seals.	Tighten all connections. Inspect and replace any worn or damaged O-rings/seals.
Wand does not extend/retract smoothly	Dirt or debris in the telescoping mechanism. Locking collar overtightened or loose.	Clean the inner and outer tubes. Ensure the locking collar is properly loosened before adjusting and tightened after.

SPECIFICATIONS

Feature	Detail
Product Type	Replacement Wand for Chemical Sprayer
Compatibility	Bauer 3.5 L Cordless Chemical Sprayer (Harbor Freight Item 57230)
Part Number	OEM Part No. 1 (Model: 57230 19116C-B)
Adjustable Length	12 inches (30.5 cm) to 20 inches (50.8 cm)
Material	Brass fittings, Stainless Steel tube
Color	Brass/Silver
Weight	Approximately 104 grams (0.23 lbs)
Features	Adjustable flow tip, Brass fittings

WARRANTY AND SUPPORT

For warranty information or technical support regarding this replacement part, please refer to the original manufacturer's documentation for the Bauer 3.5 L Cordless Chemical Sprayer (Harbor Freight Item 57230) or contact the retailer where the replacement part was purchased. Specific warranty terms for replacement parts may vary.

For general inquiries or assistance, please consult the official website of Harbor Freight Tools or Bauer for their customer service contact details.

