



[Manuals.plus](#) /

> [JUOPZKENN](#) /

> Thermal Imager Infrared Camera User Manual

JUOPZKENN B0CDCMR65V

Thermal Imager Infrared Camera User Manual

Brand: JUOPZKENN | Model: B0CDCMR65V

1. PRODUCT OVERVIEW

The JUOPZKENN Thermal Imager Infrared Camera is a compact and portable device designed for various inspection tasks, including home inspections. It features a 2.8-inch LCD screen that displays and tracks temperature readings, and it is powered by a built-in lithium-ion battery.

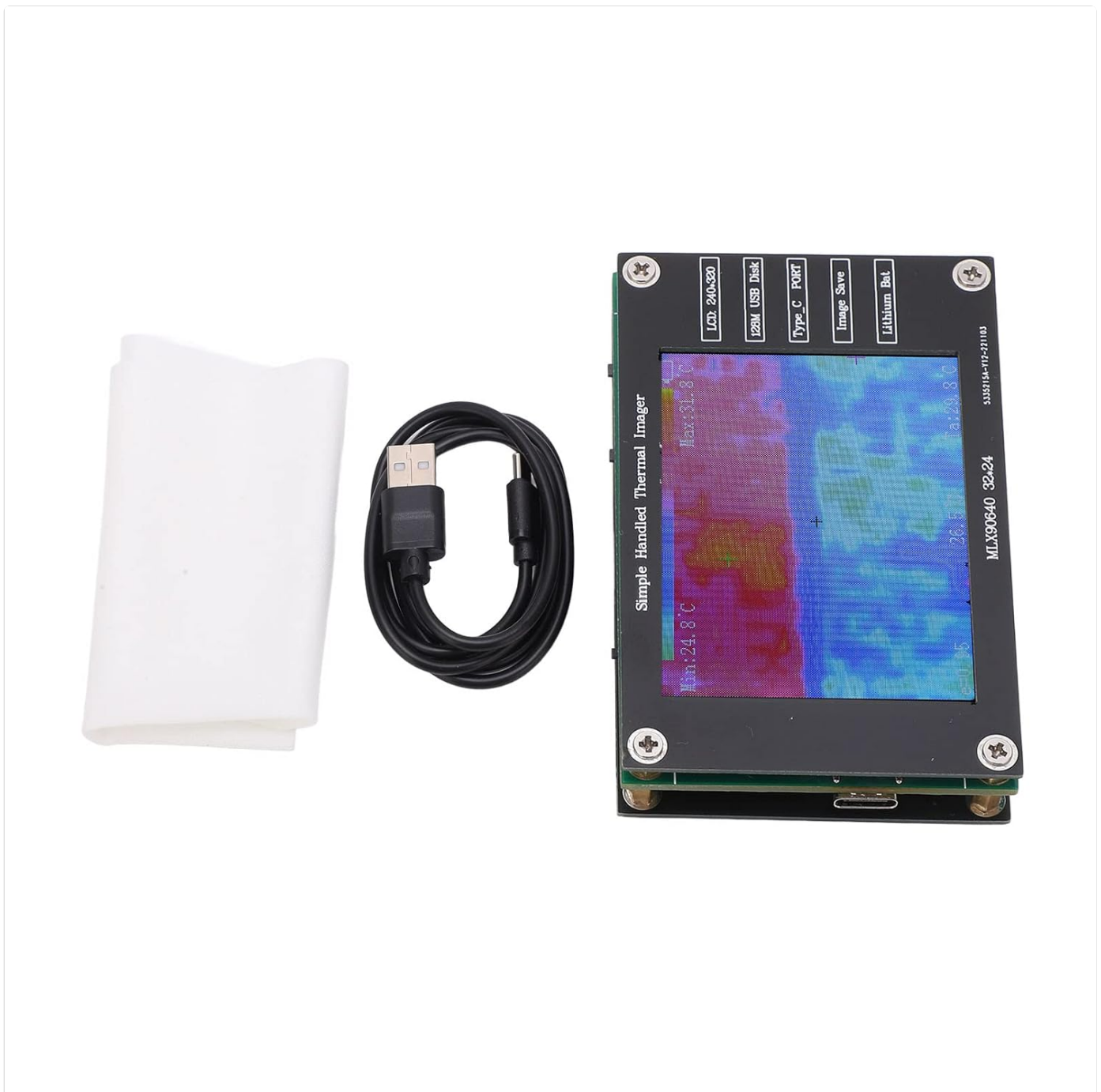


Image 1.1: The JUOPZKENN Thermal Imager Infrared Camera, showcasing its compact design and integrated screen.

Key features include:

- **Compact and Portable:** Measuring range from -40°C to $+300^{\circ}\text{C}$ with an 8Hz dynamic refresh rate. Small size, easy to carry, integrated design, requiring no external equipment.
- **Temperature Display:** A 2.8-inch screen with 320x240 resolution displays and tracks the highest, lowest, and center temperatures.
- **Durable Construction:** The case utilizes FR4 sheet material for enhanced protection of internal components, ensuring a long service life.
- **Efficient Charging:** Powered by a lithium-ion battery, with USB-C charging capability, offering up to 4 hours of battery life. The device can be used while charging.
- **Built-in Storage:** Equipped with a built-in SPI Flash chip capable of storing up to 100 pictures. Image files can be viewed and copied by connecting the device to a computer or mobile phone via a data cable.



Image 1.2: Examples of the thermal imager's applications, including automotive, industrial, and building inspections.

2. SAFETY INSTRUCTIONS

Please read and understand the following safety instructions before using the device to ensure safe and proper operation.



1 Warning

Do not immerse in water!

2 Warnung

Nicht in wasser tauchen!

3 Avertissement

Ne pas immerger dans l'eau!

4 Advertencia

¡No sumergir en agua!

5 Attenzione

Non immergere in acqua!

6 Waarschuwing

Niet onderdompelen in water!

7 Varning

Sänk inte ner i vatten!

8 Ostrzeżenie

Nie zanurzać w wodzie!

9 Uyarı

Suya batırmayın!

Image 2.1: A warning symbol indicating that the device should not be immersed in water.

- **Do Not Immerse in Water:** This device is not waterproof. Immersion in water or other liquids will cause damage and void the warranty.
- **Operating Environment:** Use the device within the specified operating temperature range of 0°C to 50°C and working humidity of $\leq 70\%$.
- **Handle with Care:** Avoid dropping the device or subjecting it to strong impacts, which can damage internal components.
- **Charging Safety:** Use only the provided USB-C cable and a compatible 5V 1A power source for charging. Do not attempt to charge with damaged cables or chargers.

3. SETUP AND CHARGING

The thermal imager is designed for ease of use with minimal setup required.

3.1 Package Contents

Before first use, please verify that all items are present in the package:

- 1 x Thermal Imager
- 1 x Wiping Cloth
- 1 x USB Cable



Lithium ion battery powered, USB C charging
Up to 4 hours of battery life
Built in SPI Flash chip, can store 100 pictures
Connect computer or mobile phone to view and copy image file



Image 3.1: The thermal imager, wiping cloth, and USB cable included in the package.

3.2 Initial Setup

The device is ready for use directly upon boot-up. No complex installation or calibration is typically required for initial operation.

3.3 Charging the Device

The thermal imager is powered by a built-in 3.7V 600mAh lithium-ion battery. To charge the device:

1. Locate the USB Type-C port on the side of the device.

2. Connect the provided USB cable to the device's USB-C port.
3. Connect the other end of the USB cable to a 5V 1A USB power adapter (not included) or a computer's USB port.

A full charge provides approximately 4 hours of working time. The device can be used while it is charging.



Image 3.2: Close-up view of the thermal imager, highlighting the USB-C charging port.

4. OPERATING INSTRUCTIONS

This section details how to operate your thermal imager for effective temperature measurement and image capture.

4.1 Powering On/Off

The device is designed for direct boot-up. Press and hold the power button (if present, typically indicated by a power symbol) to turn the device on or off.



Image 4.1: Rear view of the thermal imager, showing the location of the power button and other indicators.

4.2 Understanding the Display

The 2.8-inch LCD screen (320x240 pixels) displays the thermal image and key temperature information. It tracks and shows the highest, lowest, and center temperatures within the field of view.



Image 4.2: The thermal imager's screen showing a thermal representation of a human hand, with temperature readings.



Image 4.3: An angled view of the thermal imager, demonstrating the clarity of the thermal display.



Image 4.4: Front view of the thermal imager, providing a clear perspective of the screen and its interface.

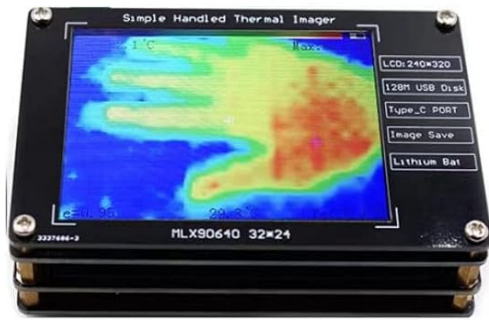


Image 4.5: Top-down view of the thermal imager, showing the full display area and surrounding controls.

4.3 Capturing and Storing Images

The device has a built-in SPI Flash chip that can store up to 100 thermal images. To save an image, refer to the on-screen controls or physical buttons labeled for "Image Save".

4.4 Viewing and Copying Images

To access and transfer stored images:

1. Connect the thermal imager to a computer or mobile phone using the provided USB data cable.
2. The device should appear as a removable storage device (e.g., USB disk).
3. Navigate to the device's storage to view and copy the image files to your computer or phone.

5. MAINTENANCE

Proper maintenance ensures the longevity and optimal performance of your thermal imager.

- **Cleaning:** Use the provided wiping cloth or a soft, dry, lint-free cloth to clean the screen and the device body. Do not use abrasive cleaners or solvents.
- **Storage:** When not in use for extended periods, store the device in a cool, dry place, away from direct sunlight and extreme temperatures.
- **Battery Care:** To maintain battery health, avoid fully discharging the battery frequently. If storing for a long time, charge the battery to about 50% every few months.
- **Physical Protection:** The device's case is made of FR4 sheet for durability. While robust, avoid unnecessary impacts or drops to protect internal components.

6. TROUBLESHOOTING

This section provides solutions to common issues you might encounter with your thermal imager.

Problem	Possible Cause	Solution
Device does not power on.	Battery is depleted.	Connect the device to a USB-C charger and allow it to charge for at least 30 minutes before attempting to power on again.
Screen is blank or frozen.	Software glitch or temporary error.	Perform a hard reset by holding the power button for 10-15 seconds until the device turns off, then power it on again.
Cannot connect to computer.	Faulty USB cable or port; incorrect connection mode.	Ensure the USB cable is securely connected to both the device and the computer. Try a different USB port or cable. Verify the device is in data transfer mode if applicable.
Images are not saving.	Storage is full; incorrect save procedure.	Check if the built-in storage is full (max 100 pictures). Transfer existing images to a computer to free up space. Ensure you are following the correct steps to save an image.

If the issue persists after attempting these solutions, please contact customer support for further assistance.

7. SPECIFICATIONS

Feature	Detail
Infrared Sensor	For MLX90640ESF-BAB
Hardware Resolution	32x24 pixel far infrared array
Screen Resolution	320x240 pixels
Screen Size	2.8 inches
Temperature Measurement Range	-40°C to 300°C
Measurement Accuracy	±2°C
Operating Temperature	0°C to 50°C
Working Humidity	≤70%

Feature	Detail
Refresh Rate	8Hz
Field of View	Horizontal 55° x vertical 35°
Emissivity	0.95
Charging Specifications	USB Type C 5V 1A
Battery Type	Built-in 3.7V 600mAh lithium-ion battery
Working Time	≥4 hours
Internal Storage	SPI Flash chip, stores 100 pictures
Case Material	FR4 sheet
Package Dimensions	4.72 x 3.94 x 1.57 inches
Weight	5.07 ounces
Manufacturer	JUOPZKENN
ASIN	B0CDCMR65V

8. WARRANTY AND SUPPORT

For warranty information or technical support, please contact the manufacturer, JUOPZKENN, directly. Refer to the product packaging or the official brand website for contact details.

Please retain your proof of purchase for any warranty claims.