

## VILTROX DC550 Pro

# VILTROX DC550 Pro 5.5-inch Field Monitor User Manual

Model: DC550 Pro

## 1. INTRODUCTION

This manual provides detailed instructions for the proper use and maintenance of your VILTROX DC550 Pro 5.5-inch Field Monitor. Please read this manual thoroughly before operating the device to ensure optimal performance and longevity. The VILTROX DC550 Pro is a high-brightness, touch-screen director monitor designed for professional camera setups, offering advanced monitoring features and robust connectivity.

## 2. SAFETY INFORMATION

- Do not expose the monitor to rain, moisture, or extreme temperatures.
- Avoid dropping or subjecting the monitor to strong impacts.
- Use only VILTROX-approved power adapters and batteries.
- Do not attempt to disassemble or modify the monitor. Refer all servicing to qualified personnel.
- Clean the screen with a soft, dry cloth. Avoid using harsh chemicals or abrasive materials.

## 3. PACKAGE CONTENTS

Verify that all items listed below are included in your package. If any items are missing or damaged, please contact your retailer.

The 178° ultra-wide-angle design is convenient for creators to enjoy clear picture quality when monitoring from different angles



Image: Overview of the VILTROX DC550 Pro monitor and its included accessories, such as the sunshade, battery, various cables, and storage bag.

- VILTROX DC550 Pro Field Monitor
- Sunshade Hood
- NP-F Series Battery (e.g., F550 Battery)
- Battery Charger (if included)
- Storage Bag
- Type-C Cable
- Micro HDMI Cable
- Mini HDMI Cable
- User Manual (this document)

## 4. PRODUCT OVERVIEW

The VILTROX DC550 Pro is a compact and versatile 5.5-inch field monitor designed to enhance your filmmaking experience. It features a high-brightness 1200nit display, full HD resolution, and a responsive touch screen for intuitive control.



Image: Front view of the VILTROX DC550 Pro monitor, highlighting its 5.5-inch display and main control knob.

### Key Features:

- **5.5-inch Full HD Display:** 1920x1080 resolution with a 1200:1 contrast ratio and 178° ultra-wide viewing angle.
- **1200 Nits High Brightness:** Ensures clear visibility even in bright outdoor conditions.
- **Touch Screen Operation:** Intuitive control for menu navigation and settings adjustment.
- **Professional Monitoring Functions:** Includes 3D LUT, waveform, vectorgraph, brightness histogram, auxiliary focus, audio column, false color, and more.
- **4K HDMI Input/Loop Out:** Supports 4K 30Hz signal transmission for high-definition monitoring.



Image: Visual representation of the monitor's key display specifications: 1200 Nits brightness, Full HD 1920x1080 resolution, 1200:1 contrast ratio, and 178° viewing angle.

## 5. SETUP

---

### 5.1 Powering the Monitor

The DC550 Pro supports multiple power supply options:

- **NP-F Series Lithium Battery:** Insert a compatible NP-F series battery into the battery slot on the back of the monitor.
- **DC IN (12-18V):** Connect an external DC power adapter to the DC IN port.
- **Type-C 5V 3A Power Bank:** Utilize a Type-C power bank for portable power.



Image: Illustrations of the three power supply methods for the VILTROX DC550 Pro: Type-C, NP-F battery, and DC adapter.

### 5.2 Mounting the Monitor

Attach the monitor to your camera rig or stand using the included adapter. Ensure it is securely fastened before use.

### 5.3 Connecting to a Camera

Use the appropriate HDMI cable (Micro HDMI or Mini HDMI, depending on your camera) to connect your camera's HDMI output to the monitor's HDMI input. The monitor also features an HDMI loop-out for connecting to another display.

## 6. OPERATING INSTRUCTIONS

### 6.1 Basic Operation

- **Power On/Off:** Use the power switch located on the side of the monitor.
- **Touch Screen Control:** Tap, swipe, and pinch to navigate menus and adjust settings. Double-finger touch can be used to drag the screen for detail viewing.
- **Menu Navigation:** Access the main menu by tapping the screen or using the physical buttons/dial.

### 6.2 Professional Monitoring Functions

The DC550 Pro offers a suite of professional tools to assist with accurate monitoring:



Image: A visual guide to the professional auxiliary functions available on the VILTROX DC550 Pro, such as 3D LUT, waveform, false color, and focus peaking.

- **3D LUT:** Import custom 3D LUTs via SD card to preview different color grades in real-time. This aids in achieving desired creative effects during post-production.
- **Waveform & Vectorscope:** Analyze video signals for exposure and color accuracy.
- **Brightness Histogram:** Displays the distribution of brightness levels in your image.
- **Auxiliary Focus (Focus Peaking):** Highlights in-focus areas to assist with precise manual focusing.
- **False Color:** Helps evaluate exposure by displaying different exposure levels as distinct colors.
- **Audio Column:** Monitors audio levels.
- **Image Flip:** Flips the image horizontally or vertically.
- **Pixel to Pixel:** Displays the image at its native resolution without scaling.



# Custom 3D LUTS

Import 3D LUT through SD card, which is convenient for customers to use any camera Log mode to shoot and monitor, and it is also convenient to achieve a variety of creative styles in post-production.



Image: A demonstration of the 3D LUT feature, showing an original image compared to one with a 3D LUT applied, illustrating color grading changes.

## 7. MAINTENANCE

---

### 7.1 Cleaning

- **Screen:** Gently wipe the screen with a microfiber cloth. For stubborn smudges, slightly dampen the cloth with water or a screen-specific cleaning solution. Do not spray liquid directly onto the screen.
- **Body:** Use a soft, dry cloth to clean the monitor body. Avoid solvents or abrasive cleaners.

### 7.2 Storage

When not in use, store the monitor in its protective bag in a cool, dry place away from direct sunlight and extreme temperatures. Remove the battery if storing for extended periods.

## 8. TROUBLESHOOTING

---

If you encounter issues with your VILTROX DC550 Pro, refer to the following common problems and solutions:

- **Monitor does not power on:**
  - Ensure the battery is fully charged and correctly inserted, or the power adapter is securely connected.
  - Check the power switch position.
- **No image displayed:**
  - Verify the HDMI cable is securely connected to both the camera and the monitor.
  - Confirm the camera's HDMI output is active and configured correctly.
  - Try a different HDMI cable.

- **Touch screen unresponsive:**

- Restart the monitor.
- Ensure the screen is clean and free of debris.

- **Image quality issues (e.g., flickering, color distortion):**

- Check HDMI cable integrity.
- Ensure camera output resolution and frame rate are compatible with the monitor.
- Reset monitor settings to default.

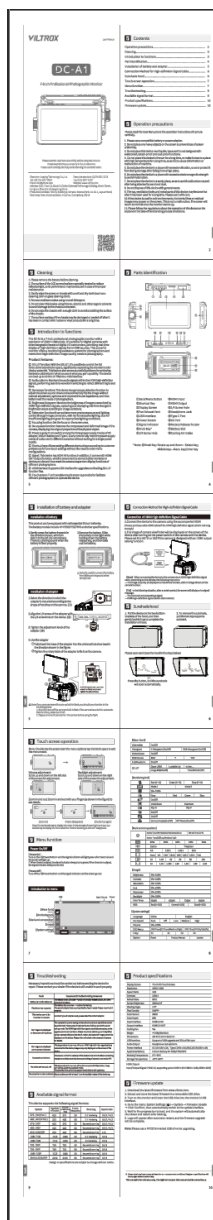
If the problem persists, please contact VILTROX customer support.

## 9. SPECIFICATIONS

| Feature            | Specification                         |
|--------------------|---------------------------------------|
| Screen Size        | 5.5 inches                            |
| Resolution         | 1920 x 1080 (FHD 1080p)               |
| Brightness         | 1200 cd/m <sup>2</sup> (Nits)         |
| Contrast Ratio     | 1200:1                                |
| Viewing Angle      | 178°                                  |
| Input/Output       | 4K HDMI Input/Loop Out                |
| Power Input        | DC 12-18V, Type-C 5V 3A, NP-F Battery |
| Product Dimensions | 6.4 x 1.12 x 3.5 inches               |
| Item Weight        | 1.2 pounds                            |
| Manufacturer       | VILTROX                               |

## 10. WARRANTY AND SUPPORT

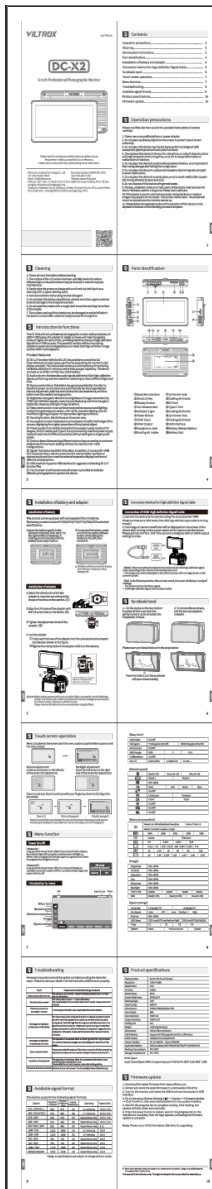
VILTROX products are designed and manufactured to the highest quality standards. This product is covered by a limited warranty against defects in materials and workmanship. For specific warranty terms and conditions, please refer to the warranty card included with your product or visit the official VILTROX website. For technical support, service, or inquiries, please contact VILTROX customer service through their official website or the contact information provided in your product packaging.



## [Viltrox DC-A1 7-Inch Professional Photography Monitor User Manual](#)

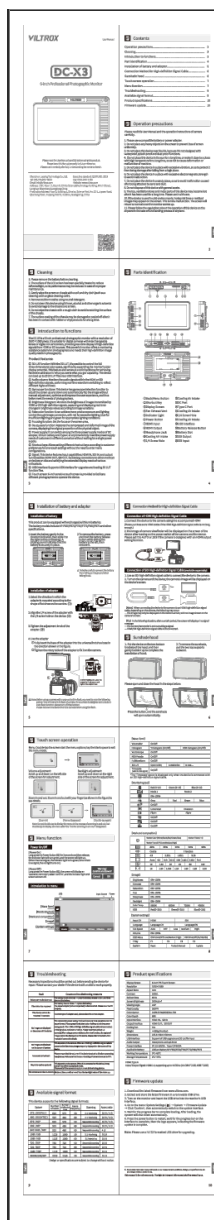
This manual provides detailed instructions for the Viltrox DC-A1, a 7-inch professional photography monitor. It covers setup, features, operation, troubleshooting, and specifications for optimal use in photography and videography.





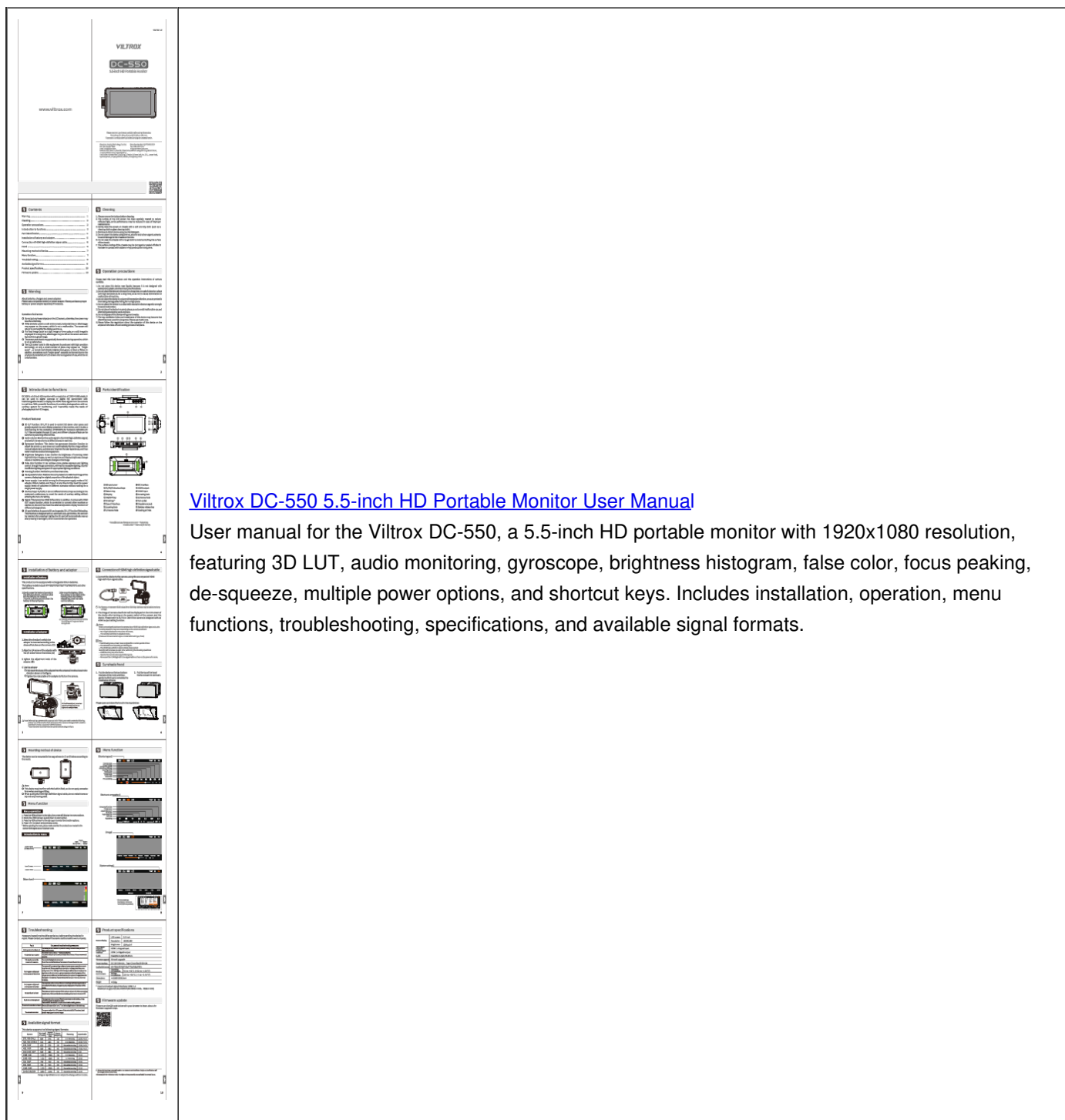
### [Viltrox DC-X2 6-inch Professional Photography Monitor User Manual](#)

This user manual provides detailed instructions for the Viltrox DC-X2, a 6-inch professional photography monitor. It covers features such as 3D LUT, audio columns, gyroscope function, brightness histogram, false color, focus assist, and more. Learn about installation, operation, troubleshooting, and specifications.




### [Viltrox DC-X3 6-Inch Professional Camera Monitor User Manual](#)

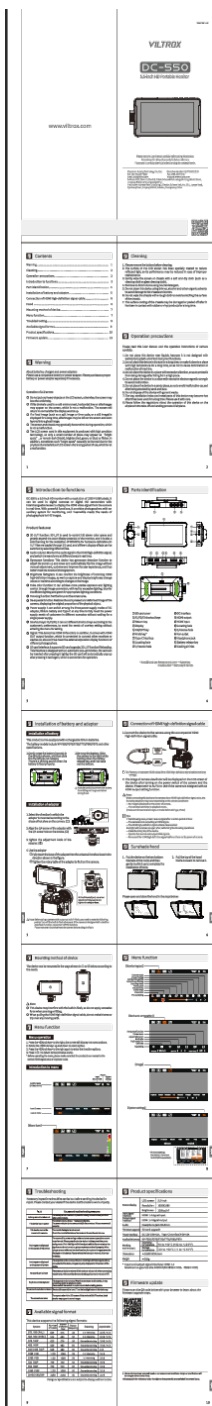
This manual provides comprehensive instructions for the Viltrox DC-X3, a 6-inch professional camera monitor. It covers features like 3D LUT, audio monitoring, gyroscope function, brightness histogram, false color, focus assist, and more. Learn about component identification, battery installation, signal connections, touchscreen operation, menu functions, troubleshooting, available signal formats, product specifications, and firmware updates.



### [Viltrox DC-550 5.5-inch HD Portable Monitor User Manual](#)

User manual for the Viltrox DC-550, a 5.5-inch HD portable monitor with 1920x1080 resolution, featuring 3D LUT, audio monitoring, gyroscope, brightness histogram, false color, focus peaking, de-squeeze, multiple power options, and shortcut keys. Includes installation, operation, menu functions, troubleshooting, specifications, and available signal formats.

|  |  |
|--|--|
| <div data-bbox="116 91 309 1491"> <div>  <p>VILTROX<br/>DC-550 PRO</p> <p>www.viltrox.com</p> </div> <div> <h3>1 Contents</h3> <p>1.1 Introduction</p> <p>1.2 Features</p> <p>1.3 Package Contents</p> <p>1.4 Safety Precautions</p> <p>1.5 Handling</p> <p>1.6 Installation</p> <p>1.7 Troubleshooting</p> <p>1.8 Specifications</p> <p>1.9 Appendix</p> </div> <div> <h3>2 Getting Started</h3> <p>2.1 Unboxing</p> <p>2.2 Initial Setup</p> <p>2.3 Power On/Off</p> <p>2.4 Basic Operation</p> <p>2.5 Touchscreen Function</p> <p>2.6 Menu Navigation</p> <p>2.7 Troubleshooting</p> <p>2.8 Specifications</p> <p>2.9 Appendix</p> </div> <div> <h3>3 Advanced Features</h3> <p>3.1 Multi-Touch Function</p> <p>3.2 External Display Function</p> <p>3.3 External Storage Function</p> <p>3.4 External Power Function</p> <p>3.5 External Audio Function</p> <p>3.6 External Video Function</p> <p>3.7 External Camera Function</p> <p>3.8 External Microphone Function</p> <p>3.9 External Headset Function</p> <p>3.10 External Keyboard Function</p> <p>3.11 External Mouse Function</p> <p>3.12 External Trackball Function</p> <p>3.13 External Joystick Function</p> <p>3.14 External Gamepad Function</p> <p>3.15 External Controller Function</p> <p>3.16 External Sensor Function</p> <p>3.17 External Actuator Function</p> <p>3.18 External Relay Function</p> <p>3.19 External Switch Function</p> <p>3.20 External Button Function</p> <p>3.21 External LED Function</p> <p>3.22 External Fan Function</p> <p>3.23 External Pump Function</p> <p>3.24 External Motor Function</p> <p>3.25 External Solenoid Function</p> <p>3.26 External Valve Function</p> <p>3.27 External Actuator Function</p> <p>3.28 External Relay Function</p> <p>3.29 External Switch Function</p> <p>3.30 External Button Function</p> <p>3.31 External LED Function</p> <p>3.32 External Fan Function</p> <p>3.33 External Pump Function</p> <p>3.34 External Motor Function</p> <p>3.35 External Solenoid Function</p> <p>3.36 External Valve Function</p> </div> </div> | <div data-bbox="339 981 1219 1008"> <a href="#">Viltrox DC-550 PRO 5.5-inch HD Portable Touchscreen Monitor User Manual</a> </div> <div data-bbox="339 1019 1469 1126"> <p>This user manual provides detailed instructions for the Viltrox DC-550 PRO, a 5.5-inch HD portable touchscreen monitor. Learn about its features, setup, operation, menu functions, troubleshooting, and specifications.</p> </div> |
|--|--|



### [Viltrox DC-550 5.5-inch HD Portable Monitor User Manual](#)

User manual for the Viltrox DC-550, a 5.5-inch HD portable monitor. This guide covers installation, operation, menu functions, troubleshooting, and specifications for the monitor, designed for use with digital cameras and camcorders.

|  |  |
|--|--|
|  |  |
|--|--|