



Manuals.plus /

- › Zostuic /
- › Zostuic 4K Digital Camera User Manual

Zostuic DC101-4K-32G SD Card

Zostuic 4K Digital Camera User Manual

Model: DC101-4K-32G SD Card | Brand: Zostuic

1. INTRODUCTION

This manual provides comprehensive instructions for the Zostuic 4K Digital Camera (Model: DC101-4K-32G SD Card). Please read this manual thoroughly before using the camera to ensure proper operation and to maximize its features.

The Zostuic 4K Digital Camera is designed for both photography and video recording, featuring 48MP resolution, 4K video capabilities, autofocus, anti-shake technology, a 3-inch 1800 flip screen, and 16X digital zoom. It is suitable for beginners, adults, teens, and seniors.



Image: Zostuic 4K Digital Camera with included accessories.



Image: Key features of the Zostuic 4K Digital Camera.

Your browser does not support the video tag.

Video: An overview of the Zostuic 4K Digital Camera's capabilities and features.

2. SETUP

2.1. Battery and SD Card Installation

Before first use, ensure the battery is fully charged and the SD card is properly inserted and formatted.

- Insert the provided 32GB SD card into the memory card adapter first, then insert the adapter into the camera's SD card slot. Push it in completely with your fingernail until it clicks.
- Insert the battery into the battery compartment, ensuring the metal contacts align correctly. Close the battery compartment cover securely.

Your browser does not support the video tag.

Video: Instructions on how to correctly insert the SD card and battery into the digital camera.



Image: Detailed diagram of the camera's components and ports.

2.2. Setting Time Stamp and Auto Shutdown

To set the correct date and time, and configure the auto-shutdown feature:

- Press the "mode" button three times to access the setup menu.
- Navigate to the "Set Date" option using the up, down, left, and right buttons.
- Adjust the year, month, day, hour, and minute using the directional buttons. Confirm with the OK button.
- For auto power off, navigate to "Power Save" in the setup menu and select your preferred shutdown time (1, 3, or 5 minutes) to conserve battery life.

Your browser does not support the video tag.

Video: Guide on how to set the camera's timestamp and automatic shutdown feature.

3. OPERATING INSTRUCTIONS

3.1. Taking Photos with Autofocus

The camera features autofocus to help you capture clear images. To take a photo:

- Point the camera at your subject.
- Half-press the shutter button to activate autofocus. A yellow frame will appear on the screen, indicating the camera is focusing.
- Once the focus is locked (the frame turns green), fully press the shutter button to capture the image.

48MP Autofocus Photography Camera

Half-press The Shutter for
More Clearer

16X

16X Zoom



CMOS
True-Color



3 Inch



Image: Demonstrating the camera's 48MP autofocus capability for clearer images.

Your browser does not support the video tag.

Video: Instructions on how to quickly use autofocus to take clear photos.

3.2. Recording Videos

The camera supports 4K video recording with a pause function.

- Switch the camera to video mode.
- Press the record button to start recording.
- Press the record button again to pause the recording. Press it once more to resume.
- Press the stop button to end the recording.

4K Digital Camera For Clearer Video

Start Your Smooth Video Journey

2.7K 4K

▶ → OK
Pause Save Space



Image: The camera's 4K video recording capability with pause function.



Image: Explore various filters and modes for your 4K video recordings.

3.3. Special Features

- **1800 Flip Screen:** The 3-inch screen can be flipped 180 degrees, making it ideal for vlogging and taking selfies.
- **Flash:** Use the built-in flash for improved lighting in low-light conditions.
- **Anti-Shake:** Digital image stabilization helps reduce blur caused by camera movement, especially useful for action shots.
- **Smile & Face Detection:** The camera can detect smiles and faces, assisting in capturing perfect portraits.
- **Time-lapse:** Capture sequences of images over time to create time-lapse videos (2/5/10 second intervals).
- **Continuous Shooting:** Take multiple photos in quick succession (5 fps) for capturing fast-moving subjects.
- **16X Digital Zoom:** Zoom in on distant subjects. Note that digital zoom may affect image quality.
- **Filters:** Apply various filters to your photos and videos to enhance their mood and style.

Advanced Fun UHD Technology



Image: Overview of advanced features including flash, flip screen, anti-shake, and various shooting modes.



Image: Smile and Face Capture feature in use.



Image: Examples of Time Lapse and Continuous Shot modes.

4. CONNECTING TO COMPUTER AND TRANSFERRING FILES

You can easily transfer photos and videos from your camera to a computer using the provided USB cable.

- Connect the camera to your computer using the USB cable.
- Turn on the camera. On the camera screen, select the "MSDC" option (Mass Storage Device Class).
- Your computer should recognize the camera as a removable disk. Open the disk to access your files.
- Locate the "DCIM" folder, which typically contains your photos and videos. You can then copy these files to your computer.

Your browser does not support the video tag.

Video: Steps to upload camera files to a Windows computer.

The camera can also be used for live streaming or as a webcam when connected to a computer.

Vlogging Camera for Video or Webcam

Share Your Wonderful Life

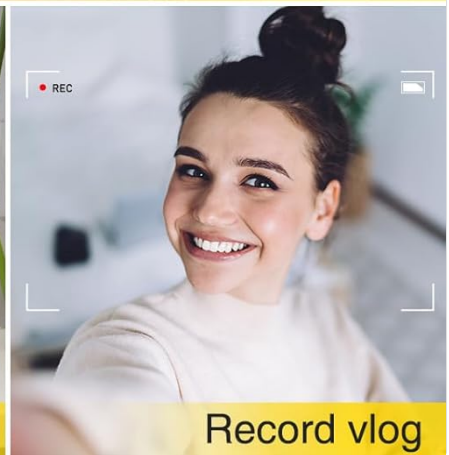
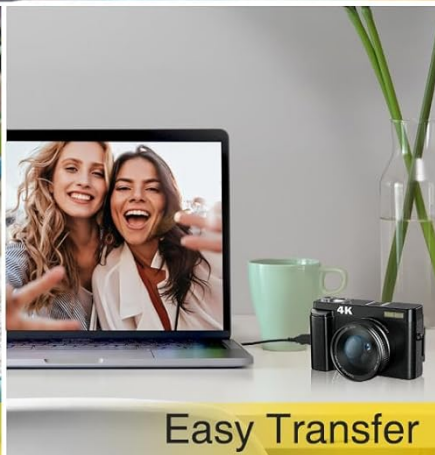


Image: Camera used for live streaming and easy file transfer.

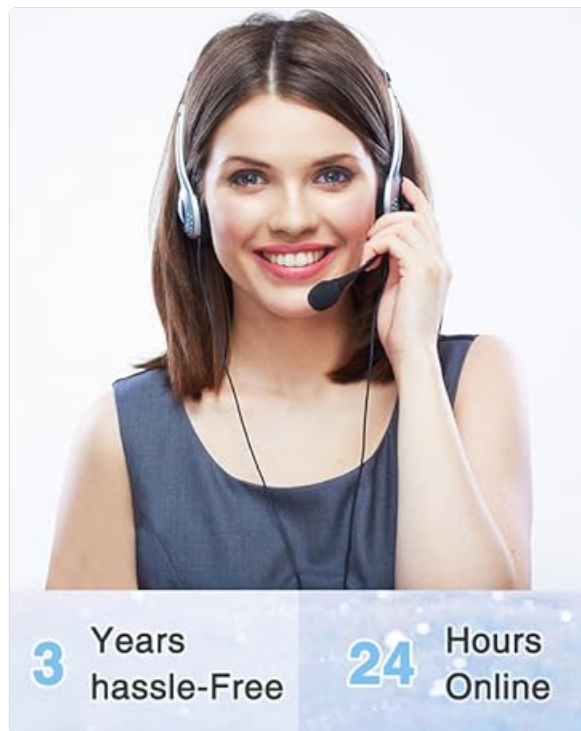


Image: The camera's versatility for vlogging and webcam use.

5. MAINTENANCE

- Keep the camera clean by wiping it with a soft, dry cloth. Avoid using harsh chemicals or abrasive materials.
- Clean the lens gently with a lens cleaning cloth and specialized lens cleaning solution if necessary. Do not touch the lens with your fingers.
- Store the camera in a cool, dry place away from direct sunlight and extreme temperatures.
- When not in use for extended periods, remove the battery to prevent leakage.
- Format the SD card regularly to maintain optimal performance and prevent data corruption.

6. TROUBLESHOOTING

Common Issues and Solutions:

| Problem | Possible Cause | Solution |
|-------------------------------------|---|--|
| Camera does not turn on. | Battery is dead or incorrectly inserted. | Charge the battery fully. Ensure the battery is inserted with correct polarity. |
| Cannot take photos/videos. | SD card is full, locked, or not inserted. | Insert an SD card. Check if the SD card is locked (slide the lock switch). Delete unnecessary files or format the card. |
| Images are blurry. | Improper focus, camera shake, or low light. | Half-press the shutter to autofocus. Use anti-shake feature. Use flash in dark environments. Ensure sufficient lighting. |
| Computer does not recognize camera. | Incorrect USB mode selected or cable issue. | Ensure "MSDC" mode is selected on the camera. Try a different USB port or cable. Restart both camera and computer. |

If you encounter issues not listed here, please refer to the contact information in the Warranty and Support section.

7. SPECIFICATIONS

| Feature | Detail |
|-------------------------|---|
| Brand | Zostuic |
| Model Name | DC101 |
| Model Number | DC101-4K-32G SD Card |
| Photo Sensor Resolution | 48 MP |
| Video Resolution | 4K (3840 x 2160 pixels) |
| Optical Zoom | 16 x |
| Screen Size | 3 Inches (1800 Flip Screen) |
| Image Stabilization | Digital |
| Autofocus | Yes (Contrast Detection) |
| Supported File Format | JPEG (Images), 4K (Video) |
| Memory Storage Capacity | 32 GB (SD Card included) |
| Battery Type | Lithium Ion (2 AAA batteries included) |
| Connectivity | USB Type-C, HDMI, Wi-Fi |
| Special Features | Time-lapse, Continuous Shooting, Smile & Face Detection, Built-In Flash |
| Dimensions (approx.) | 4.53" x 2.75" x 1.57" |
| Weight (approx.) | 0.59 lbs |

8. WARRANTY AND SUPPORT

Zostuic offers 12 months of hassle-free support for your product experience. If you have any questions or require assistance, please feel free to contact us via Amazon message.

What's in the Box:

- Digital Camera x1
- Battery x2
- Charger Head x1
- Charge Cable x1
- HDMI Cable x1
- Lens Film x1
- Lens Cap x1
- User Manual x1
- 32G Micro SD Card x1
- Camera Bag x1
- Cleaning Cloth x1
- Long Strap x1



Ideal Gift for Teens, Adults, Beginners, and Seniors

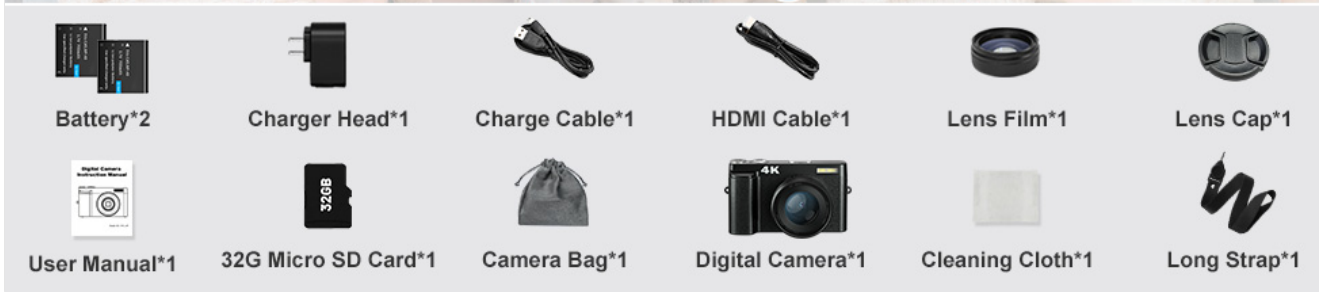


Image: All items included in the camera kit.