

## JORINDO JD-03

# JORINDO IEC320 C13 to C15 AC Power Converter User Manual (Model JD-03)

Model: JD-03

## 1. INTRODUCTION

---

This manual provides instructions for the safe and effective use of the JORINDO IEC320 C13 to C15 AC Power Converter. This adapter is designed to facilitate the connection of devices with a C13 plug to power outlets configured with a C15 socket, enhancing compatibility and flexibility in various power distribution unit (PDU) and uninterruptible power supply (UPS) server environments.



Image 1.1: JORINDO IEC320 C13 to C15 AC Power Converter. This image shows two black power converters, each with a C13 female end and a C15 female end, designed for adapting power connections.

## 2. SAFETY INFORMATION

**IMPORTANT: This power converter DOES NOT CONVERT VOLTAGE. It is designed only to adapt the physical connection type between C13 and C15 sockets. Ensure that the voltage requirements of your device match the voltage supplied by the power source.**

- Do not exceed the rated power of 10A/250V.
- Ensure all connections are secure before applying power.
- Do not use in wet or damp conditions.
- Keep out of reach of children.
- Disconnect power before making or breaking connections.

## 3. PRODUCT FEATURES

- **Product Name:** IEC320 C13 TO C15 AC power converter
- **Material:** High quality PVC plastic, pure copper conductor

- **Rated Power:** 10A/250V
- **Function:** Converts a C13 female socket to a C15 female socket.
- **Application:** Suitable for computers, monitors, printers, projectors, PDU/UPS servers, and other equipment requiring C13 to C15 power interface conversion.

## 4. PACKAGE CONTENTS

---

- 1 x JORINDO IEC320 C13 TO C15 AC Power Converter

## 5. SETUP INSTRUCTIONS

---

The JORINDO IEC320 C13 to C15 AC Power Converter is designed for straightforward use. Follow these steps to connect your devices:

1. **Identify Connections:** Locate the C13 plug on your device's power cable and the C15 socket on your power source (e.g., PDU, UPS, server).
2. **Connect C13 Plug to Converter:** Insert the C13 plug from your device's power cable into the C13 female end of the JORINDO converter. Ensure a firm connection.
3. **Connect Converter to C15 Socket:** Insert the C15 female end of the JORINDO converter into the C15 socket of your power source. Ensure a firm connection.
4. **Verify Power:** Once both connections are secure, you may power on your device.

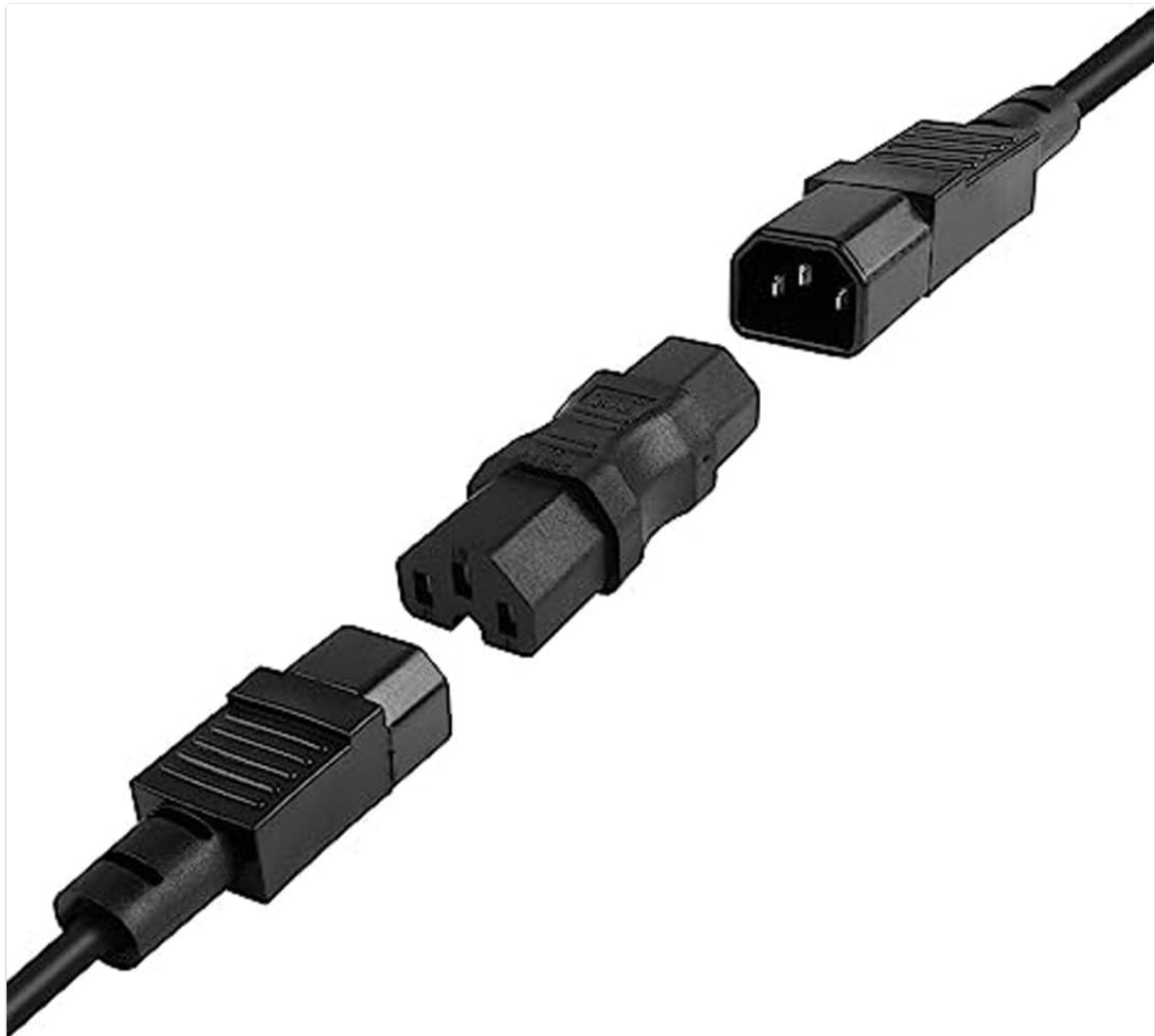


Image 5.1: Connection example. This image illustrates how the C13 to C15 converter connects between a C13 male plug and a C15 female socket, showing the adapter facilitating the connection of two power cables.

## 6. OPERATING INSTRUCTIONS

---

The JORINDO IEC320 C13 to C15 AC Power Converter operates passively as a physical adapter. No specific operational steps are required beyond proper connection. Ensure that the power source and the connected device are compatible in terms of voltage and current ratings.

## 7. MAINTENANCE

---

The converter requires minimal maintenance. To ensure longevity and safe operation:

- Keep the converter clean and free from dust and debris.
- Store in a dry environment when not in use.
- Inspect the converter periodically for any signs of damage, such as cracks in the plastic housing or bent pins. Discontinue use if damage is observed.
- Do not attempt to disassemble or modify the converter.

## 8. TROUBLESHOOTING

---

If you encounter issues while using the JORINDO IEC320 C13 to C15 AC Power Converter, consider the following:

- **No Power to Device:**
  - Ensure all connections (device to converter, converter to power source) are fully seated and secure.
  - Verify that the power source is active and supplying power.
  - Check if the device's power cable is functional by testing it directly if possible.
  - Confirm that the device's voltage requirements match the power source's output. *Remember, this converter does not change voltage.*
- **Loose Connection:**
  - Ensure the converter is fully inserted into both the C13 plug and the C15 socket.
  - Avoid placing strain on the connections.

If problems persist, contact customer support.

## 9. SPECIFICATIONS

---



Image 9.1: Product dimensions. This image displays the dimensions of the C13 to C15 converter, indicating a length of 68mm, a width of 26mm, and a height of 19mm.

Feature	Detail
<b>Product Name</b>	IEC320 C13 TO C15 AC Power Converter
<b>Model Number</b>	JD-03
<b>Brand</b>	JORINDO
<b>Material</b>	High quality PVC plastic, pure copper conductor
<b>Rated Power</b>	10A/250V
<b>Product Dimensions (L x W x H)</b>	1.2 x 0.75 x 2.7 inches (approximately 68mm x 19mm x 26mm)
<b>Item Weight</b>	1.44 ounces
<b>Color</b>	Black
<b>Number of Ports</b>	1 (C13 female to C15 female)
<b>Voltage Conversion</b>	None (Pass-through adapter)

## 10. WARRANTY AND SUPPORT

For warranty information or technical support regarding your JORINDO IEC320 C13 to C15 AC Power

Converter, please refer to the retailer's return policy or contact the seller directly through the platform where the purchase was made. Keep your purchase receipt for any warranty claims.