

podofo A3194UPA4

Podofa A3194UPA4 2 Din Car Radio User Manual

Model: A3194UPA4

1. INTRODUCTION

Thank you for choosing the Podofa A3194UPA4 2 Din Car Radio. This manual provides detailed instructions for the installation, operation, and maintenance of your new car multimedia system. Please read this manual thoroughly before using the product to ensure proper functionality and safety. Keep this manual for future reference.

2. PRODUCT OVERVIEW

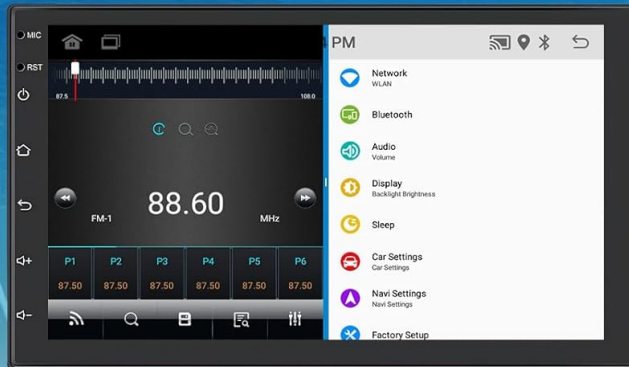
2.1 Key Features

- 7-inch Capacitive Touchscreen Display (1024 x 600 resolution)
- Android 13 Operating System
- Apple CarPlay & Android Auto Support
- Bluetooth for Hands-free Calling and Audio Streaming
- Built-in GPS Navigation with Offline Map Support
- Wi-Fi Connectivity for Online Maps and App Downloads
- FM/RDS Radio with 18 Preset Stations
- Support for AHD Backup Camera Input
- Steering Wheel Control (SWC) Compatibility
- Split Screen Functionality
- Multiple Desktop Themes
- 64 GB Internal Storage

2.2 Product Dimensions

Split Screen

With split screen function, one page can display multiple application pages at the same time, enjoy convenient multi-function collaboration such as navigation, music playback, address book.



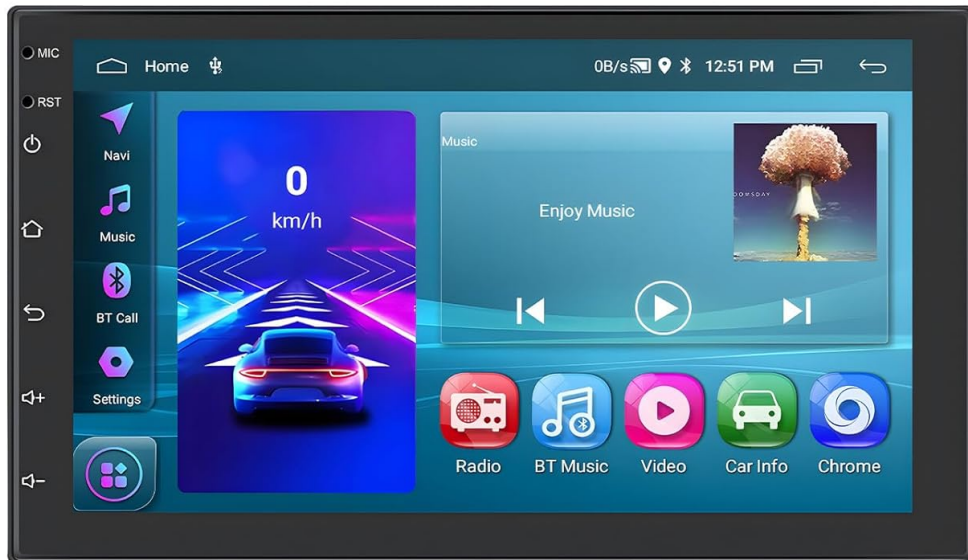
28 Desktop Themes

You can also change the colors of various UI theme desktops, there is always one you will like.

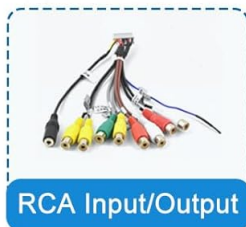


Image: Front and side view of the car radio with dimensions. The unit measures approximately 178mm (7.0 inches) in width, 102mm (4.0 inches) in height, and 70mm (2.75 inches) in depth.

2.3 Package Contents



Power Cord



RCA Input/Output



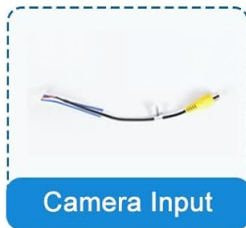
USB Cable



Iron pieces



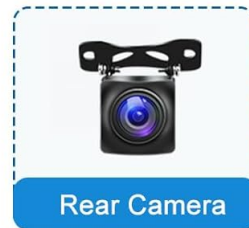
GPS Antenna



Camera Input



User Manual



Rear Camera

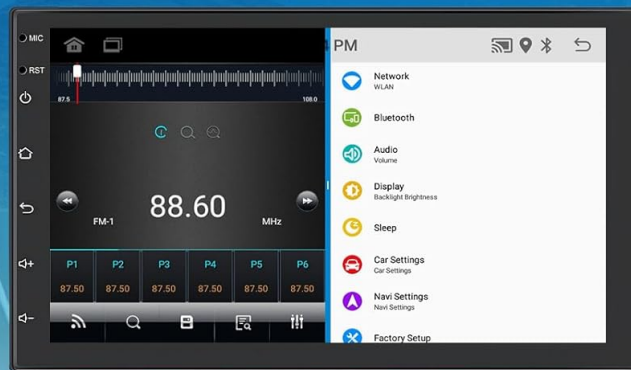
Image: All components included in the Podofu A3194UPA4 package. This includes the main unit, power cord, RCA input/output cables, USB cable, iron pieces for mounting, GPS antenna, camera input cable, user manual, and a rear camera.

3. SETUP AND INSTALLATION

3.1 Wiring Diagram

Split Screen

With split screen function, one page can display multiple application pages at the same time, enjoy convenient multi-function collaboration such as navigation, music playback, address book.



28 Desktop Themes

You can also change the colors of various UI theme desktops, there is always one you will like.



Image: Detailed wiring diagram for the Podofu A3194UPA4 car radio. It shows connections for power, RCA input/output, USB, camera input, GPS antenna, radio antenna, and various speaker and control wires.

Carefully connect the wires according to the diagram. Ensure all connections are secure to prevent malfunctions. Professional installation is recommended.

- **Power Cord:** Connect to the vehicle's power supply (ACC, B+, GND).
- **RCA Input/Output:** For external audio/video devices, subwoofer, and amplifier connections.
- **USB Cable:** For data transfer, charging, and connecting USB devices.
- **Camera Input:** Connects to the AHD backup camera.
- **GPS Antenna:** Mount in a location with a clear view of the sky for optimal signal reception.
- **Radio Antenna:** Connect to the vehicle's FM/AM antenna.
- **Steering Wheel Control (SWC) Wires (KEY1, KEY2):** Connect to your vehicle's steering wheel control wires.
- **Reverse Input (REVERSING):** Connect to the vehicle's reverse light signal for automatic camera display.

3.2 General Installation

After wiring, carefully slide the unit into the double DIN slot of your vehicle's dashboard. Secure it using the provided mounting brackets and screws. Ensure the unit is firmly in place and does not obstruct any vehicle controls or airbags.

4. OPERATING INSTRUCTIONS

4.1 GPS Navigation & Wi-Fi Connection



Image: The car radio display showing GPS navigation on the left and a video streaming application on the right, demonstrating Wi-Fi connectivity. Various app icons are visible around the main unit.

The unit comes with pre-installed offline map applications. For online navigation and real-time traffic updates, connect the unit to a Wi-Fi network (e.g., your phone's hotspot). Once connected, you can download additional apps from the play store, such as YouTube, TikTok, and Spotify, to enhance your in-car experience.

4.2 Bluetooth Handsfree

AHD Backup Camera

AHD high-definition camera, whether it is day or night, or rain or fog, you can clearly observe the road conditions.



Steering Wheel Control

Support steering wheel learning, which allows you to easily make hands-free calls, switch music, etc. Let you enjoy the road without being distracted by trivial matters.



Image: The car radio display showing the Bluetooth handsfree interface with a dial pad and contacts. A Bluetooth logo is prominently displayed, and a music player interface is shown in the background.

Pair your smartphone with the car radio via Bluetooth for hands-free calling and wireless music playback. Access your phonebook directly from the unit's interface. To pair, go to the Bluetooth settings on the car radio and search for available devices on your phone.

4.3 FM/RDS Radio



Image: The car radio display showing the FM/RDS radio interface with frequency display (87.50 MHz) and preset buttons. An equalizer graphic is visible at the bottom.

Tune into your favorite FM radio stations. The RDS (Radio Data System) function displays station information, such as song titles or program names, where available. You can save up to 18 preset stations for quick access.

4.4 AHD Backup Camera



Image: The car radio display showing the view from an AHD backup camera, with parking guidelines overlaid. The camera itself is shown mounted on the rear of a vehicle.

When the vehicle is shifted into reverse, the display automatically switches to the AHD backup camera view, providing a clear image of the area behind your car. This feature enhances safety during parking and reversing maneuvers.

4.5 Steering Wheel Control (SWC)



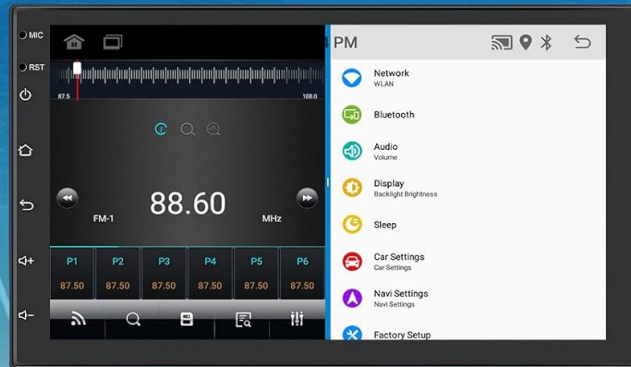
Image: The car radio display showing the Steering Wheel Control learning interface, with options to assign functions like volume, mode, and navigation to physical buttons on the steering wheel.

The unit supports steering wheel control learning. This allows you to map functions such as volume adjustment, track skipping, and mode switching to your vehicle's existing steering wheel buttons, enabling safer operation while driving.

4.6 Split Screen Function

Split Screen

With split screen function, one page can display multiple application pages at the same time, enjoy convenient multi-function collaboration such as navigation, music playback, address book.



28 Desktop Themes

You can also change the colors of various UI theme desktops, there is always one you will like.



Image: The car radio display showing a split-screen view, with a radio interface on the left and a settings menu on the right, demonstrating the ability to run two applications simultaneously.

Utilize the split-screen function to display two applications simultaneously. For example, you can have navigation running on one side while controlling music playback or viewing another app on the other side.

4.7 Desktop Themes



Image: A grid of various desktop themes available for the car radio, showcasing different color schemes and icon layouts. Personalize your car radio's interface by choosing from 28 different desktop themes. Navigate to the theme settings to browse and apply your preferred visual style.

4.8 Apple CarPlay & Android Auto

Connect your compatible iPhone or Android smartphone via USB to access Apple CarPlay or Android Auto. This allows you to use your phone's navigation, music, messaging, and other supported apps directly on the car radio's display, optimized for in-car use.

5. MAINTENANCE

- **Cleaning:** Use a soft, dry cloth to clean the screen and unit. Avoid abrasive cleaners or solvents.
- **Software Updates:** Periodically check for software updates through the system settings or the manufacturer's website to ensure optimal performance and access to new features.
- **Temperature:** Avoid exposing the unit to extreme temperatures, which can affect its performance and lifespan.

6. TROUBLESHOOTING

6.1 Common Issues and Solutions

Problem	Possible Cause	Solution
Unit does not power on.	Incorrect wiring, blown fuse.	Check power connections (ACC, B+, GND). Inspect vehicle's fuse box.
No sound.	Volume too low, speaker wires disconnected, incorrect audio settings.	Increase volume. Check speaker wiring. Verify audio output settings.
GPS signal weak or lost.	GPS antenna obstructed or improperly installed.	Ensure GPS antenna has a clear view of the sky. Check antenna connection.
Bluetooth connection issues.	Device not in pairing mode, interference.	Ensure both devices are in pairing mode. Delete previous pairings and try again.
Backup camera not displaying.	Camera not connected, reverse trigger wire not connected.	Check camera input cable. Ensure the REVERSING wire is connected to the reverse light signal.

If you encounter issues not listed here, or if the suggested solutions do not resolve the problem, please contact customer support.

7. SPECIFICATIONS

Feature	Specification
Brand	podofu
Model Number	A3194UPA4
Screen Size	7 Inch
Resolution	1024 x 600
Operating System	Android, iOS (for CarPlay/Android Auto)
Memory Storage Capacity	64 GB
Touchscreen Type	Capacitive
Display Type	LCD
Connectivity Technology	Bluetooth, Wi-Fi
Mounting Type	Panel Mount
Audio Output Mode	Stereo
Control Method	Touch
Compatible Devices	Smartphone
Vehicle Service Type	Car

8. WARRANTY AND SUPPORT

8.1 Warranty Information

This product comes with a **2-year warranty** from the date of purchase. The warranty covers manufacturing defects and malfunctions under normal use. It does not cover damage caused by improper installation, misuse, accidents, or unauthorized modifications.

8.2 Customer Support

For technical assistance, troubleshooting, or warranty claims, please contact Podofo customer support through the retailer where you purchased the product or visit the official Podofo website for contact information.