

## Lanlily 1756-L75

# Lanlily 1756-L75 Processor Controller Module Instruction Manual

Model: 1756-L75 LOGIX 32MB

## 1. INTRODUCTION

This manual provides essential information for the safe and efficient installation, operation, and maintenance of the Lanlily 1756-L75 Processor Controller Module. Please read this manual thoroughly before using the product and retain it for future reference. This module is designed for industrial automation applications, specifically as a Programmable Logic Controller (PLC) component.

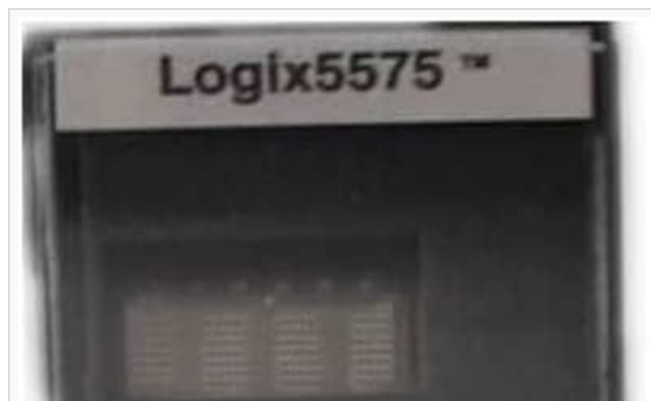
## 2. SAFETY INFORMATION

Always observe standard industrial safety practices when working with electrical equipment. Failure to follow these instructions may result in personal injury or equipment damage.

- Ensure power is disconnected before installing or removing the module.
- Only qualified personnel should perform installation, wiring, and maintenance.
- Protect the module from moisture, dust, and extreme temperatures.
- Use appropriate electrostatic discharge (ESD) precautions when handling the module.

## 3. PRODUCT OVERVIEW

The Lanlily 1756-L75 is a high-performance Processor Controller Module with 32MB of memory, designed for ControlLogix systems. It serves as the central processing unit for industrial automation applications, executing user programs and managing I/O operations.





**Figure 3.1: Front View of 1756-L75 Module.** This image displays the front panel of the Lanlily 1756-L75 Processor Controller Module. Visible features include the 'Logix5575' branding, status indicators (RUN, FORCE, SD, OK) for operational status, a key switch with positions for RUN, REM (Remote), and PROG (Program) modes, an SD card slot for memory expansion or program storage, and a USB port for local connection and programming.



**Figure 3.2: Rear View and Product Label.** This image shows the rear of the Lanlily 1756-L75 Processor Controller Module, highlighting its product label. The label includes critical information such as 'Rockwell Automation' and 'ControlLogix 32 MB Controller', the model number 'CAT 1756-L75', serial number, firmware version (FW 1.010), power specifications (800mA @ 5.1VDC, 5mA @ 1.2VDC), and various regulatory certifications (UL, CE, Ex).

## 4. SETUP

Follow these general steps for installing the 1756-L75 Processor Controller Module into a ControlLogix chassis.

1. **Chassis Preparation:** Ensure the ControlLogix chassis is powered off and properly grounded. Select an available slot for the module.
2. **Module Installation:** Align the module with the guides in the chassis slot. Gently push the module until it seats firmly in the backplane connector. Secure the module using the locking mechanism or screws if applicable.
3. **Power Connection:** Verify that the chassis power supply is correctly installed and connected.
4. **Initial Power-Up:** Apply power to the chassis. Observe the status indicators on the front of the module (RUN, OK) to confirm proper initialization.
5. **Software Connection:** Connect a programming device (e.g., PC) to the module via the USB port or network connection (if an Ethernet module is present in the chassis) to establish communication using Rockwell Automation's programming software.

## 5. OPERATING INSTRUCTIONS

The 1756-L75 module operates under the control of a user-defined program. Key operational aspects include:

- **Key Switch Positions:**
  - **RUN:** The module executes the loaded program. I/O operations are active.
  - **REM (Remote):** The module can be switched between RUN, PROGRAM, and TEST modes via programming software.
  - **PROG (Program):** The module stops program execution, allowing for program download, upload, and editing. I/O operations are typically inactive.
- **Status Indicators:** Monitor the RUN, FORCE, SD, and OK LEDs on the front panel for module status. A solid green 'OK' indicator typically signifies normal operation.
- **Programming:** Use compatible software (e.g., Studio 5000 Logix Designer) to create, download, and monitor PLC programs.

## 6. MAINTENANCE

Regular maintenance helps ensure the longevity and reliable operation of the 1756-L75 module.

- **Cleaning:** Keep the module and chassis free from dust and debris. Use a soft, dry cloth for cleaning. Do not use solvents or abrasive cleaners.
- **Environmental Control:** Ensure the operating environment meets the specified temperature and humidity ranges to prevent component degradation.
- **Firmware Updates:** Periodically check for and apply firmware updates from the manufacturer to ensure optimal performance and security.
- **Connection Integrity:** Periodically inspect all connections for tightness and corrosion.

## 7. TROUBLESHOOTING

This section outlines common issues and basic troubleshooting steps.

| Problem                           | Possible Cause   | Solution   |
|-----------------------------------|--|--|
| Module not powering on            | No power to chassis, module not seated correctly       | Check chassis power supply; re-seat module firmly.   |
| 'OK' indicator is not solid green | Configuration error, hardware fault, no program loaded | Check programming software for error codes; verify module configuration; download a valid program. |
| Cannot connect via USB            | Incorrect driver, faulty cable, software issue         | Install correct USB drivers; try a different USB cable; restart programming software.              |

For complex issues, consult the detailed documentation provided by Rockwell Automation or contact technical support.

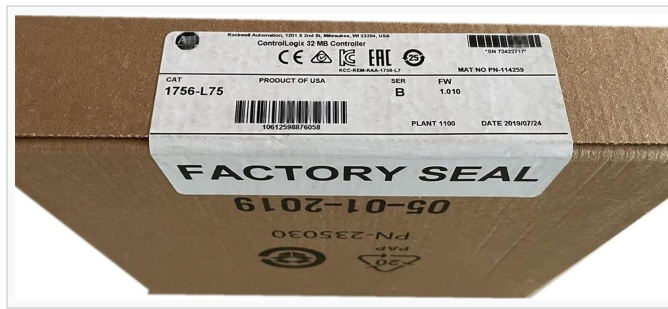
## 8. SPECIFICATIONS

| Attribute           | Value                             |
|---------------------|-----------------------------------|
| Model               | 1756-L75                          |
| Type                | Processor Controller Module LOGIX |
| Memory              | 32MB                              |
| Brand               | Lanlily                           |
| Material            | Copper                            |
| Display Type        | LCD or LED                        |
| UPC                 | 705598069414                      |
| Included Components | 1756-L75 1PCS                     |

## 9. WARRANTY AND SUPPORT

The Lanlily 1756-L75 Processor Controller Module comes with a **One Year Warranty** from the date of purchase. This warranty covers defects in materials and workmanship under normal use.

For technical support, warranty claims, or further inquiries, please contact your vendor or the manufacturer, Lanlily. Ensure you have your product model number (1756-L75) and purchase details available when seeking support.



**Figure 9.1: Factory Sealed Product Box.** This image shows the top of the factory-sealed packaging for the Lanlily 1756-L75 module. The 'FACTORY SEAL' tape is clearly visible, indicating the product is new and unopened. The product label displays 'Rockwell Automation', 'ControlLogix 32 MB Controller', 'CAT 1756-L75', and a barcode with the identifier [10612598876058](#), which can be used for product tracking or verification.



**Figure 9.2: Box Packaging Details.** This image presents the bottom view of the factory-sealed box for the Lanlily 1756-L75 module. It includes details about the conductive container, box certificate specifications, and part numbers such as P/N 95624728 and Assembly # 96882550, along with dimensions.